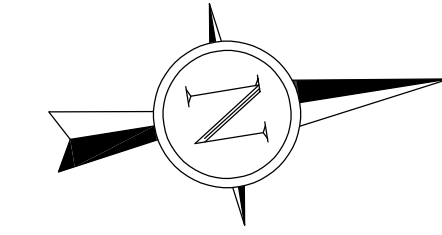


NO SLOPES TO EXCEED 3:1 MAX

NOTE: CONTRACTOR TO PROVIDE FINAL WALL
SEALED SHOP DRAWINGS, DETAILS, AND
CALCULATION FOR APPROVAL

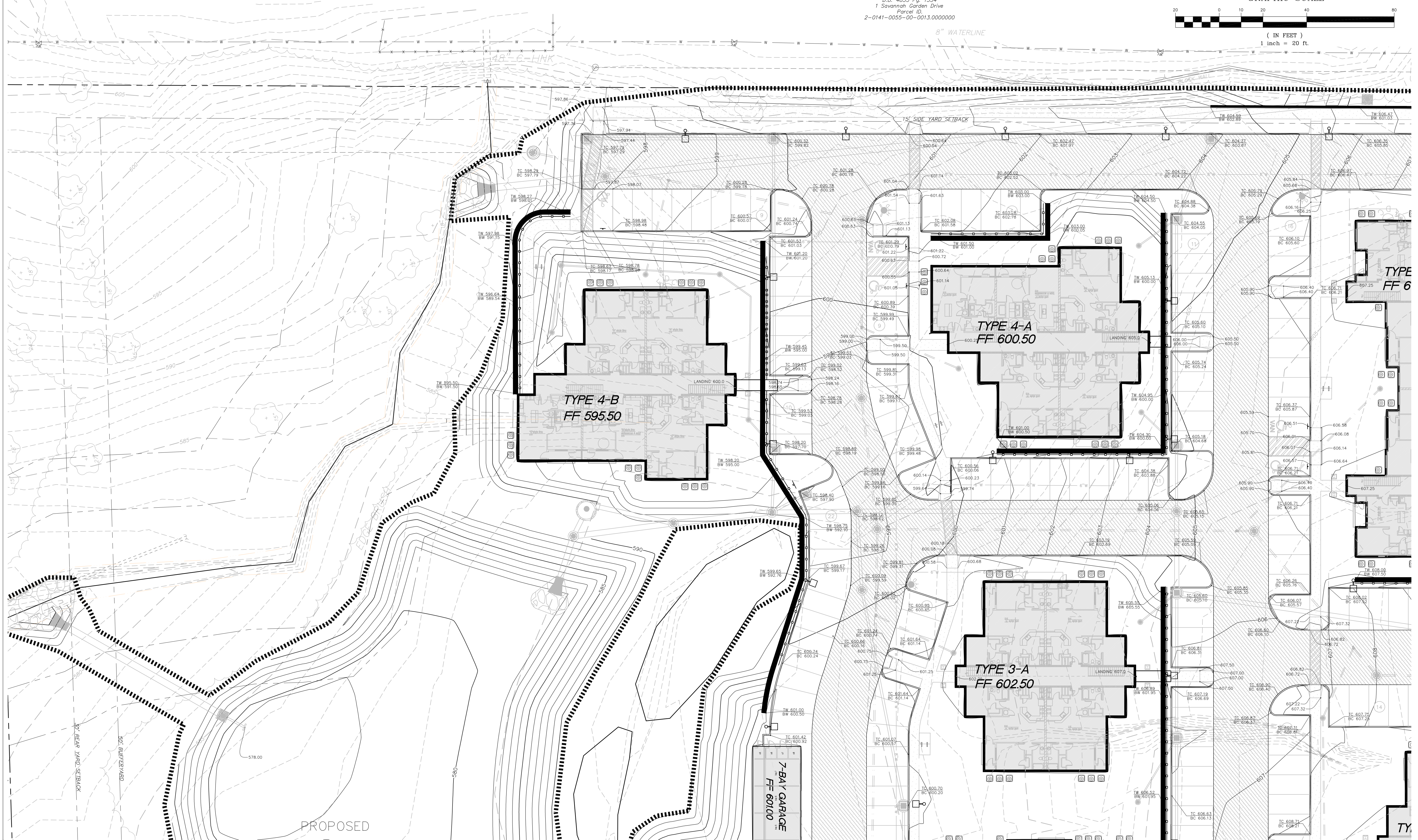
N/F
Savannah Ridge Apartment Homes, Inc.
D.B. 4833 Pg. 1354
1 Savannah Garden Drive
Parcel ID
2-0141-0055-00-0013.0000000



GRAPHIC SCALE



(IN FEET)
1 inch = 20 ft.



NO.	DESCRIPTION	DATE
1	REV 1	7-24-2019
2	REV 2	8-23-2019
3	REV 4	10-25-2019
4	REV 5	11-26-2019

PROJECT TITLE
THE JEWEL
15 CASTLE LANE
OFALLON, MO 63366

GRIMES CONSULTING, INC.
Civil Engineering & Surveying Services
13300 OLD TESSON ROAD
ST. LOUIS, MO 63128
PH. (314) 849-6100
FAX (314) 849-6010
www.grimesconsulting.com



LEONARD J. MEERS
PROFESSIONAL ENGINEER
E-28288

Developer / Owner Information
VITA Residential
CONTACT: Steve Sisson
3333 Aspen Grove Dr
Franklin, TN 37067
Email: steve@vitapmg.com

P+Z No. 19-001400
Approval Date: 6/6/2019

City No.

Page No.
C5.1

GRADING PLAN