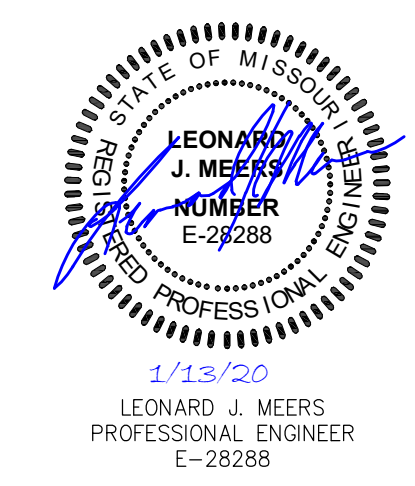


NO.	DESCRIPTION	DATE
1	REV 1	7-24-2019
2	REV 2	8-23-2019
3	REV 4	10-25-2019
4	REV 5	11-26-2019

PROJECT TITLE
THE JEWEL
 15 CASTLE LANE
 O'FALLON, MO 63366

GRIMES CONSULTING, INC.
Civil Engineering & Surveying Services
 13300 OLD TESSON ROAD
 ST. LOUIS, MO 63128
 PH. (314) 849-6100
 FAX (314) 849-6010
 www.grimesconsulting.com

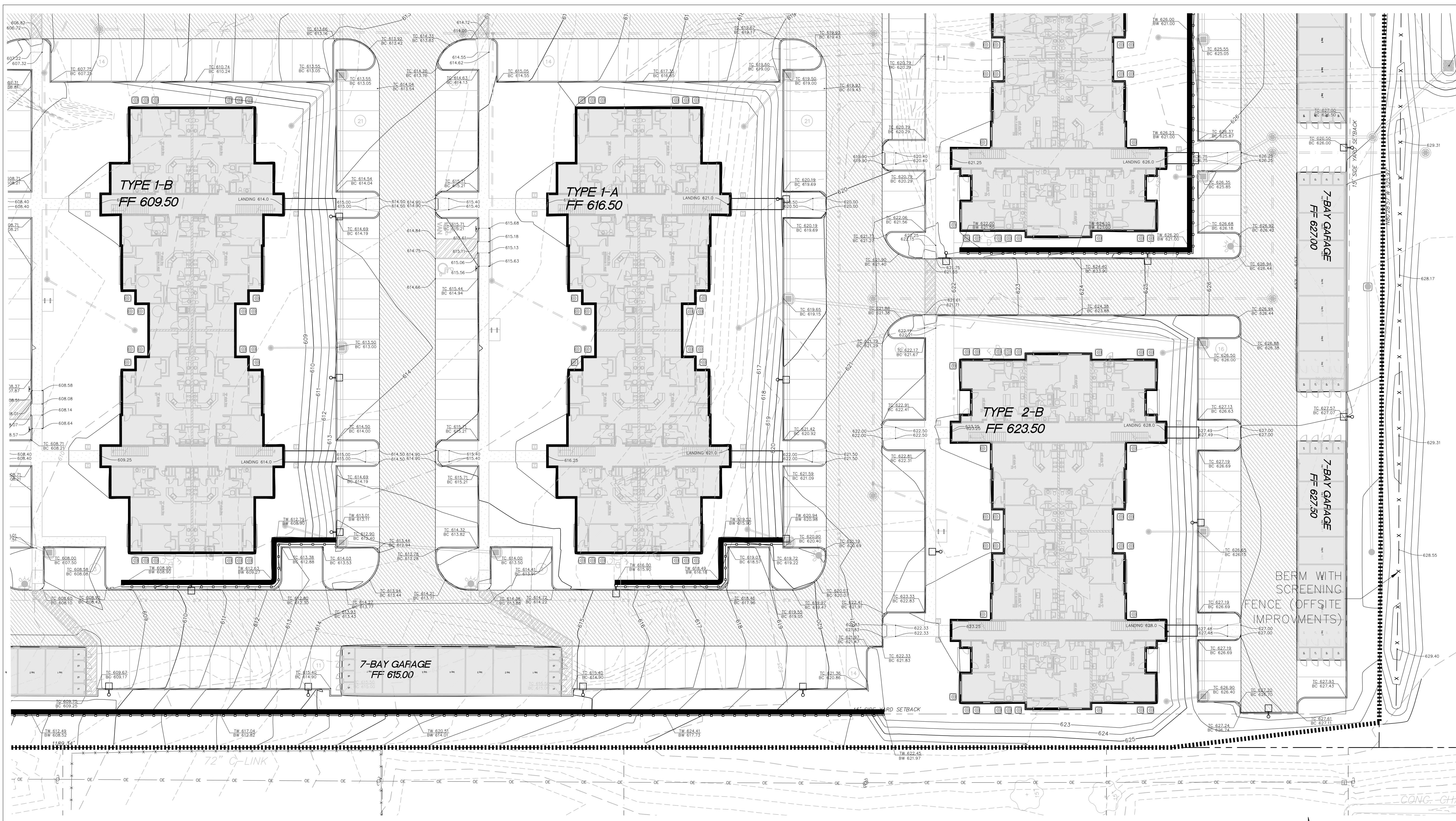


Developer / Owner Information
 VITA Residential
 CONTACT: Steve Sisson
 3333 Aspen Grove Dr
 Franklin, TN 37067
 Email: steve@vitapmg.com

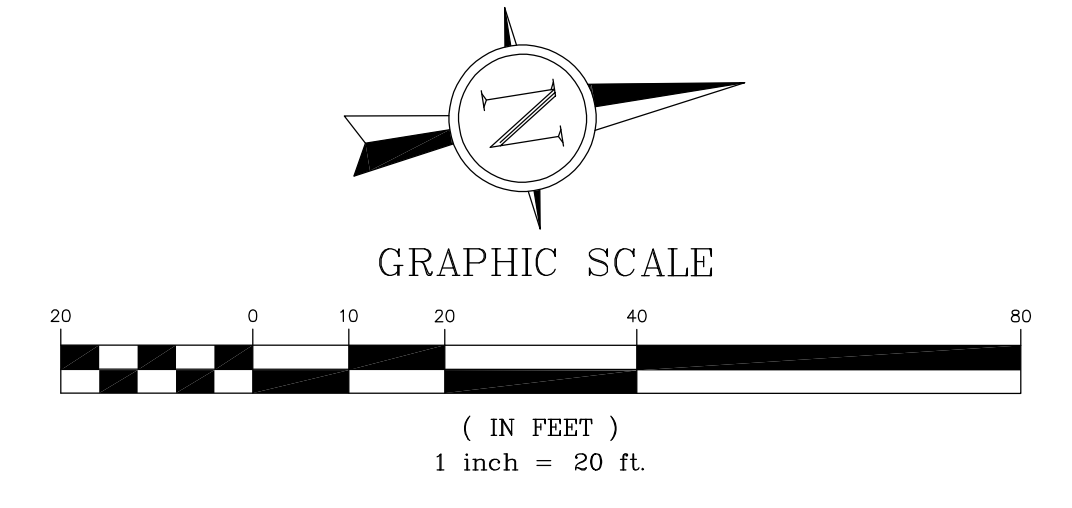
P+Z No. 19-001400
 Approval Date: 6/6/2019

City No.
 Page No.
C5.4

GRADING PLAN



NOTE: CONTRACTOR TO PROVIDE FINAL WALL SEALED SHOP DRAWINGS, DETAILS, AND CALCULATION FOR APPROVAL



NO SLOPES TO EXCEED 3:1 MAX
 City of O'Fallon Standard Notes and Details - Nov. 2017