

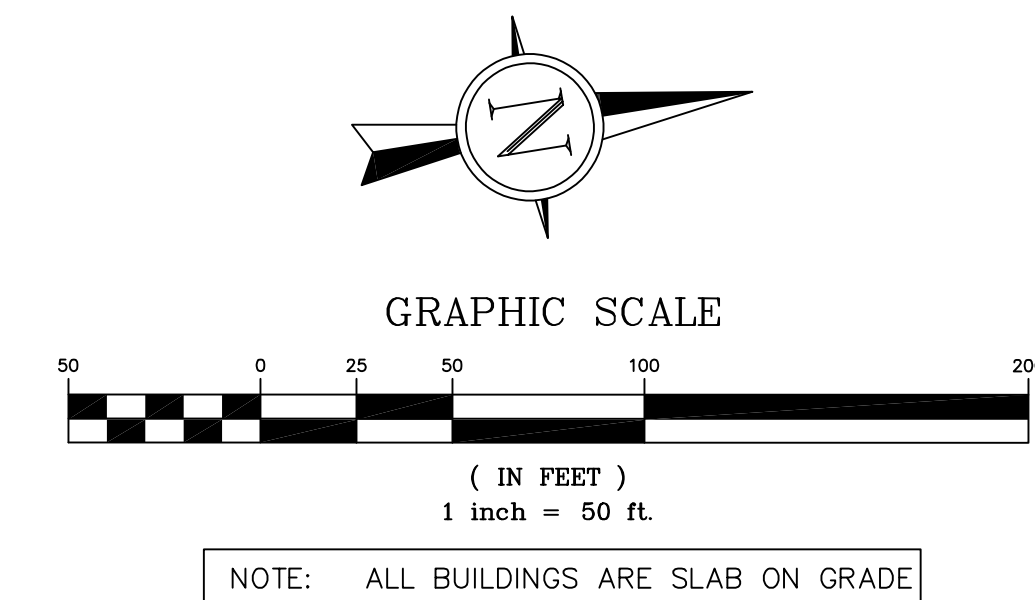
SEE SHEETS C6.1-6.4 FOR MORE DETAIL

NOTE: ALL PROPOSED UTILITIES AND/OR UTILITY RELOCATIONS SHALL BE RELOCATED UNDERGROUND

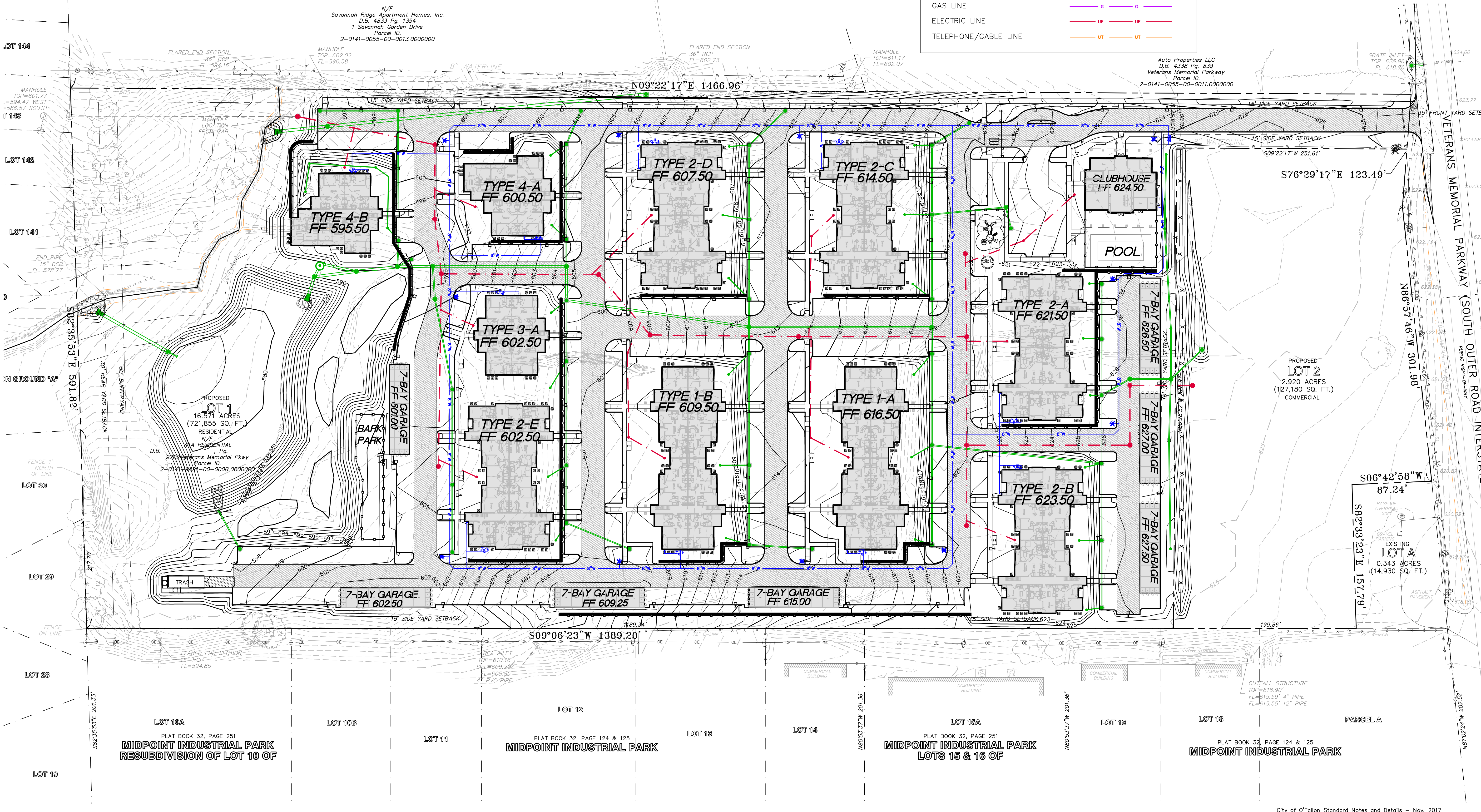
NOTE: ALL SANITARY LATERALS TO BE 6" SCHEDULE 40 PVC AT A MINIMUM 2% SLOPE.

NOTE: CONTRACTOR TO LOCATE AND VERIFY THAT EXISTING WELL HAS BEEN ABANDONED PER MDNR AND ST. CHARLES COUNTY REQUIREMENTS. CONTRACTOR TO GET DOCUMENTATION ONCE THE WELL IS UNCOVERED STATING THAT IT HAS BEEN ABANDONED PER MDNR AND ST. CHARLES COUNTY REQUIREMENTS

PROPOSED UTILITY LEGEND	
STORM SEWER	
PERFORATED STORM SEWER	
STORM SEWER STRUCTURE	
SANITARY SEWER	
SANITARY LATERAL	
SANITARY SEWER STRUCTURE	
WATERLINE	
GAS LINE	
ELECTRIC LINE	
TELEPHONE/CABLE LINE	



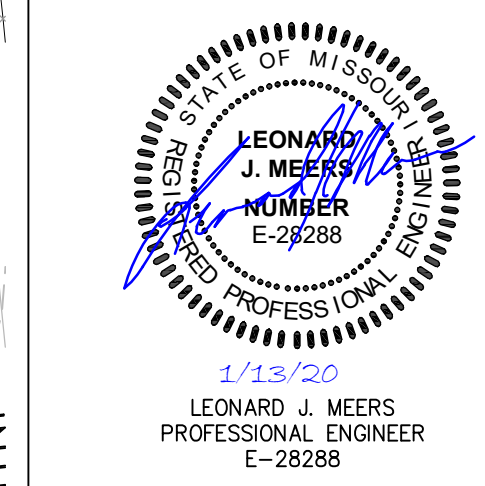
NOTE: ALL BUILDINGS ARE SLAB ON GRADE



NO.	DESCRIPTION	DATE
1	REV 1	7-24-2019
2	REV 2	8-23-2019
3	REV 4	10-25-2019
4	REV 5	11-26-2019

PROJECT TITLE
THE JEWEL
15 CASTLE LANE
O'FALLON, MO 63366

GRIMES CONSULTING, INC.
Civil Engineering & Surveying Services
12300 OLD TESSON ROAD
ST. LOUIS, MO 63128
PH. (314) 849-6100
FAX (314) 849-6010
www.grimesconsulting.com



Developer / Owner Information
VITA Residential
CONTACT: Steve Sisson
3333 Aspen Grove Dr
Franklin, TN 37067
Email: steve@vitapmg.com

P+Z No. 19-001400
Approval Date: 6/6/2019
City No.

Page No.
C6.0

UTILITY PLAN