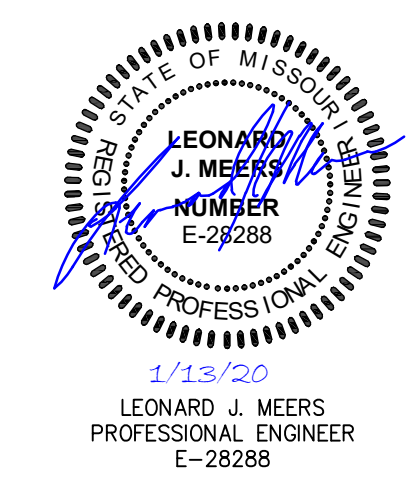


NO.	DESCRIPTION	DATE
1	REV 1	7-24-2019
2	REV 2	8-23-2019
3	REV 4	10-25-2019
4	REV 5	11-26-2019

PROJECT TITLE
THE JEWEL
15 CASTLE LANE
O'FALLON, MO 63366

GRIMES CONSULTING, INC.
Civil Engineering & Surveying Services
 12300 OLD TESSON ROAD
 ST. LOUIS, MO 63128
 PH. (314) 849-6100
 FAX (314) 849-6010
 www.grimesconsulting.com



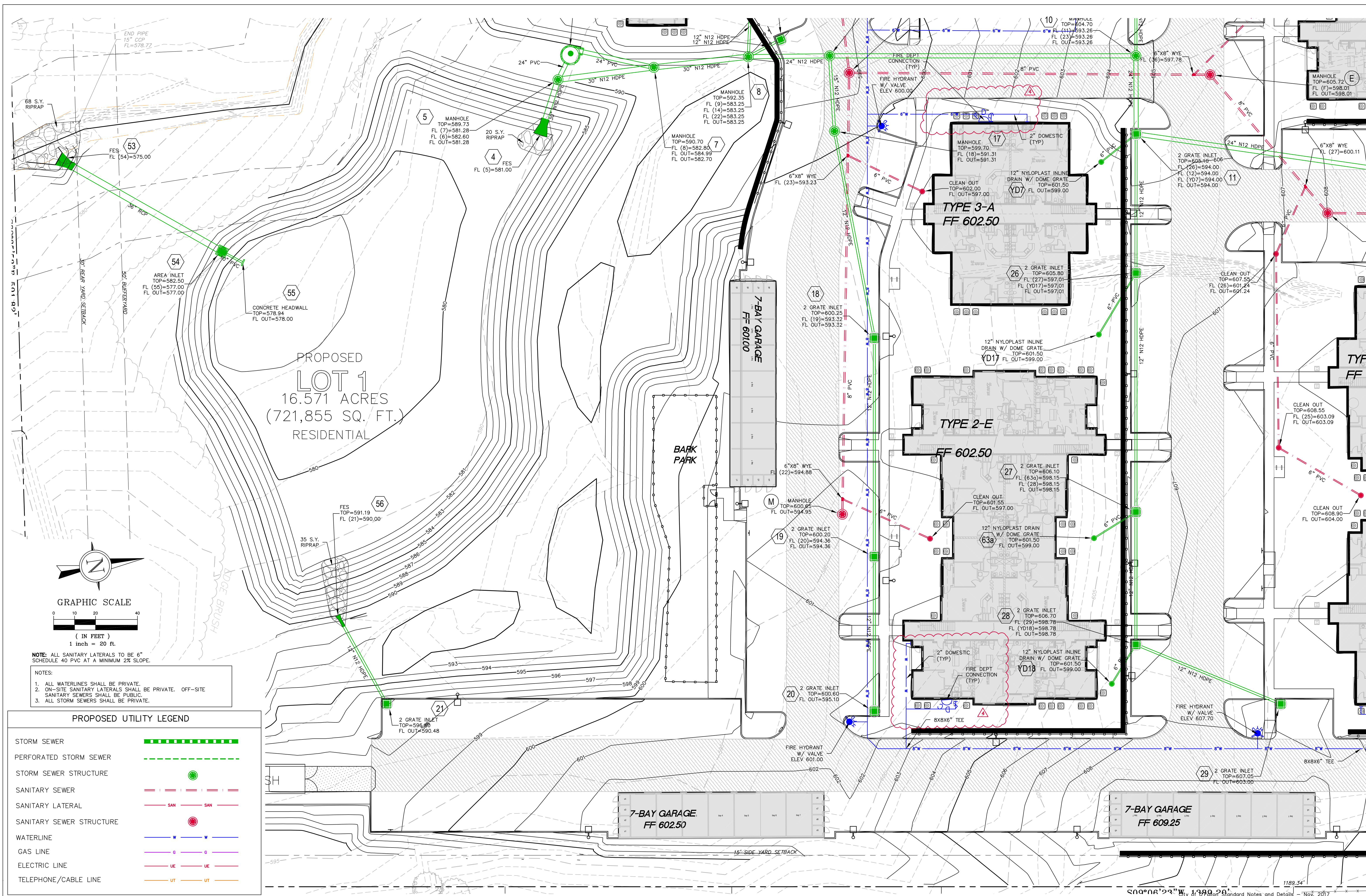
Developer / Owner Information
 VITA Residential
 CONTACT: Steve Sisson
 3333 Aspen Grove Dr
 Franklin, TN 37067
 Email: steve@vitapmg.com

UTILITY PLAN

P+Z No. 19-001400
 Approval Date: 6/6/2019

City No.

Page No.
C6.3



- NOTES:**
1. ALL WATERLINES SHALL BE PRIVATE.
 2. ON-SITE SANITARY LATERALS SHALL BE PRIVATE. OFF-SITE SANITARY SEWERS SHALL BE PUBLIC.
 3. ALL STORM SEWERS SHALL BE PRIVATE.

PROPOSED UTILITY LEGEND

STORM SEWER	
PERFORATED STORM SEWER	
STORM SEWER STRUCTURE	
SANITARY SEWER	
SANITARY LATERAL	
SANITARY SEWER STRUCTURE	
WATERLINE	
GAS LINE	
ELECTRIC LINE	
TELEPHONE/CABLE LINE	