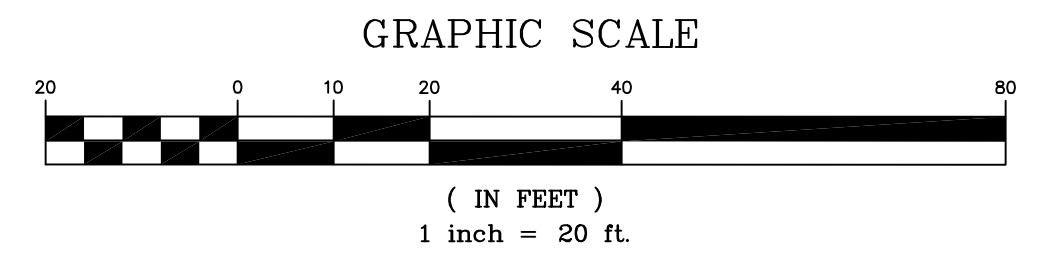
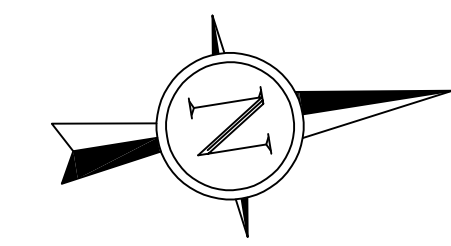


NO.	DESCRIPTION	DATE
1	REV 1	7-24-2019
2	REV 2	8-23-2019
3	REV 4	10-25-2019
4	REV 5	11-26-2019

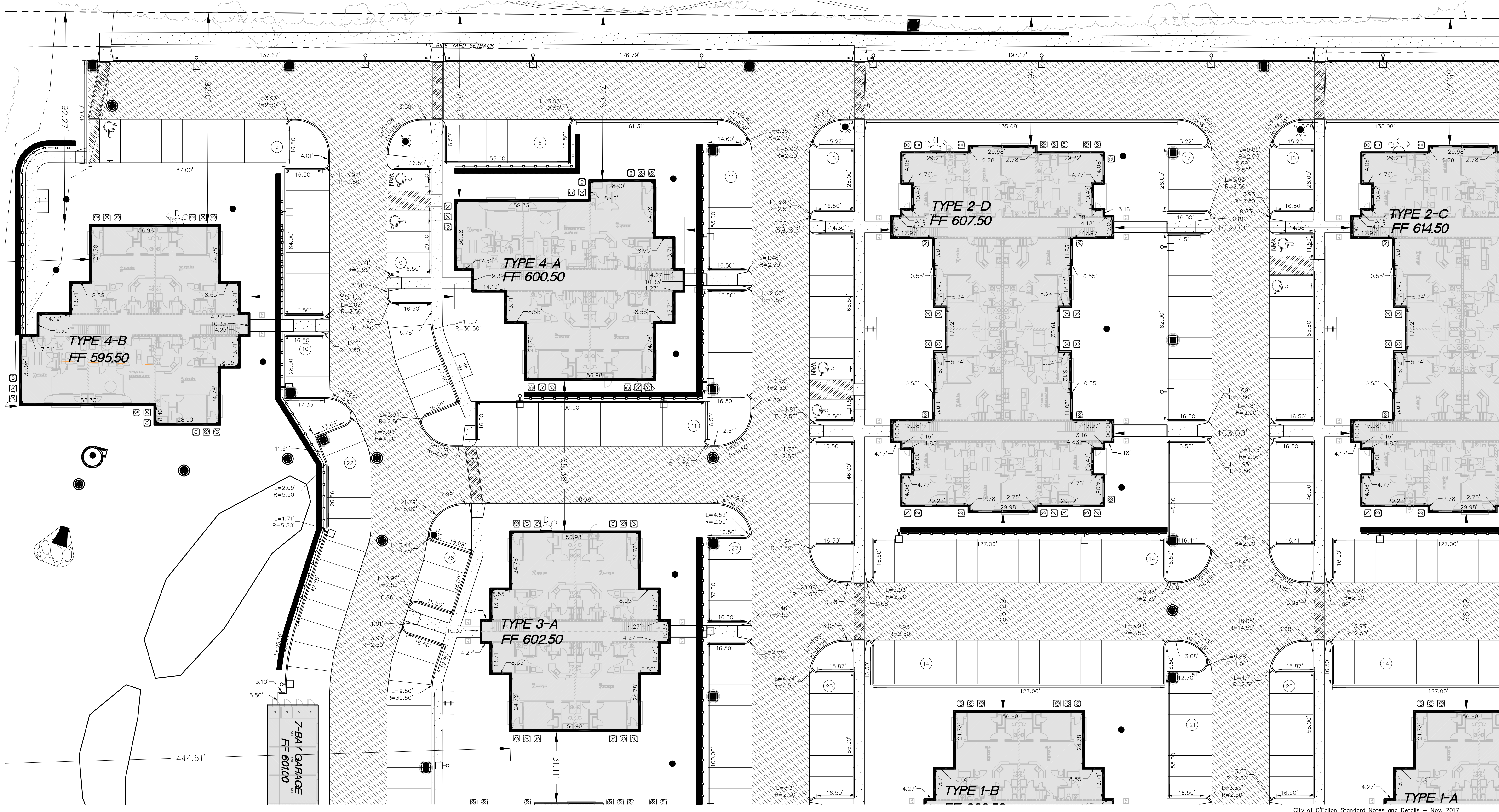
**SITE GEOMETRICS NOTES:**

- 1.) ALL DIMENSIONS ARE TO BACK OF CURB UNLESS OTHERWISE NOTED.
- 2.) ALL RADIUS TO BE 3' UNLESS OTHERWISE NOTED.
- 3.) ALL ITEMS THAT WILL BE DEMOLISHED HAVE BEEN REMOVED FOR CLARITY



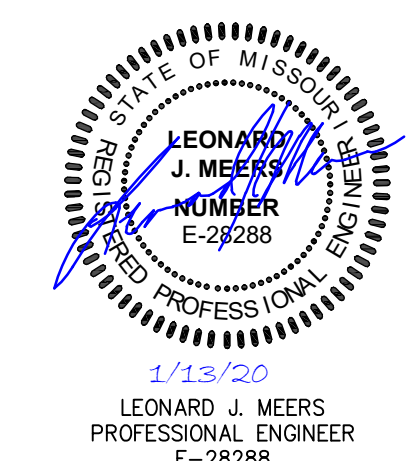
**LIGHT DUTY ASPHALT PAVEMENT**

**HEAVY DUTY ASPHALT PAVEMENT**



**PROJECT TITLE**  
THE JEWEL  
15 CASTLE LANE  
O'FALLON, MO 63366

**GRIMES CONSULTING, INC.**  
Civil Engineering & Surveying Services  
13200 OLD TESSON ROAD  
ST. LOUIS, MO 63128  
PH. (314) 849-6100  
FAX (314) 849-6010  
www.grimesconsulting.com



**Developer / Owner Information**  
VITA Residential  
CONTACT: Steve Sisson  
3333 Aspen Grove Dr  
Franklin, TN 37067  
Email: steve@vitapmg.com

P+Z No. 19-001400  
Approval Date: 6/6/2019

City No.  
Page No.  
**C7.0**

**GEOMETRIC PLAN**

City of O'Fallon Standard Notes and Details - Nov. 2017