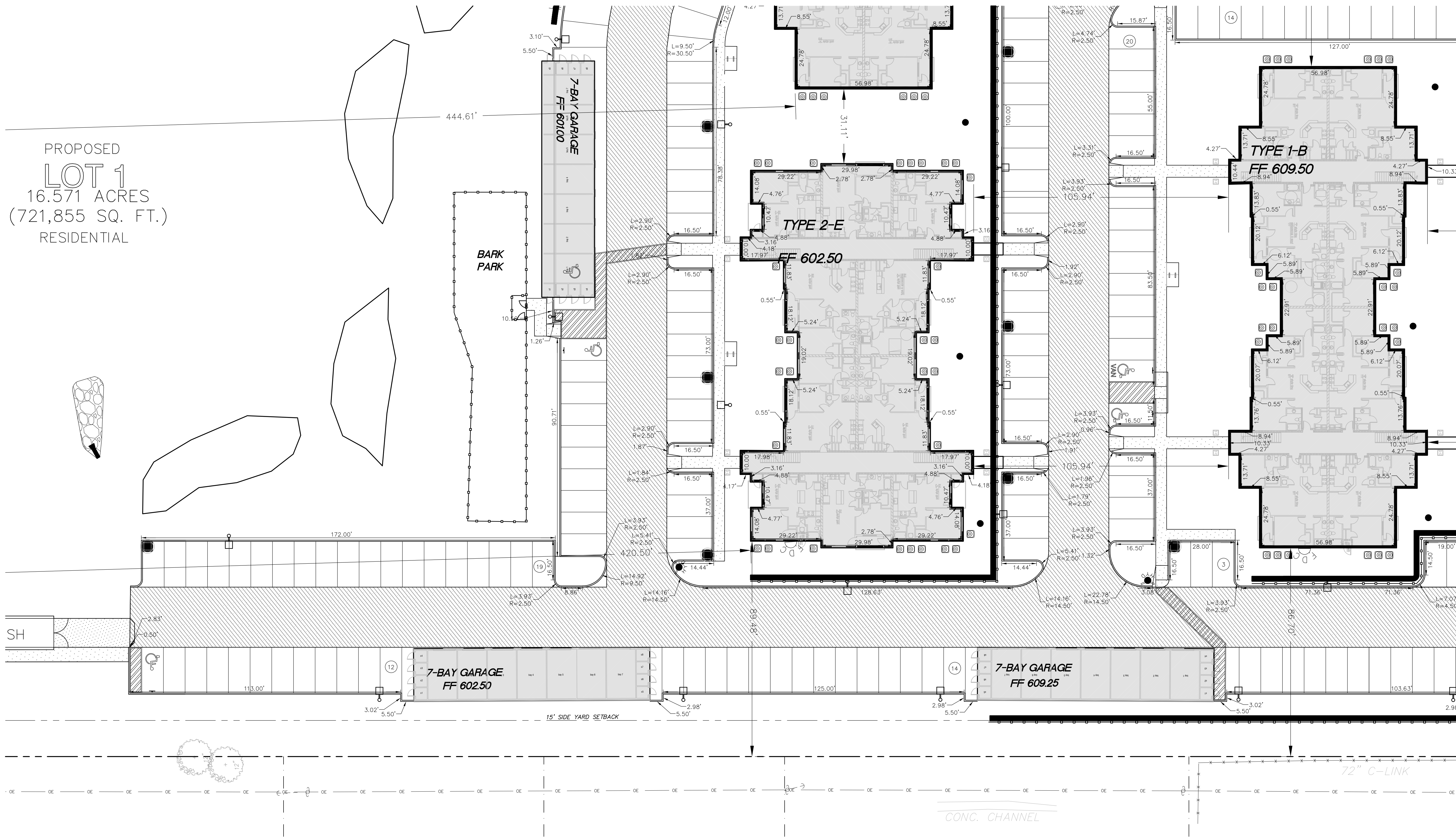
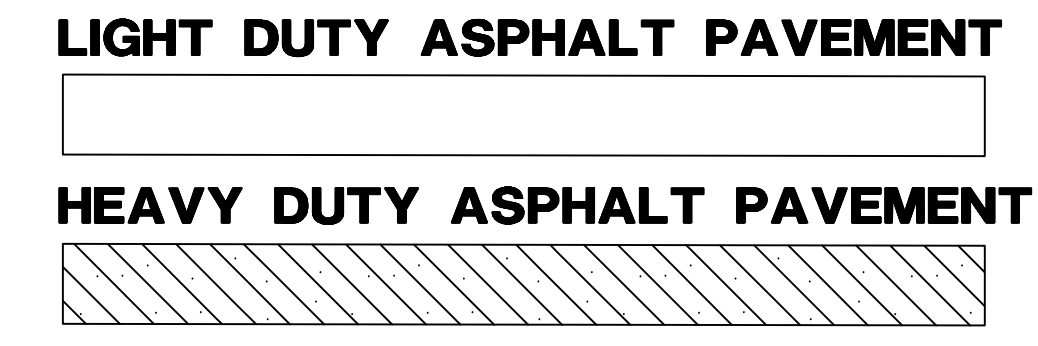
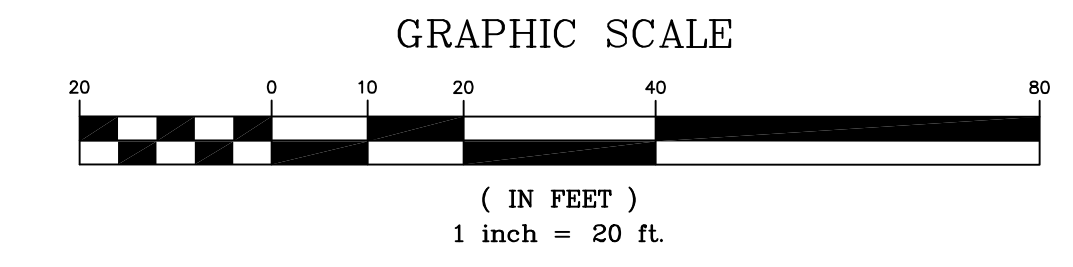
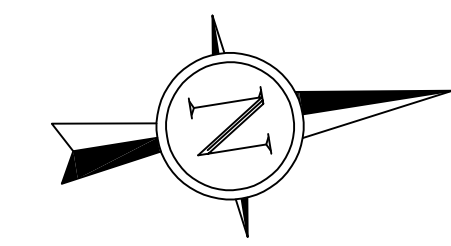


NO.	DESCRIPTION	DATE
1	REV 1	7-24-2019
2	REV 2	8-23-2019
3	REV 4	10-25-2019
4	REV 5	11-26-2019

SITE GEOMETRICS NOTES:

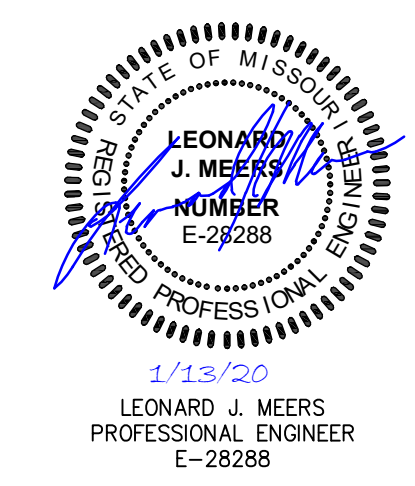
- 1.) ALL DIMENSIONS ARE TO BACK OF CURB UNLESS OTHERWISE NOTED.
- 2.) ALL RADIUS TO BE 3' UNLESS OTHERWISE NOTED.
- 3.) ALL ITEMS THAT WILL BE DEMOLISHED HAVE BEEN REMOVED FOR CLARITY



PROPOSED
LOT 1
16.571 ACRES
(721,855 SQ. FT.)
RESIDENTIAL

PROJECT TITLE
THE JEWEL
15 CASTLE LANE
O'FALLON, MO 63366

GRIMES CONSULTING, INC.
Civil Engineering & Surveying Services
GRIMES CONSULTING, INC.
PROFESSIONAL ENGINEER CORPORATION, E-1470-D
PROFESSIONAL LAND SURVEYING CORPORATION, LS-345-0
12300 OLD TESSON ROAD
ST. LOUIS, MO 63128
PH. (314) 849-6100
FAX (314) 849-6010
www.grimesconsulting.com



Developer / Owner Information
VITA Residential
CONTACT: Steve Sisson
3333 Aspen Grove Dr
Franklin, TN 37067
Email: steve@vitapmg.com

P+Z No. 19-001400
Approval Date: 6/6/2019
City No.

Page No.
C7.2

GEOMETRIC PLAN