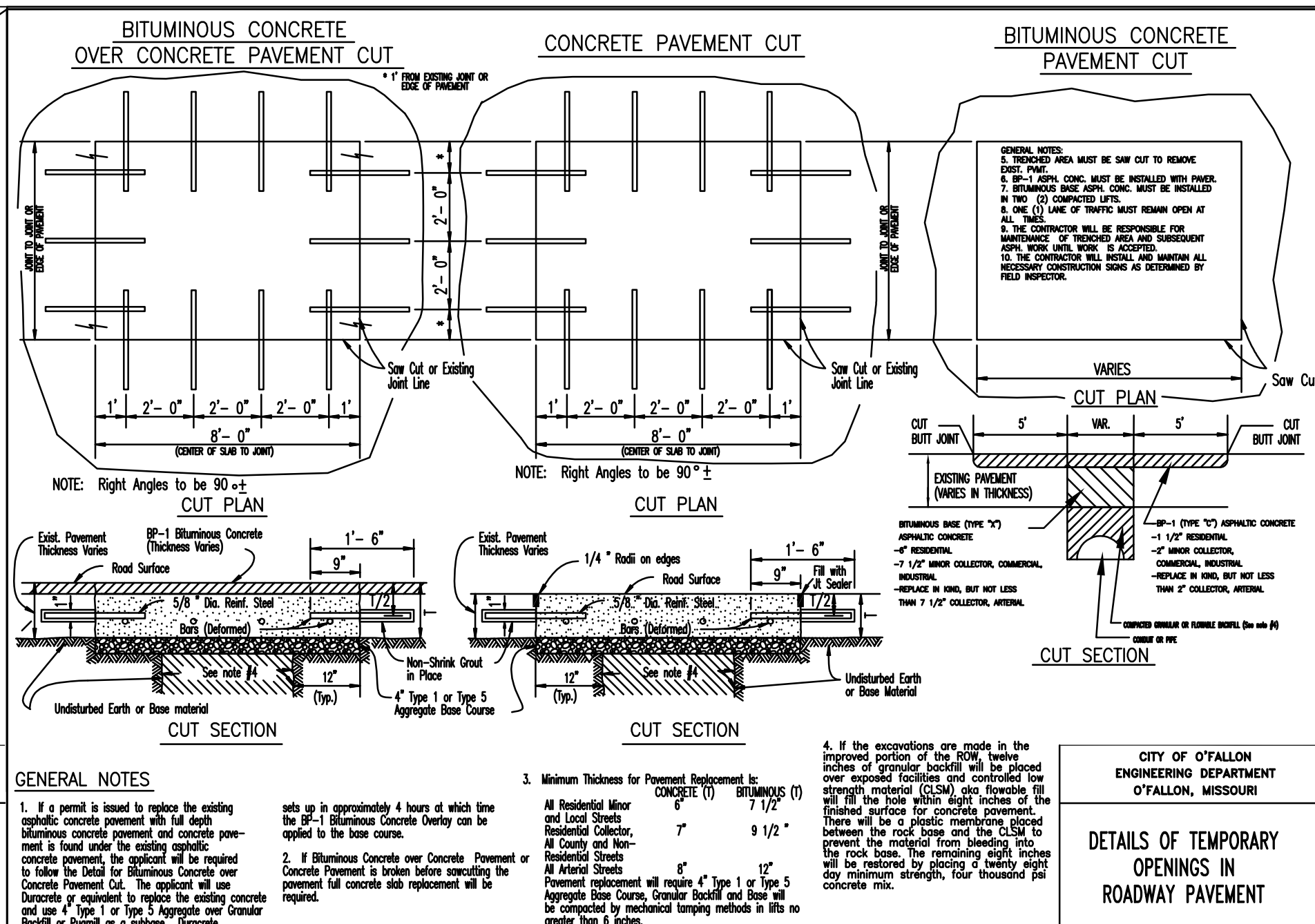
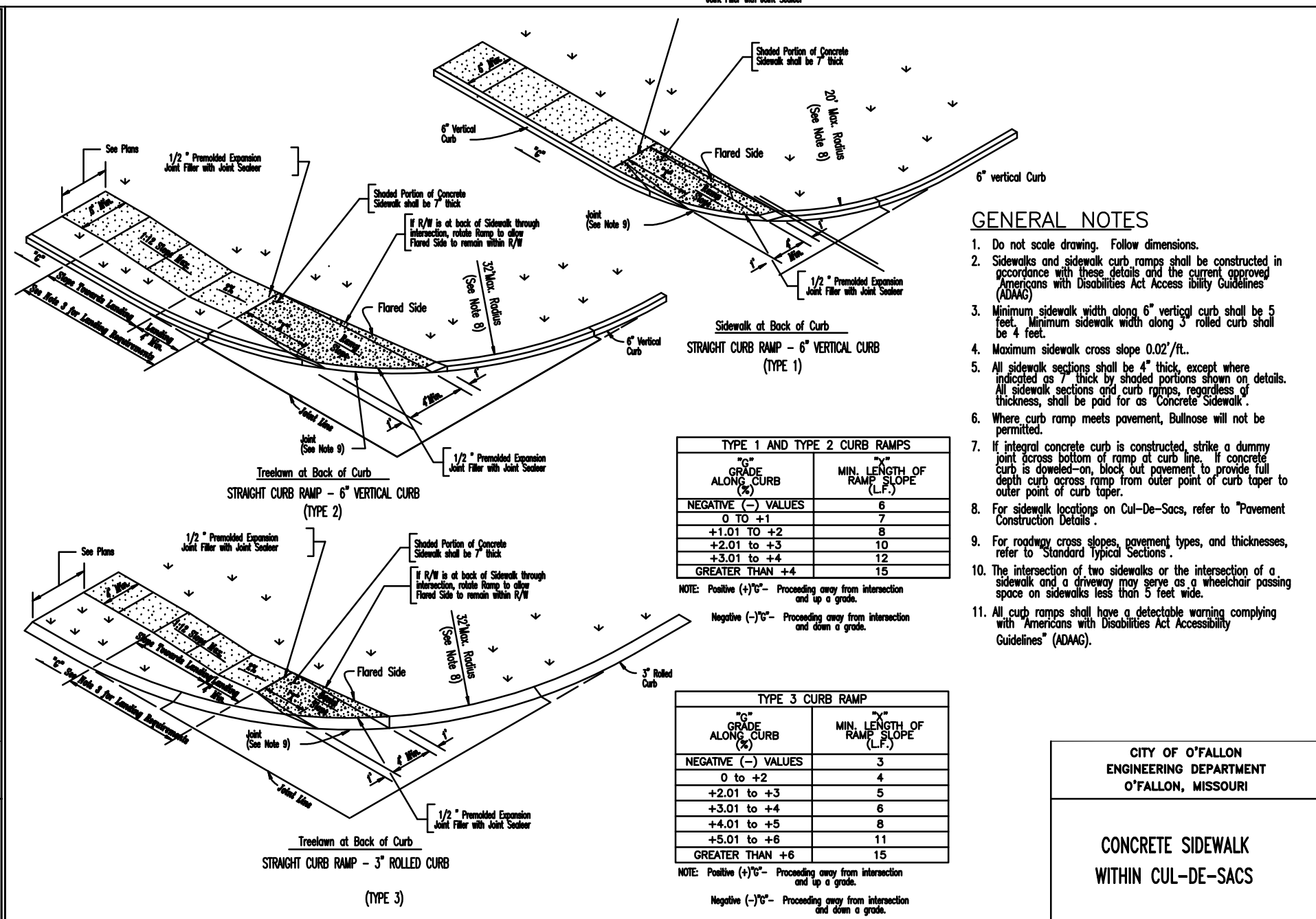


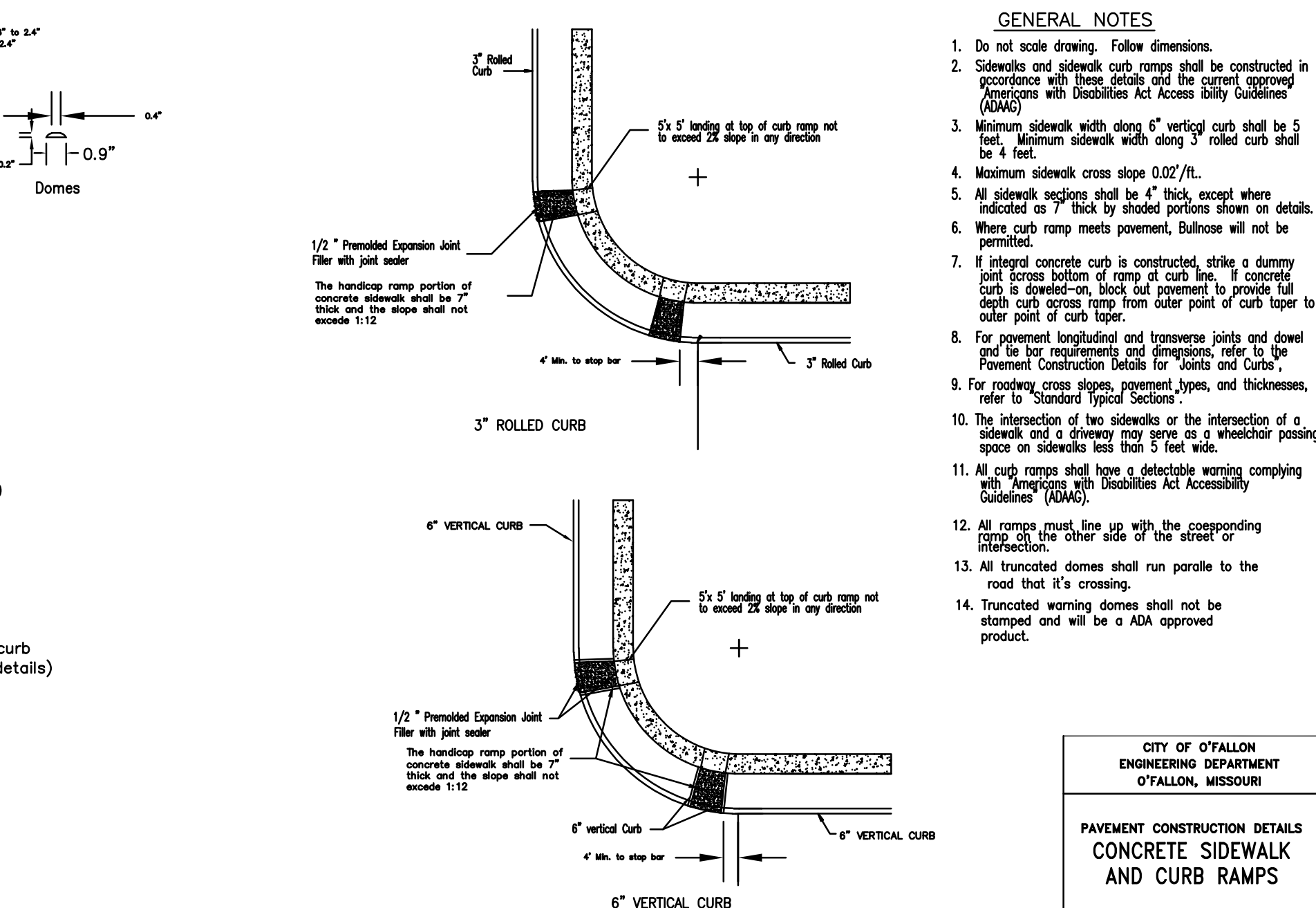
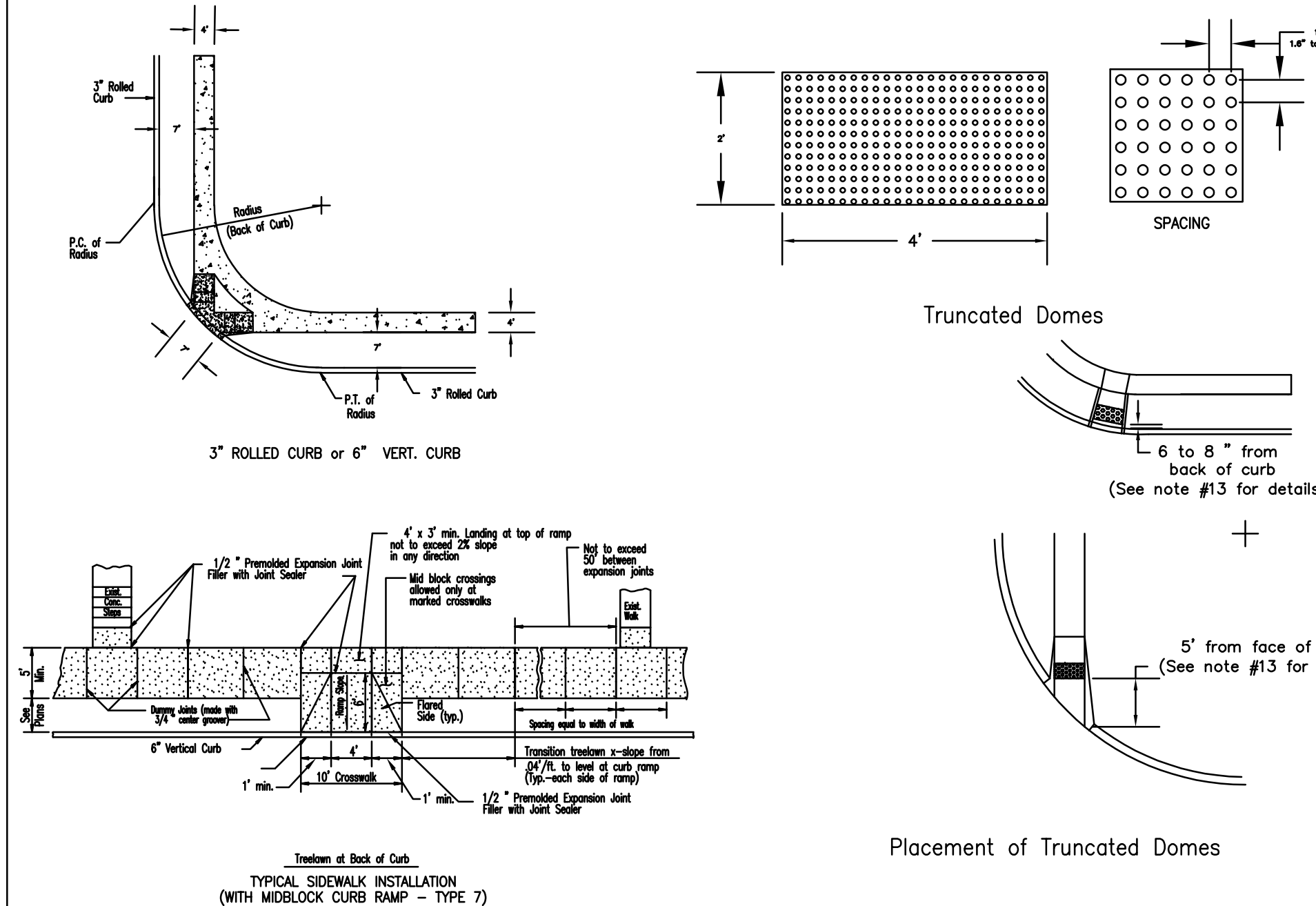
- GENERAL NOTES**
- Do not scale drawing. Follow dimensions.
 - For longitudinal and transverse joints, dowel and tie bar requirements and curb dimensions not shown refer to the Pavement Construction Details for Joints and Curbs.
 - All necessary pavement markings shall be as required by City of O'Fallon.
 - For roadway cross slopes, pavement types and thickness refer to Standard Typical Sections.
 - Permits will not be issued for building construction on sites abutting a temporary turnaround unless and until the turnaround is actually constructed.
 - The removal of the temporary turnaround surface, the restoration of the disturbed ground, and the extension of any sidewalk shall be the responsibility of the party(ies) that will be extending the street.
 - Other temporary turn around types can be considered depending on type and dimensions.
 - Stub streets over two hundred fifty (250) feet shall have a minimum temporary turnaround pavement radius of forty (40) feet, covered by a temporary turnaround easement to remain until the road is extended and platted. In lieu of turnarounds, the Planning and Zoning Commission may approve a "T" or "Y" shaped paved space on streets which are less than two hundred fifty (250) feet in length and are planned to be extended in the future.



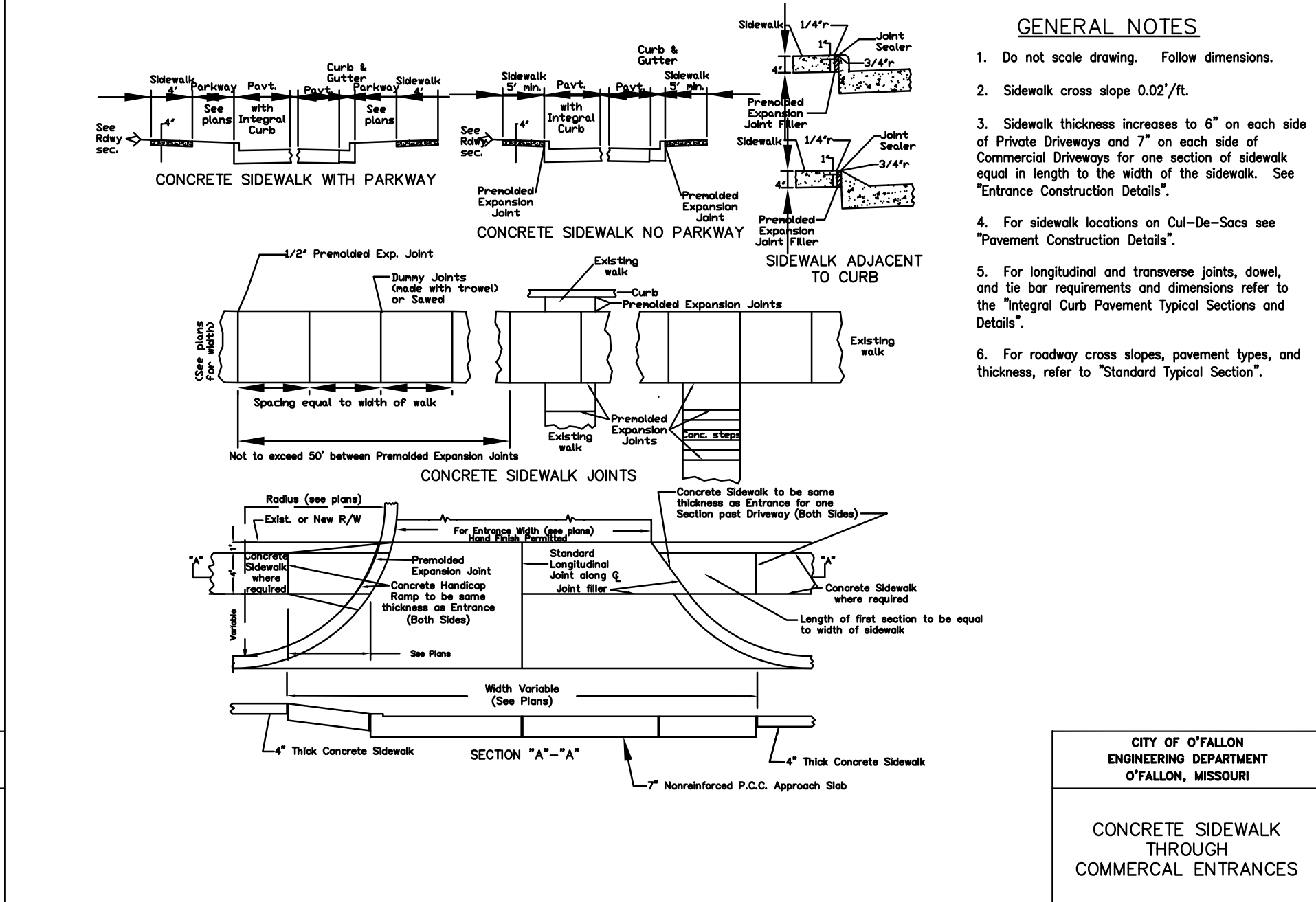
- GENERAL NOTES**
- If a permit is issued to replace the existing asphalt concrete pavement with full depth bituminous concrete pavement and concrete pavement is laid under the existing asphalt concrete pavement, the applicant will be required to allow the City Engineer to observe the concrete placement. The applicant will use concrete of equivalent to the existing concrete and of Type 1 or Type 2 Aggregate Base and will be required to provide the existing concrete with a 1/2\"/>



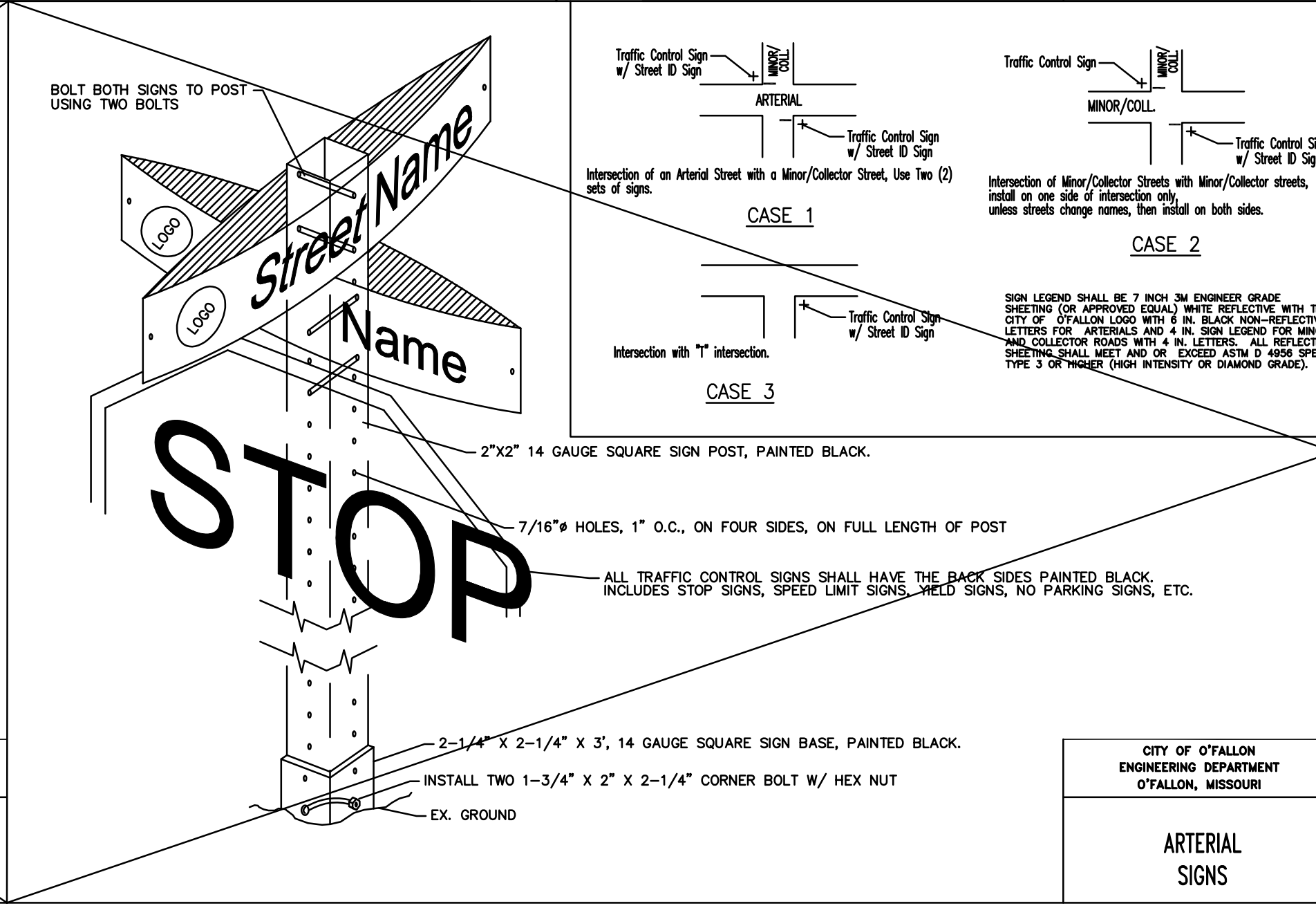
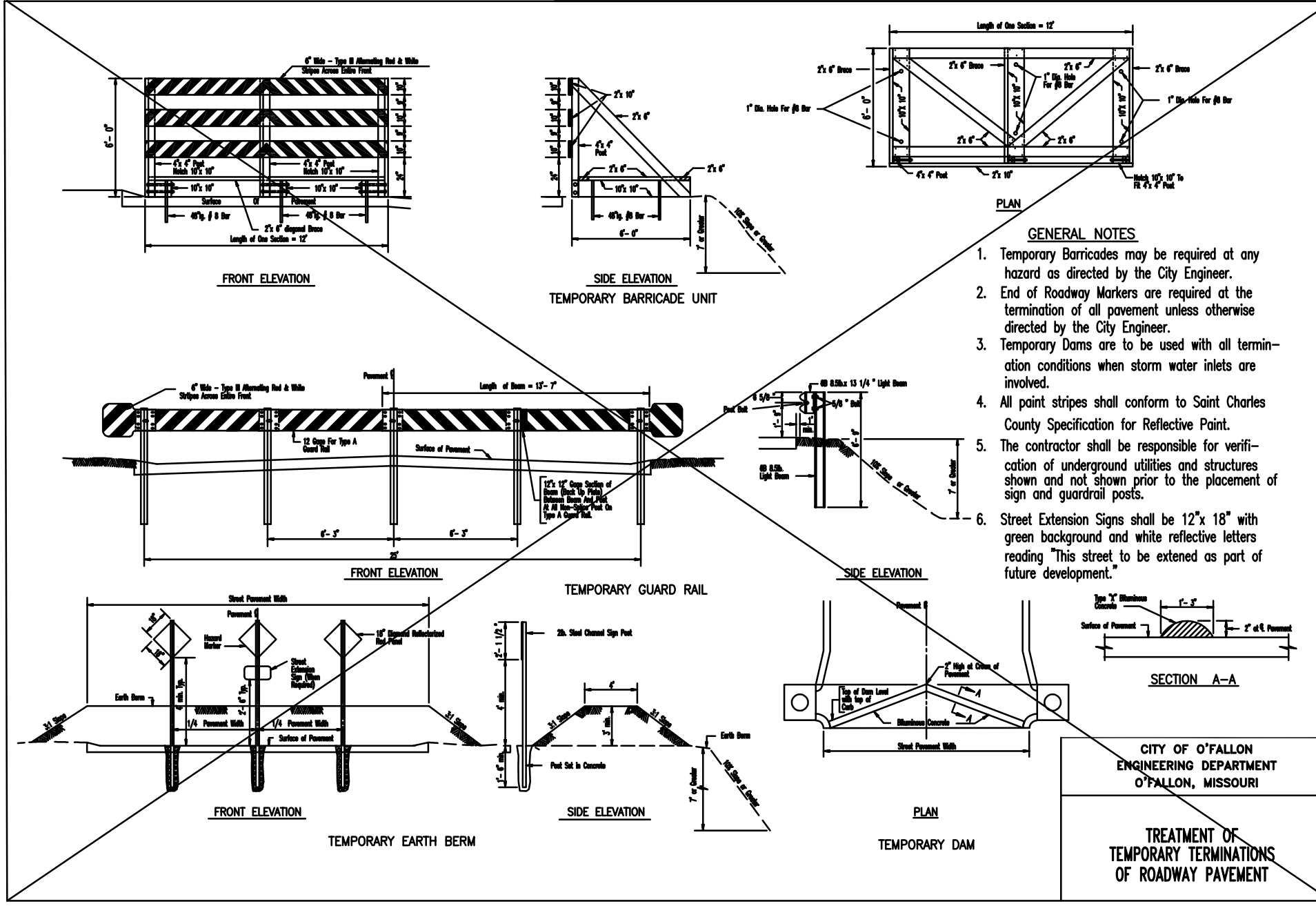
- GENERAL NOTES**
- Do not scale drawing. Follow dimensions.
 - Sidewalks and sidewalk curb ramps shall be constructed in accordance with these details and the current approved Amendments with Disabilities Act Accessibility Guidelines (ADAAG).
 - Minimum sidewalk width along 6\"/>



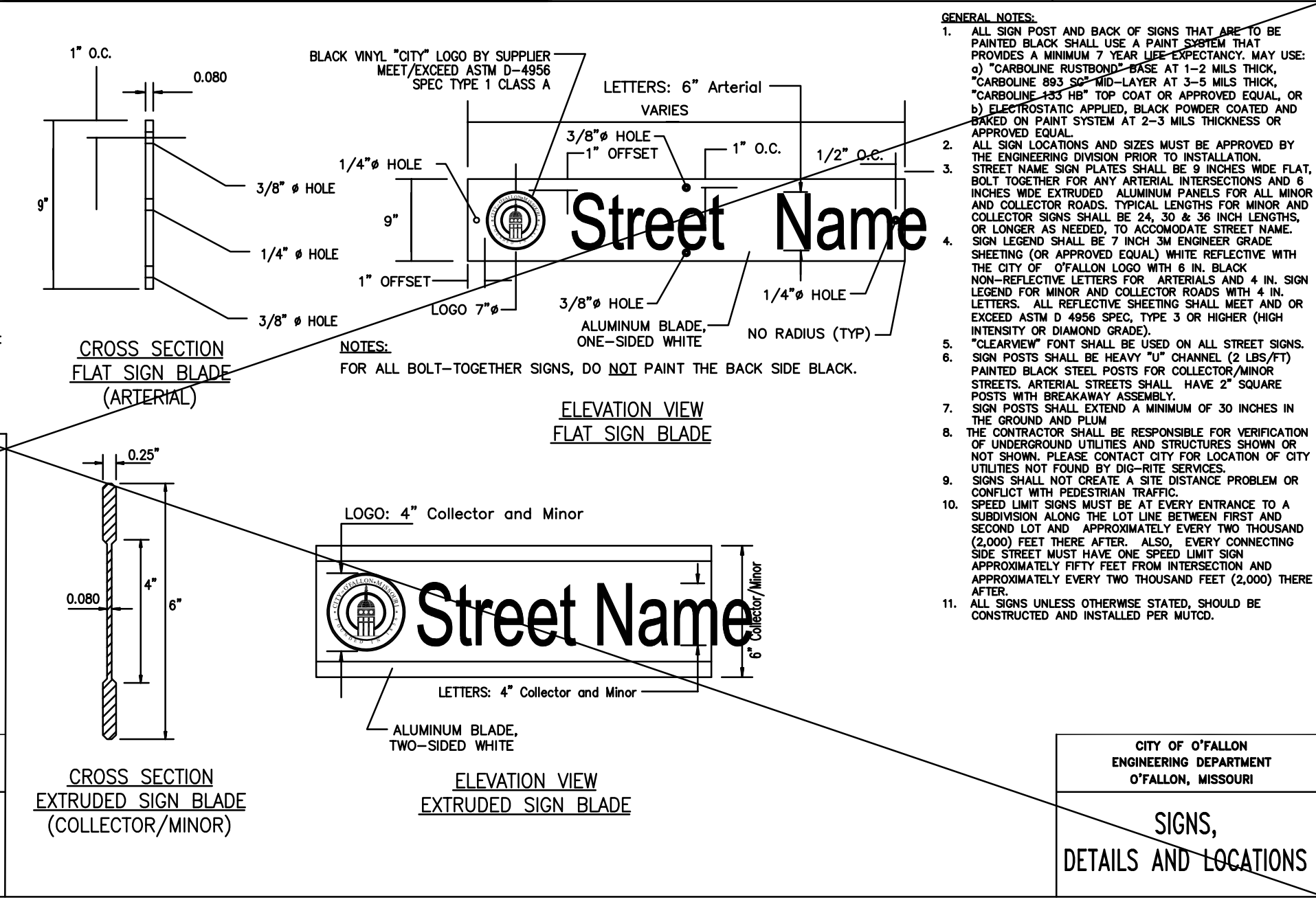
- GENERAL NOTES**
- Do not scale drawing. Follow dimensions.
 - Sidewalks and sidewalk curb ramps shall be constructed in accordance with these details and the current approved Amendments with Disabilities Act Accessibility Guidelines (ADAAG).
 - Minimum sidewalk width along 6\"/>



- GENERAL NOTES**
- Do not scale drawing. Follow dimensions.
 - Sidewalk thickness increases to 6\"/>



- GENERAL NOTES**
- Temporary barricades may be required at any location as directed by the City Engineer.
 - End of Roadway Markers are required at the termination of all pavement unless otherwise directed by the City Engineer.
 - Temporary Domes are to be used with all termination conditions when storm water inlets are involved.
 - Temporary signs shall conform to Saint Charles County Specification for Reflective Paint.
 - The contractor shall be responsible for verification of underground utilities and structures shown and not shown prior to the placement of sign and guardrail posts.
 - Street Extension Signs shall be 12\"/>

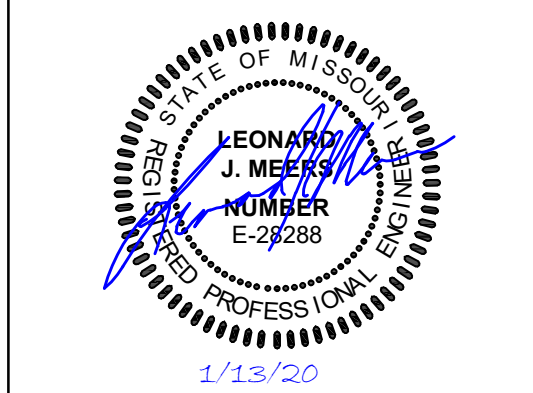


- GENERAL NOTES**
- All sign post and back of signs that are to be painted black shall use a paint system that provides a minimum 7 year life expectancy. MAY USE CARBOLINE RUSTSTOP-BASE AT 1-2 MILS THICK, CARBOLINE BBS SP-MID-LAYER AT 3-5 MILS THICK, CARBOLINE TSP TOP COAT OR APPROVED EQUAL, OR ELECTROSTATIC APPLIED, BLACK POWDER COATED AND BRACED ON PAINT SYSTEM AT 2-3 MILS THICKNESS OR APPROVED EQUAL.
 - ALL SIGN LOCATIONS AND SIZES MUST BE APPROVED BY THE ENGINEERING DIVISION PRIOR TO INSTALLATION. STREET NAME SIGN PLATES SHALL BE 8 INCHES WIDE FLAT, BOLT TOGETHER FOR ANY ARTERIAL INTERSECTIONS AND 6 INCHES WIDE EXTRUDED ALUMINUM PANELS FOR ALL MINOR AND COLLECTOR ROADS. TYPICAL LENGTHS FOR MINOR AND COLLECTOR SIGNS SHALL BE 24, 30, & 36 INCH LENGTHS OR LONGER AS NEEDED TO ACCOMMODATE STREET NAME. SIGN LEGEND SHALL BE 7 INCH ON ENGINEER GRADE SHEETING (OR APPROVED EQUAL) WHITE REFLECTIVE WITH THE CITY OF O'FALLON LOGO WITH 6 IN. BLACK NON-REFLECTIVE LETTERS FOR ARTERIALS AND 4 IN. SIGN LEGEND FOR MINOR AND COLLECTOR SIGNS WITH 4 IN. LETTERS. ALL REFLECTIVE SHEETING SHALL MEET OR EXCEED ASTM D 4956 SPEC. TYPE 3 OR HIGHER (HIGH INTENSITY OF DIAMOND GRADE).
 - CLEARVIEW FONT SHALL BE USED ON ALL STREET SIGNS. SIGN POSTS SHALL BE HEAVY 1\"/>

NO.	DESCRIPTION	DATE
1	REV 1	7-24-2019
2	REV 2	8-23-2019
3	REV 4	10-25-2019
4	REV 5	11-26-2019

PROJECT TITLE
THE JEWEL
15 CASTLE LANE
O'FALLON, MO 63366

GRIMES CONSULTING, INC.
Civil Engineering & Surveying Services
 GRIMES CONSULTING, INC.
 PROFESSIONAL ENGINEER CORPORATION, E-1470-D
 PROFESSIONAL LAND SURVEYING CORPORATION, LS-345-0
 13200 OLD TESSON ROAD
 ST. LOUIS, MO 63128
 PH. (314) 849-6100
 FAX (314) 849-6010
 www.grimesconsulting.com



LEONARD J. WEERS
 PROFESSIONAL ENGINEER
 E-28288

Developer / Owner Information
VITA Residential
 CONTACT: Steve Sisson
 3333 Aspen Grove Dr
 Franklin, TN 37067
 Email: steve@vitapmg.com

P+Z No. 19-001400
Approval Date: 6/6/2019

City No.
Page No.
C8.4