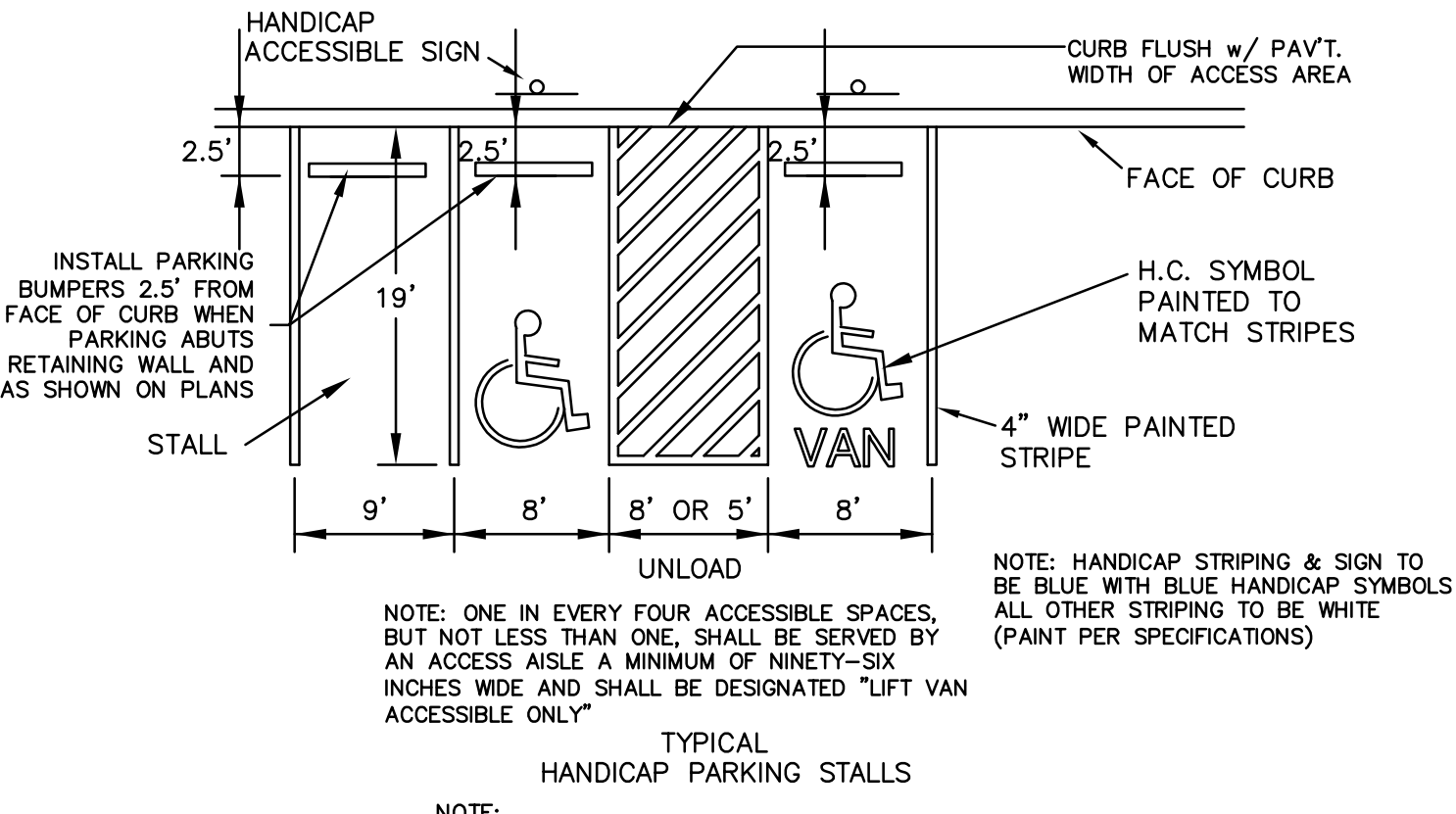
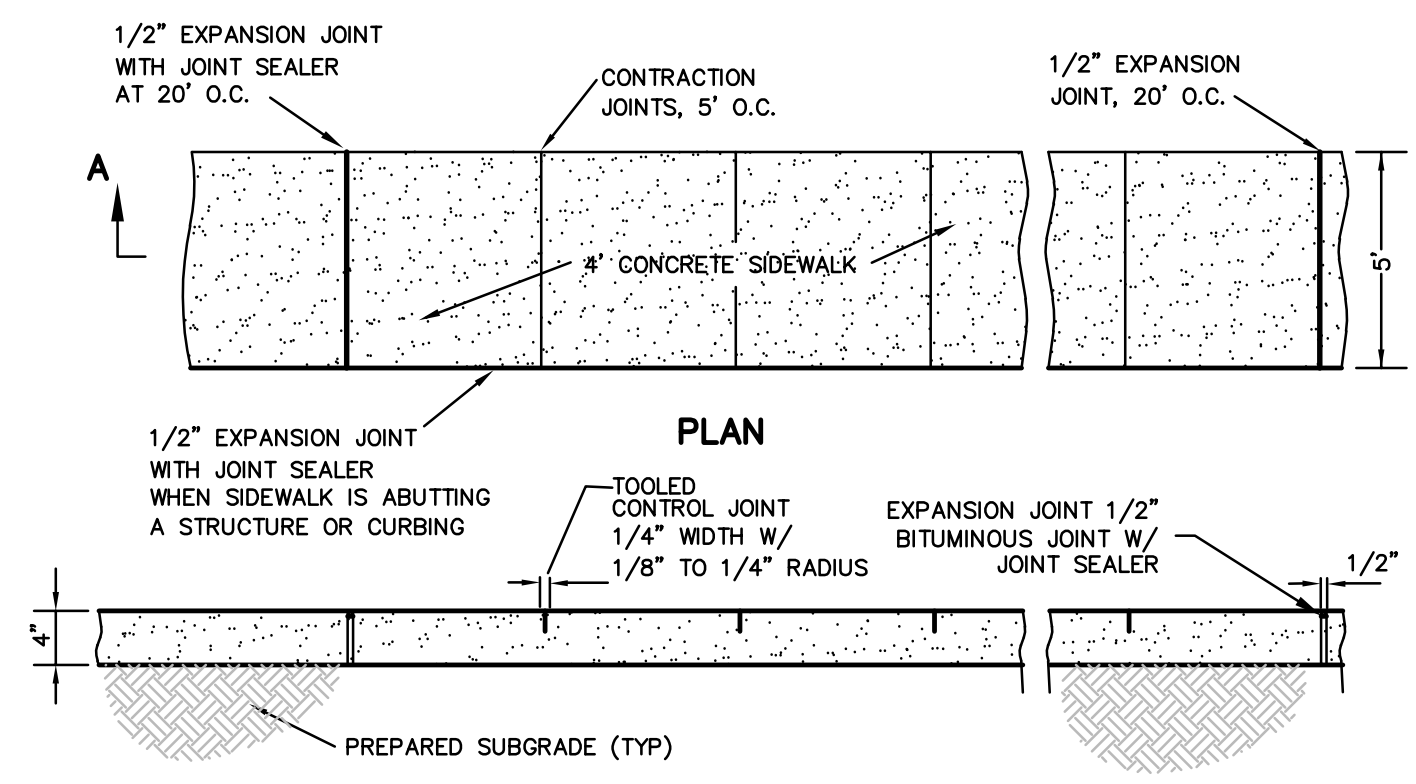


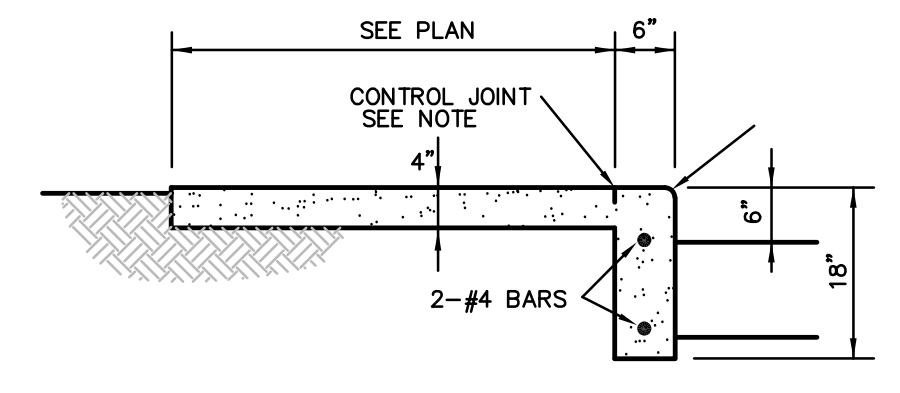
1 ADA PARKING SIGN
C8.5 SCALE : NTS



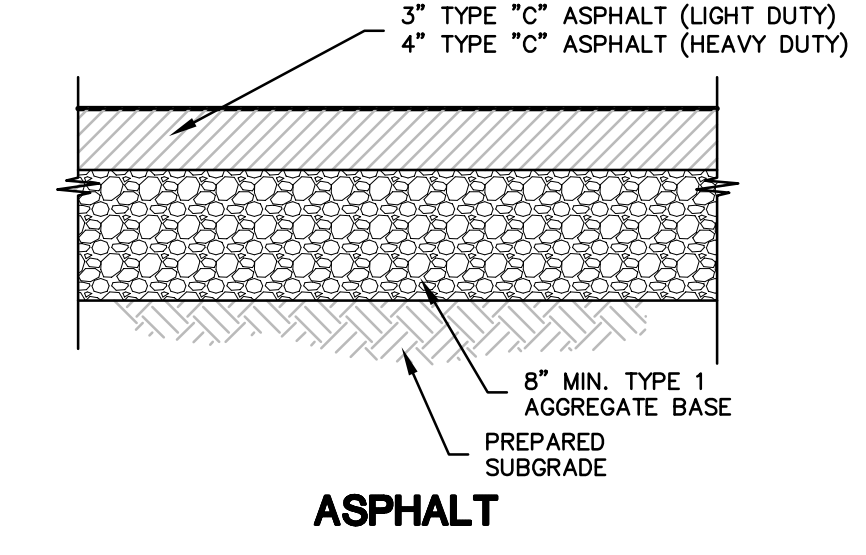
2 ADA PARKING DETAIL
C8.5 SCALE : NTS



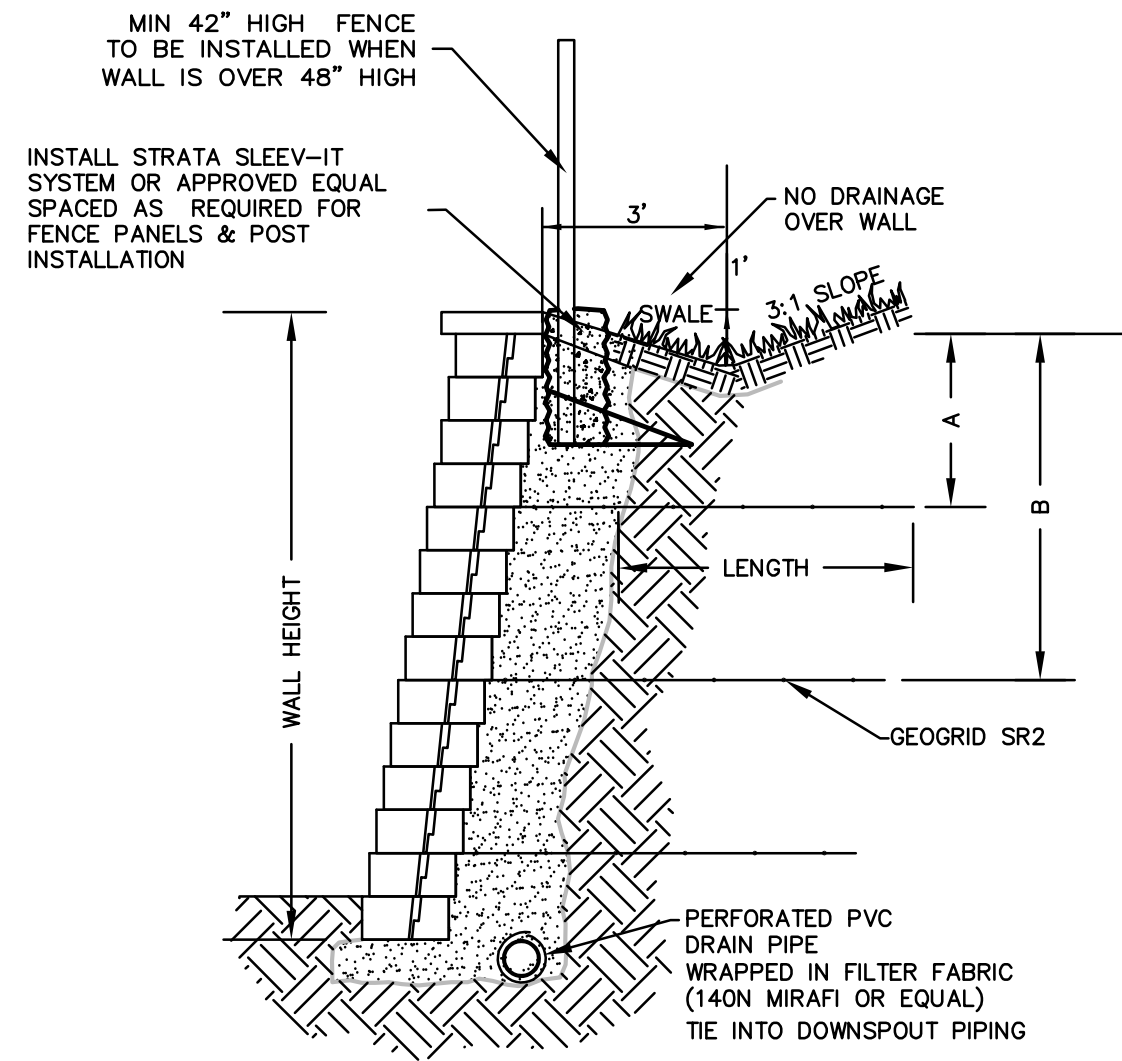
3 CONCRETE SIDEWALK DETAIL
C8.5 SCALE : NTS



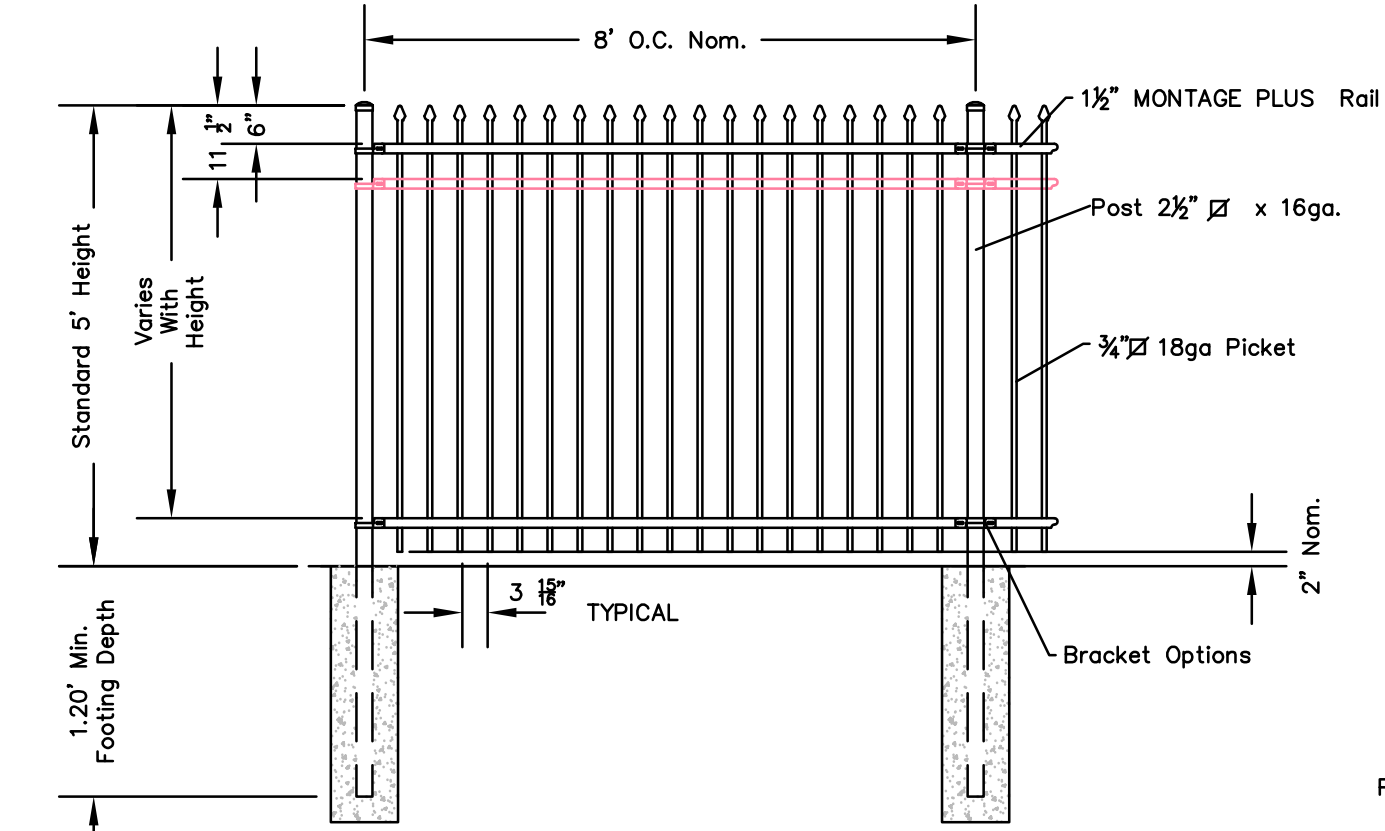
4 INTEGRAL SIDEWALK & CURB
C8.5 SCALE : NTS



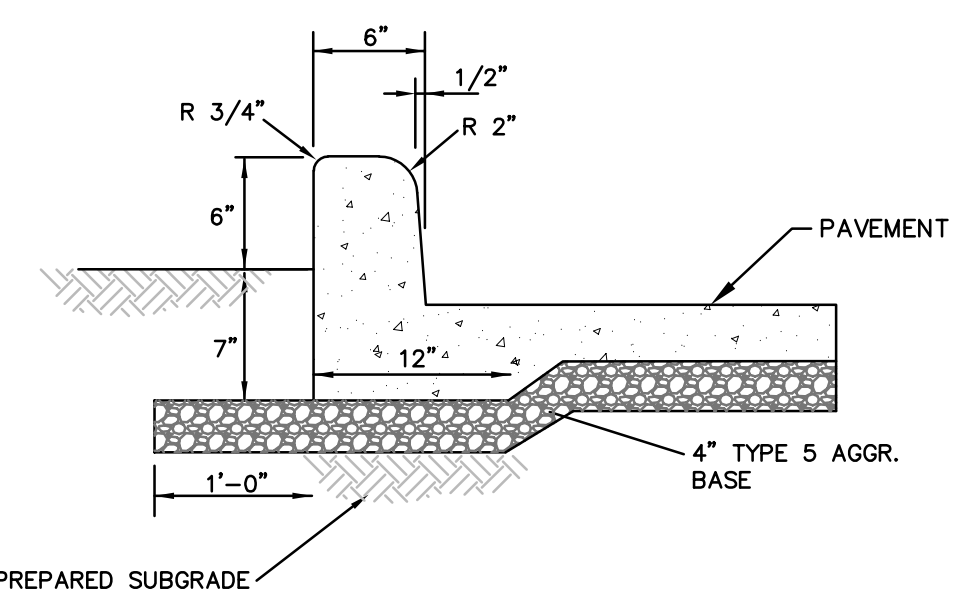
5 PAVEMENT DETAIL
C8.5 SCALE : NTS



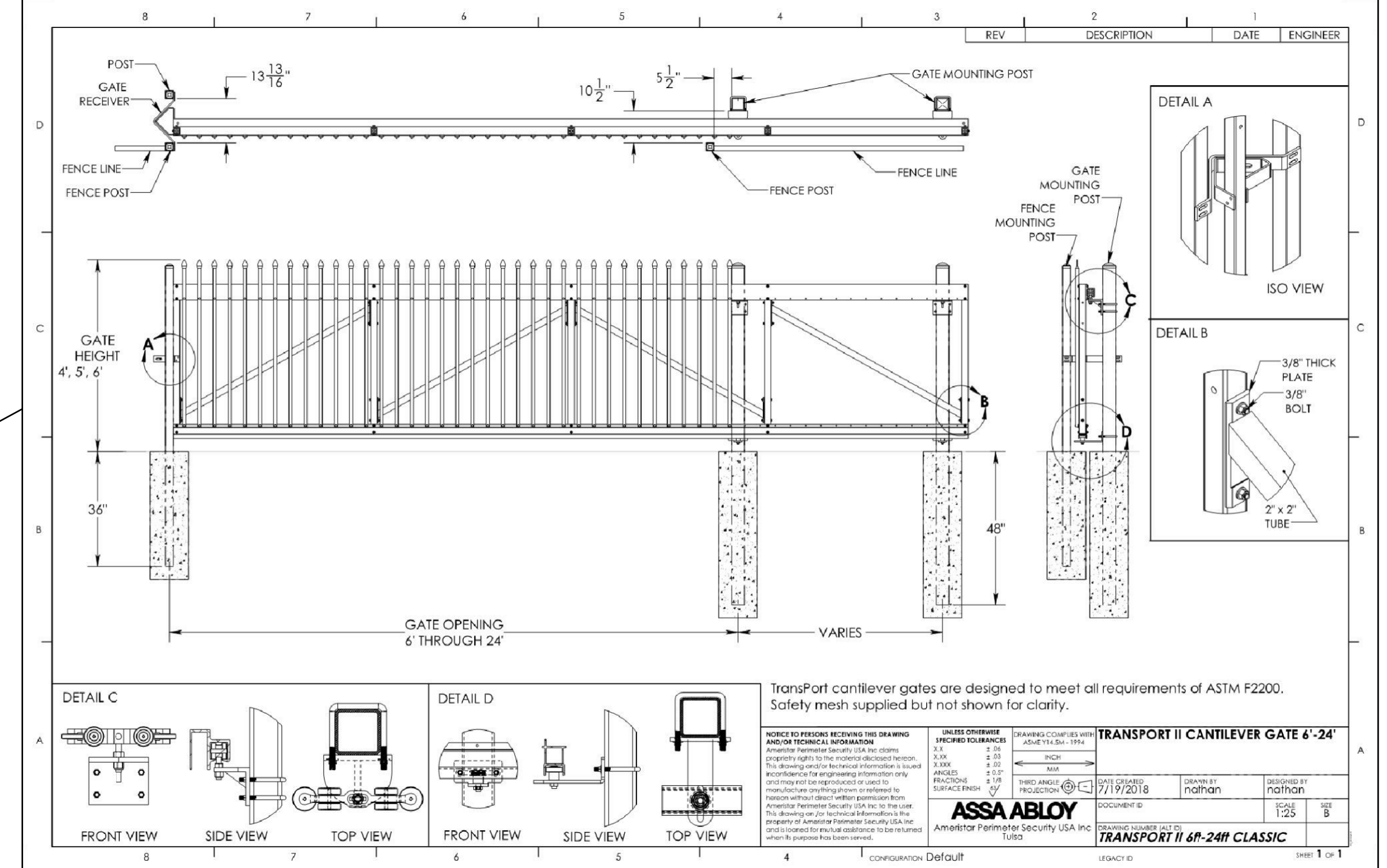
6 MODULAR BLOCK RETAINING WALL
C8.5 SCALE : NTS



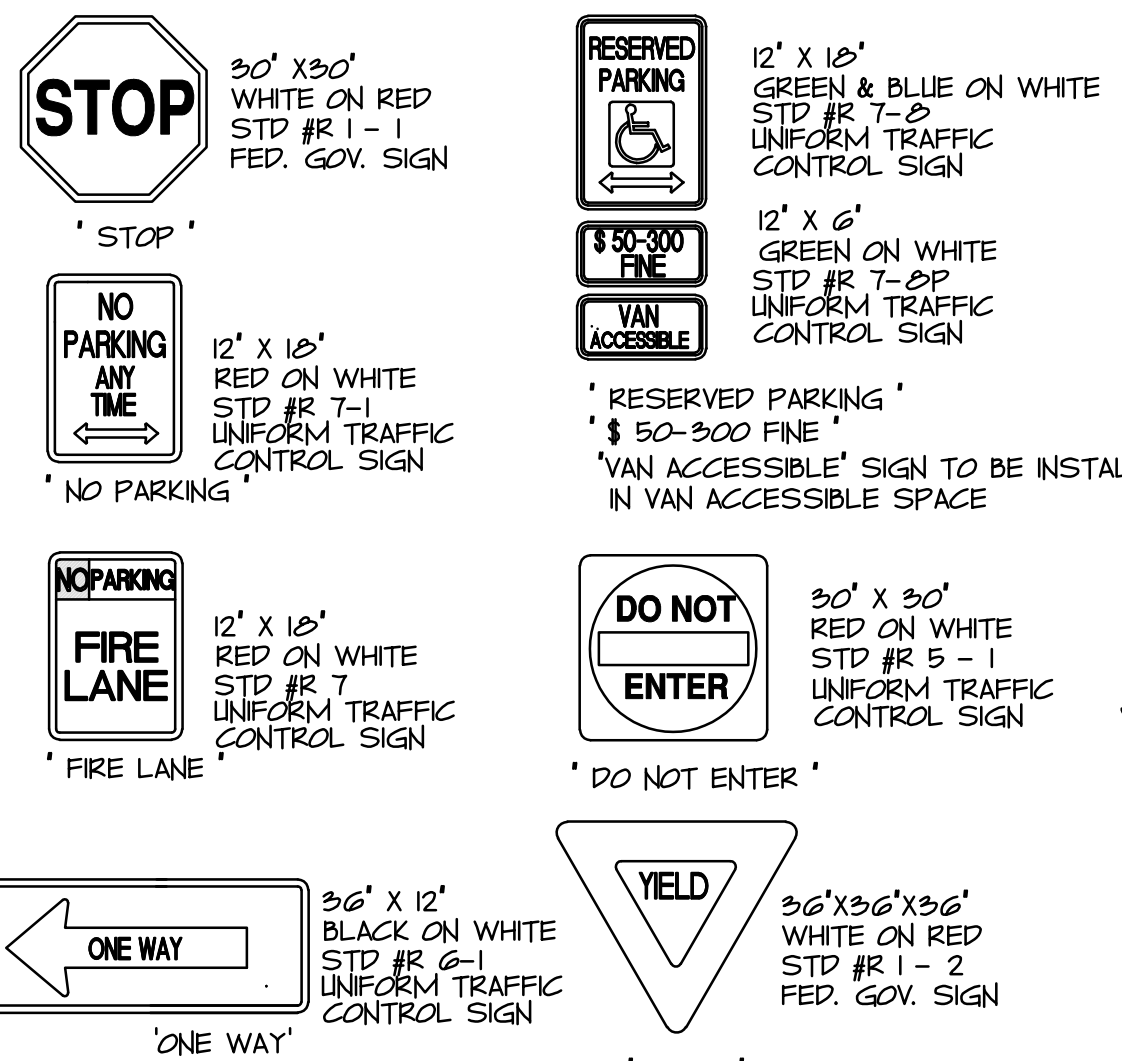
7 DECORATIVE FENCE DETAIL
C8.5 SCALE : NTS



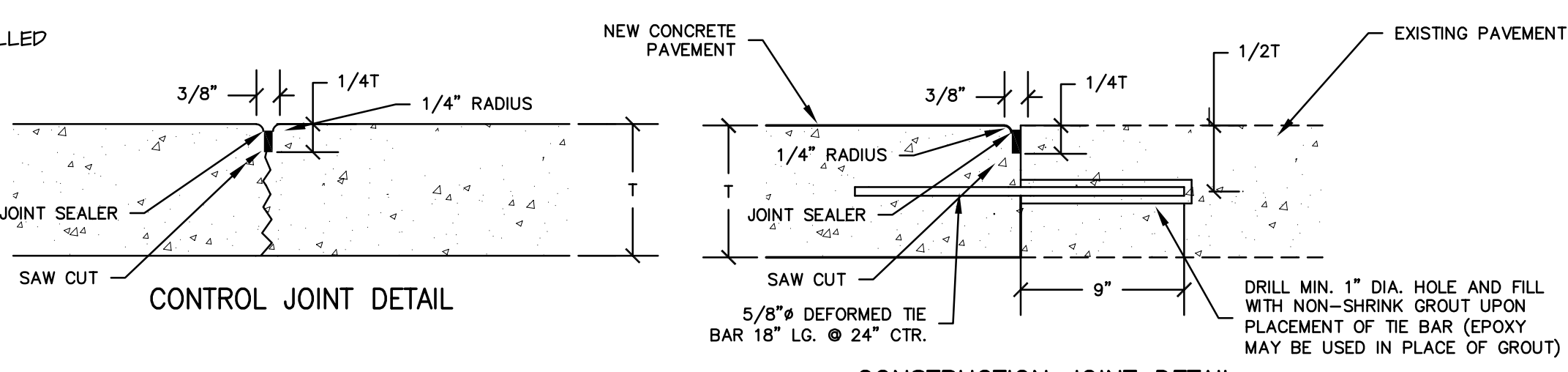
8 CONCRETE CURB DETAIL
C8.5 SCALE : NTS



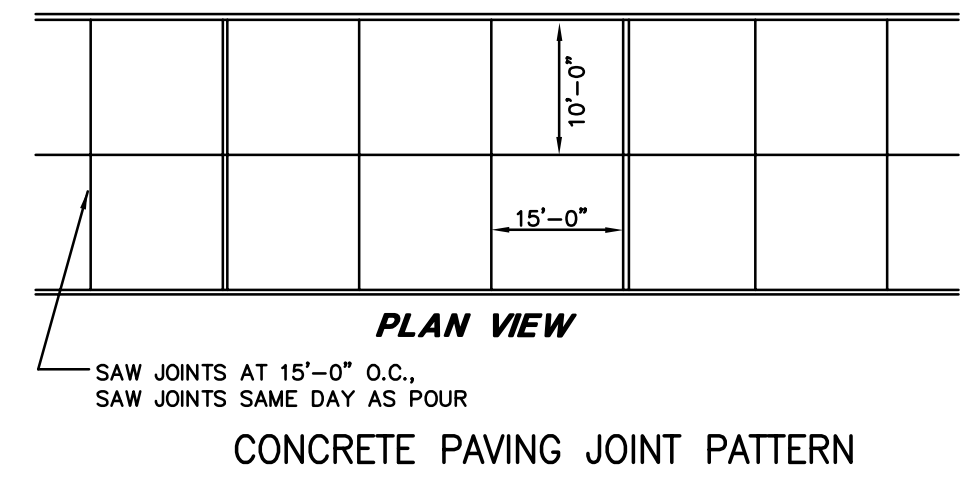
9 VEHICLE GATE DETAIL
C8.5 SCALE : NTS



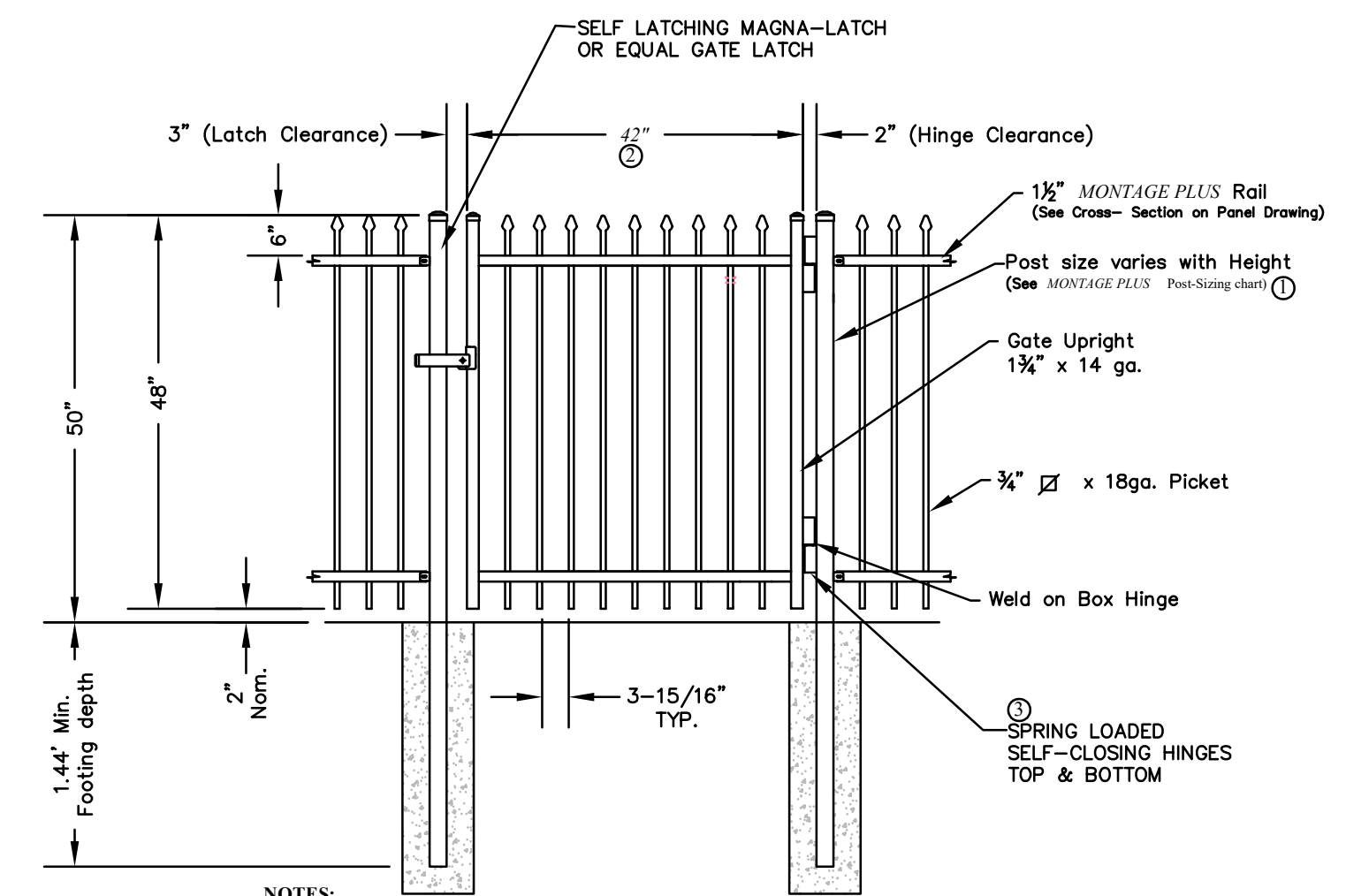
10 TRAFFIC SIGN DETAIL
C8.5 SCALE : NTS



11 CONCRETE JOINTS DETAIL
C8.5 SCALE : NTS



CONCRETE PAVING JOINT PATTERN



12 POOL & BARK PARK GATE DETAIL
C8.5 SCALE : NTS

NO.	DESCRIPTION	DATE
1	REV 1	7-24-2019
2	REV 2	8-23-2019
3	REV 4	10-25-2019
4	REV 5	11-26-2019

PROJECT TITLE
THE JEWEL
15 CASTLE LANE
O'FALLON, MO 63366

GRIMES CONSULTING, INC.
Civil Engineering & Surveying Services
12300 OLD TESSON ROAD
ST. LOUIS, MO 63128
PH. (314) 849-6100
FAX (314) 849-6010
www.grimesconsulting.com

LEONARD J. MEERS
PROFESSIONAL ENGINEER
E-28288

Developer / Owner Information
VITA Residential
CONTACT: Steve Sisson
3333 Aspen Grove Dr
Franklin, TN 37067
Email: steve@vitapmg.com

P+Z No. 19-001400
Approval Date: 6/6/2019

City No.

Page No.
C8.5

SITE DETAILS