

NOTE: COMPACTED GRANULAR FILL IS REQUIRED BETWEEN SEWER/WATER MAIN PIPES AT EVERY LOCATION THAT PIPES CROSS OVER/UNDER OTHER PIPES.

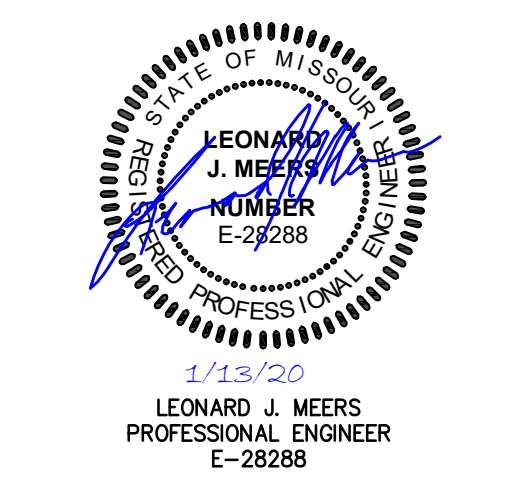
5 VERT.
 30 HORIZ.
 SCALE:

NO.	DESCRIPTION	DATE
1	REV 1	7-24-2019
2	REV 2	8-23-2019
3	REV 4	10-25-2019
4	REV 5	11-26-2019

PROJECT TITLE
 THE JEWEL
 15 CASTLE LANE
 O'FALLON, MO 63366

GRIMES CONSULTING, INC.
Civil Engineering & Surveying Services
 12300 OLD TESSON ROAD
 ST. LOUIS, MO 63128
 PH. (314) 849-6100
 FAX (314) 849-6010
 www.grimesconsulting.com

GRIMES CONSULTING, INC.
 PROFESSIONAL ENGINEER CORPORATION, E-1470-D
 PROFESSIONAL LAND SURVEYING CORPORATION, LS-340-0



Developer / Owner Information
 VITA Residential
 CONTACT: Steve Sisson
 3333 Aspen Grove Dr
 Franklin, TN 37067
 Email: steve@vitaprmg.com

SANITARY PROFILES

P+Z No. 19-001400
 Approval Date: 6/6/2019
 City No.

Page No.
C9.5