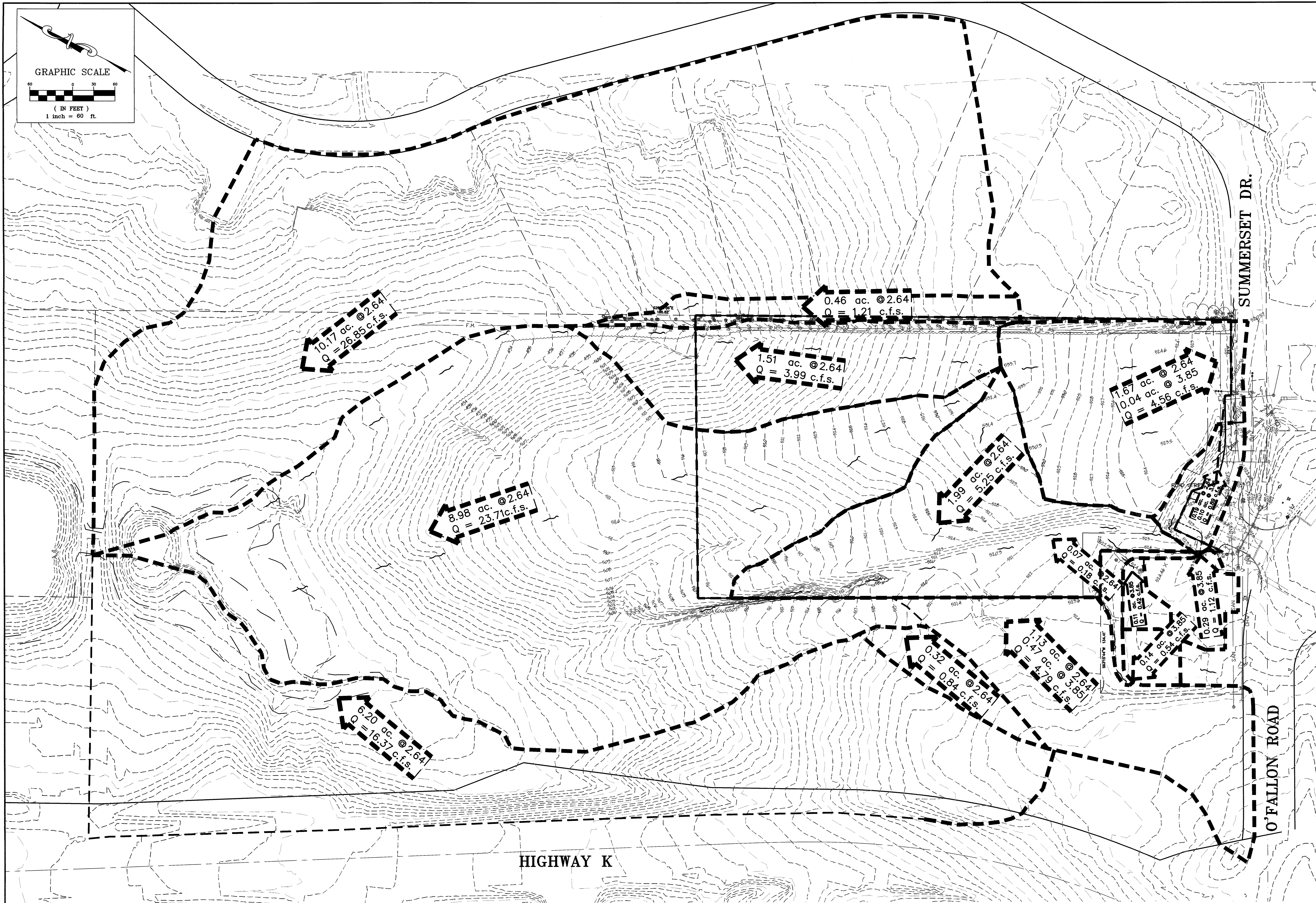
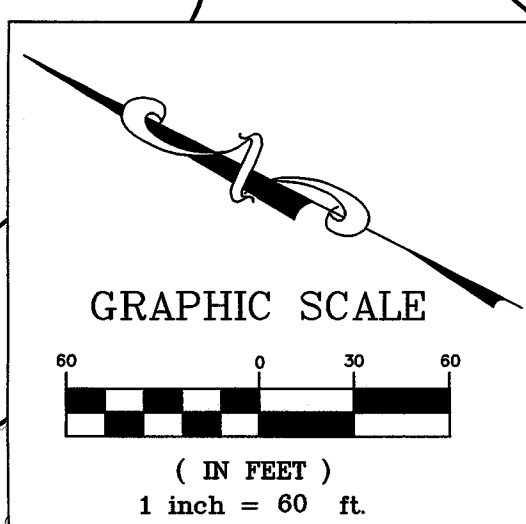


\\NAUTSERVER\Civil\13d Projects\13901B OFALLON SENIOR LIVING\Construction\13901B Con.dwg, 11/2/2016 1:59:10 PM, 1:1



10.17 ac. @ 2.64
Q = 26.85 c.f.s.

8.98 ac. @ 2.64
Q = 23.71 c.f.s.

6.20 ac. @ 2.64
Q = 16.37 c.f.s.

1.51 ac. @ 2.64
Q = 3.99 c.f.s.

0.46 ac. @ 2.64
Q = 1.21 c.f.s.

1.99 ac. @ 2.64
Q = 5.25 c.f.s.

0.32 ac. @ 2.64
Q = 0.84 c.f.s.

0.47 ac. @ 2.64
Q = 1.23 c.f.s.

1.67 ac. @ 2.64
Q = 4.56 c.f.s.

0.07 ac. @ 2.64
Q = 0.18 c.f.s.

0.14 ac. @ 3.85
Q = 0.54 c.f.s.

0.29 ac. @ 3.85
Q = 1.12 c.f.s.

HIGHWAY K

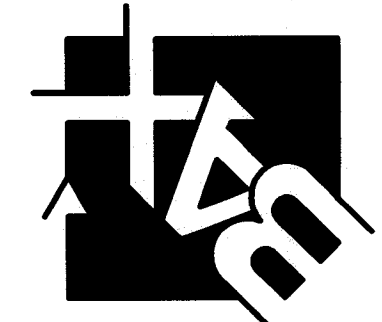
SUMMERSET DR.

O'FALLON ROAD

THIS SHEET FOR DRAINAGE AREA PURPOSES ONLY,
NOT FOR CONSTRUCTION!!!!

PROJECT TITLE:
THE LANDING OF OFALLON

ENGINEERING
BY
SURVEYING
221 Point West Blvd.
St. Charles, MO 63301
636-429-5552
FAX 636-429-1716



DISCLAIMER OF RESPONSIBILITY
I hereby specify that the documents intended to be
authentic and that my seal are limited to this sheet,
and I hereby disclaim any responsibility for all other
drawings, specifications, estimates, reports or other
documents or instruments relating to or intended to
be used for any part or parts of the architectural or
engineering project.



Copyright 2016
Box Engineering Company, Inc.
Engineering Authority No. 000655
Surveying Authority No. 000144
All Rights Reserved

REVISIONS

10-14-16	CITY COMMENTS
10-24-16	CITY COMMENTS

Developer / Owner:
LENITY ARCHITECTURE
3150 KETTLE COURT SE
SALEM, OREGON 97301
1-503-399-1090

PRE-DEVELOPED DRAINAGE AREA MAP

P+Z No. 20-16.02
City No. 16-010424

Page No. 7 of 31

Box Project # 06-3901B Issue Date: 08/29/2016