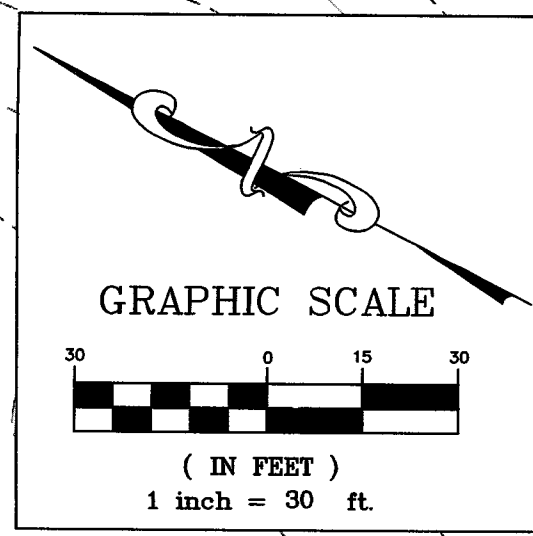
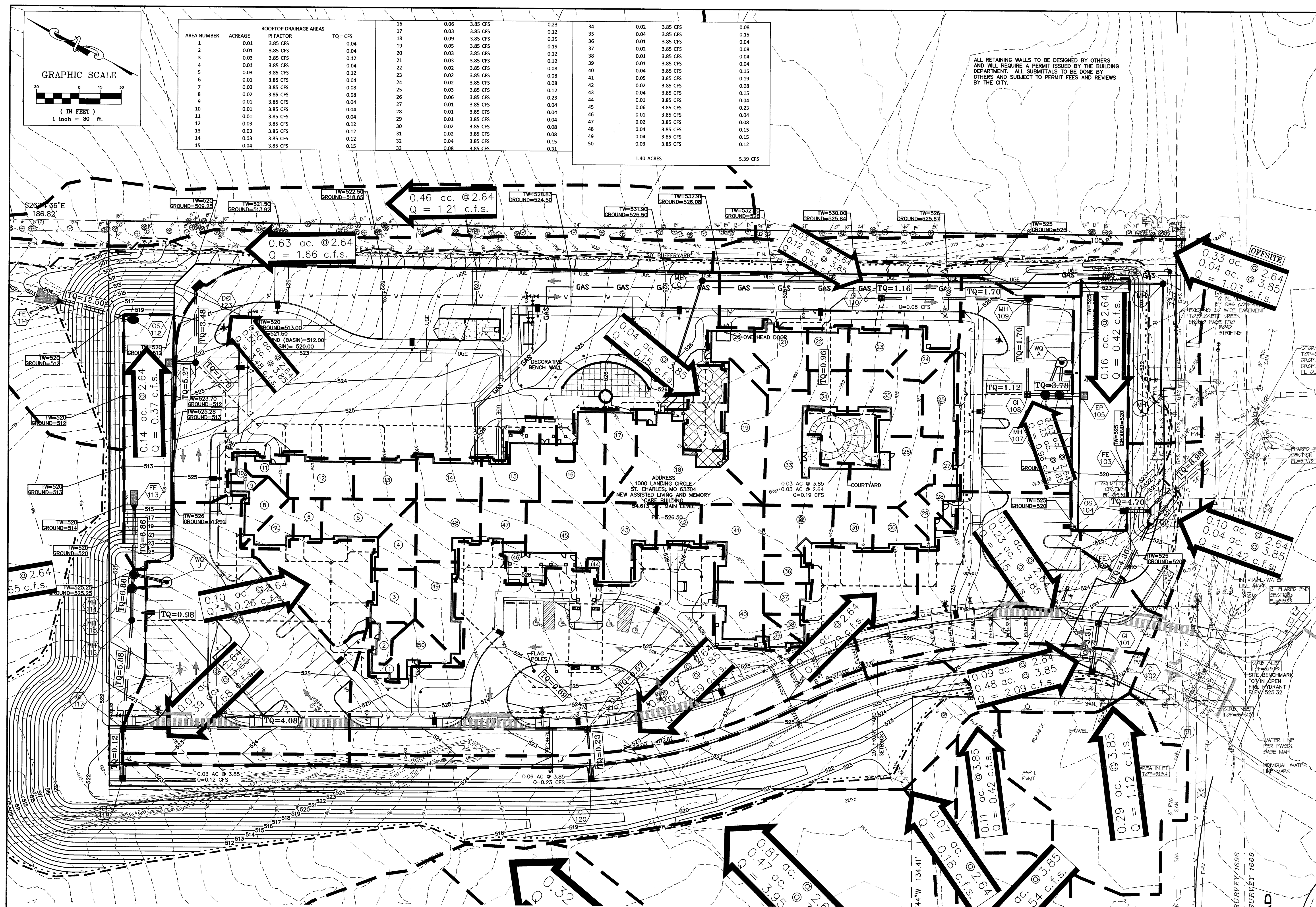


VAULTSERVER\Civil1\_3d Projects\13901B OFALLON SENIOR LIVING\Construction\13901B Con.dwg, 11/2/2016 1:59:02 PM, 1:1



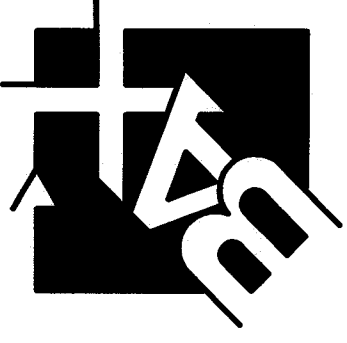
AREA NUMBER	ACREAGE	ROOFTOP DRAINAGE AREAS	TQ = CFS
1	0.01	3.85 CFS	0.04
2	0.01	3.85 CFS	0.04
3	0.03	3.85 CFS	0.12
4	0.01	3.85 CFS	0.04
5	0.03	3.85 CFS	0.12
6	0.01	3.85 CFS	0.04
7	0.02	3.85 CFS	0.08
8	0.01	3.85 CFS	0.04
9	0.01	3.85 CFS	0.04
10	0.01	3.85 CFS	0.04
11	0.01	3.85 CFS	0.04
12	0.03	3.85 CFS	0.12
13	0.03	3.85 CFS	0.12
14	0.03	3.85 CFS	0.12
15	0.04	3.85 CFS	0.15
16	0.06	3.85 CFS	0.23
17	0.03	3.85 CFS	0.12
18	0.09	3.85 CFS	0.35
19	0.05	3.85 CFS	0.19
20	0.03	3.85 CFS	0.12
21	0.03	3.85 CFS	0.12
22	0.02	3.85 CFS	0.08
23	0.02	3.85 CFS	0.08
24	0.02	3.85 CFS	0.08
25	0.03	3.85 CFS	0.12
26	0.06	3.85 CFS	0.23
27	0.01	3.85 CFS	0.04
28	0.01	3.85 CFS	0.04
29	0.01	3.85 CFS	0.04
30	0.02	3.85 CFS	0.08
31	0.02	3.85 CFS	0.08
32	0.04	3.85 CFS	0.15
33	0.08	3.85 CFS	0.31
34	0.02	3.85 CFS	0.08
35	0.04	3.85 CFS	0.15
36	0.01	3.85 CFS	0.04
37	0.02	3.85 CFS	0.08
38	0.01	3.85 CFS	0.04
39	0.01	3.85 CFS	0.04
40	0.04	3.85 CFS	0.15
41	0.05	3.85 CFS	0.19
42	0.02	3.85 CFS	0.08
43	0.04	3.85 CFS	0.15
44	0.01	3.85 CFS	0.04
45	0.06	3.85 CFS	0.23
46	0.01	3.85 CFS	0.04
47	0.02	3.85 CFS	0.08
48	0.04	3.85 CFS	0.15
49	0.04	3.85 CFS	0.15
50	0.03	3.85 CFS	0.12
1.40 ACRES			5.39 CFS

ALL RETAINING WALLS TO BE DESIGNED BY OTHERS AND WILL REQUIRE A PERMIT ISSUED BY THE BUILDING DEPARTMENT. ALL SUBMITTALS TO BE DONE BY OTHERS AND SUBJECT TO PERMIT FEES AND REVIEWS BY THE CITY.

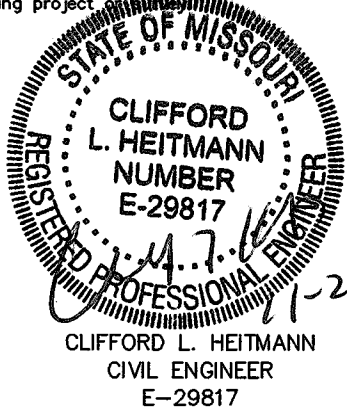


PROJECT TITLE:  
THE LANDING OF OFALLON

ENGINEERING  
PLANNING  
SURVEYING  
221 Point West Blvd.  
St. Charles, MO 63301  
636-428-6562  
FAX 636-428-1716



DISCLAIMER OF RESPONSIBILITY  
I hereby specify that the documents intended to be authorized by my seal are limited to this sheet, and I hereby disclaim any responsibility for all other drawings, Specifications, Estimates, Reports or other documents or instruments relating to or intended to be used for any part or parts of the architectural or engineering project.



Copyright 2016  
Bas Engineering Company, Inc.  
Engineering Authority No. 000655  
Surveying Authority No. 000144  
All Rights Reserved

REVISIONS

10-14-16	CITY COMMENTS
10-24-16	CITY COMMENTS

Developer / Owner:  
LENITY ARCHITECTURE  
3150 KETTLE COURT SE  
SALEM, OREGON 97301  
1-503-399-1090

POST-DEVELOPED DRAINAGE AREA MAP

P+Z No. 20-16.02  
City No. 16-010424

Page No. 8 of 31

THIS SHEET FOR DRAINAGE AREA PURPOSES ONLY,  
NOT FOR CONSTRUCTION!!!!

Bas Project # 06-13901B Issue Date: 09/26/2016