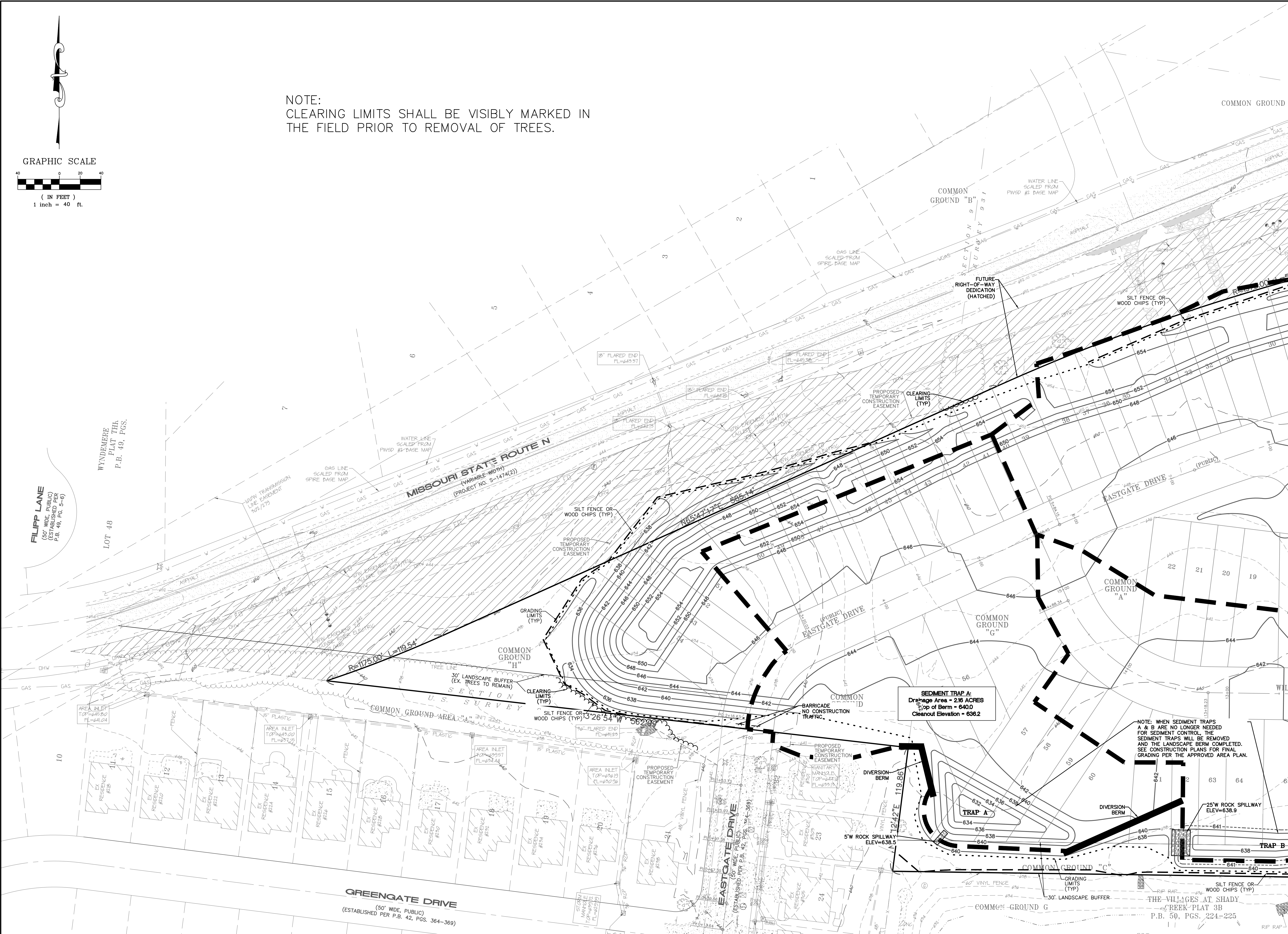


NOTE:
CLEARING LIMITS SHALL BE VISIBLY MARKED IN
THE FIELD PRIOR TO REMOVAL OF TREES.



SEDIMENT TRAP A:
Drainage Area = 2.16 ACRES
Top of Berm = 640.0
Cleanout Elevation = 636.2

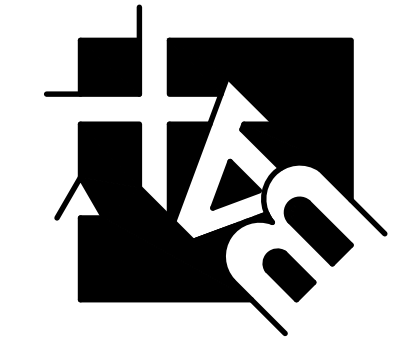
NOTE: WHEN SEDIMENT TRAPS
A & B ARE NO LONGER NEEDED
FOR SEDIMENT CONTROL, THE
SEDIMENT TRAPS WILL BE REMOVED
AND THE LANDSCAPE BERM COMPLETED.
SEE CONSTRUCTION PLANS FOR FINAL
GRADING PER THE APPROVED AREA PLAN.

PROJECT TITLE:

The Willows

Box Project # 20-89154 Issue Date: 01/28/2022

ENGINEERING
PLANNING
SURVEYING
221 Point View Blvd.
St. Charles, MO 63301
636-928-5562
FAX 636-928-1718



DISCLAIMER OF RESPONSIBILITY
I hereby specify that the documents intended to be
substantiated by my seal are limited to this sheet,
and I hereby disclaim any responsibility for all other
drawings, specifications, estimates, reports or other
documents or instruments relating to or intended to
be used for any part or parts of the architectural or
engineering project or projects.



JEFFREY B. SIMMONS
CIVIL ENGINEER
2007030831
Copyright 2022
Box Engineering Company, Inc.
Authority No. 000655
All Rights Reserved

REVISIONS

DATE	DESCRIPTION
03/02/22	CITY COMMENTS
03/30/22	CITY COMMENTS
04/18/22	CITY COMMENTS
07/01/22	CITY COMMENTS

Developer / Owner:
KAPB, L.L.C.
410 Crestview Drive
O'Fallon, MO 63366
636-272-4200

STORMWATER POLLUTION PREVENTION PLAN

P-Z No. #21-08053
Approval Date: 03/24/2022
City No. GR22-000004

Page No.
8 of 12