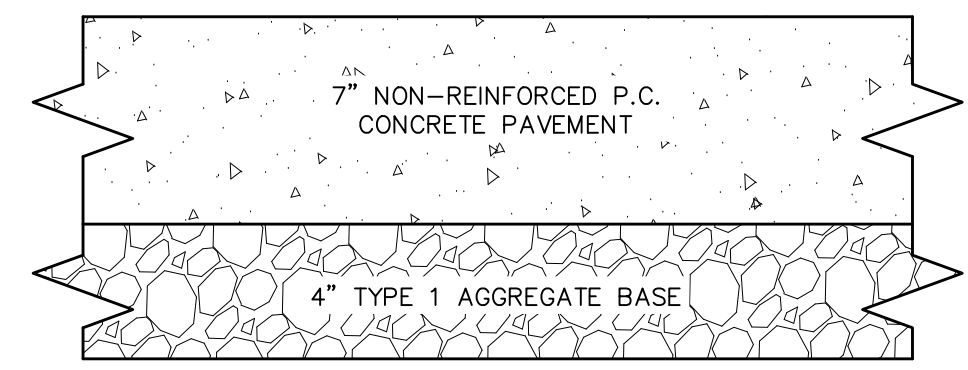


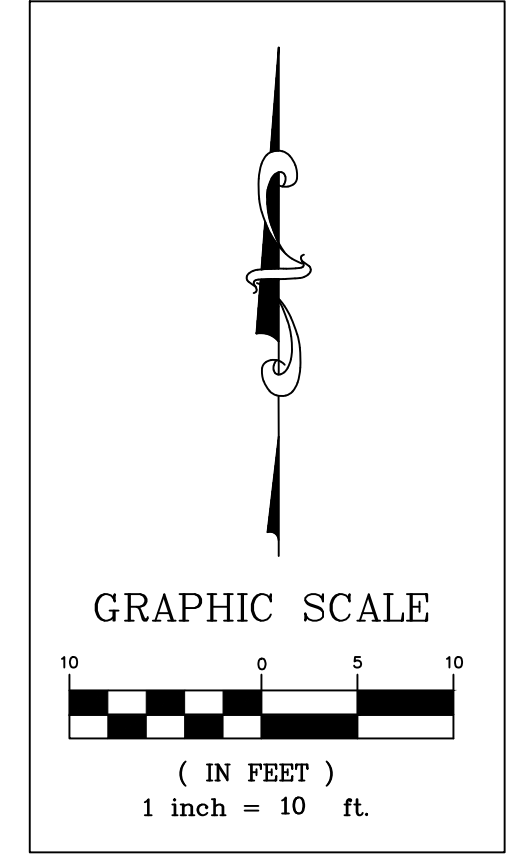
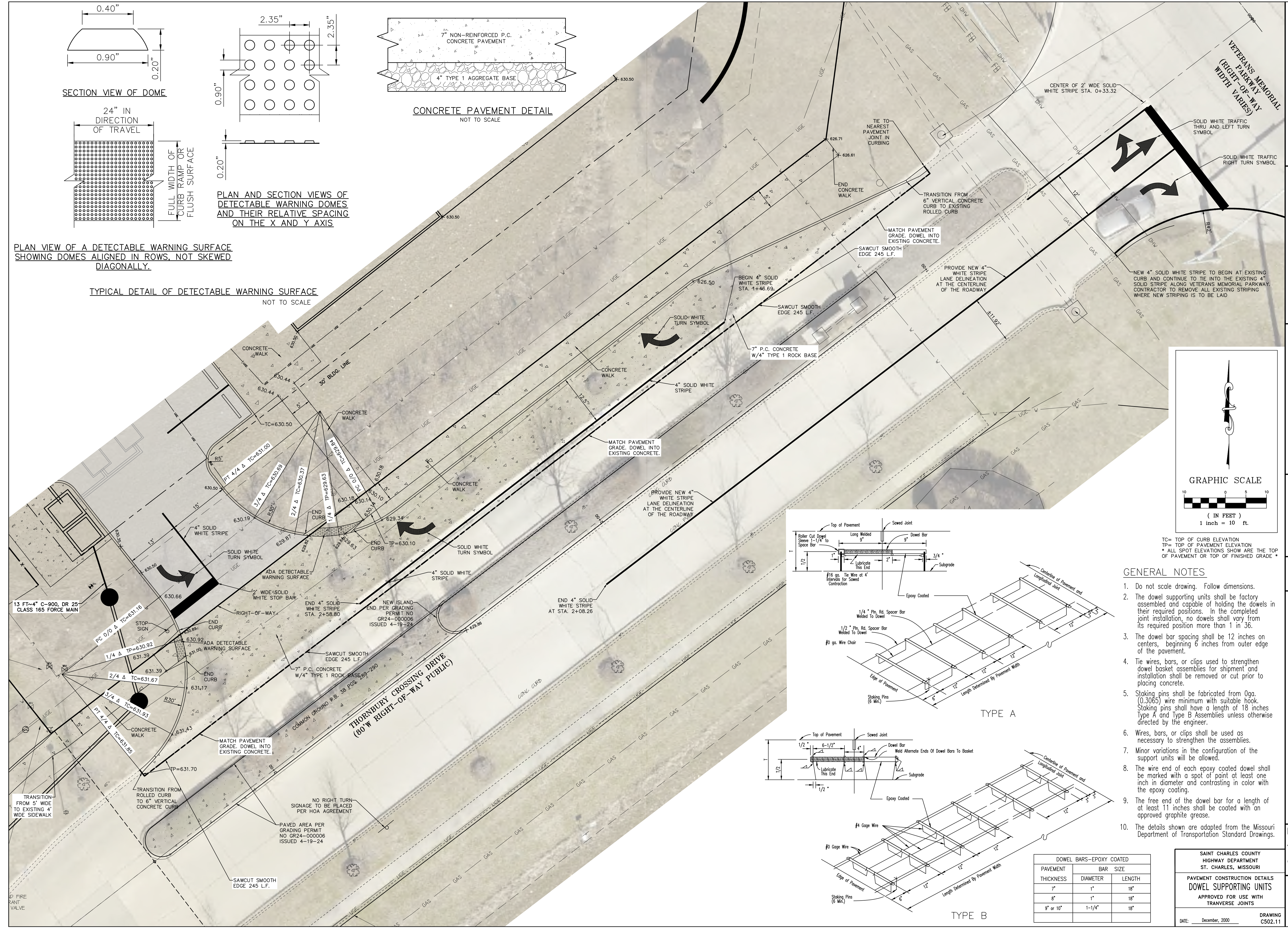
PLAN AND SECTION VIEWS OF DETECTABLE WARNING DOMES AND THEIR RELATIVE SPACING ON THE X AND Y AXIS



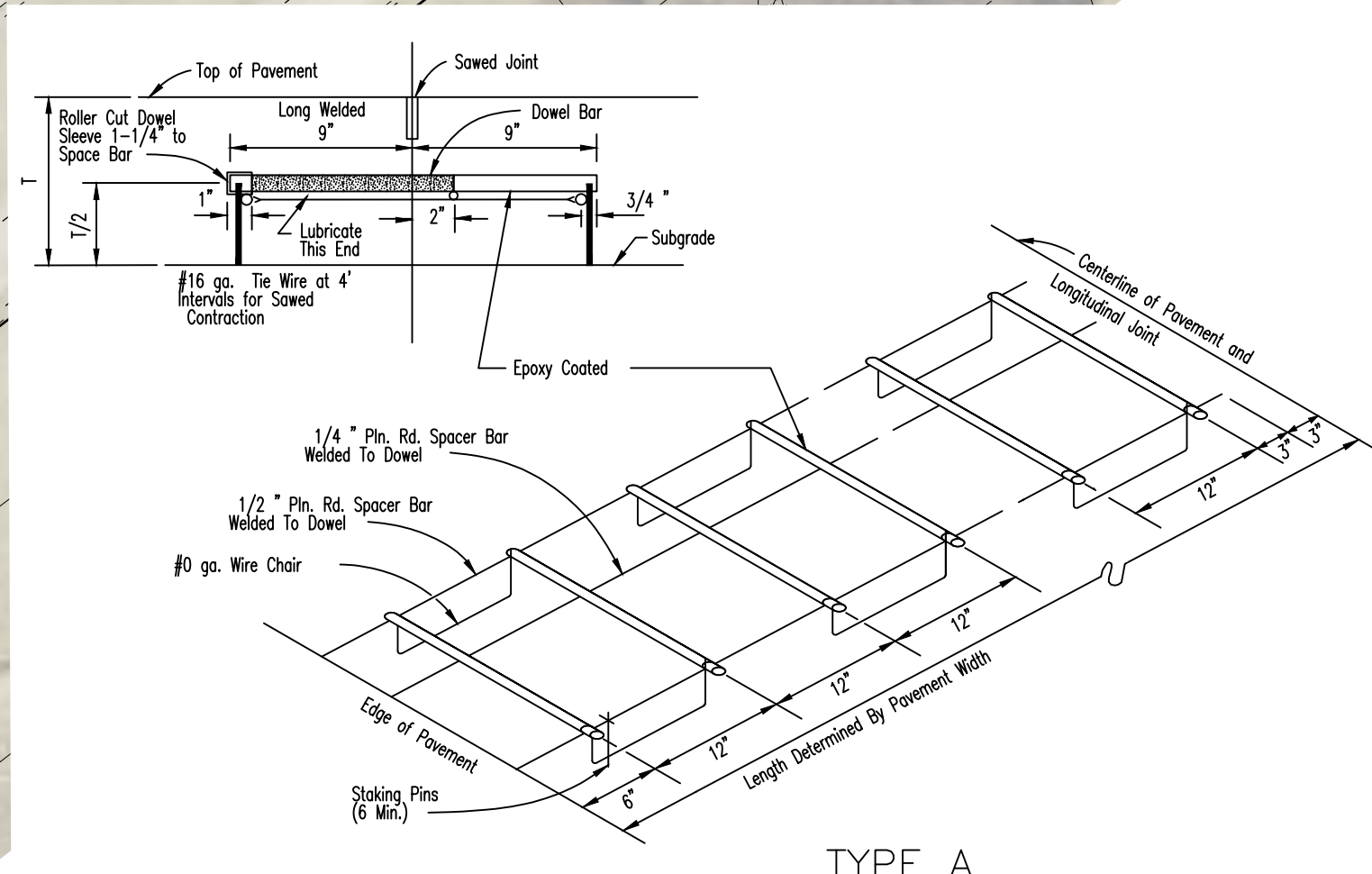
CONCRETE PAVEMENT DETAIL NOT TO SCALE

PLAN VIEW OF A DETECTABLE WARNING SURFACE SHOWING DOMES ALIGNED IN ROWS, NOT SKEWED DIAGONALLY.

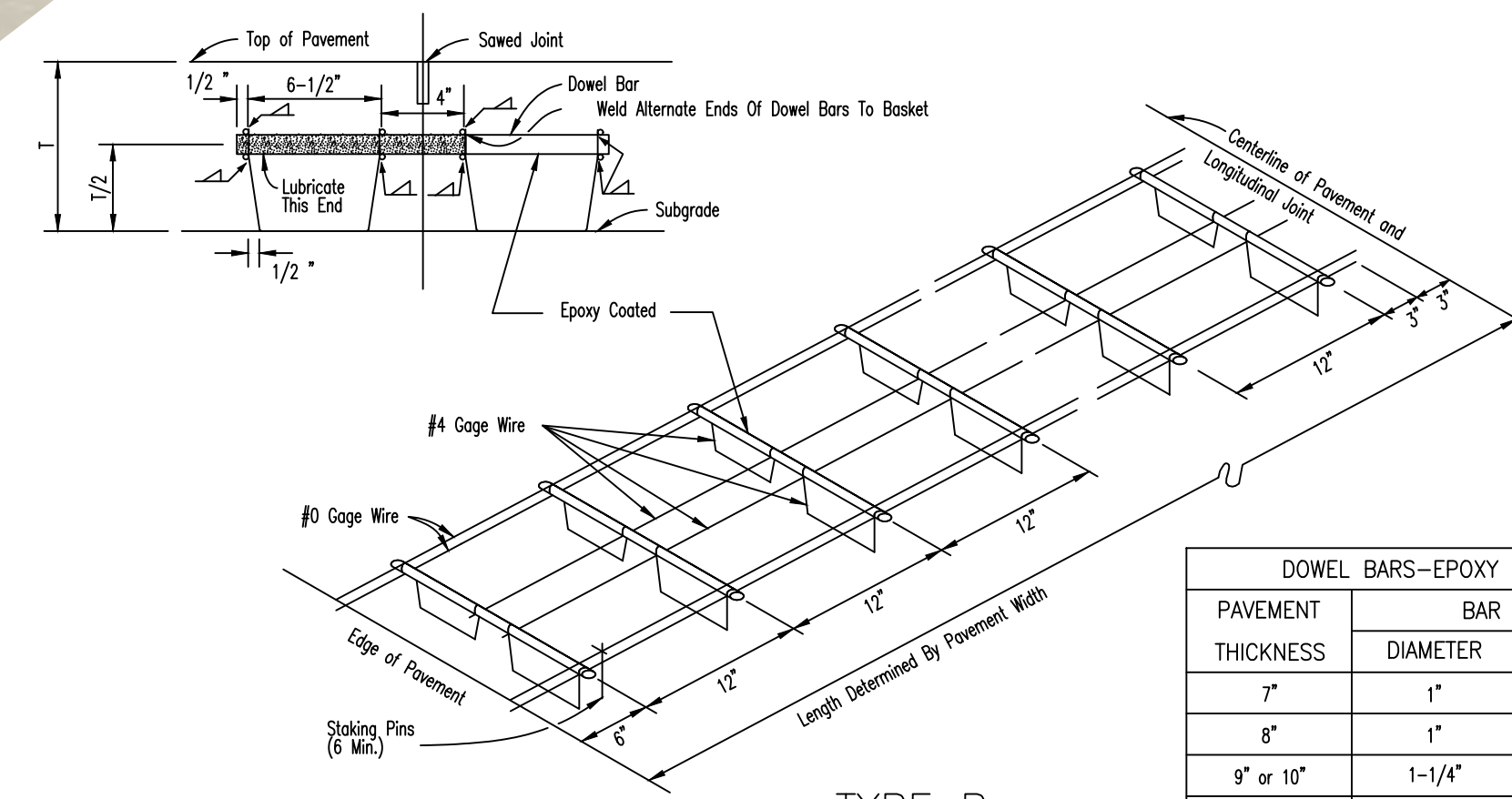
TYPICAL DETAIL OF DETECTABLE WARNING SURFACE NOT TO SCALE



TC= TOP OF CURB ELEVATION  
 TP= TOP OF PAVEMENT ELEVATION  
 \* ALL SPOT ELEVATIONS SHOW ARE THE TOP OF PAVEMENT OR TOP OF FINISHED GRADE \*



TYPE A



TYPE B

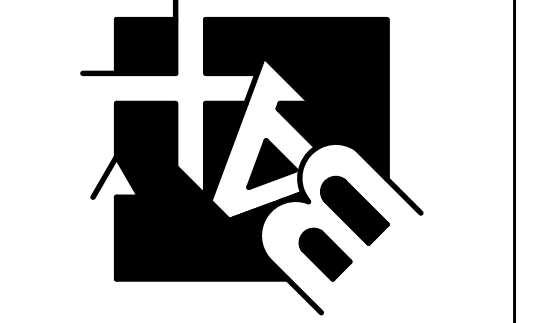
DOWEL BARS-EPOXY COATED		
PAVEMENT THICKNESS	BAR DIAMETER	BAR LENGTH
7"	1"	18"
8"	1"	18"
9" or 10"	1-1/4"	18"

GENERAL NOTES

- Do not scale drawing. Follow dimensions.
- The dowel supporting units shall be factory assembled and capable of holding the dowels in their required positions. In the completed joint installation, no dowels shall vary from its required position more than 1 in 36.
- The dowel bar spacing shall be 12 inches on centers, beginning 6 inches from outer edge of the pavement.
- Tie wires, bars, or clips used to strengthen dowel basket assemblies for shipment and installation shall be removed or cut prior to placing concrete.
- Staking pins shall be fabricated from 0ga. (0.3065) wire minimum with suitable hook. Staking pins shall have a length of 18 inches Type A and Type B Assemblies unless otherwise directed by the engineer.
- Wires, bars, or clips shall be used as necessary to strengthen the assemblies.
- Minor variations in the configuration of the support units will be allowed.
- The wire end of each epoxy coated dowel shall be marked with a spot of paint at least one inch in diameter and contrasting in color with the epoxy coating.
- The free end of the dowel bar for a length of at least 11 inches shall be coated with an approved graphite grease.
- The details shown are adapted from the Missouri Department of Transportation Standard Drawings.

**PROJECT TITLE:**  
 THORNWOOD APARTMENTS  
 THORNBURY CROSSING DRIVE  
 OFALLON, MO 63366

**ENGINEERING**  
 PLANNING  
 SURVEYING  
 221 Point West Blvd.  
 St. Charles, MO 63301  
 636-928-5552  
 FAX 928-1718



DISCLAIMER OF RESPONSIBILITY  
 I hereby certify that the documents intended to be authenticated by my seal are limited to this sheet, and I hereby disclaim any responsibility for all other drawings, specifications, estimates, reports or other documents or instruments relating to or intended to be used for any part or parts of the architectural or engineering project or survey.



REVISIONS

NO.	DATE	REVISION
07-25-24		CITY COMMENTS
08-15-24		CITY COMMENTS

Bax Engineering Company, Inc.  
 Missouri State Certificate of Authority  
 Engineering #000655  
 Missouri State Certificate of Authority  
 Surveying #000144

**Developer / Owner:**  
 MRS TROMBONE LLC  
 100 WOODCHASE LANE  
 CHESTERFIELD, MO 6307  
 314-469-0029

**P-Z No.** 23-010426  
**Approval Date:** 1-4-24  
**City No.** #  
**Page No.** 24 of 34  
**DRAWING** C502.11  
 DATE: December, 2000

**ENTRANCE AND WIDENING PLAN**

I:\VAULT\SERVER\Civil\3d Projects\19014\Construction\19014\Constsheets.dwg, ARCH full bleed D (24.00 x 36.00 inches), 1:1