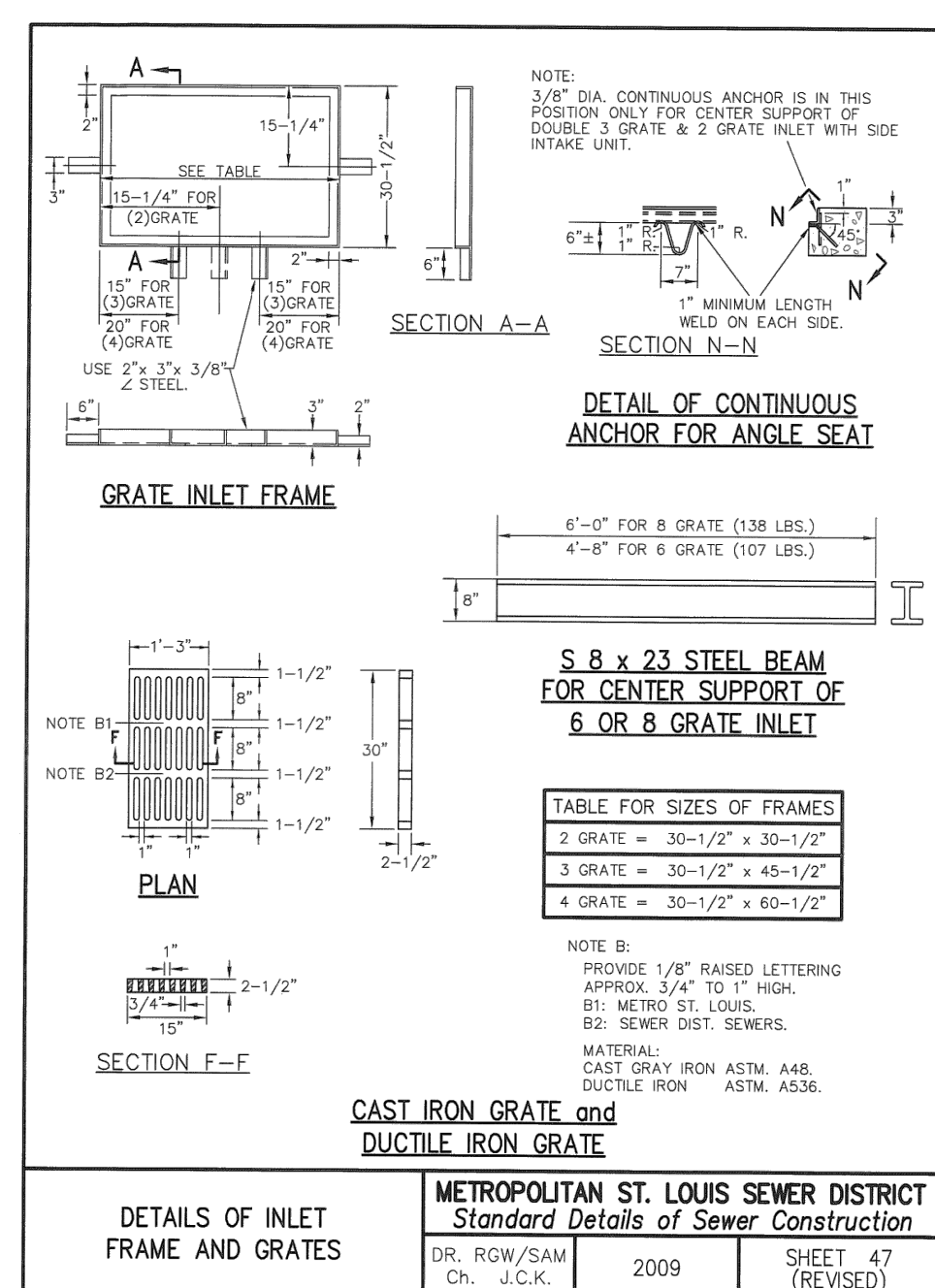
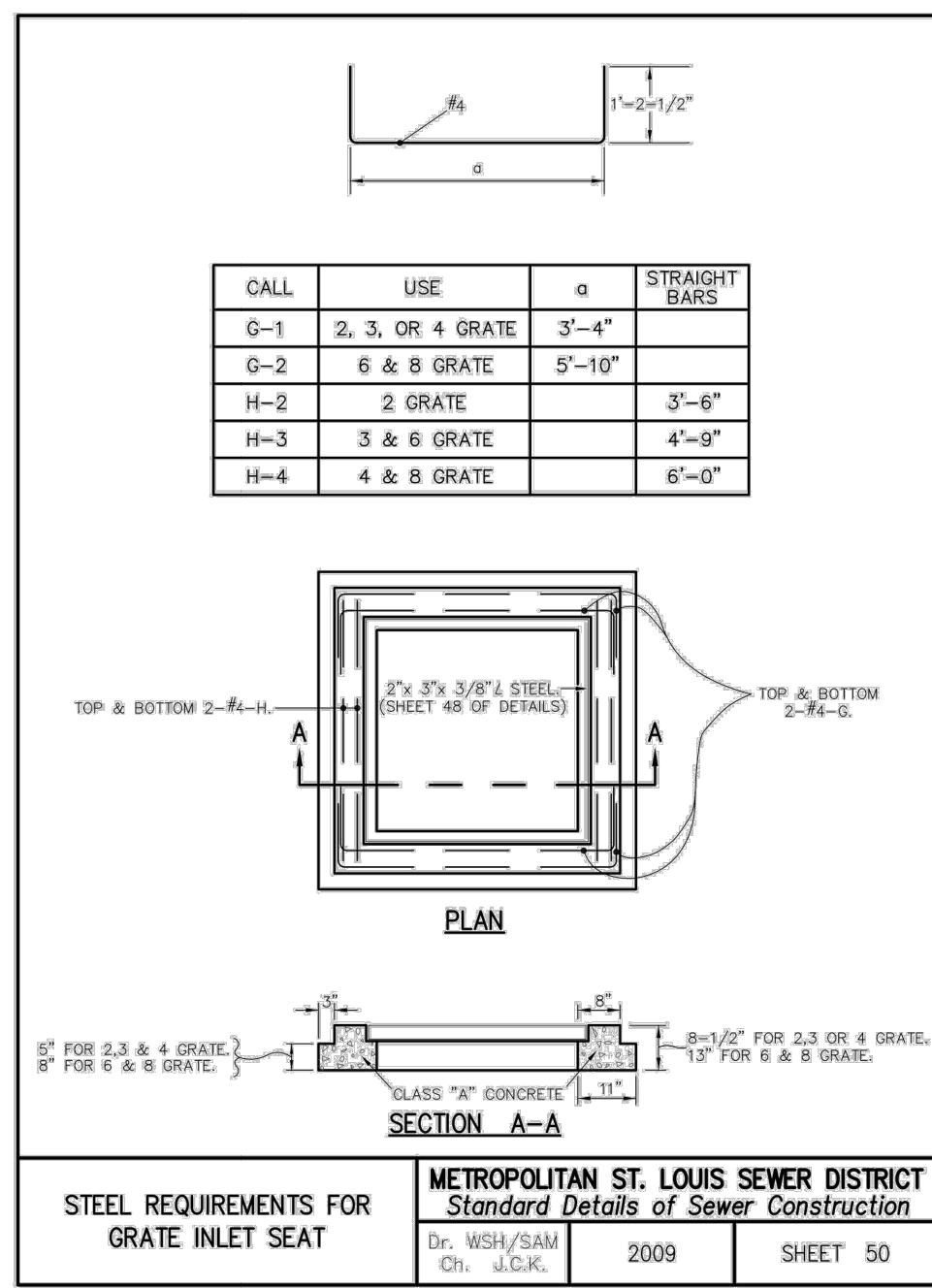


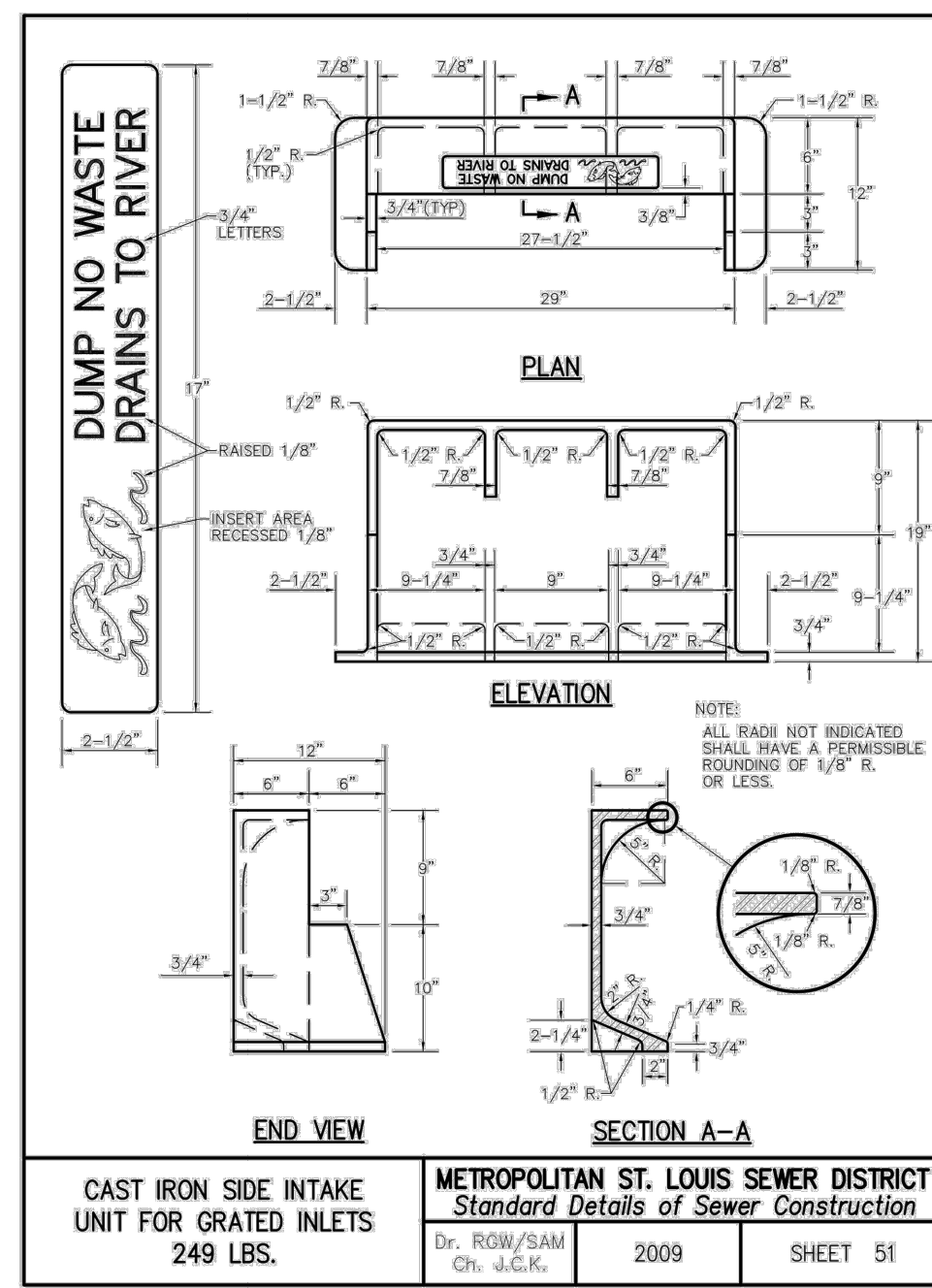
PRECAST CONCRETE UNIT FOR 4 WAY AREA INLET	METROPOLITAN ST. LOUIS SEWER DISTRICT Standard Details of Sewer Construction
Dr. DMS/SAM Ch. J.C.K.	2009 SHEET 40



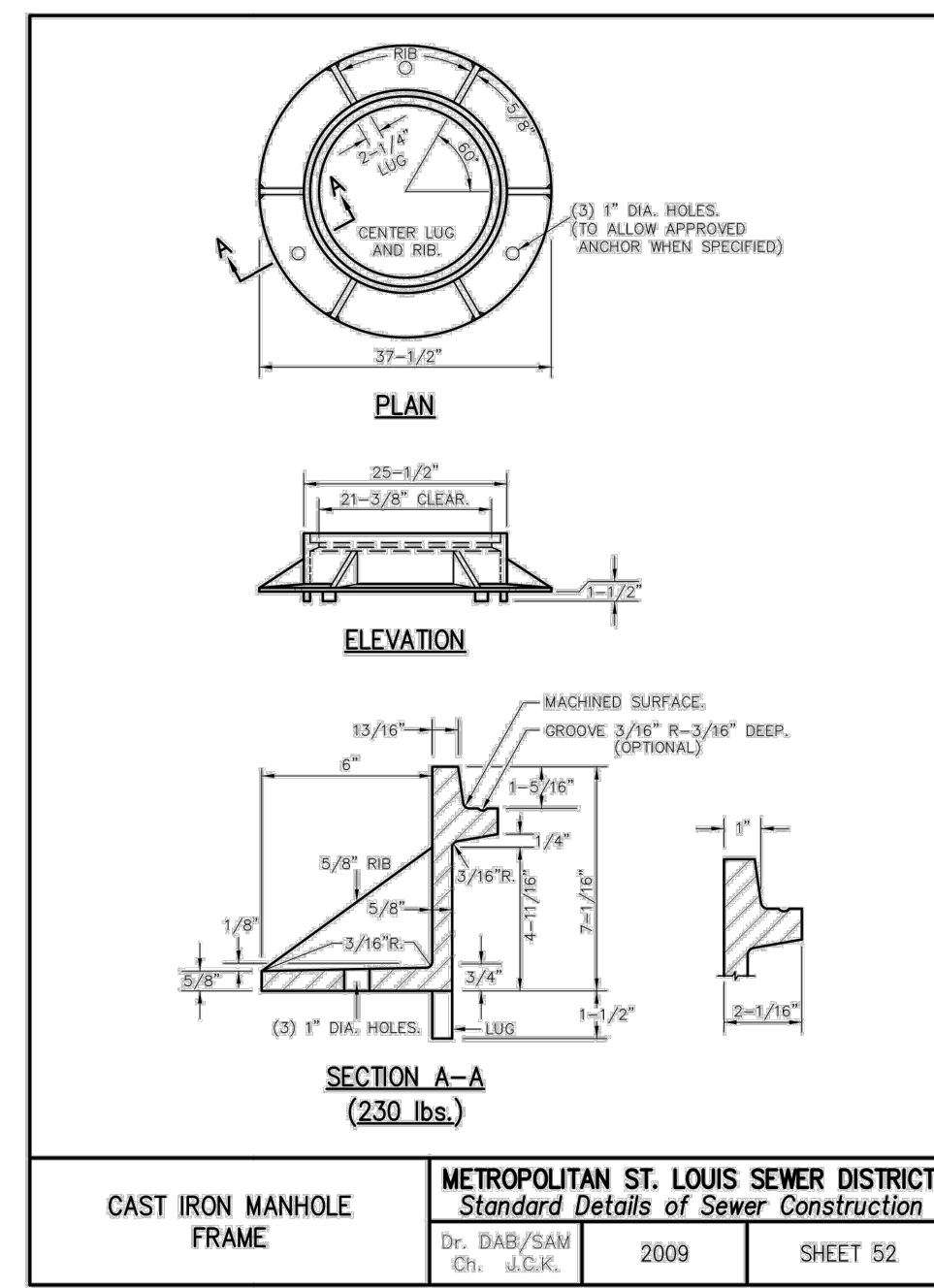
DETAILS OF INLET FRAME AND GRATES	METROPOLITAN ST. LOUIS SEWER DISTRICT Standard Details of Sewer Construction
Dr. ROW/SAM Ch. J.C.K.	2009 SHEET 47 (REVISED)



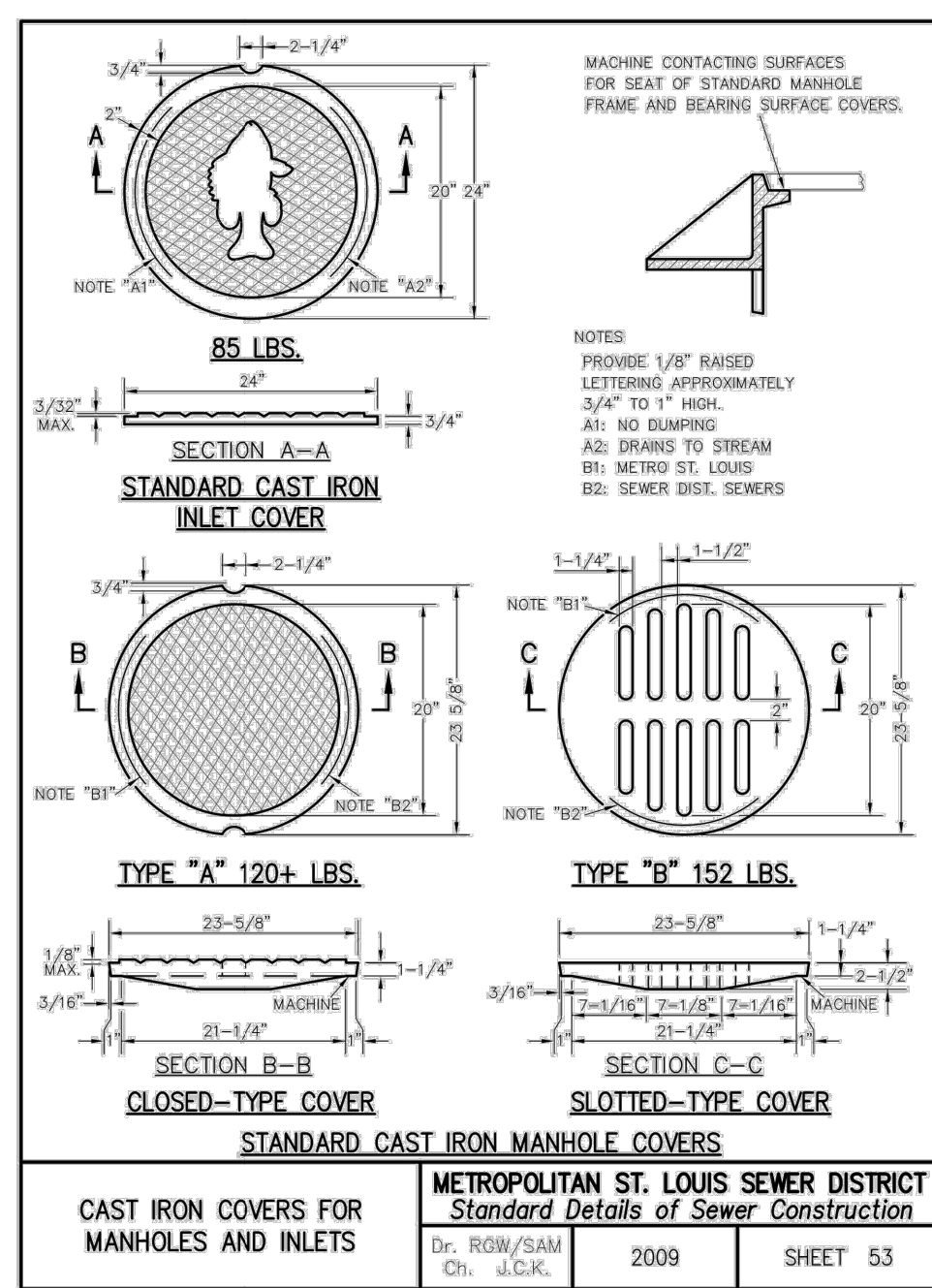
STEEL REQUIREMENTS FOR GRATE INLET SEAT	METROPOLITAN ST. LOUIS SEWER DISTRICT Standard Details of Sewer Construction
Dr. WSH/SAM Ch. J.C.K.	2009 SHEET 50



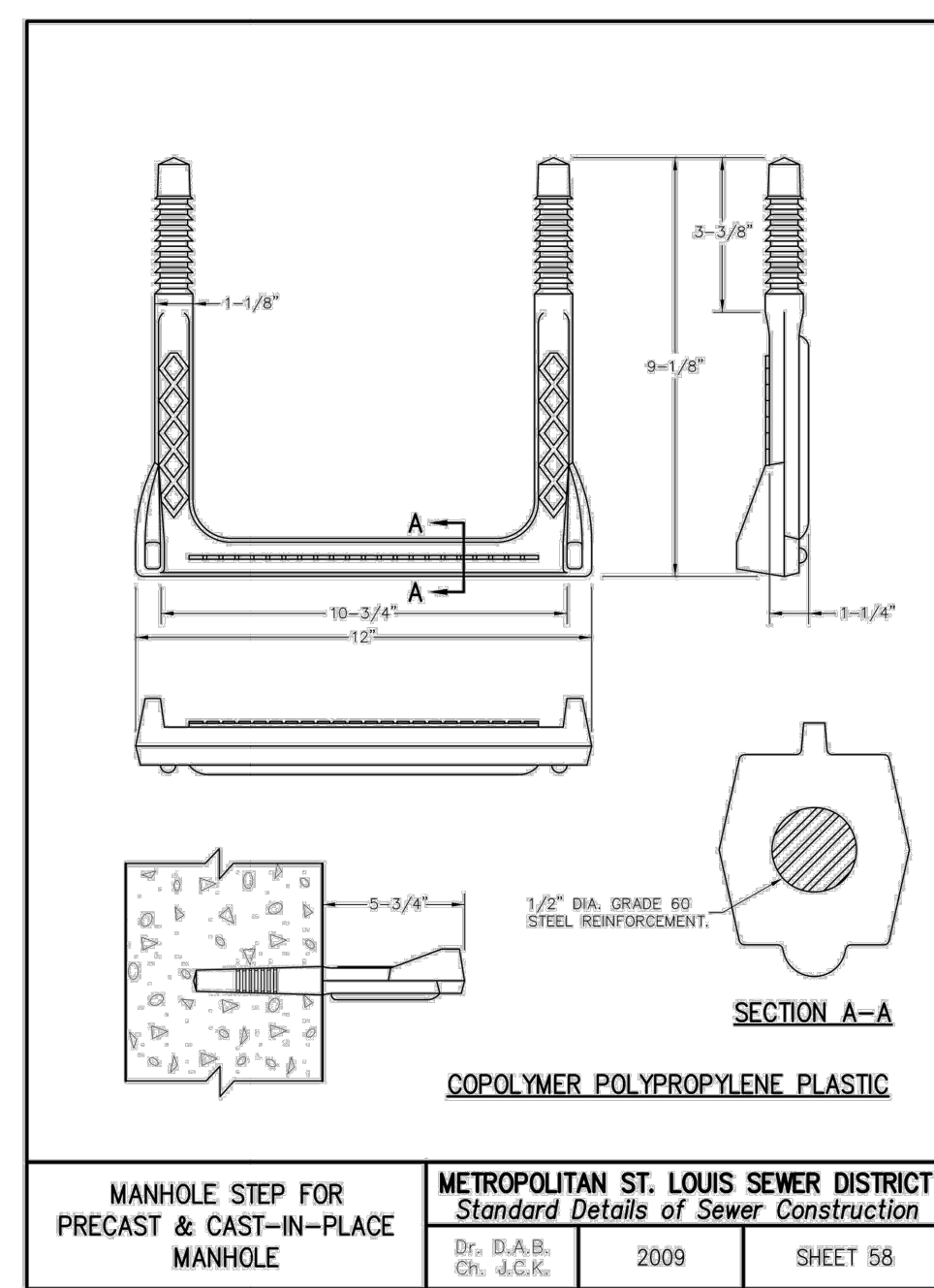
CAST IRON SIDE INTAKE UNIT FOR GRATED INLETS 249 LBS.	METROPOLITAN ST. LOUIS SEWER DISTRICT Standard Details of Sewer Construction
Dr. ROW/SAM Ch. J.C.K.	2009 SHEET 51



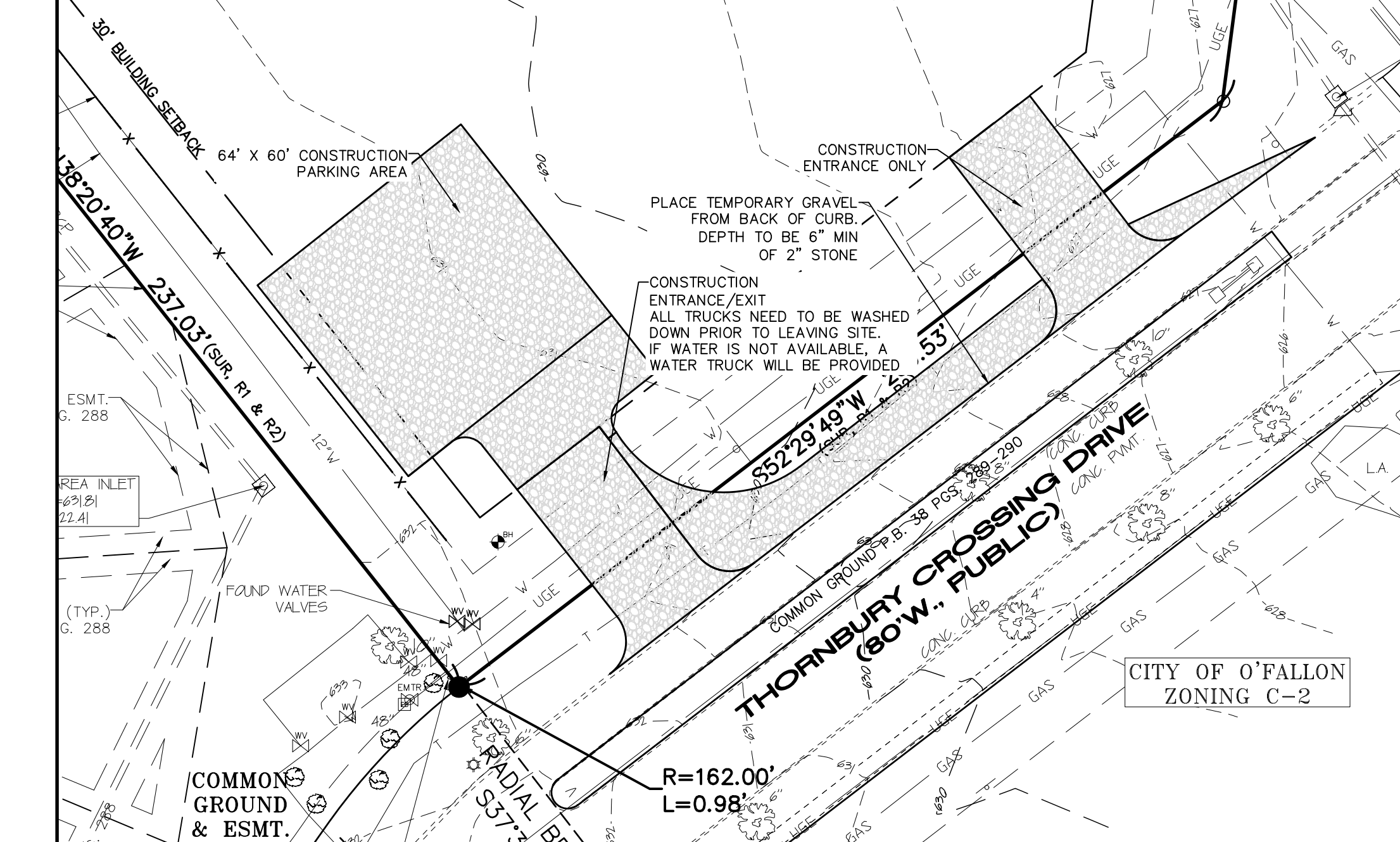
CAST IRON MANHOLE FRAME (230 lbs.)	METROPOLITAN ST. LOUIS SEWER DISTRICT Standard Details of Sewer Construction
Dr. DMS/SAM Ch. J.C.K.	2009 SHEET 52



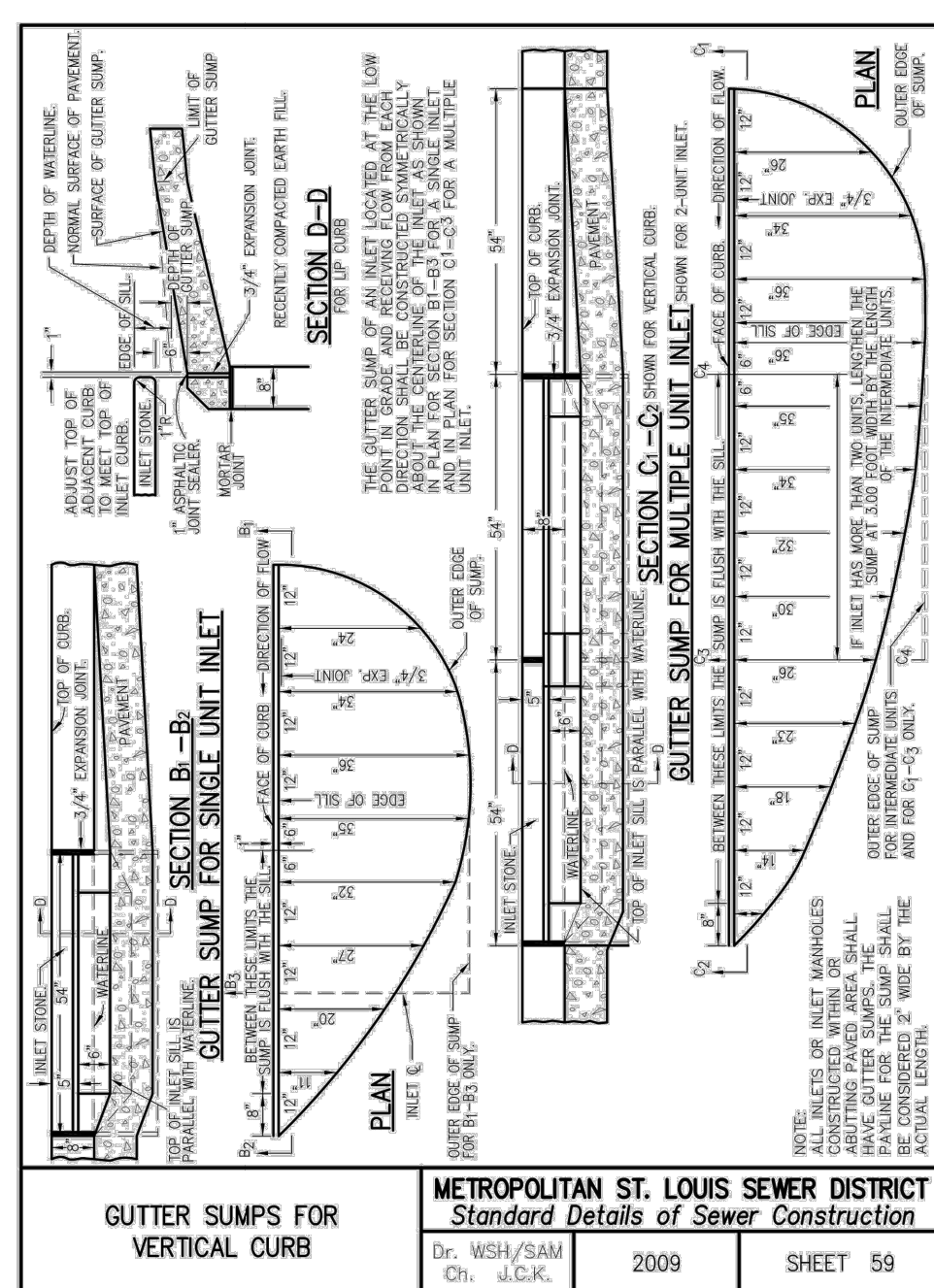
CAST IRON COVERS FOR MANHOLES AND INLETS	METROPOLITAN ST. LOUIS SEWER DISTRICT Standard Details of Sewer Construction
Dr. ROW/SAM Ch. J.C.K.	2009 SHEET 53



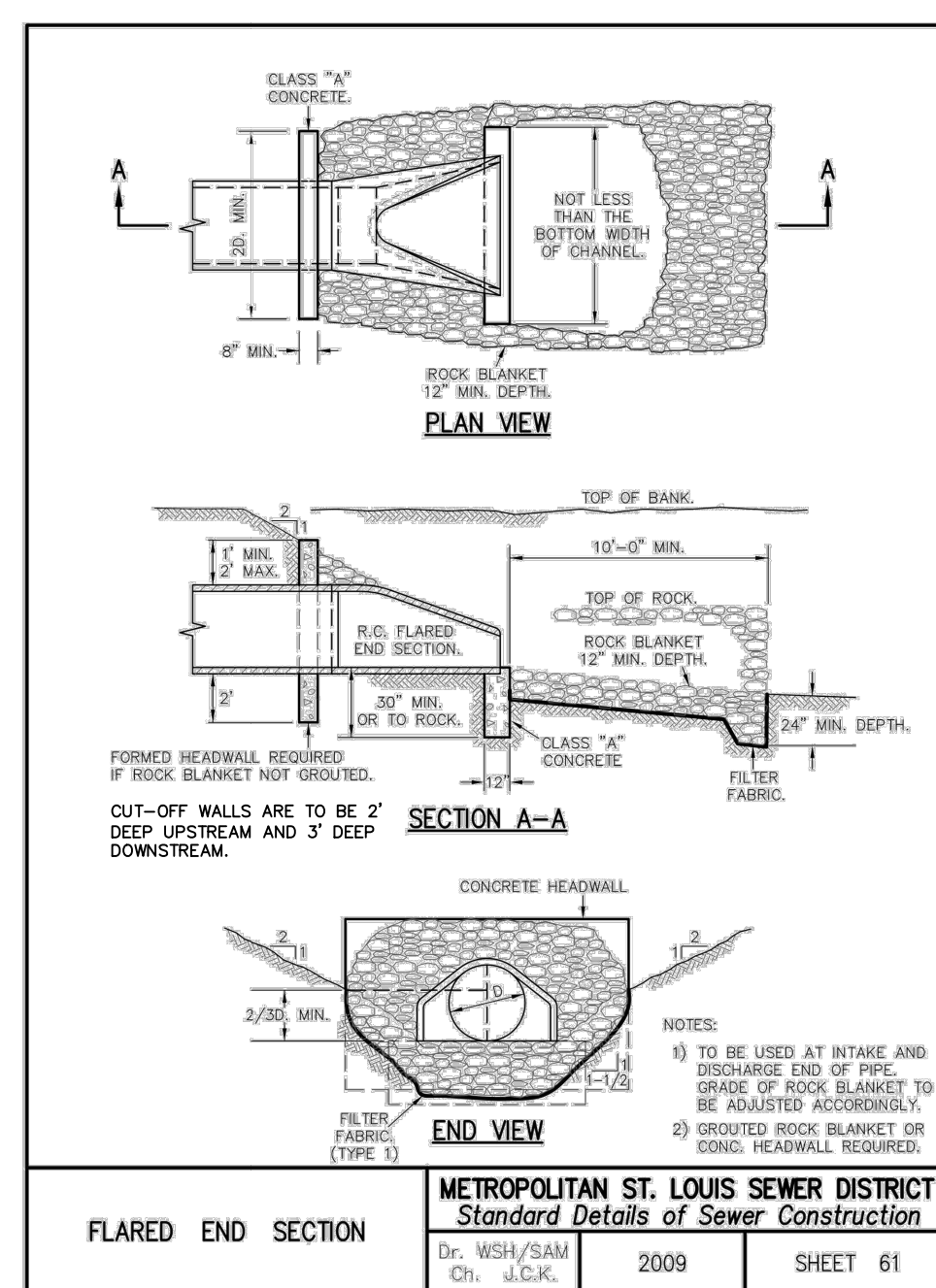
MANHOLE STEP FOR PRECAST & CAST-IN-PLACE MANHOLE	METROPOLITAN ST. LOUIS SEWER DISTRICT Standard Details of Sewer Construction
Dr. ROW/SAM Ch. J.C.K.	2009 SHEET 58



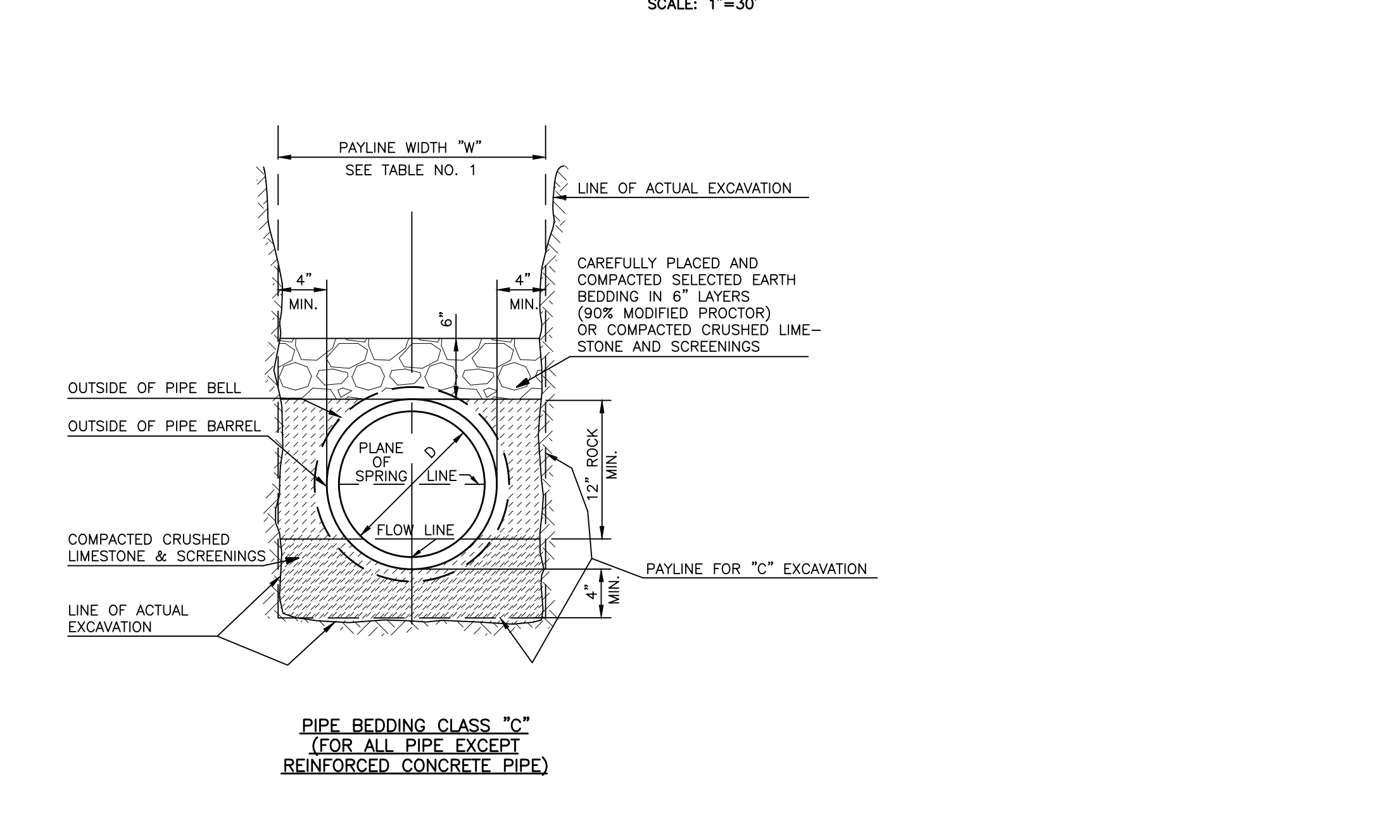
CONSTRUCTION ENTRANCE DETAIL
SCALE: 1"=30'



GUTTER SUMPS FOR VERTICAL CURB	METROPOLITAN ST. LOUIS SEWER DISTRICT Standard Details of Sewer Construction
Dr. WSH/SAM Ch. J.C.K.	2009 SHEET 59



FLARED END SECTION	METROPOLITAN ST. LOUIS SEWER DISTRICT Standard Details of Sewer Construction
Dr. WSH/SAM Ch. J.C.K.	2009 SHEET 61



PIPE BEDDING CLASS "C" (FOR ALL PIPE EXCEPT REINFORCED CONCRETE PIPE)	METROPOLITAN ST. LOUIS SEWER DISTRICT Standard Details of Sewer Construction
Dr. ROW/SAM Ch. J.C.K.	2009 SHEET 61

PROJECT TITLE:
THORNWOOD APARTMENTS
THORNBUARY CROSSING DRIVE
O'FALLON, MO 63366

ENGINEERING PLANNING SURVEYING
 221 Point West Blvd.
 St. Charles, MO 63301
 636-928-5552
 FAX 636-928-1718

DISCLAIMER OF RESPONSIBILITY
 I hereby certify that the documents intended to be authenticated by my seal are limited to this sheet, and I hereby disclaim any responsibility for all other drawings, specifications, estimates, reports or other documents or instruments relating to or intended to be used for any part or parts of the architectural or engineering project or survey.

REFERENCE DETAIL SHEET ONLY

CLIFFORD L. HEITMANN
 Civil Engineer
 Engineers License E-29817

REVISIONS

07-25-24	CITY COMMENTS
08-15-24	CITY COMMENTS

Bax Engineering Company, Inc.
 Missouri State Certificate of Authority
 Engineering #000655
 Missouri State Certificate of Authority
 Surveying #000144

Developer / Owner:
MRS TROMBONE LLC
1100 WOODCHASE LANE
CHESTERFIELD, MO 6307
314-469-0029

DETAILS

P+Z No. 23-010426
Approval Date: 1-4-24
City No. #
Page No. 23 of 34