

PROJECT TITLE:
THORNWOOD APARTMENTS
THORNBUARY CROSSING DRIVE
O'FALLON, MO 63366

ENGINEERING
PLANNING
SURVEYING

221 Point West Blvd.
 St. Charles, MO 63301
 636-928-5552
 FAX 636-928-1718

CLIFFORD L. HEITMANN
 REGISTERED PROFESSIONAL ENGINEER
 MISSOURI STATE CERTIFICATE OF AUTHORITY
 NUMBER E-29817

CLIFFORD L. HEITMANN
 Civil Engineer
 Engineers License E-29817

REVISIONS

NO.	DATE	DESCRIPTION
07-25-24		CITY COMMENTS
08-15-24		CITY COMMENTS

Bax Engineering Company, Inc.
 Missouri State Certificate of Authority
 Engineering #000655
 Missouri State Certificate of Authority
 Surveying #000144

StormRax
 BY PLASTIC SOLUTIONS

FLAT SERIES
TOP MOUNT OVERVIEW
 (Box Structures)

2 GRID HIGH (STANDARD)

FOR TOP MOUNTING ON STRUCTURES
 GREATER THAN 4' X 4' I.D., SEE DOME SERIES

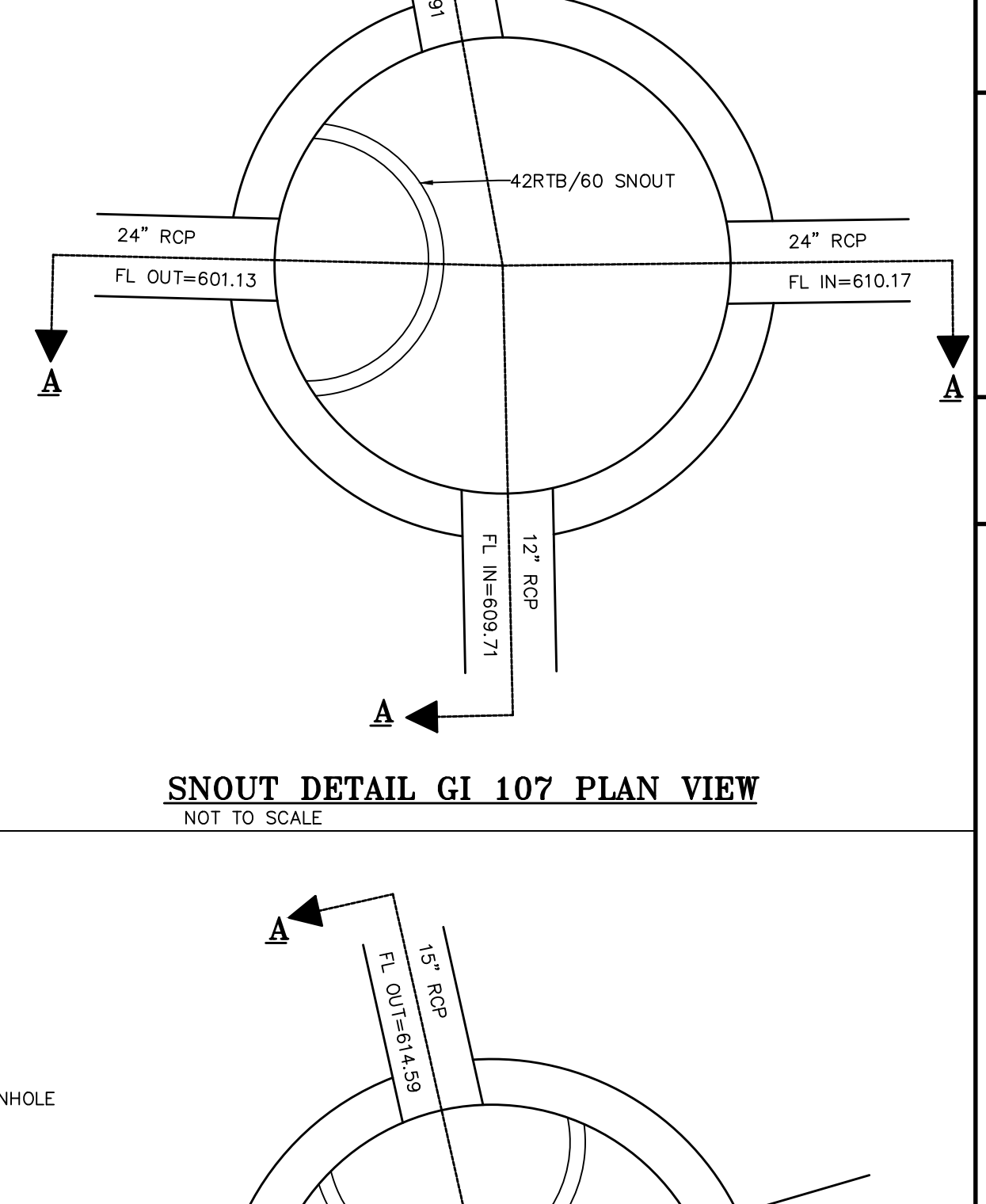
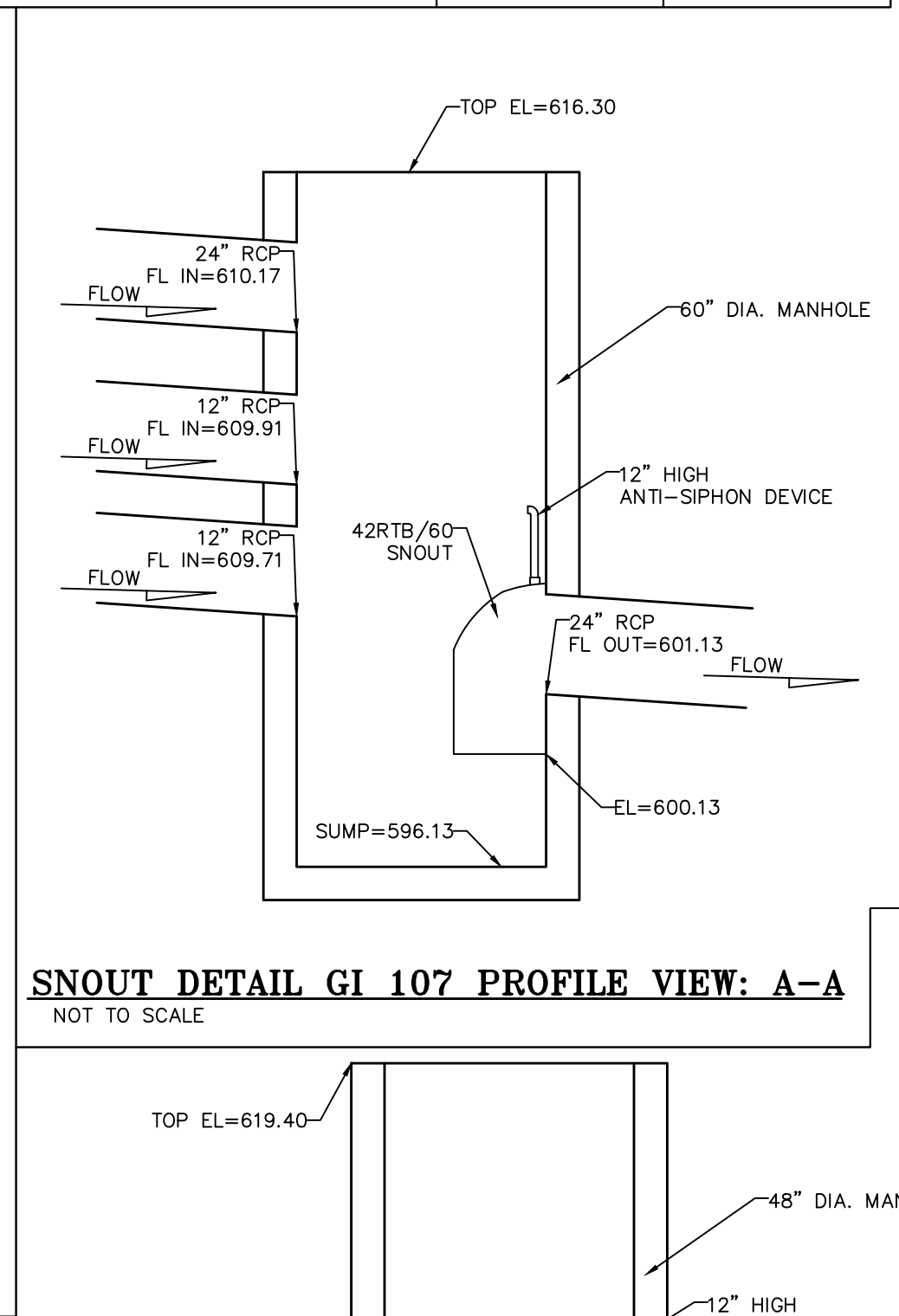
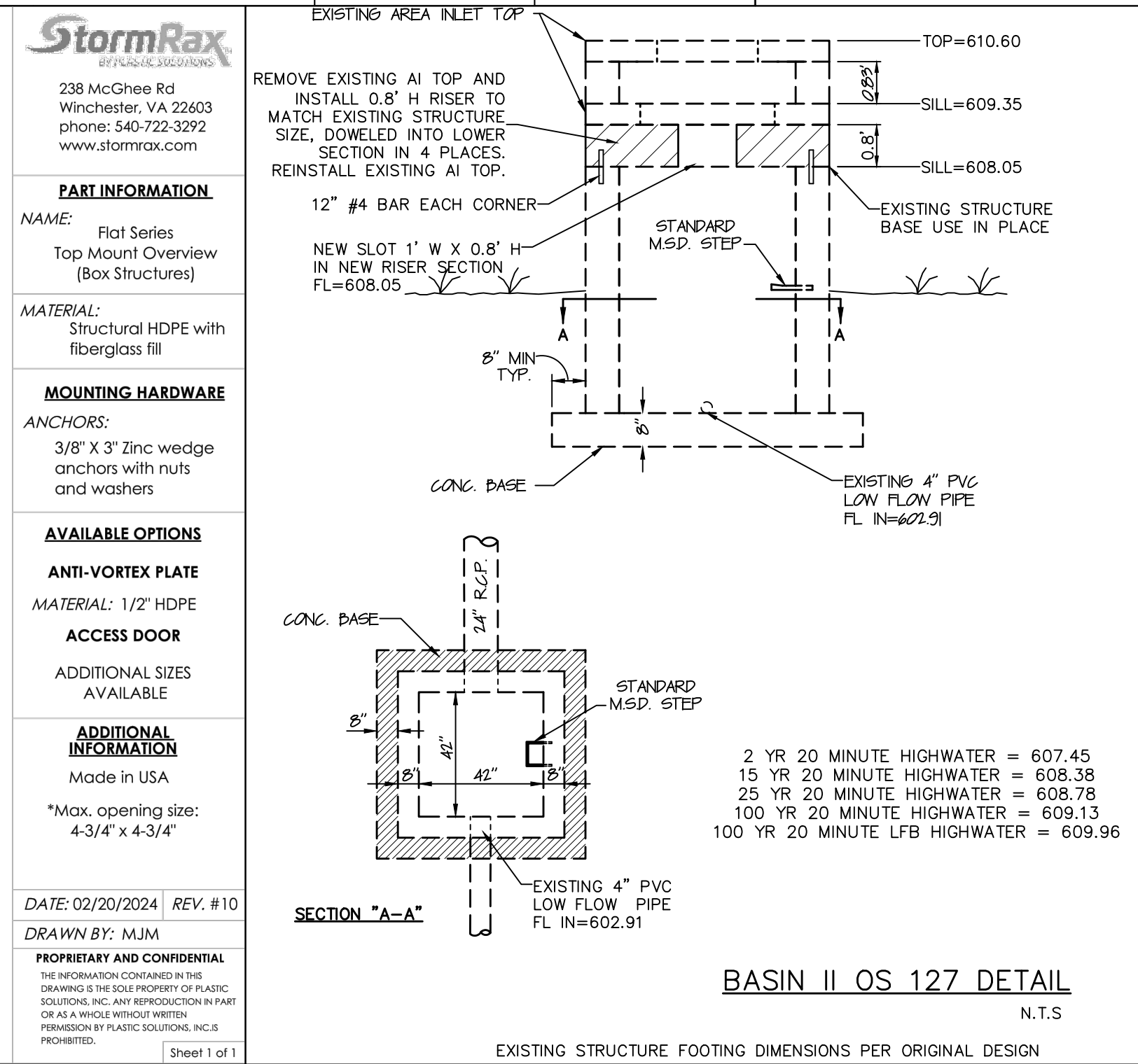
SIZE TABLE	
WIDTH 'A'	11-3/8" 14-3/4" 22-1/8" 27-1/2" 32-7/8" 38-1/4" 43-5/8" 49" 54-3/8"
LENGTH 'B'	11-3/8" 14-3/4" 22-1/8" 27-1/2" 32-7/8" 38-1/4" 43-5/8" 49" 54-3/8"
HEIGHT 'C'	12-7/8" 2 GRID HIGH (STANDARD)
	7-1/2" 1 GRID HIGH (ALSO AVAILABLE)

CONCRETE STRUCTURE DIMS (IN.)			STORMRAX FLAT DIMS (IN.)		
I.D. width:	I.D. length:	Wall thickness (Req'd):	Width A:	Length B:	Height C:

Customer: _____ Date: _____
 Project: _____ By: _____

DATE: 02/20/2024 REV: #10
 DRAWN BY: MJM

PROPRIETARY AND CONFIDENTIAL
 THE INFORMATION CONTAINED IN THIS DRAWING IS THE SOLE PROPERTY OF PLASTIC SOLUTIONS, INC. ANY REPRODUCTION IN PART OR AS A WHOLE WITHOUT WRITTEN PERMISSION BY PLASTIC SOLUTIONS, INC. IS PROHIBITED.



Developer / Owner:
MRS TROMBONE LLC
1100 WOODCHASE LANE
CHESTERFIELD, MO 63071
314-469-0029

P+Z No. 23-010426
Approval Date: 1-4-24
City No. #
Page No.

DETENTION/WATER QUALITY DETAILS

NOTE: SNOOT SHALL BE INSTALLED PRIOR TO CONE SECTION INSTALLATION & PAVING

32 of 34