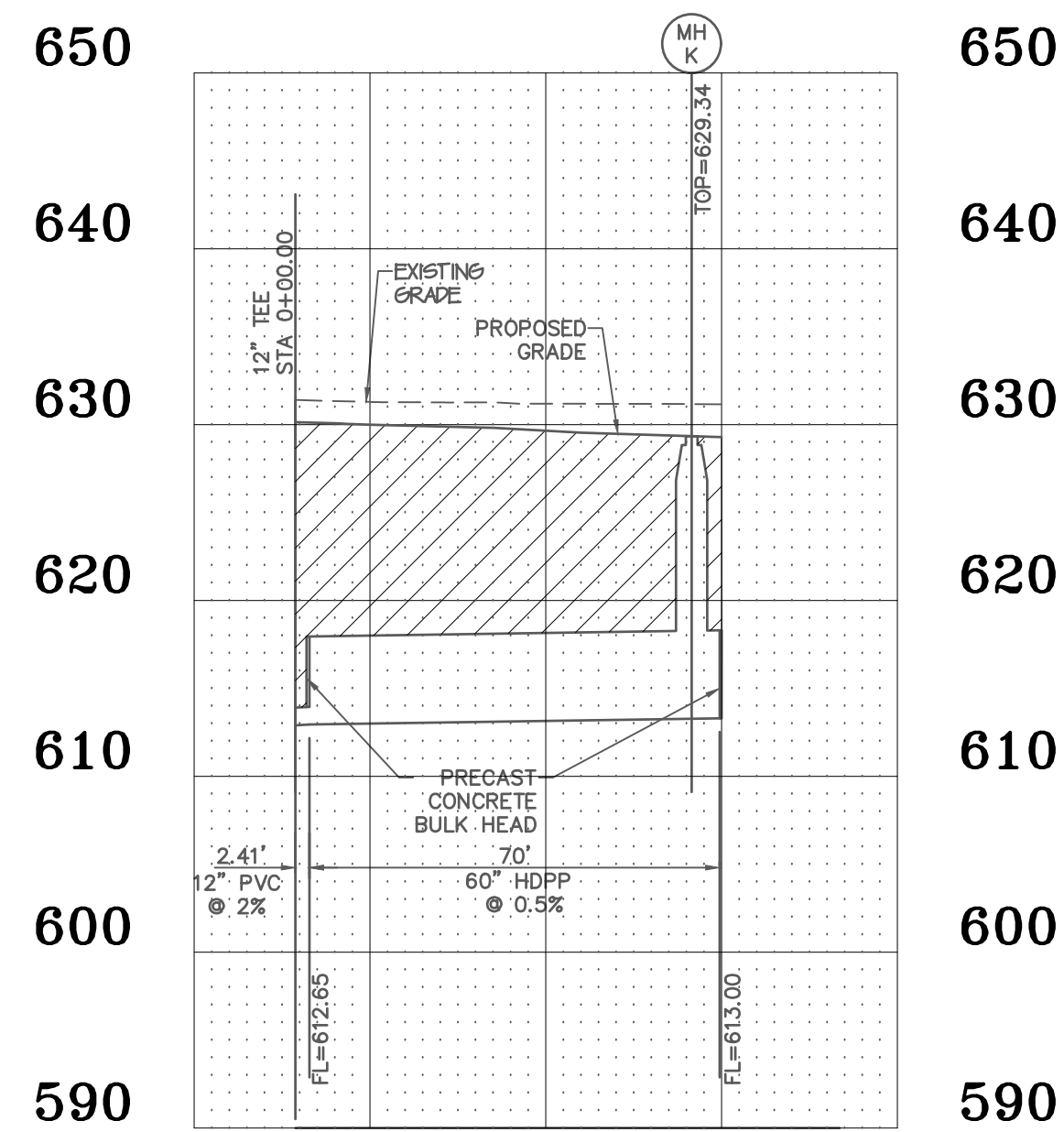
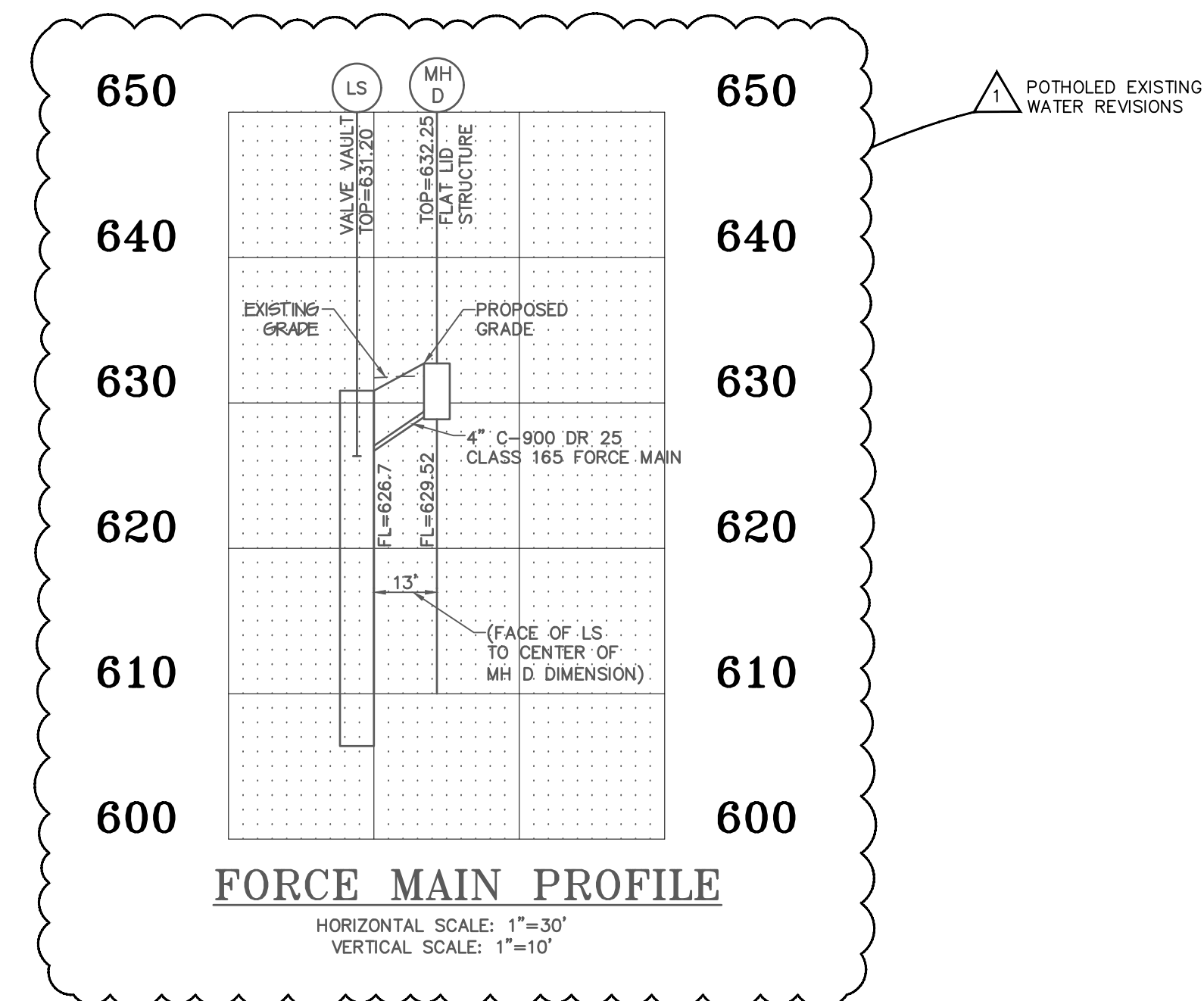


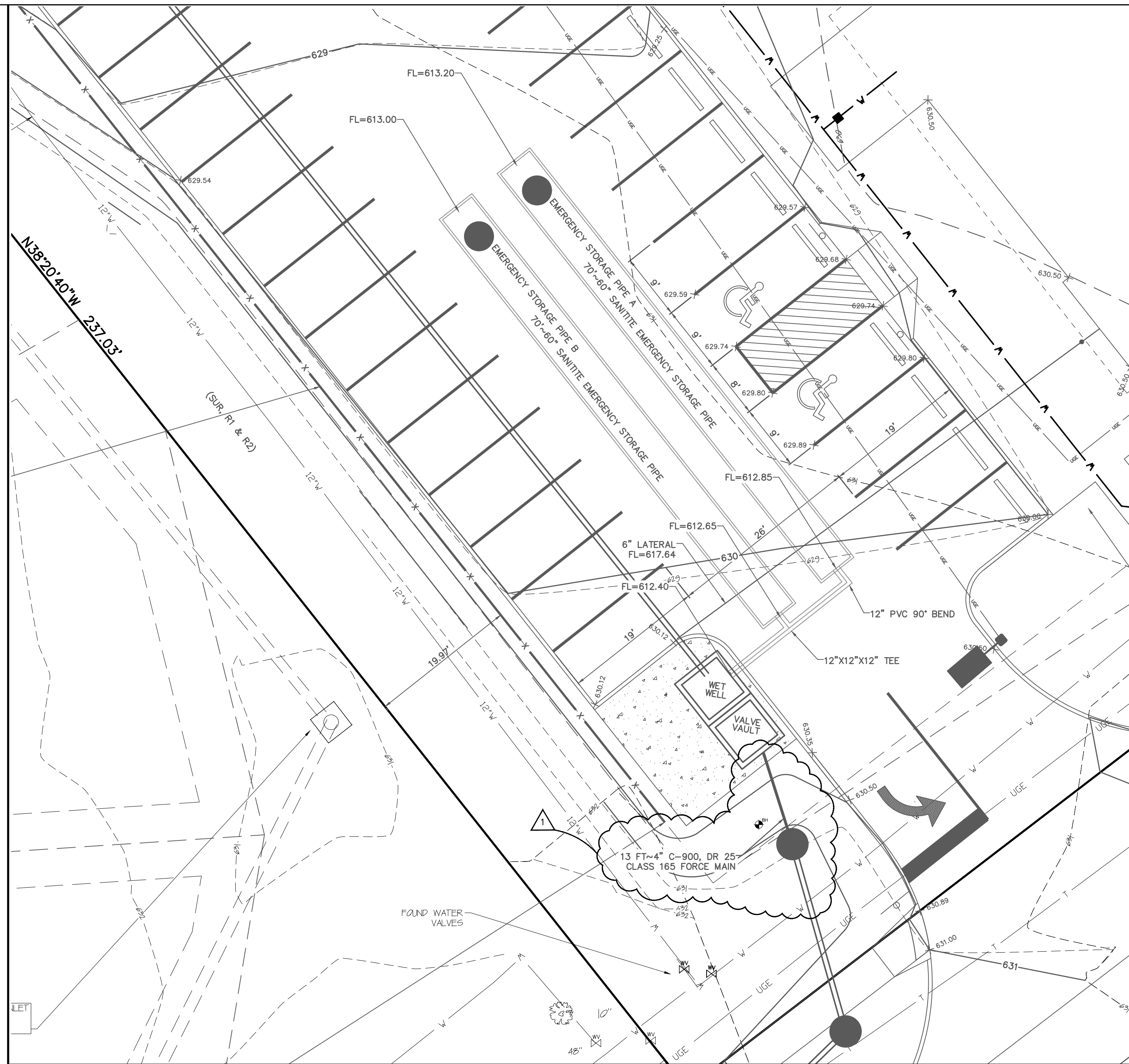
EMERGENCY STORAGE PIPE A PROFILE
 HORIZONTAL SCALE: 1"=30'
 VERTICAL SCALE: 1"=10'



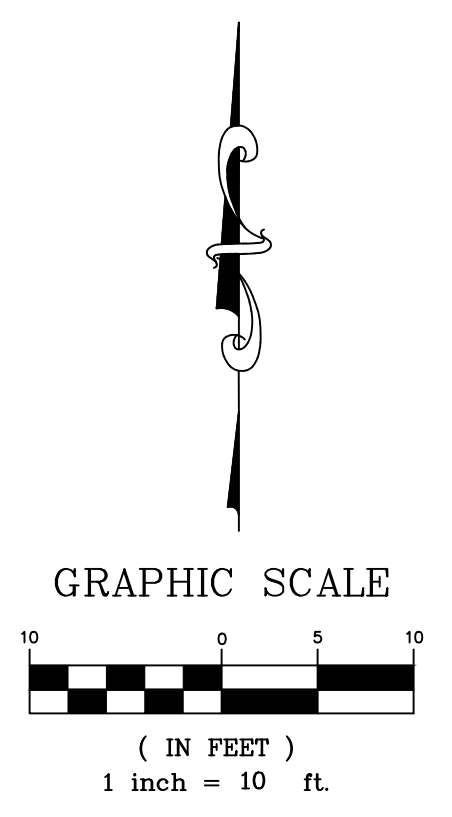
EMERGENCY STORAGE PIPE B PROFILE
 HORIZONTAL SCALE: 1"=30'
 VERTICAL SCALE: 1"=10'



FORCE MAIN PROFILE
 HORIZONTAL SCALE: 1"=30'
 VERTICAL SCALE: 1"=10'

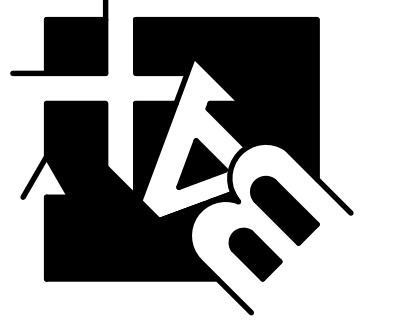


LIFT STATION SITE PLAN



PROJECT TITLE:
 THORNWOOD APARTMENTS
 THORNBURY CROSSING DRIVE
 OFALLON, MO 63366

**ENGINEERING
 PLANNING
 SURVEYING**
 221 Point West Blvd.
 St. Charles, MO 63301
 636-928-5552
 FAX 636-928-1718



DISCLAIMER OF RESPONSIBILITY
 I hereby certify that the documents intended to be authenticated by my seal are limited to this sheet, and I hereby disclaim any responsibility for all other Drawings, Specifications, Estimates, Reports or other documents or instruments relating to or intended to be used for any part or parts of the architectural or engineering project or survey.



CLIFFORD L. HEITMANN
 Civil Engineer
 Engineers License E-29817

REVISIONS

07-25-24	CITY COMMENTS
08-15-24	CITY COMMENTS
10-7-24	POTHOLE WATER

Bax Engineering Company, Inc.
 Missouri State Certificate of Authority
 Engineering #000655
 Missouri State Certificate of Authority
 Surveying #000144

Developer / Owner:
 MRS TROMBONE LLC
 100 WOODCHASE LANE
 CHESTERFIELD, MO 6307
 314-469-0029

LIFT STATION DETAILS

P+Z No. 23-010426
Approval Date: 1-4-24
City No. #

Page No.
 29 of 34

I:\VAULT\SERVER\Civil\3d Projects\19014\Construction\19014\Constsheets.dwg, ARCH full bleed D (24.00 x 36.00 inches), 1:1