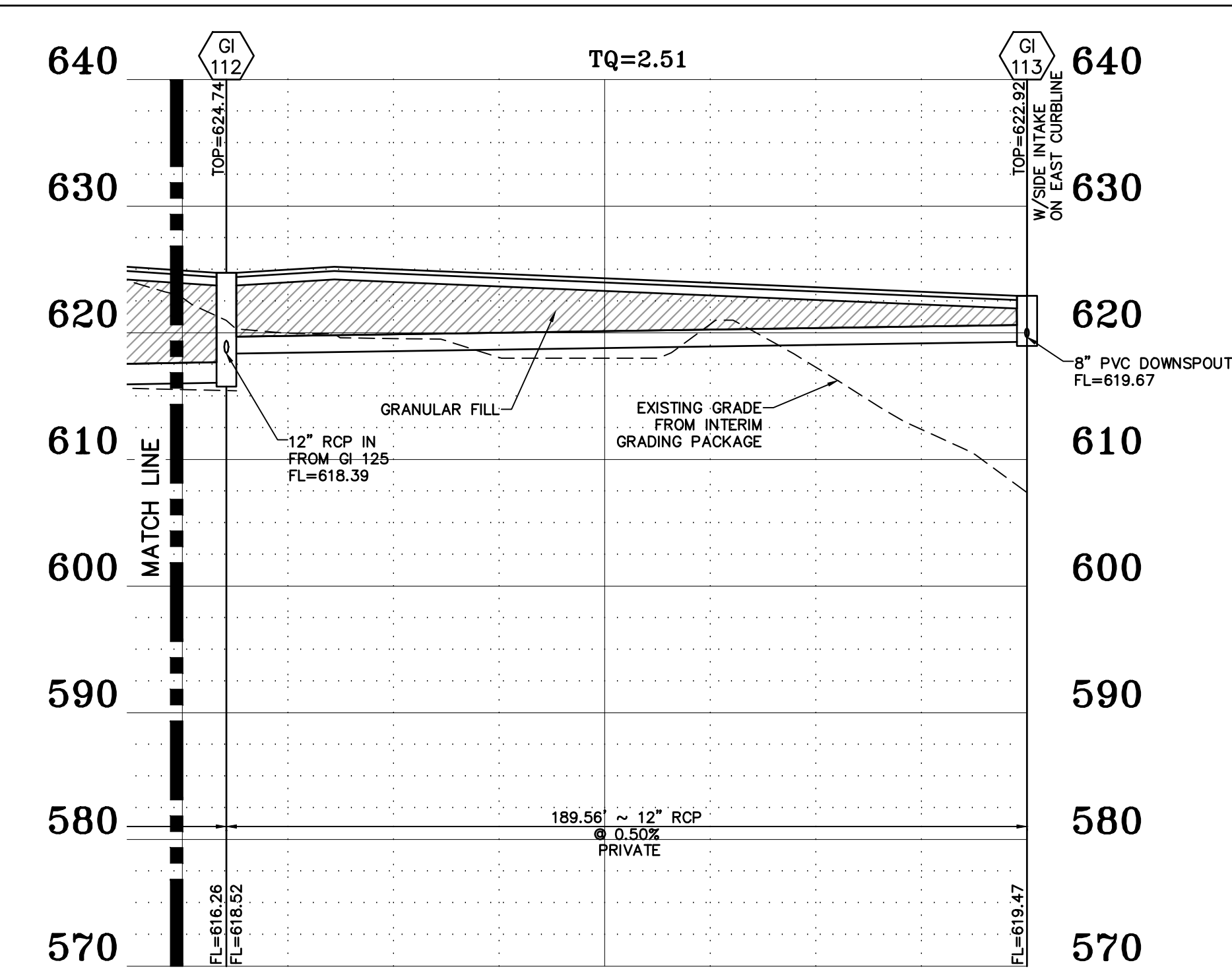
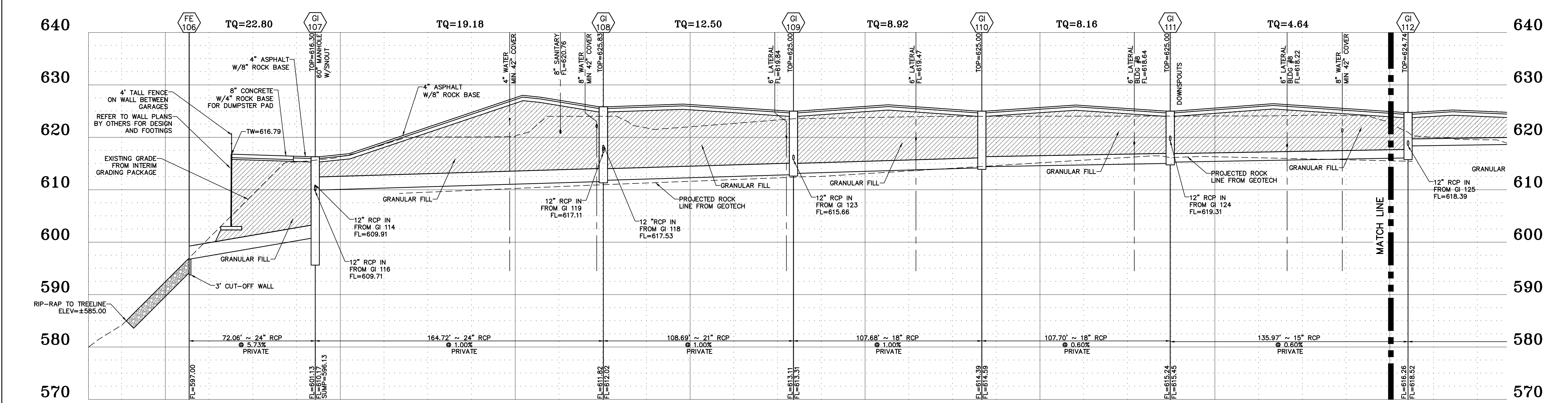


STORM PROFILE
 HORIZONTAL SCALE: 1"=30'
 VERTICAL SCALE: 1"=10'



STORM PROFILE
 HORIZONTAL SCALE: 1"=30'
 VERTICAL SCALE: 1"=10'



STORM PROFILE
 HORIZONTAL SCALE: 1"=30'
 VERTICAL SCALE: 1"=10'

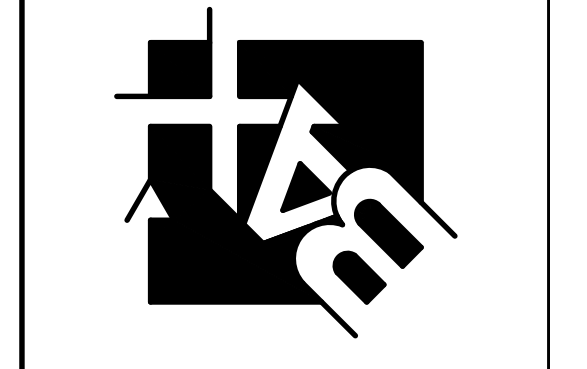
NOTE: RIP-RAP SHOWN AT FLARED ENDS WILL BE EVALUATED IN THE FIELD BY THE ENGINEER, CONTRACTOR AND CITY INSPECTOR AFTER INSTALLATION FOR EFFECTIVENESS AND FIELD MODIFIED, IF NECESSARY, TO REDUCE EROSION ON AND OFF-SITE.

PROVIDE MARKINGS ON STORM SEWER INLET COVERS

Manufacturer	Size	Adhesive	Style	Message (Part #)	Website
ACP International	3 7/8"	Epoxy	Crystal Cap	No Dumping Drains To Waterways (SD-W-CC)	www.acpinternational.com
DAS Manufacturing, Inc.	4"	Epoxy	Standard Style	No Dumping Drains To Stream (#SDS)	www.dasmanufacturing.com

PROJECT TITLE:
 THORNWOOD APARTMENTS
 THORNBUARY CROSSING DRIVE
 OFALLON, MO 63366

ENGINEERING PLANNING SURVEYING
 221 Point West Blvd.
 St. Charles, MO 63301
 636-928-5552
 FAX 636-928-1718



DISCLAIMER OF RESPONSIBILITY
 I hereby certify that the documents intended to be authenticated by my seal are limited to this sheet, and I hereby disclaim any responsibility for all other Drawings, Specifications, Estimates, Reports or other documents or instruments relating to or intended to be used for any part or parts of the architectural or engineering project or survey.



REVISIONS

07-25-24	CITY COMMENTS
08-15-24	CITY COMMENTS

Bax Engineering Company, Inc.
 Missouri State Certificate of Authority
 Engineering #000655
 Missouri State Certificate of Authority
 Surveying #000144

Developer / Owner:
 MRS TROMBONE LLC
 1100 WOODCHASE LANE
 CHESTERFIELD, MO 6307
 314-469-0029

STORM PROFILES

P+Z No. 23-010426
Approval Date: 1-4-24
City No. #

Page No.
 11 of 34

I:\VAULT\SERVER\Civil\34 Projects\19014\Construction\19014\Constsheets.dwg, ARCH full bleed D (24.00 x 36.00 inches), 1:1