

DESIGN CRITERIA

DESIGN SPEED = 40 MPH
 LANE WIDTH = 12.0'
 MAXIMUM GRADIENT = 6.00%
 MINIMUM STOPPING SIGHT DISTANCE = 305'
 CONSTRUCTION YEAR ADT(2006) = 10,500
 DESIGN YEAR ADT(2030) = 17,500

UTILITY COMPANIES

UTILITY COMPANY	LINE LOCATION NO.
AMEREN UE	636-639-8316
CENTURY TEL	636-332-7261
CHARTER	314-361-4331
CUIVRE RIVER ELECTRIC	636-327-5282
LACLEDE GAS CO.	314-535-7700
ALLIANCE WATER RESOURCES	636-272-6818

LEGEND

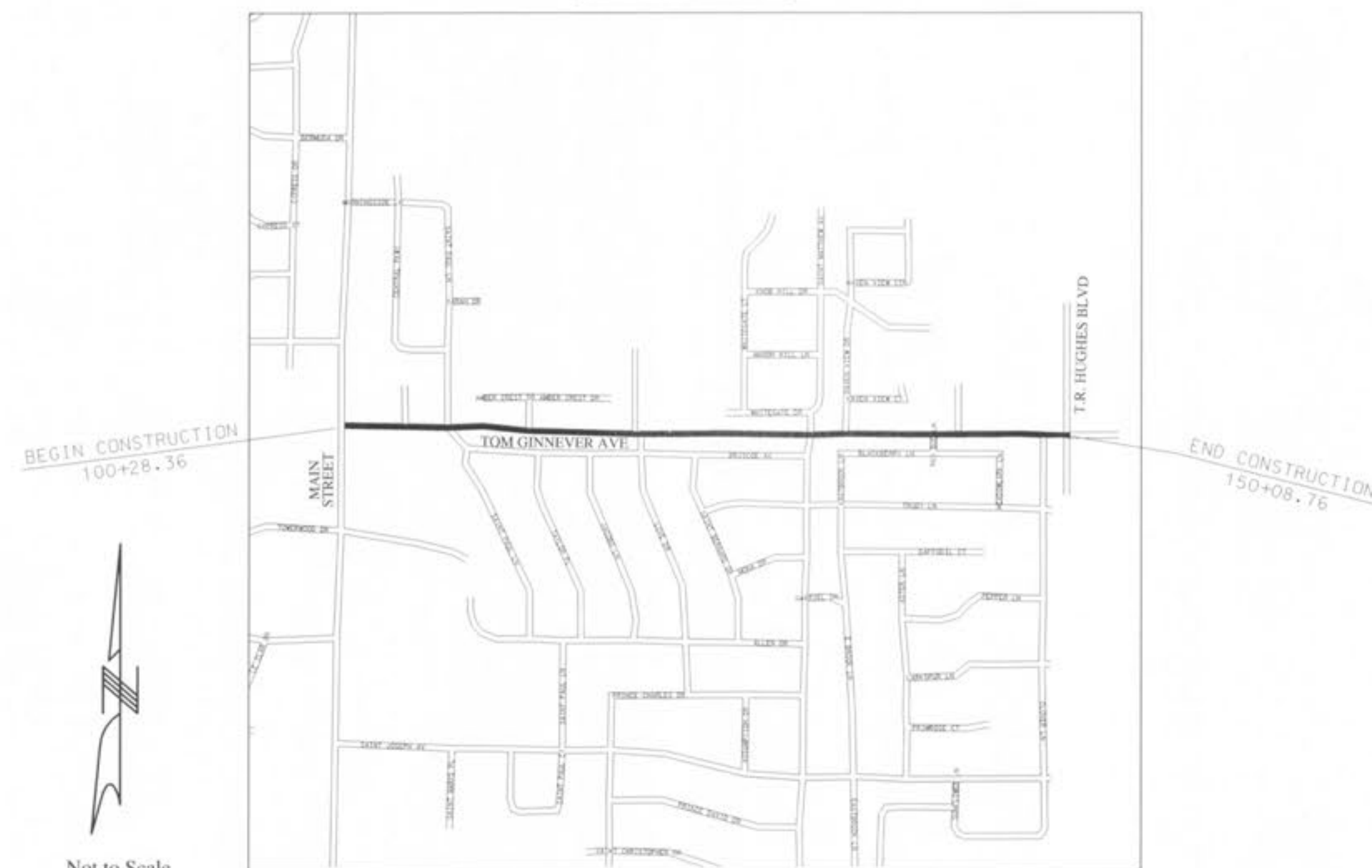
	EXISTING	NEW
BUILDINGS AND STRUCTURES		
GUARD RAIL		
LOCATION SURVEY MARKER		
UTILITIES		
FIBER OPTICS	-FO-	-FO-
OVERHEAD TELEPHONE	-O-	-O-
UNDERGROUND TELEPHONE	-T-	-T-
OVERHEAD POWER	-P-	-P-
UNDERGROUND POWER	-P-	-P-
GAS	-G-	-G-
WATER	-W-	-W-
CABLE	-CATV-	-CATV-
SANITARY SEWER	-S-	-S-
RIGHT OF WAY		
PERMANENT EASEMENT		
TEMPORARY CONSTRUCTION EASEMENT		
PROPERTY LINE		
SLOPE LIMITS (S.L.)		
EXISTING GROUND		
PROPOSED GRADE		
MANHOLE		
FIRE HYDRANT		
GAS VALVE		
WATER VALVE		
WATER METER		
DROP INLET		
DITCH BLOCK		
GROUND MOUNTED SIGN		
STREET LIGHT		
LIGHT POLE		
TELEPHONE PEDESTAL		
FENCE		
CHAIN LINK	V	V
WOODEN OR WOVEN WIRE	X	X
GATE POST		
BENCHMARK		
PROPERTY TIE		
NEOPLAST AREA DRAIN(AD)		
TEMPORARY CONSTRUCTION EASEMENT		
USE IN PLACE		
REMOVE		
DO NOT DISTURB		
SAVE		
RELOCATE		
ADJUST TO GRADE		
REMOVE & REPLACE		
STORM SEWER PIPE		

CONSTRUCTION PLANS FOR TOM GINNEVER AVENUE PHASE I IMPROVEMENTS IN O'FALLON ST. CHARLES COUNTY, MISSOURI



CITY OF O'FALLON
 100 NORTH MAIN STREET
 O'FALLON, MO 63366

VICINITY MAP



Not to Scale

LENGTH OF PROJECT:
 TOM GINNEVER ROAD: 4,980.40 LF
 (GRADING, PAVING, DRAINAGE, WATER MAIN, & SIGNALS)

EXISTING CONDITIONS SURVEY COMPLETED BY BAX ENGINEERING IN 2001

INDEX

TITLE SHEET	1
TYPICAL SECTIONS	2
SUMMARY OF QUANTITIES	2B
PLAN AND PROFILE	3-14
R/W PLAN	15-25
STORM SEWER PROFILES	26-35
WATER MAIN CONSTRUCTION DETAILS	36-44
INTERSECTION DETAILS	45-48
SIDEWALK DETAILS	49-50
ENTRANCE DETAILS	51-52
STORM SEWER DETAILS	53-55
JOINT DETAIL	56-58
PARKING LOT DETAIL	59
COORDINATE & REFERENCE POINTS	60
GEOMETRIC LAYOUT	61
TEMPORARY EROSION CONTROL	62-63
TRAFFIC SIGNAL PLAN	64-70
PAVEMENT MARKING AND SIGNING	71-75
TRAFFIC CONTROL PLAN	76-81
TRAFFIC SIGNAL PLAN(ST. MATTHEW AVE)	82-86
CROSS SECTIONS	1-24

APPROVED BY:

DIRECTOR OF COMMUNITY DEVELOPMENT

DATE

PREPARED & SUBMITTED BY:
 GEORGE BUTLER ASSOCIATES, INC.
 225 SOUTH MAIN STREET, SUITE 200
 O'FALLON, MISSOURI 63366

ENGINEER - DANIEL T. SHANE, P.E., PTOE



GBA GEORGE BUTLER ASSOCIATES, INC.
 Engineers • Architects

JULY 2007