

CURVE 1  
 PI 105+64.48  
 PC 104+70.61  
 PRC 106+57.42  
 $\Delta$  13° 59' 28.2" (LT)  
 D 7° 29' 22.7"  
 L 186.81'  
 T 93.87'  
 R 765.00'

CURVE 2  
 PI 107+47.61  
 PRC 106+57.42  
 PT 108+36.90  
 $\Delta$  13° 59' 28.2" (RT)  
 D 7° 47' 43.2"  
 L 179.48'  
 T 90.19'  
 R 735.00'

CURVE 4  
 PI 9+81.09  
 PRC 9+07.62  
 PT 10+47.50  
 $\Delta$  43° 19' 22.3" (RT)  
 D 30° 58' 14.5"  
 L 139.88'  
 T 73.48'  
 R 185.00'

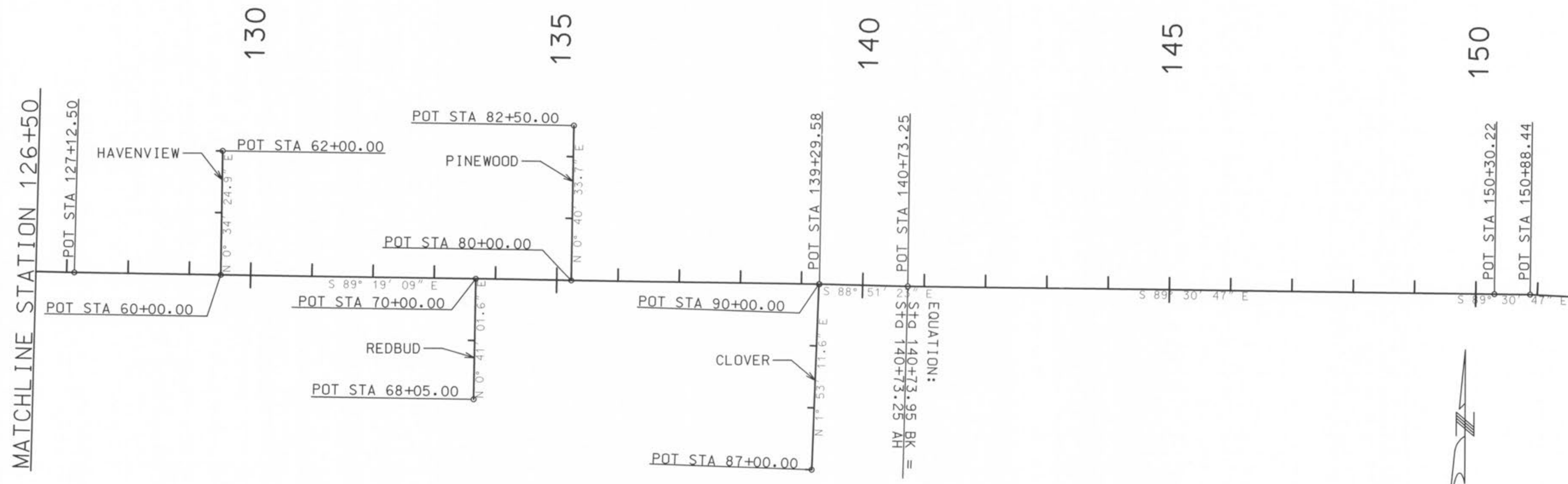
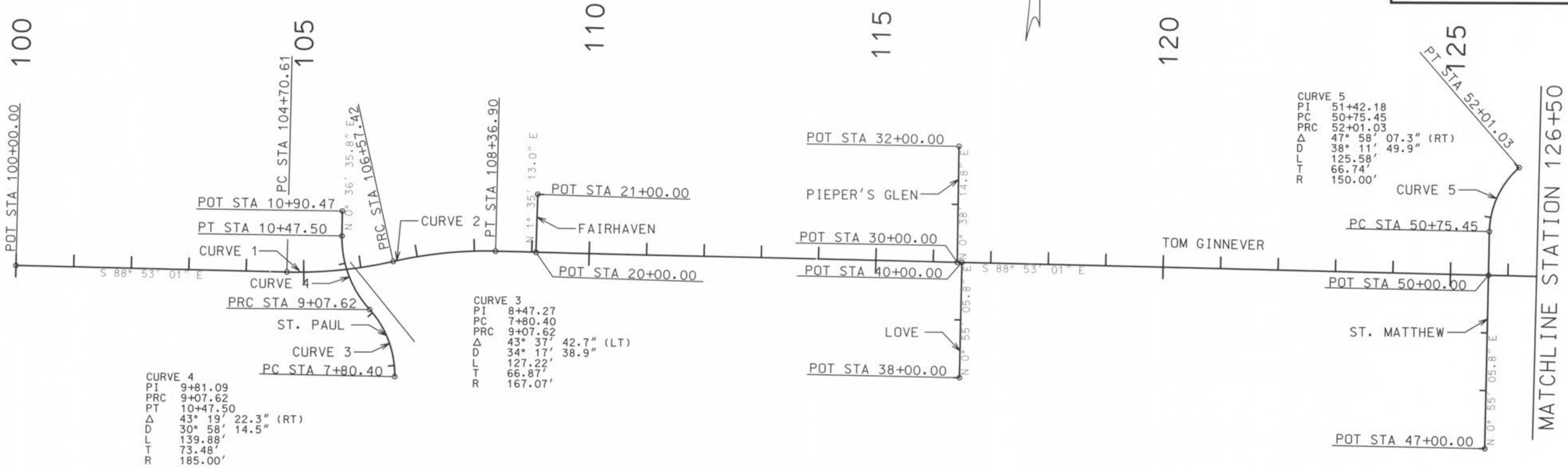
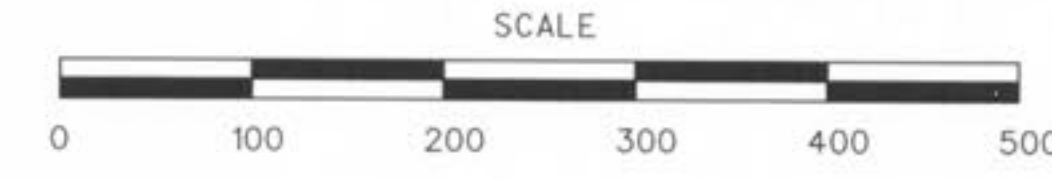
CURVE 3  
 PI 8+47.27  
 PC 7+80.40  
 PRC 9+07.62  
 $\Delta$  43° 37' 42.7" (LT)  
 D 34° 17' 38.9"  
 L 127.22'  
 T 66.87'  
 R 167.07'

CURVE 5  
 PI 51+42.18  
 PC 50+75.45  
 PRC 52+01.03  
 $\Delta$  47° 58' 07.3" (RT)  
 D 38° 11' 49.9"  
 L 125.58'  
 T 66.74'  
 R 150.00'

**GBA** GEORGE BUTLER ASSOCIATES, INC.  
 Engineers • Architects

TOM GINNEVER ROAD IMPROVEMENTS  
 PHASE I  
 O'FALLON, MISSOURI

DATE:	JULY 2007
DESIGN BY:	DTS
DRAWN BY:	CDP
PROJECT NO.:	10716
SHEET NO.	61
TOTAL SHEETS	86



GEOMETRIC LAYOUT  
 SHEET 1 OF 1