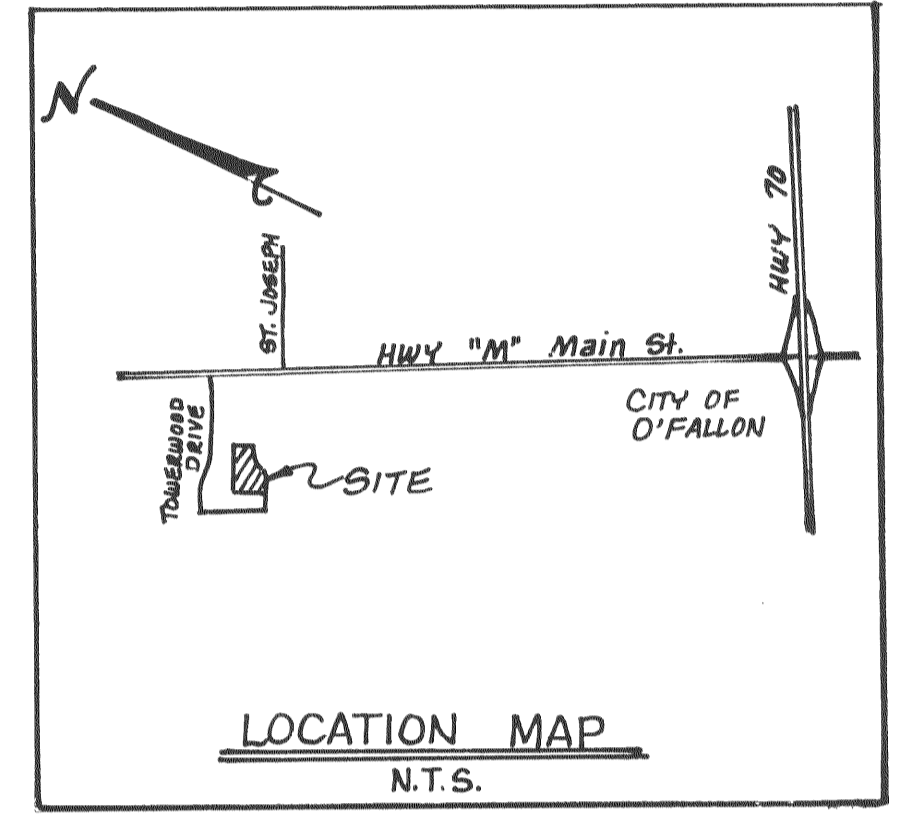
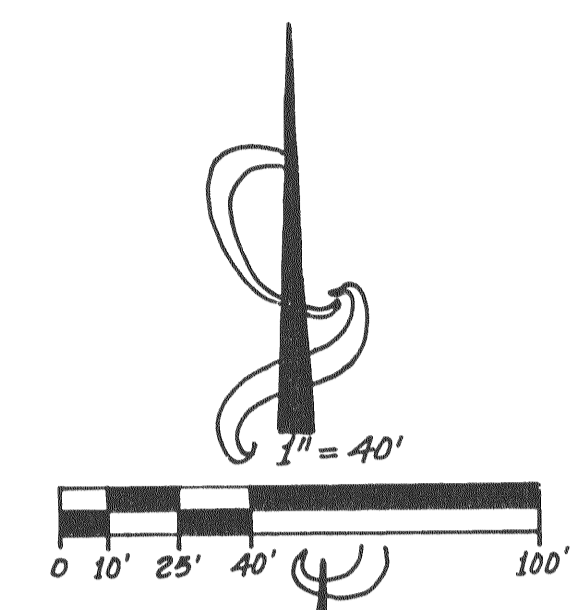
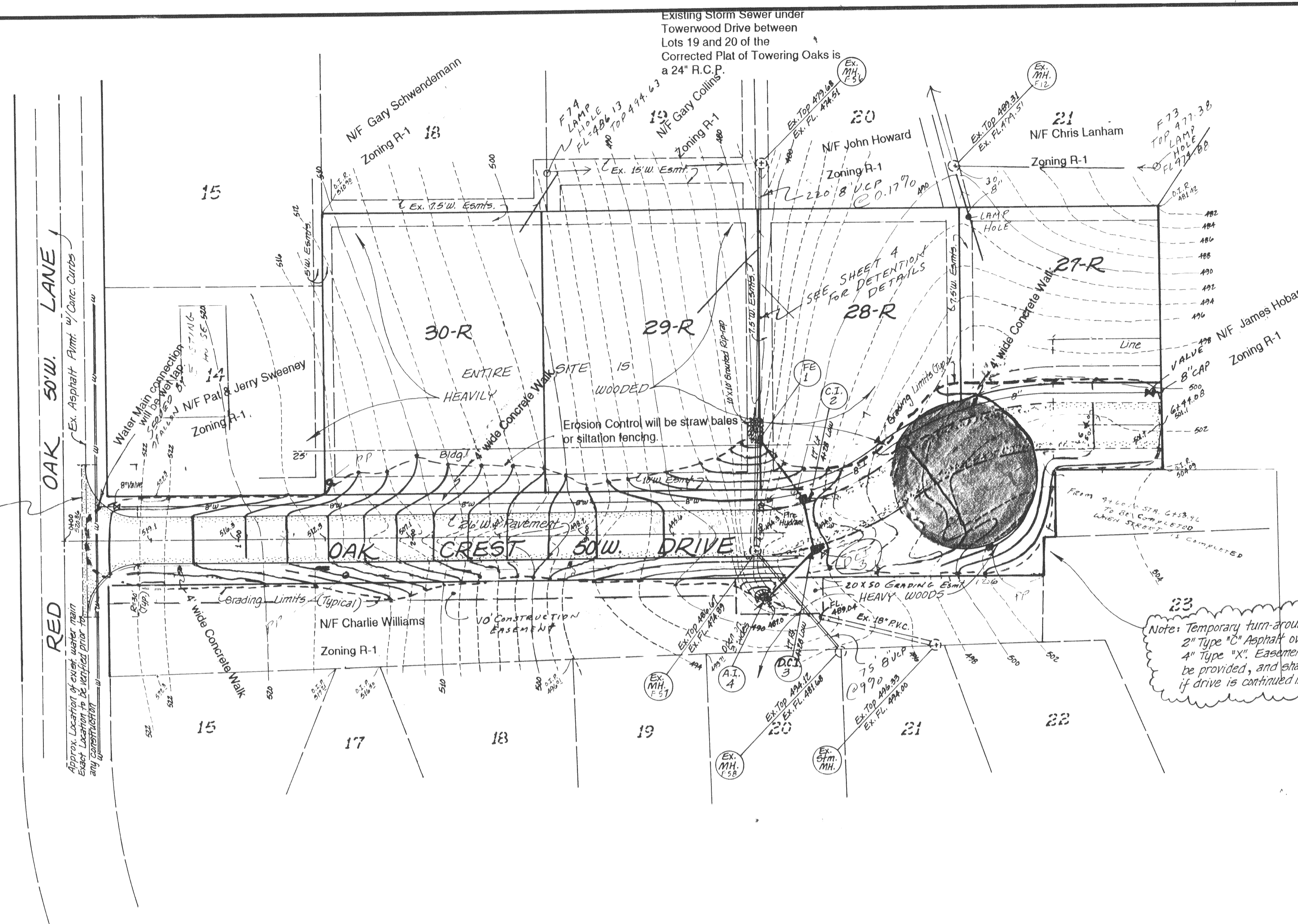


Note: Saw-cut and/or remove exist. conc. curb from P.C. to P.C. & replace with like materials.



Note: Temporary turn-around 2" Type 'C' Asphalt over 4" Type 'X'. Easement shall be provided, and shall be vacated if drive is continued in future.

THIS SITE IS LOCATED IN AND SERVED BY:
 St. Charles County Public Water District No. 2
 City of O'Fallon Sanitary Sewers
 GTE Telephone
 Union Electric Co.
 St. Charles Gas Co.
 O'Fallon Fire Protection District
 Fort Zumwalt School District

This subdivision does not fall in a Flood Area according to FEMA Map #29183C0120D, effective date, Dec. 15, 1992.

U.S.G.S. B.M. "□" on SOUTH Conc. CURB OF WEST TOWERWOOD ± 70' LT. STA. 72+73 OF MAIN ST. PER. BUTLER & ASSOC.

Rev 10/11/95
 4/9/95
 Eugene J. Petersen

Revised 19 July 95
 Engineering Consultant: Eugene J. Petersen, P.E.

Revised 2/24/95	Sheet 2 of 7
METTS & ASSOCIATES, INC.	
LAND SURVEYORS ~ CIVIL ENGINEERS	
421 W. Terra Lane O'Fallon, Mo. 63366	
(314) 978-5533 FAX (314) 978-5534	
Order No.	Date 5/27/95