

proposed prior to planting, as recommended by an agronomist, competent nursery company, or refer to NRCS MOFOTG Code 340 (Cover Crop) in Appendix D.

For channels, embankments, and slopes of 4:1 or steeper, seeding shall be a mixture of K31 fescue and rye at a rate of 400 pounds per acre.

**Table 60-7 Temporary Fall Seeding**

Plant Species	Rate (lb/acre)	Seeding Times
Side-Oats	65	8/16 - 9/30
Winter Rye	50	8/01 - 10/15
Winter Wheat	60	8/01 - 10/15
Orchard Grass	120	8/01 - 10/15
Perennial Ryegrass	80	8/01 - 10/15
Tall fescue, Smooth Brome	80	8/01 - 10/15
K-31 Fescue	120	9/01 - 11/15
Ladino Clover	2 <sup>2</sup>	8/15 - 9/15
Crimson Clover	6 <sup>2</sup>	8/15 - 9/15
Orchard Grass and Oats or Rye	15 <sup>2</sup> 40 <sup>2</sup>	8/15 - 9/15

NOTES:

- REFER TO DESIGN MANUAL FOR APPLICATION RATES.
- DUE TO THE DIFFERENT PRODUCTS ON THE MARKET, CONTRACTOR MUST SUBMIT MANUFACTURER SPECIFICATIONS ON APPLICATION RATE AND PROCEDURES.

1<sup>1</sup> If using aerial seeding or other broadcast method to apply seed without rolling or culti-packing, increase seeding rates by 50 percent.

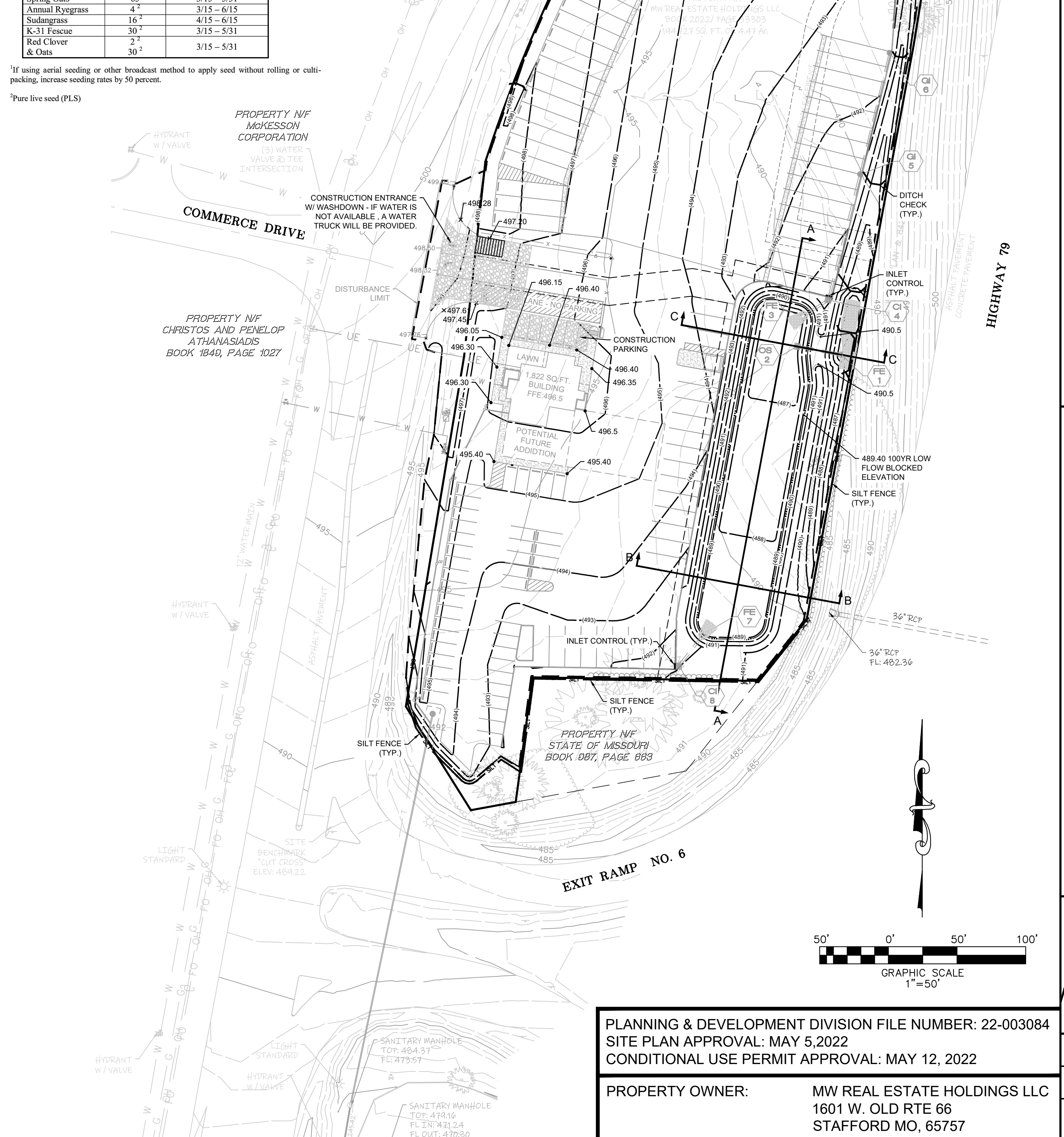
2<sup>2</sup> Pure live seed (PLS)

**Table 60-8 Temporary Spring Seeding**

Plant Species	Rate (lb/acre)	Seeding Dates
Winter Rye	50	3/15 - 5/31
Spring Oats	65	3/15 - 5/31
Annual Ryegrass	4 <sup>2</sup>	3/15 - 6/15
Sudangrass	16 <sup>2</sup>	4/15 - 6/15
K-31 Fescue	30 <sup>2</sup>	3/15 - 5/31
Red Clover	2 <sup>2</sup>	3/15 - 5/31
Oats	30 <sup>2</sup>	3/15 - 5/31

1<sup>1</sup> If using aerial seeding or other broadcast method to apply seed without rolling or culti-packing, increase seeding rates by 50 percent.

2<sup>2</sup> Pure live seed (PLS)



08-12-2022 1ST SUBMITTAL  
09-30-2022 GRADING PLAN SUBMITTAL  
10-18-2022 2ND SUBMITTAL  
10-27-2022 MDOOT SUBMITTAL  
11-03-2022 3RD SUBMITTAL  
02-07-2023 CITY COMMENTS

**CONSTRUCTION PLANS**

**TRANSLAND TRUCKING**

**3480 E. TERRA LANE**

**O'FALLON MO, 63366**

**GRADING PLAN & SWPPP**

**ST. CHARLES ENGINEERING & SURVEYING, INC.**

801 S. FIFTH STREET, SUITE 202  
ST. CHARLES, MO 63301  
TEL: (636) 947-0607 FAX: (636) 947-2448

ST. CHARLES ENGINEERING AND SURVEYING, INC.  
PROFESSIONAL ENGINEERING AND SURVEYING  
MISSOURI STATE CERTIFICATE AUTHORITY - 001647 & 000379

**PLANNING & DEVELOPMENT DIVISION FILE NUMBER: 22-003084**

**SITE PLAN APPROVAL: MAY 5, 2022**

**CONDITIONAL USE PERMIT APPROVAL: MAY 12, 2022**

PROPERTY OWNER: MW REAL ESTATE HOLDINGS LLC  
1601 W. OLD RTE 66  
STAFFORD MO, 65757

**ORDER NO. 2022082**

**DATE 02/07/2023**

**4**