

proposed prior to planting, as recommended by an agronomist, competent nursery company, or refer to NRCS MOFOTG Code 340 (Cover Crop) in Appendix D.

For channels, embankments, and slopes of 4:1 or steeper, seeding shall be a mixture of K31 fescue and rye at a rate of 400 pounds per acre.

Table 60-7 Temporary Fall Seeding

Plant Species	Rate (lb/acre)	Seeding Times
Side-Oats	65	8/16 - 9/30
Winter Rye	50	8/01 - 10/15
Winter Wheat	60	8/01 - 10/15
Orchard Grass	120	8/01 - 10/15
Perennial Ryegrass	80	8/01 - 10/15
Tall fescue, Smooth Brome	80	8/01 - 10/15
K-31 Fescue	120	9/01 - 11/15
Ladino Clover	2 ²	8/15 - 9/15
Crimson Clover	6 ²	8/15 - 9/15
Orchard Grass and Oats or Rye	15 ² / 40 ²	8/15 - 9/15

Table 60-8 Temporary Spring Seeding

Plant Species	Rate (lb/acre)	Seeding Dates
Winter Rye	50	3/15 - 5/31
Spring Oats	65	3/15 - 5/31
Annual Ryegrass	4 ²	3/15 - 6/15
Sudangrass	16 ²	4/15 - 6/15
K-31 Fescue	30 ²	3/15 - 5/31
Red Clover & Oats	2 ² / 30 ²	3/15 - 5/31

NOTES

- REFER TO DESIGN MANUAL FOR APPLICATION RATES.
- DUE TO THE DIFFERENT PRODUCTS ON THE MARKET, CONTRACTOR MUST SUBMIT MANUFACTURER SPECIFICATIONS ON APPLICATION RATE AND PROCEDURES.

1 If using aerial seeding or other broadcast method to apply seed without rolling or cultipacking, increase seeding rates by 50 percent.

2 Pure live seed (PLS)

Table 60-7 Temporary Fall Seeding

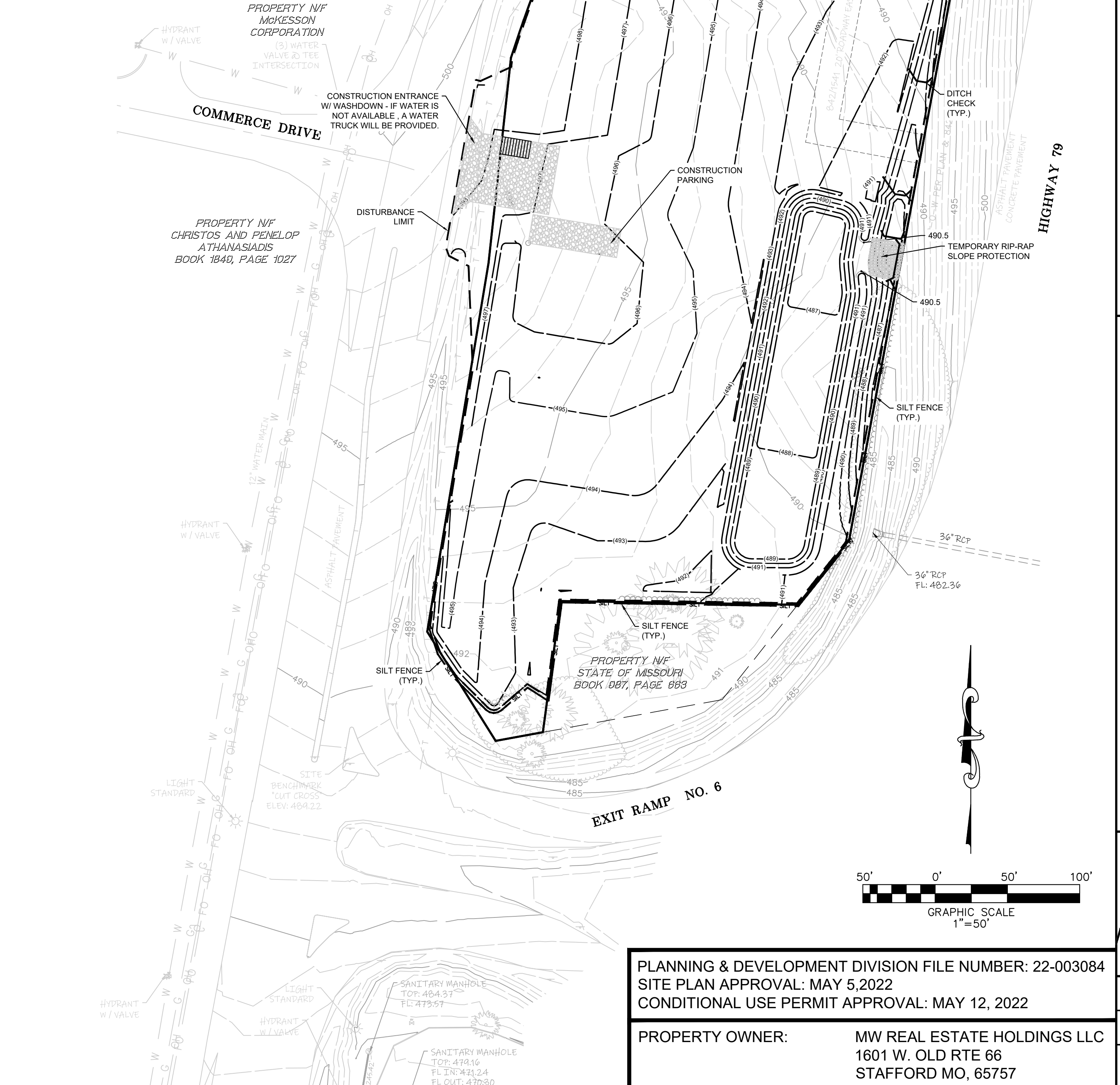
Plant Species	Rate (lb/acre)	Seeding Times
Side-Oats	65	8/16 - 9/30
Winter Rye	50	8/01 - 10/15
Winter Wheat	60	8/01 - 10/15
Orchard Grass	120	8/01 - 10/15
Perennial Ryegrass	80	8/01 - 10/15
Tall fescue, Smooth Brome	80	8/01 - 10/15
K-31 Fescue	120	9/01 - 11/15
Ladino Clover	2 ²	8/15 - 9/15
Crimson Clover	6 ²	8/15 - 9/15
Orchard Grass and Oats or Rye	15 ² / 40 ²	8/15 - 9/15

Table 60-8 Temporary Spring Seeding

Plant Species	Rate (lb/acre)	Seeding Dates
Winter Rye	50	3/15 - 5/31
Spring Oats	65	3/15 - 5/31
Annual Ryegrass	4 ²	3/15 - 6/15
Sudangrass	16 ²	4/15 - 6/15
K-31 Fescue	30 ²	3/15 - 5/31
Red Clover & Oats	2 ² / 30 ²	3/15 - 5/31

NOTES

- If using aerial seeding or other broadcast method to apply seed without rolling or cultipacking, increase seeding rates by 50 percent.
- Pure live seed (PLS)



Call BEFORE you DIG
TOLL FREE
1-800-344-7483
MISSOURI ONE-CALL SYSTEM, INC.

UNDERGROUND UTILITIES HAVE BEEN PLOTTED FROM AVAILABLE INFORMATION AND THEREFORE THEIR LOCATIONS SHALL BE CONSIDERED APPROXIMATE ONLY. THE VERIFICATION OF THE LOCATION OF ALL UNDERGROUND UTILITIES, EITHER SHOWN OR NOT SHOWN ON THESE PLANS, SHALL BE THE RESPONSIBILITY OF THE CONTRACTOR, AND SHALL BE LOCATED PRIOR TO ANY GRADING AND/OR CONSTRUCTION OF IMPROVEMENTS.

2022032 - TRANSLAND PROPERTY\CAD\2022032 SITE PLAN.dwg 10/18/22-2:15pm

PLANNING & DEVELOPMENT DIVISION FILE NUMBER: 22-003084
SITE PLAN APPROVAL: MAY 5, 2022
CONDITIONAL USE PERMIT APPROVAL: MAY 12, 2022

PROPERTY OWNER: MW REAL ESTATE HOLDINGS LLC
1601 W. OLD RTE 66
STAFFORD MO, 65757

1ST SUBMITTAL 08-12-2022
GRADING PLAN SUBMITTAL 09-30-2022
2ND SUBMITTAL 09-30-2022
2ND GRADING PLAN SUBMITTAL 10-18-2022

GRADING PLAN
TRANSLAND TRUCKING
3480 E. TARRA LANE
O'FALLON MO, 63366
GRADING PLAN & SWPPP

ST. CHARLES ENGINEERING & SURVEYING, INC.
801 S. FIFTH STREET, SUITE 202
ST. CHARLES, MO 63301
TEL: (636) 947-0607 FAX: (636) 947-2448

ST. CHARLES ENGINEERING AND SURVEYING, INC.
SURVEYING AND ENGINEERING CORPORATION
MISSOURI STATE CERTIFICATE AUTHORITY - 001647 & 000379

PROFESSIONAL ENGINEER
MICHAEL NEWELL
MEMBER
E-22483
10/18/22

STATE OF MISSOURI
MICHAEL NEWELL
CIVIL ENGINEER P.E. 22483

ORDER NO. 2022032
DATE 10/18/2022
4