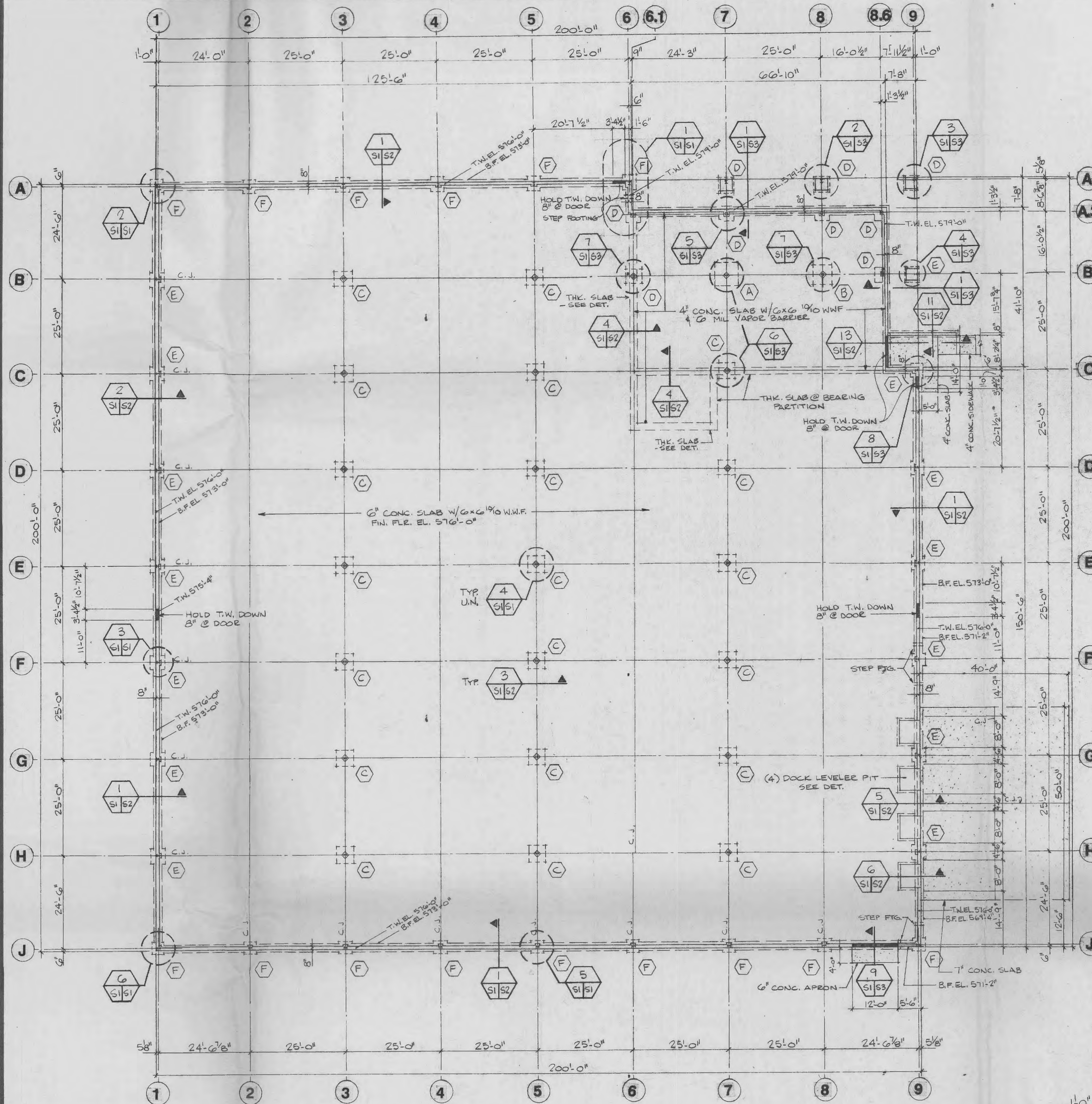


CONCRETE WORK

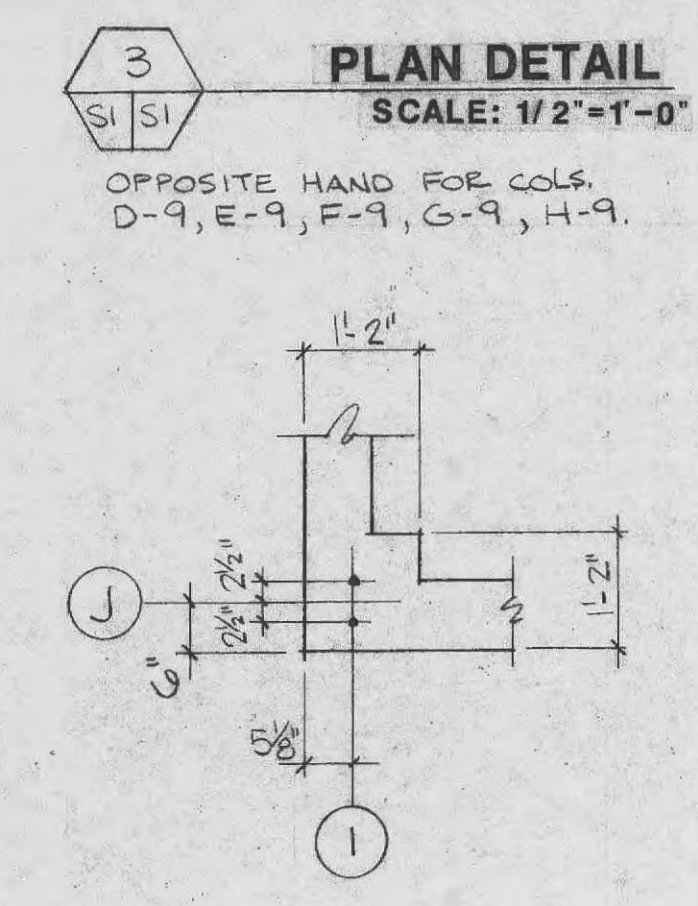
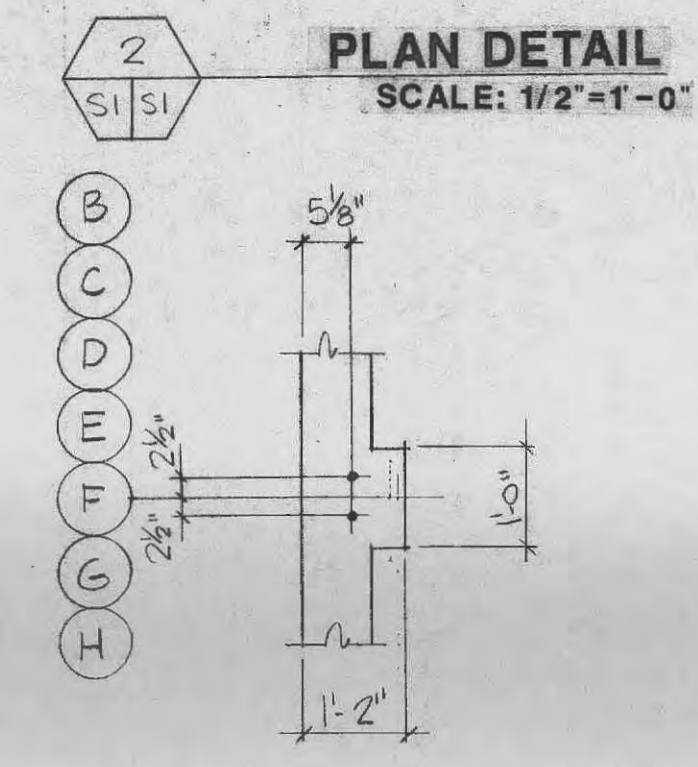
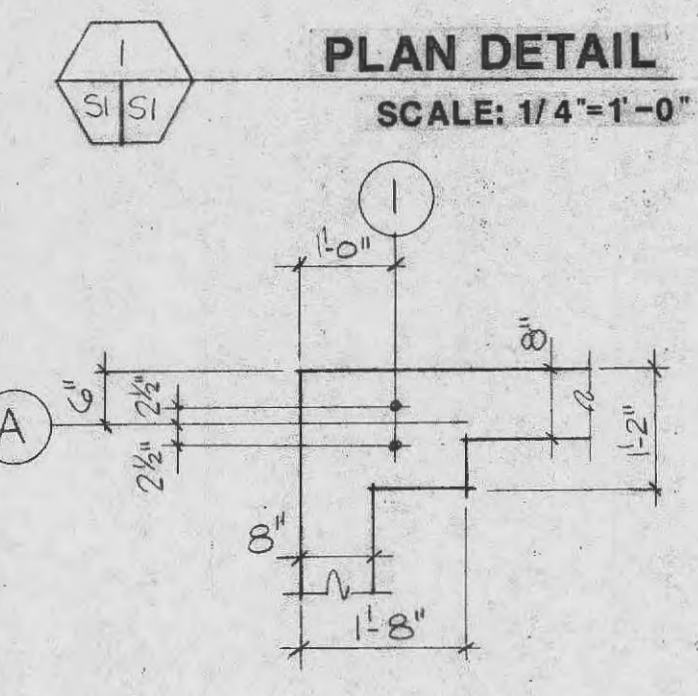
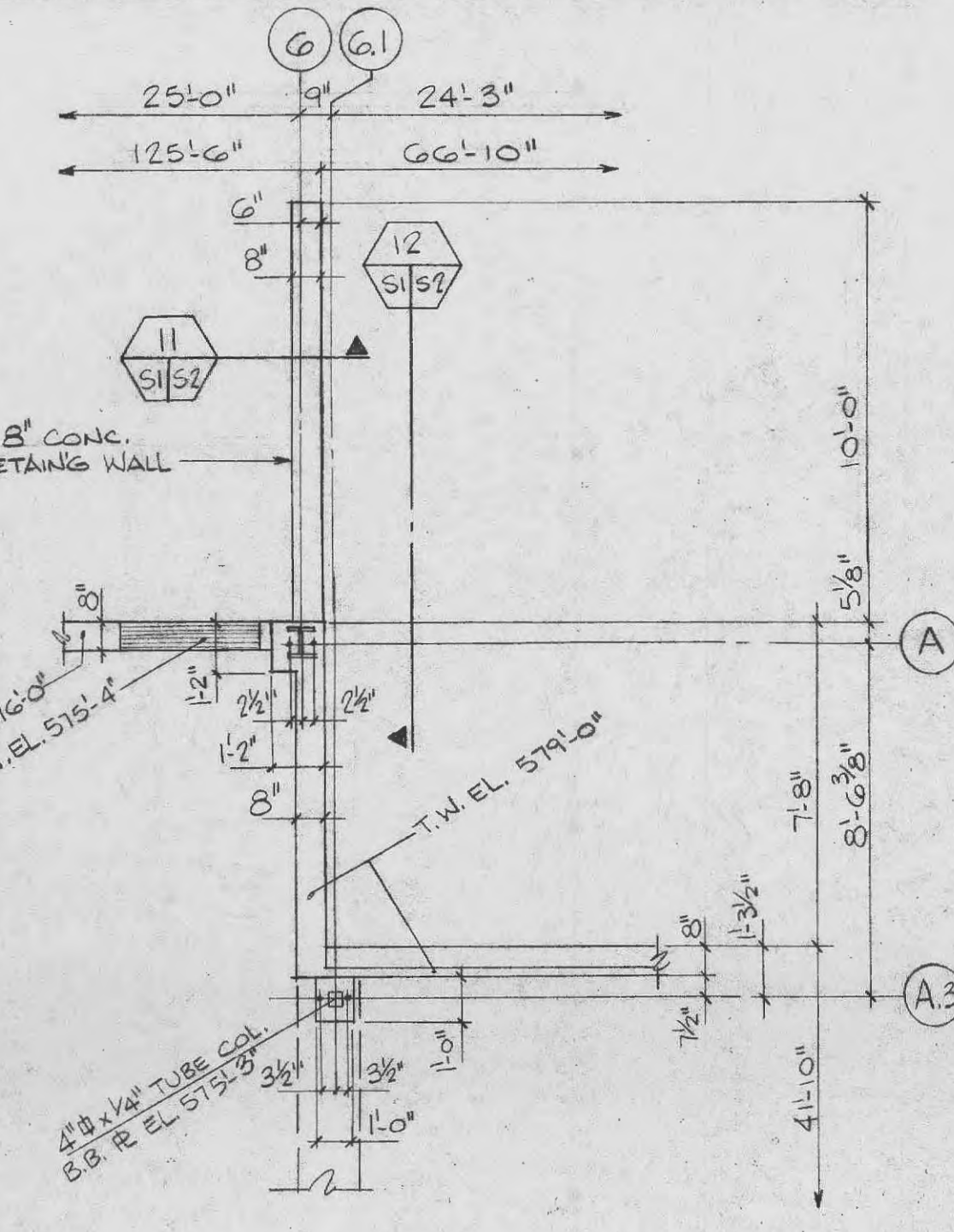
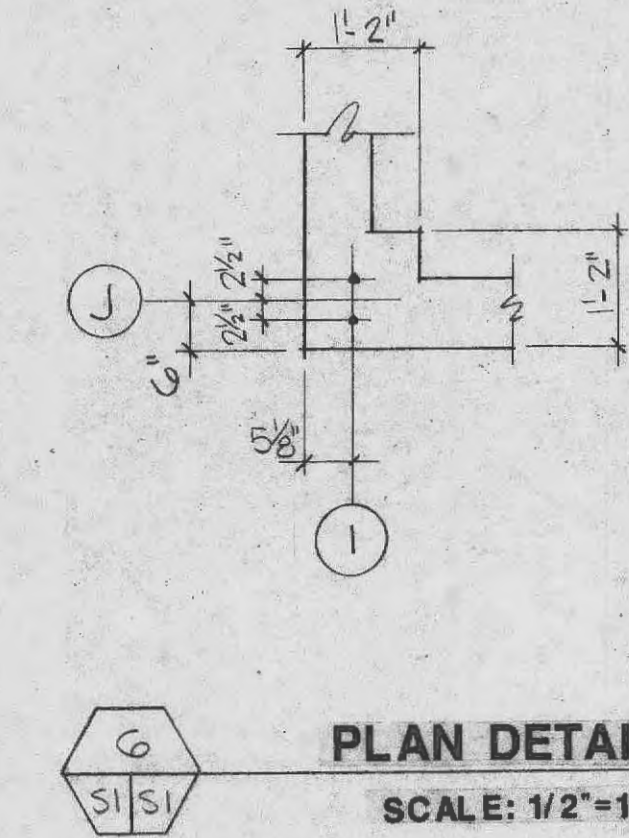
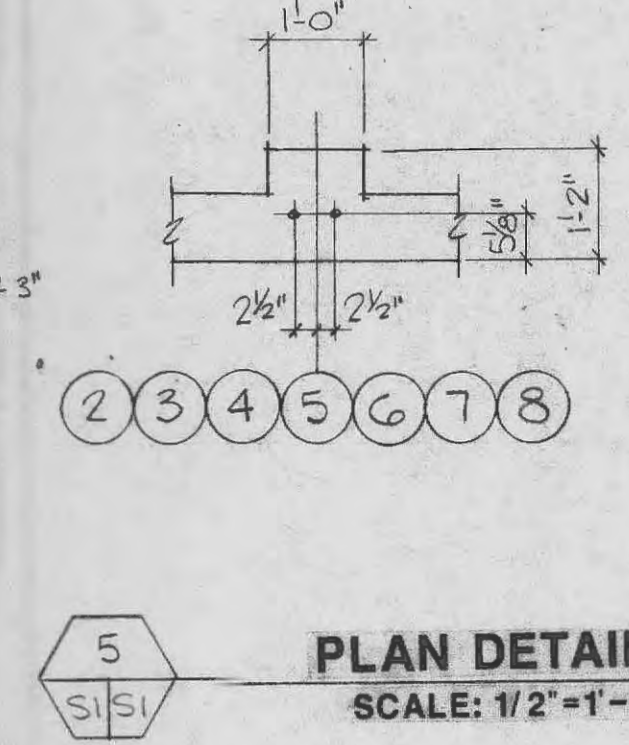
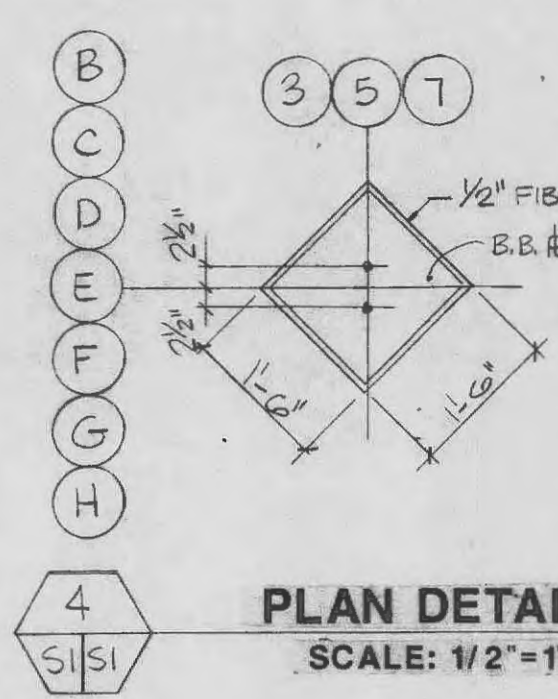
- This contractor shall cooperate with other trades and shall be responsible for the accurate placing of inserts, anchors, and other embedded items.
- Concrete shall be "plant-mixed" or "transit mixed" and furnished by competent established Ready-Mix concrete manufacturer. Their facilities shall be such that the proper mixing proportions can be attained. Accurate mixing time controlled and rate of delivery to the job site be sufficient to satisfy job requirements.
Cement shall be fortified cement ASTM-C-150 Type I. The brand of cement as approved shall be used throughout the job.
- Aggregate, both coarse and fine, shall be hard, durable, uncoated, crushed stone or gravel conforming to ASTM-C-33-GIT.
Mixing water shall be clean and free from injurious amounts of oil, acid, organic matter, alkalis, or other deleterious substances.
- Reinforcing bars shall be deformed in accordance with ASTM-A-305 and shall be billet steel in accordance with ASTM-A-615. Reinforcement shall be clean and free from rust, scale, or other coating that will reduce bond.
Welded wire fabric reinforcing shall ASTM-A-185 steel wire spot welded at intersections and of size indicated on the drawings.
Placing of reinforcing shall be in accordance with the recommendations of the Concrete Reinforcing Steel Institute. No splicing of reinforcing will be permitted at points of maximum stress.
- Place no concrete until reinforcing has been inspected and approved by the proper authority (Building Inspector, Engineer, etc.)
- Vapor barrier, where indicated on the drawings, shall be 4 mil polyethylene furnished in widest practical widths. Barrier shall be free of punctures and splice laps shall be a minimum of 12" and sealed with tape or mastic.
- Granular fill shall be crushed rock for leveling shown on the drawings and shall be compacted and levelled to proper grade.
- Concrete proportions: proportion aggregates to cement so that mixture can be readily worked into forms and around the reinforcement without segregation of materials or the collection of excess surface water. Except for concrete floors on grade. Strength of all concrete shall be a minimum 3,000 P.S.I. compressive, in 28 days. Slump range shall be 4" and maximum water per sack of cement shall be (6) six gallons. Minimum cement content per cubic yard of concrete shall be 5 1/2 sacks.
- Not Used
- Before placing concrete, all debris, water, ice, etc. shall be removed from the places to be occupied by the concrete. Forms shall be thoroughly wetted, except in freezing weather, or oiled, and the reinforcement cleaned of all foreign matter. Form work and the placement of sleeves, inserts, anchors, etc. shall be inspected before any concrete is deposited.
- The placing or depositing of all concrete shall be done in accordance with the requirements of the American Concrete Institute Building Code 518-77. Concrete shall be vibrated to assure close contact with surface of forms and reinforcement and shall be levelled off at proper grade to receive proper finish. No concrete that has partially hardened or is contaminated by foreign material shall be deposited in the work, nor shall be re-tempered concrete be used.
- Weather Conditions: Concrete, when deposited, shall have a temperature between 50° F and 85° F. In freezing weather suitable means shall be provided for maintaining the concrete at a temperature no lower than 70° F for four (4) days. Approved methods of heating the materials and protecting the concrete (using heated aggregate and or water) shall not exceed 90° F.
- The use of salt, chemicals, or other materials to prevent freezing will not be permitted. Protection and curing: protect concrete against frost and rapid drying and keep moist for at least six (6) days after placing. Concrete from which forms are removed within six (6) days after placing shall be sprayed during the curing period as frequently as drying conditions require. Cover cement finishes immediately after finishing and maintain a good condition until directed to remove this cover material. Loads shall be kept off curing concrete for at least six (6) days.
- The method and recommended practice as described in ACI standard 306R-78 for cold weather and 305R-77 for hot weather, for protecting and curing of concrete shall be followed.
- Concrete finish: Concrete floors shall have a uniform slope of 1/16" minimum per foot to floor drains and slumps. Dusting of floors slabs with dry materials preparatory to finishing will not be permitted.
- Tamp slabs to force large aggregate away from surface, wood float to require level so coarse aggregate will not be visible. After concrete is of sufficient hardness, steel trowel finish to a perfectly smooth surface free of debris.
- Exterior sidewalks to be finished with a broom nonskid surface.
- Control joints where indicated, shall be either tooled or sawn joints. Joints shall be 1/8" wide be 1/5th of slab thickness deep unless otherwise indicated on the drawings. PVC control joint formers are acceptable.

Clean-Up:
This subcontractor shall, upon completion of work under this section, remove all equipment, excess materials and debris caused by his work and leave the premises in a clean and acceptable condition.
- All main reinforcing bars shall have a minimum concrete cover of:
Footings----- 3"
Slabs----- 3/4"
Piers----- 3"
Walls----- 1 1/2" @ E.F. & 3" T & F



FOUNDATION PLAN
SCALE: 1/16"=1'-0"

FOOTING SCHEDULE		
MARK	SIZE	REINFORCING
A	7'-0" x 7'-0" x 1'-2"	4 # 5 E.W.
B	5'-0" x 5'-0" x 1'-0"	6 # 5 E.W.
C	4'-0" x 4'-0" x 1'-0"	7 # 4 E.W.
D	4'-0" x 4'-0" x 1'-0"	5 # 4 E.W.
E	3'-0" x 3'-0" x 1'-0"	4 # 4 E.W.
F	3'-0" x 3'-0" x 1'-0"	3 # 4 E.W.



NO	DESCRIPTION	DATE

REVISIONS

STRUCTURAL SYSTEMS, INC.
DESIGN CONTRACTORS
314-966-5920
818 South Kirkwood Road
St. Louis, Missouri 63122

TRUE FITNESS TECHNOLOGY

FOUNDATION PLAN

DRAWN: EP
CHECKED:
SCALE: AS NOTED
ISSUE DATE: MARCH 23, 1988
S.S.I. JOB NUMBER: 88-801m
DRAWING NUMBER

S-1 OF 3