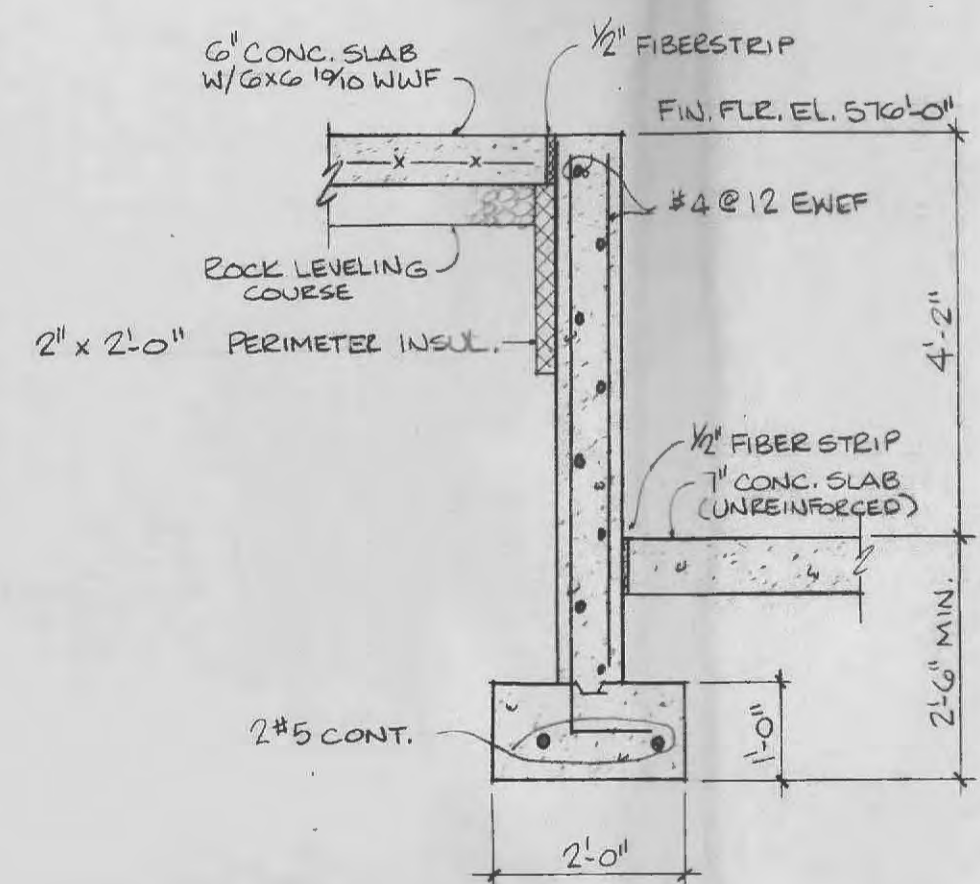
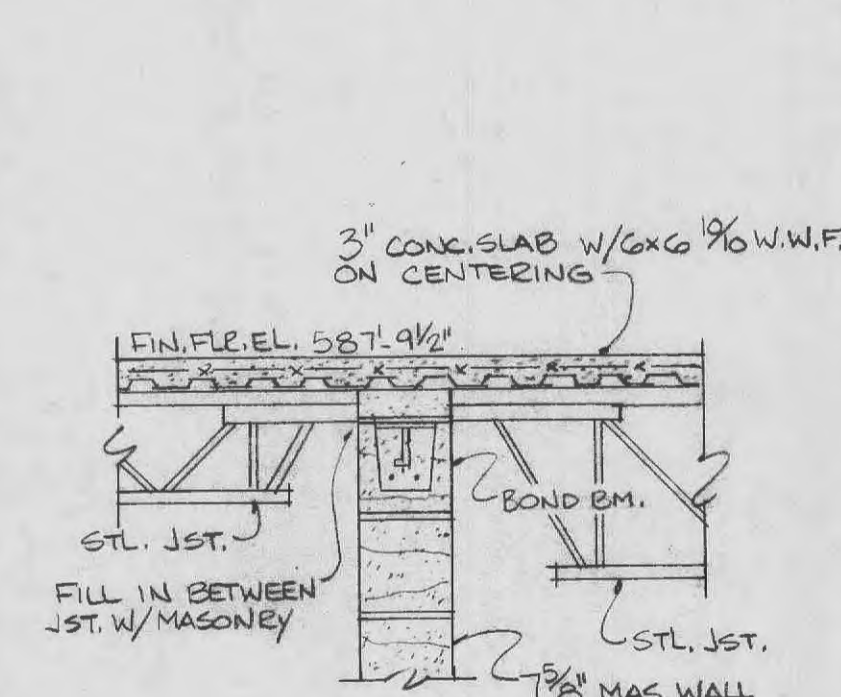


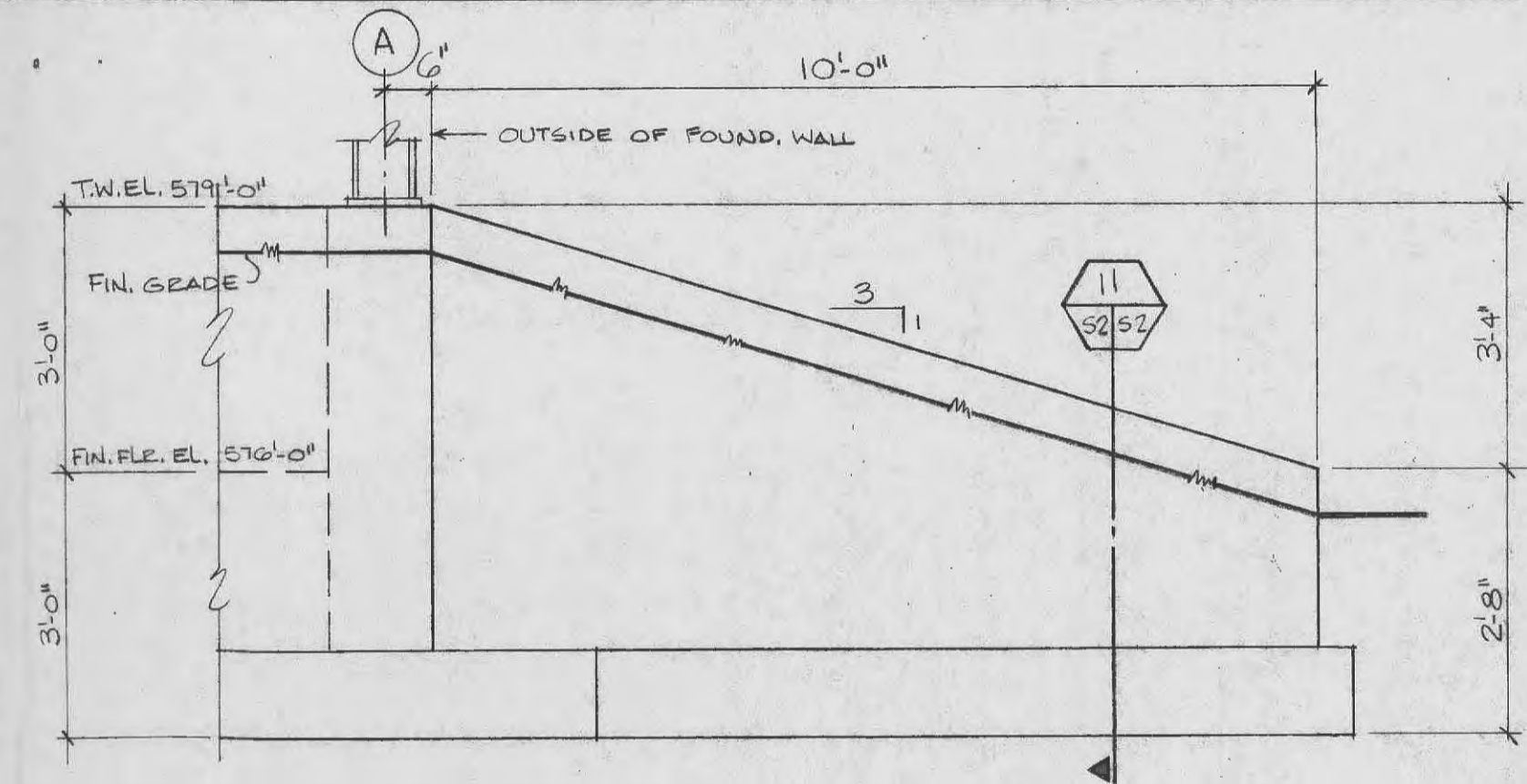
**1 EXTERIOR WALL DETAIL**  
SCALE: 1/2"=1'-0"



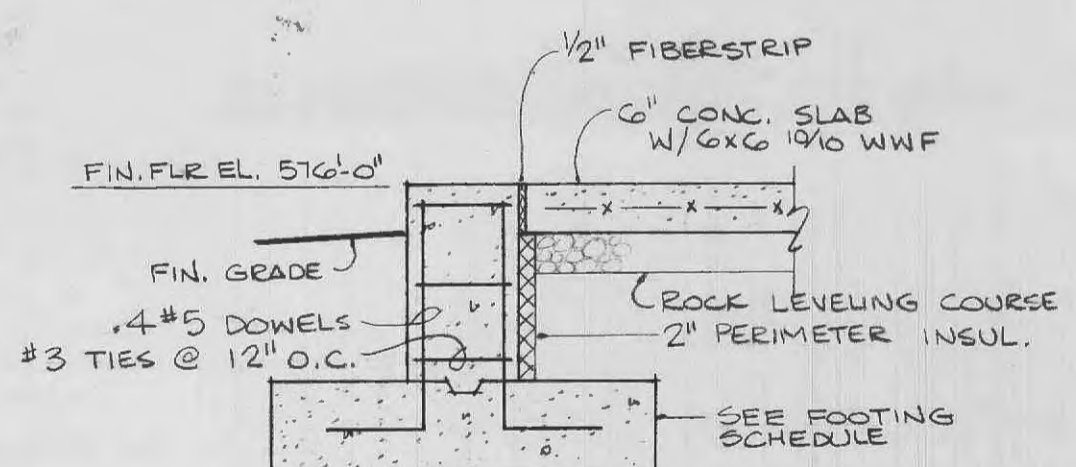
**5 SECTION @ DOCK WALL**  
SCALE: 1/2"=1'-0"



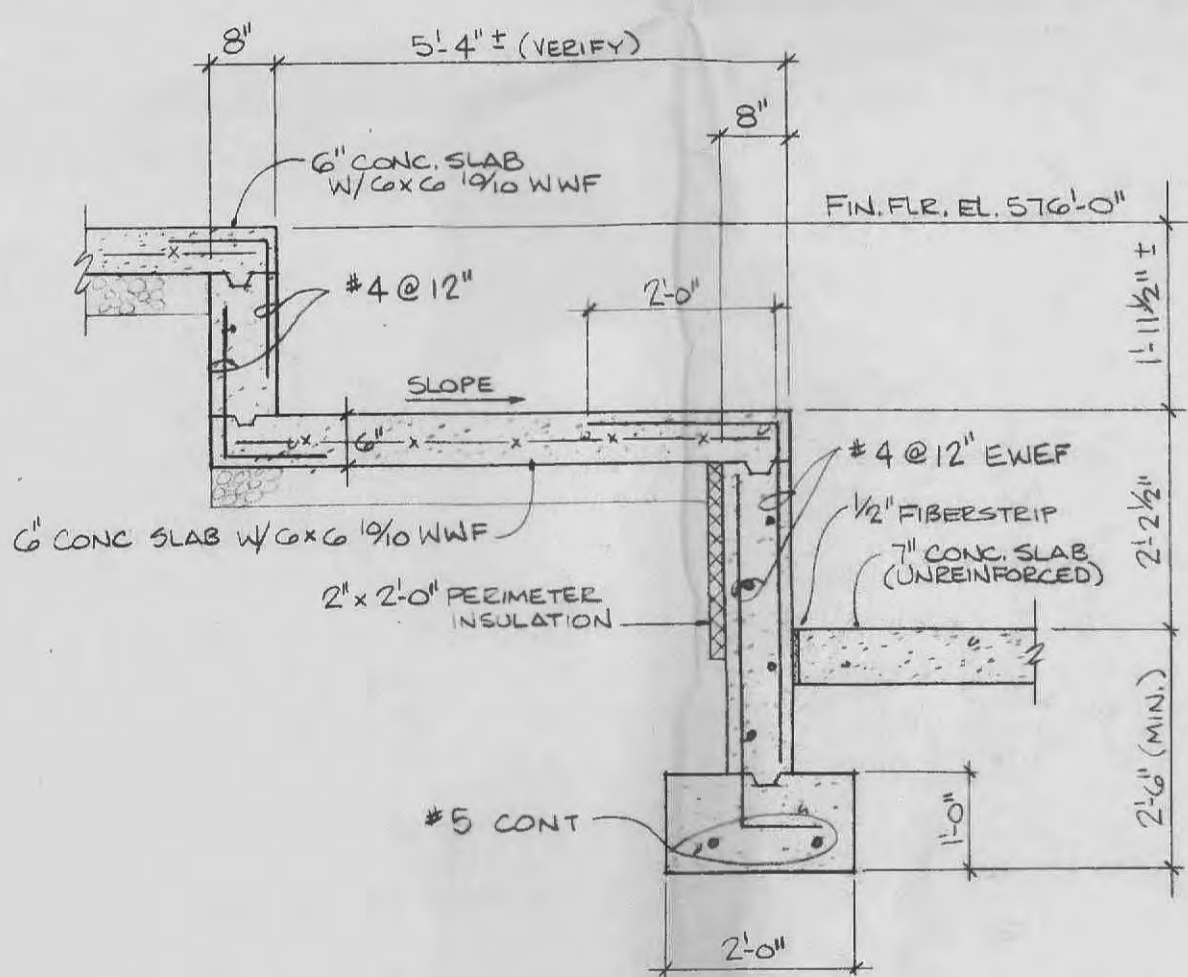
**9 DETAIL @ CONC. SLAB**  
SCALE: 1/2"=1'-0"



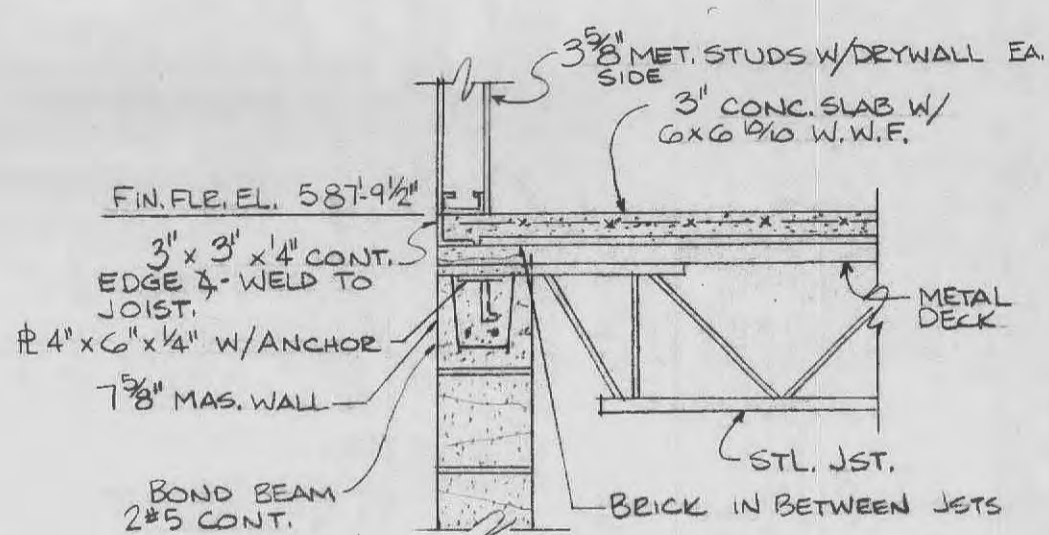
**12 SECTION @ CONC. RETAIN'G WALL**  
SCALE: 1/2"=1'-0"



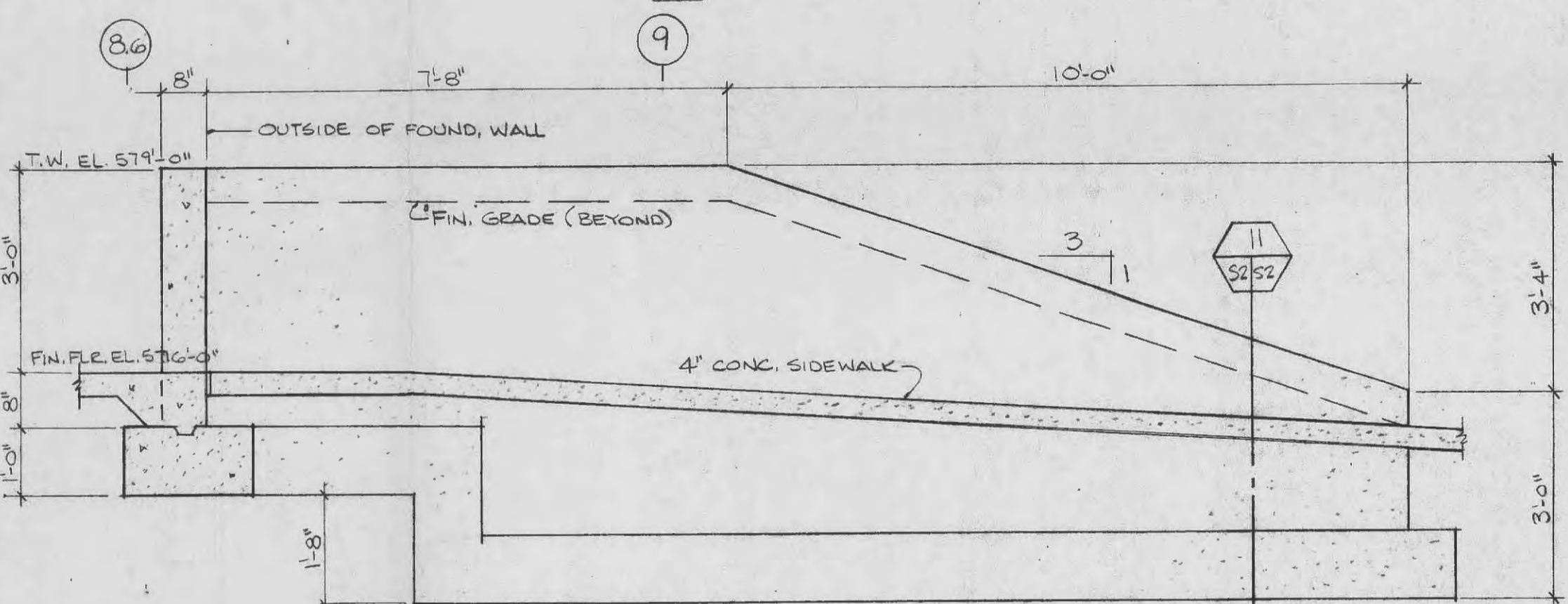
**2 TYPICAL PIER DETAIL**  
SCALE: 1/2"=1'-0"



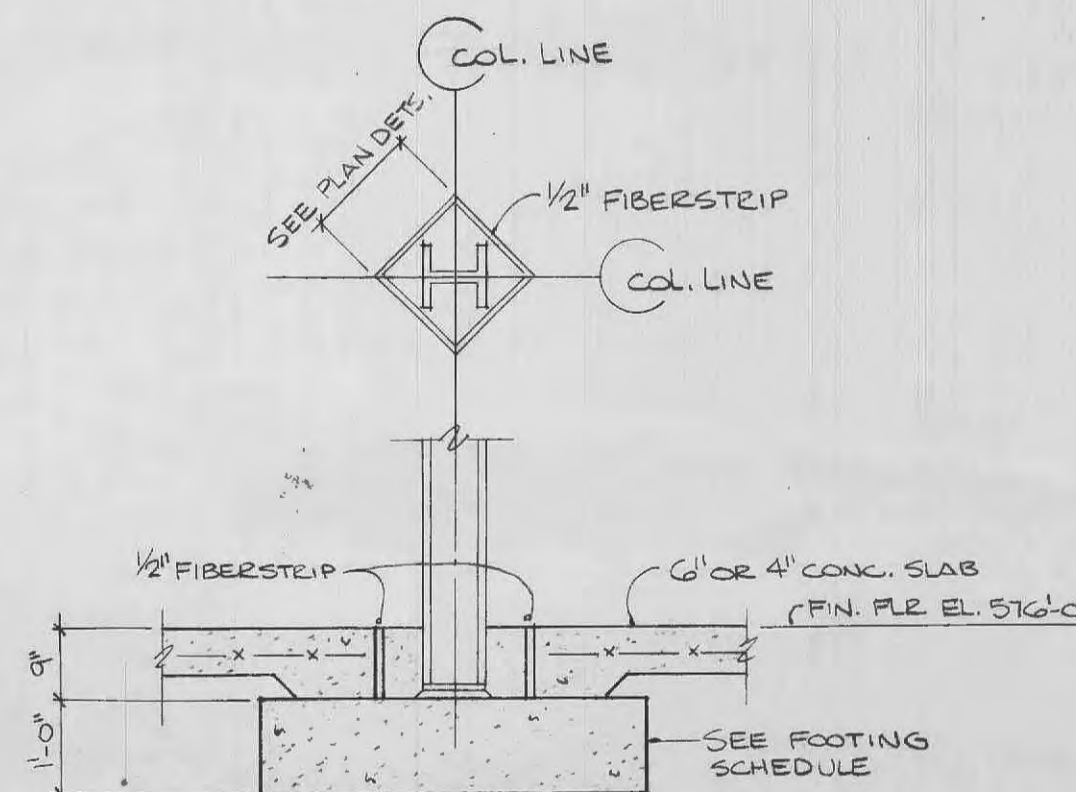
**6 SECTION @ DOCK LEVELER**  
SCALE: 1/2"=1'-0"



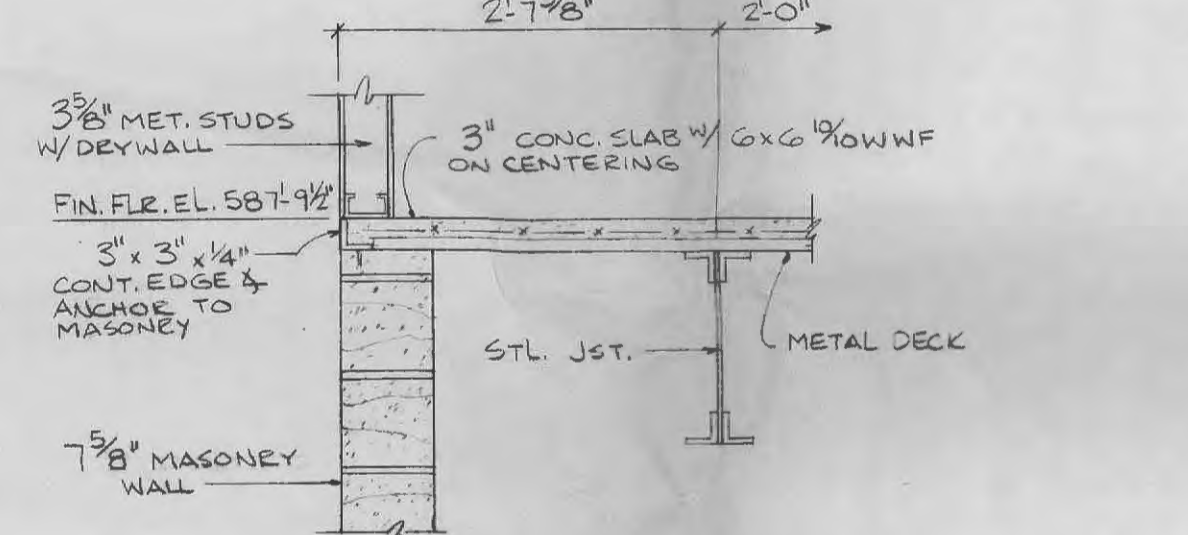
**10 DETAIL @ EDGE ANGLE**  
SCALE: 1/2"=1'-0"



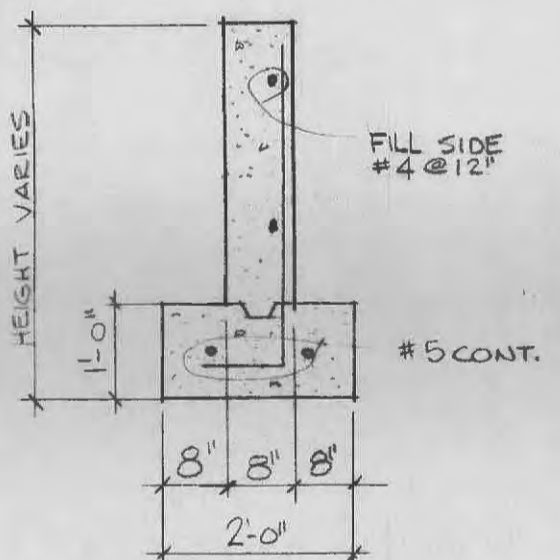
**13 SECTION @ CONC. RETAIN'G WALL**  
SCALE: 1/2"=1'-0"



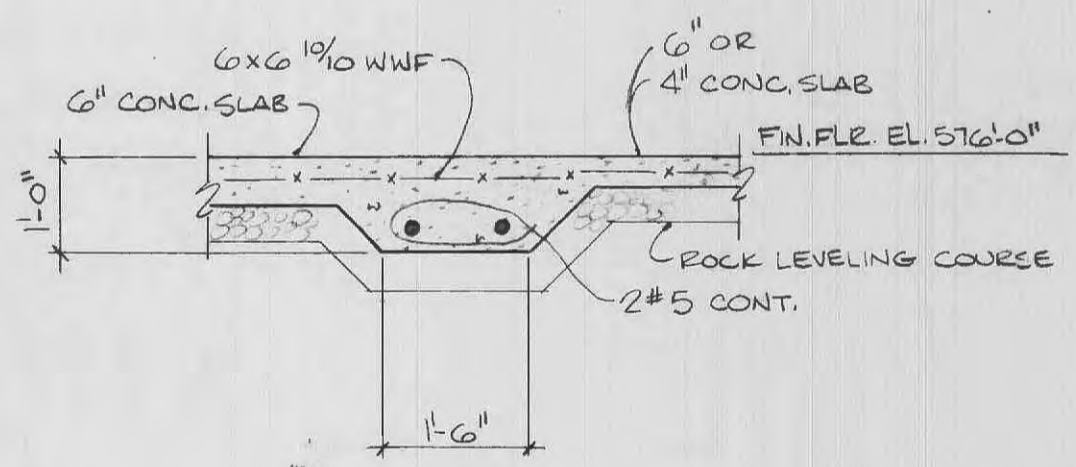
**3 INTERIOR COL. DETAIL**  
SCALE: 1/2"=1'-0"



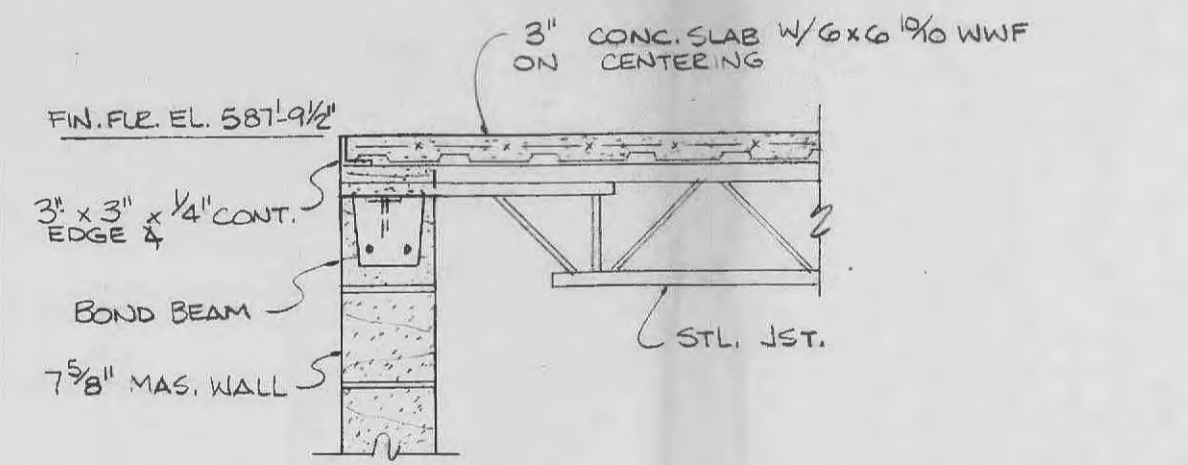
**7 DETAIL @ EDGE ANGLE**  
SCALE: 1/2"=1'-0"



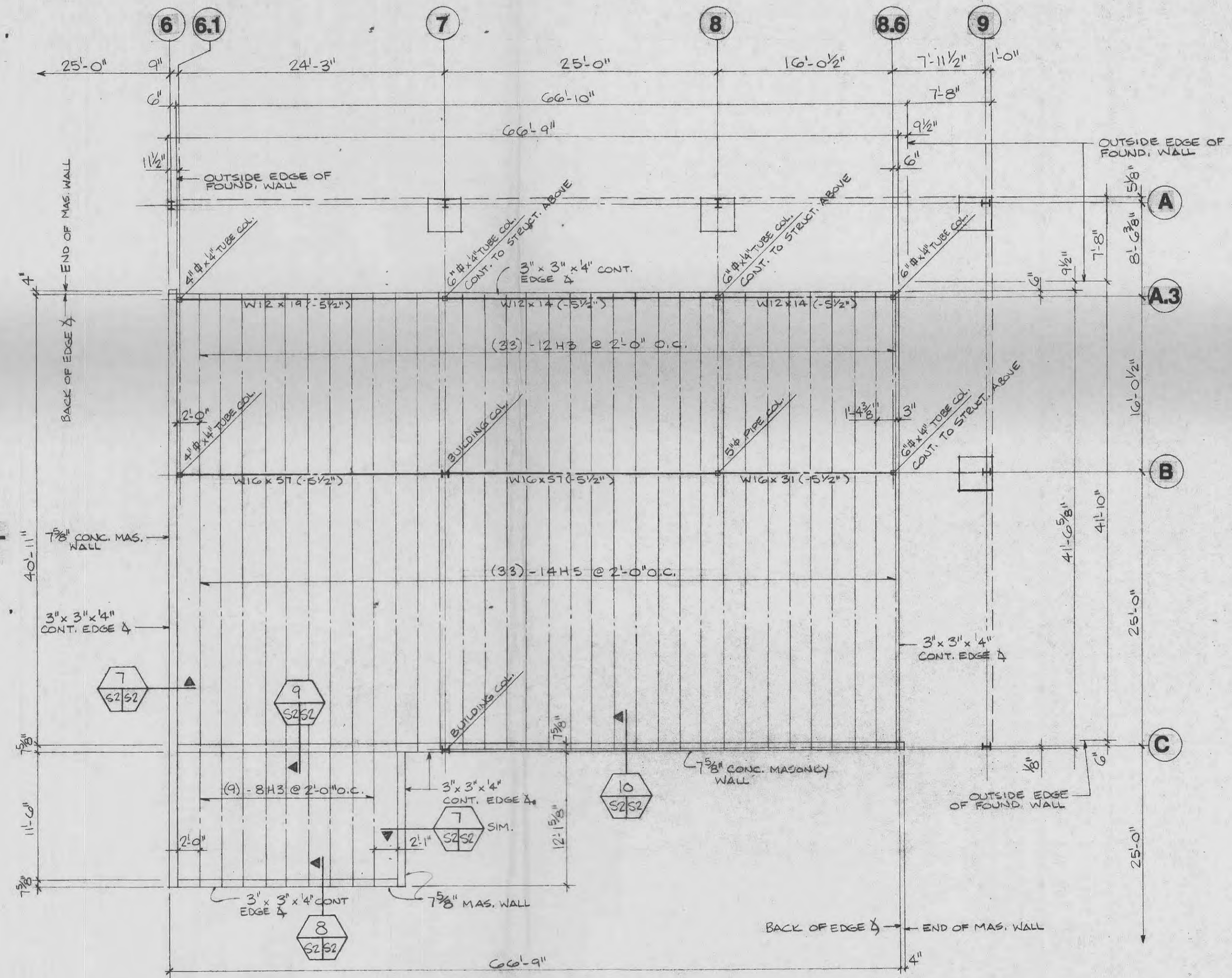
**11 SECT. THRU RETAIN'G WALL**  
SCALE: 1/2"=1'-0"



**4 THICKENED SLAB DETAIL**  
SCALE: 1/2"=1'-0"



**8 DETAIL @ EDGE ANGLE**  
SCALE: 1/2"=1'-0"



**MEZZANINE FRAMING PLAN**  
SCALE: 1/8"=1'-0"  
STEEL REFERENCED FROM FIN. FLE. EL. 587-9/16"

NO.	DESCRIPTION	DATE
REVISIONS		



**STRUCTURAL SYSTEMS, INC.**  
DESIGN CONTRACTORS  
314-966-5920  
814 South Kirkwood Road, St. Louis, Missouri 63122

**TRUE FITNESS TECHNOLOGY**

**DETAILS**  
**MEZZ. FRAMING PLAN**

DRAWN: EP  
CHECKED:  
SCALE: AS NOTED  
ISSUE DATE: MARCH 23, 1988  
S.S.I. JOB NUMBER: 88-B01m  
DRAWING NUMBER