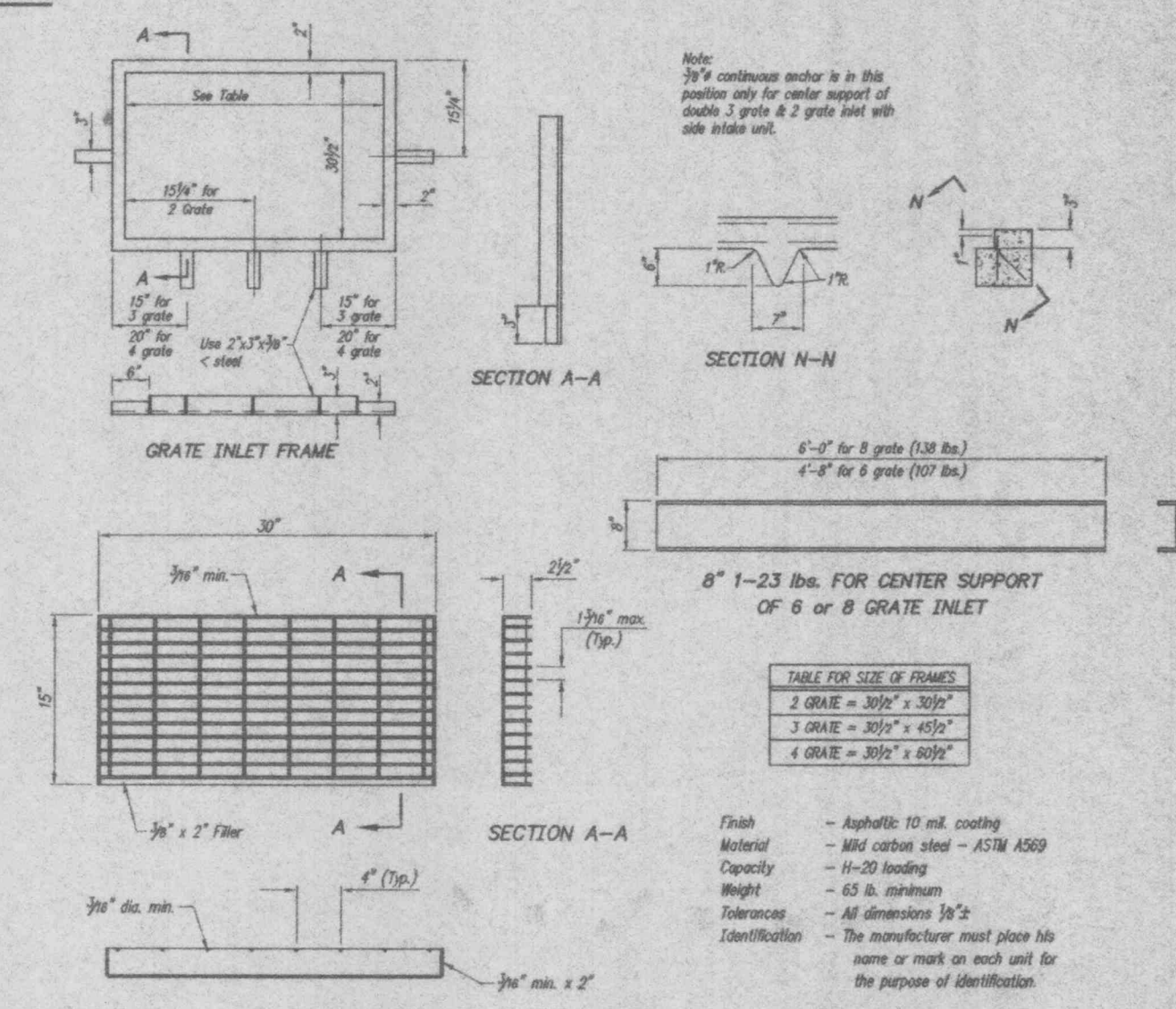
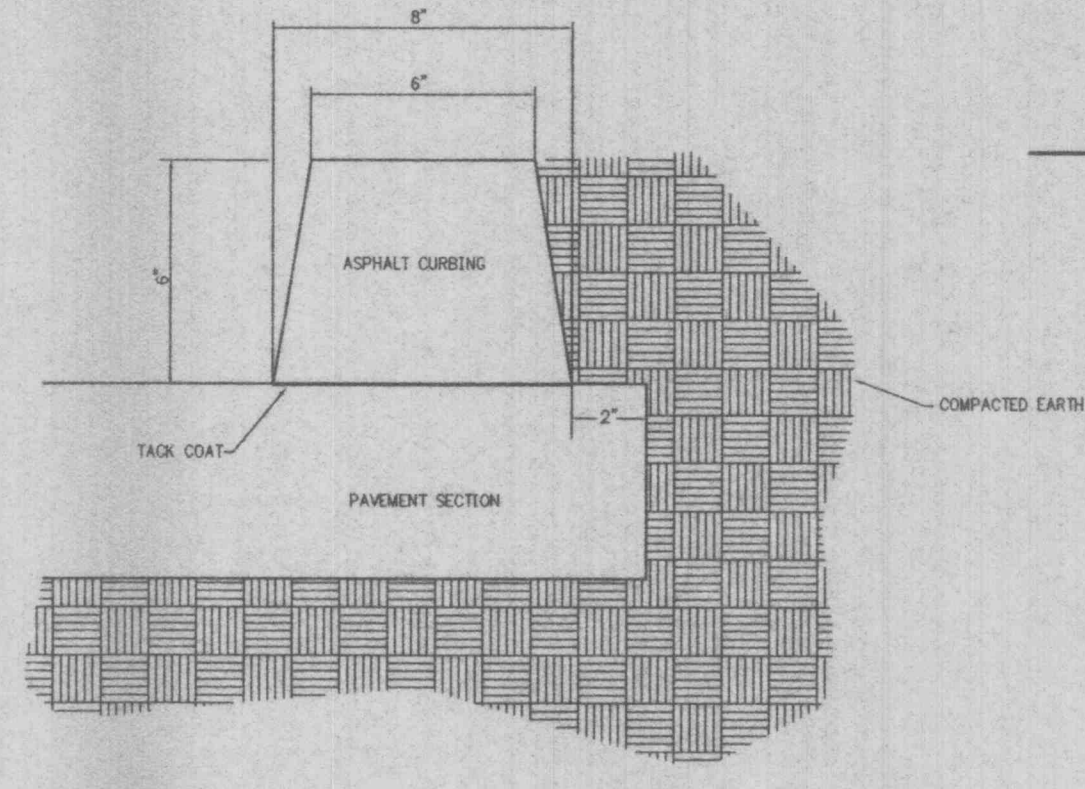
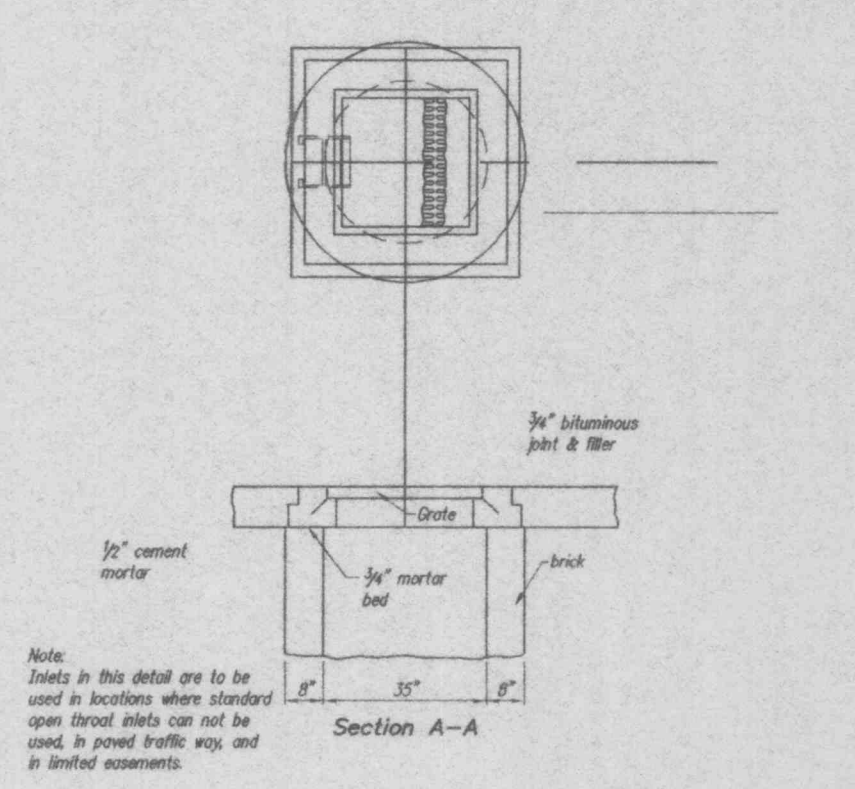
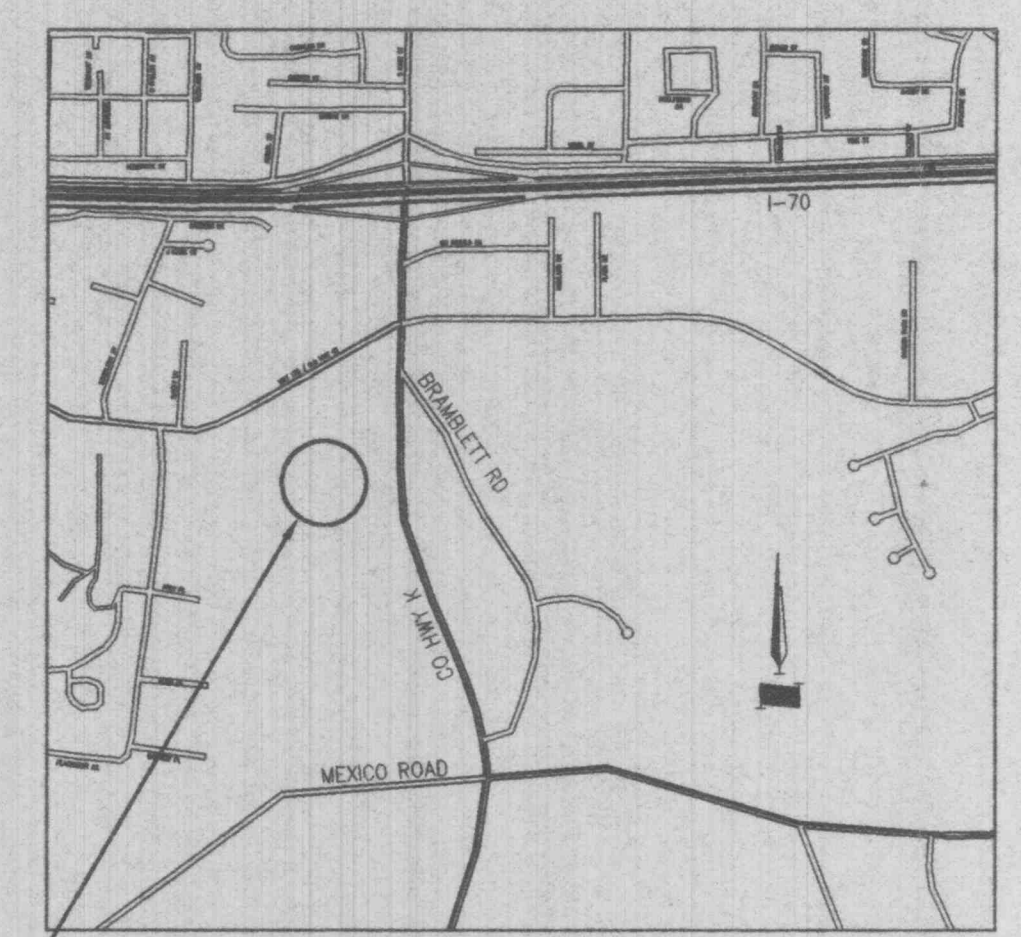
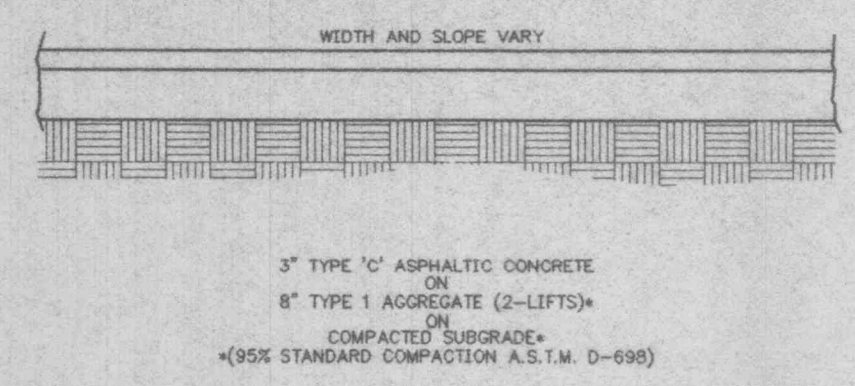


GBA
 GEORGE BUTLER ASSOCIATES, INC.
 Engineers / Architects
 Kansas City, Mo. / Lenexa, Ks. / O'Fallon, Mo. / Wichita, Ks.

**TRUE VALUE HARDWARE
 PARKING LOT ADDITION**

EXISTING UNDERGROUND OVERHEAD UTILITIES AND DRAINAGE STRUCTURES HAVE BEEN PLOTTED FROM AVAILABLE INFORMATION AND THEREFORE, THEIR LOCATIONS MUST BE CONSIDERED APPROXIMATE ONLY. IT IS THE RESPONSIBILITY OF THE INDIVIDUAL CONTRACTORS TO NOTIFY THE UTILITY COMPANIES BEFORE ACTUAL CONSTRUCTION.



PROJECT LOCATION
 OWNER: TRUE VALUE HARDWARE
 921 HIGHWAY "K"
 O'FALLON, MO 63366

NOTES: ANY ADDITIONAL DEVELOPMENT WILL REQUIRE ADDITIONAL DETENTION
 NO ADDITIONAL LIGHTING IS PROPOSED
 PLACE TWO 2" DIA. TREES IN THE SOUTHWESTERMOST PARKING ISLAND AS SHOWN

INTERIOR LANDSCAPING REQUIREMENTS
 AREA OF PROPOSED ASPHALT: 4092.63 SF
 INTERIOR LANDSCAPING REQUIRED:
 4092.63 SF x 0.06 = 254.56 SF
 INTERIOR LANDSCAPING PROVIDED: 260.4 SF

