

VEGETATIVE ESTABLISHMENT  
FOR URBAN DEVELOPMENT SITES

APPENDIX A

SEEDING RATES  
Permanent:  
Tall Fescue - 30 lbs./ac.  
Smooth Brome - 20 lbs./ac.  
Combined Fescue/Brome - 15 lbs./ac. and Brome@10 lbs./ac.  
Temporary:  
Wheat or Rye - 150 lbs./ac. (3.5 lbs. per 1000 sq. ft.)  
Oats - 120 lbs./ac. (2.75 lbs. per 1000 sq. ft.)  
SEEDING PERIODS  
Fescue or Brome March 1 to June 1  
Wheat or Rye August 1 to October 1  
Oats March 15 to November 1  
MULCH RATES 100 lbs. per 1000 sq.ft. (4,356 lbs. per acre)  
FERTILIZER RATES Nitrogen 30 lbs./ac.  
Phosphate 30 lbs./ac.  
Potassium 30 lbs./ac.  
Lime 600 lbs./ac. ENM\*

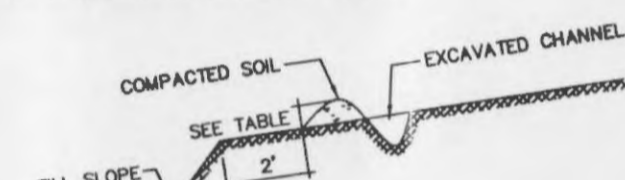
\*ENM = effective neutralizing material as per State evaluation of quarried rock.

DIVERSIONS  
FOR URBAN DEVELOPMENT SITES

APPENDIX B

\*\* Outlets for diversions must be stable. Stable outlets consist of grass waterways, earthen channels with capacity adequate to prevent gully erosion, grade stabilization structures or other practices as approved by the Designated Official.

Combination Diversion  
Used at the top of a fill slope.



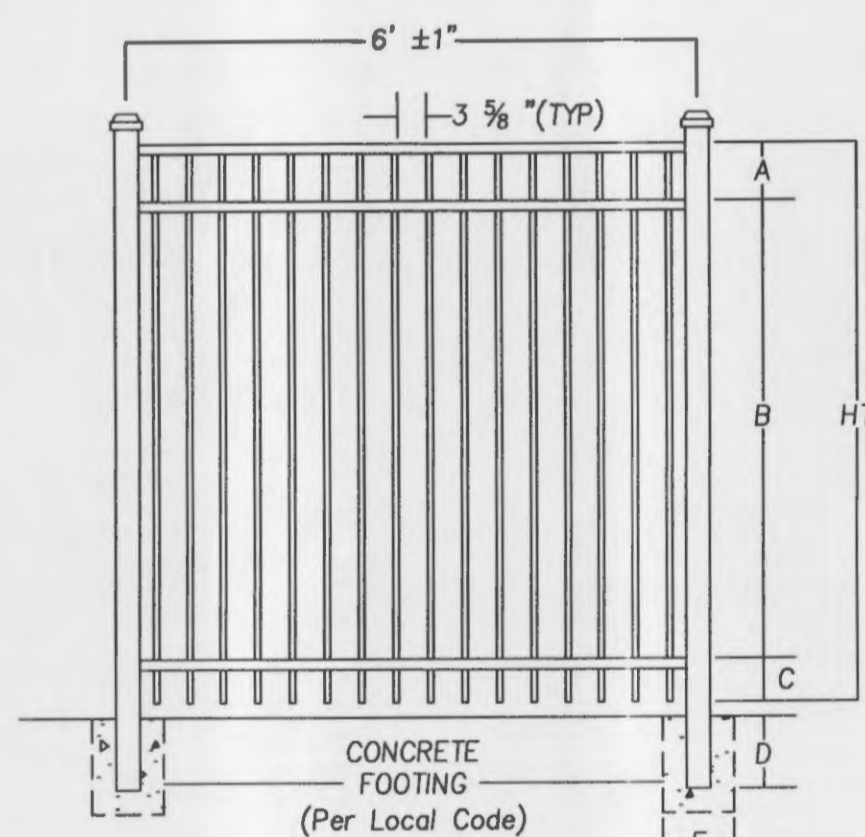
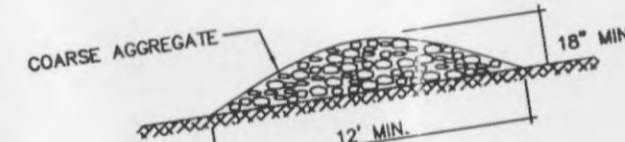
Earth Ridge Diversion  
Used around the perimeter of a construction site.



Combination Diversion  
General use.



Gravel Ridge Diversion  
General use.



NOTE: COORDINATE FENCE LOCATION WITH RETAINING WALL DESIGN BY OTHERS - SEE SEPARATE PLANS.

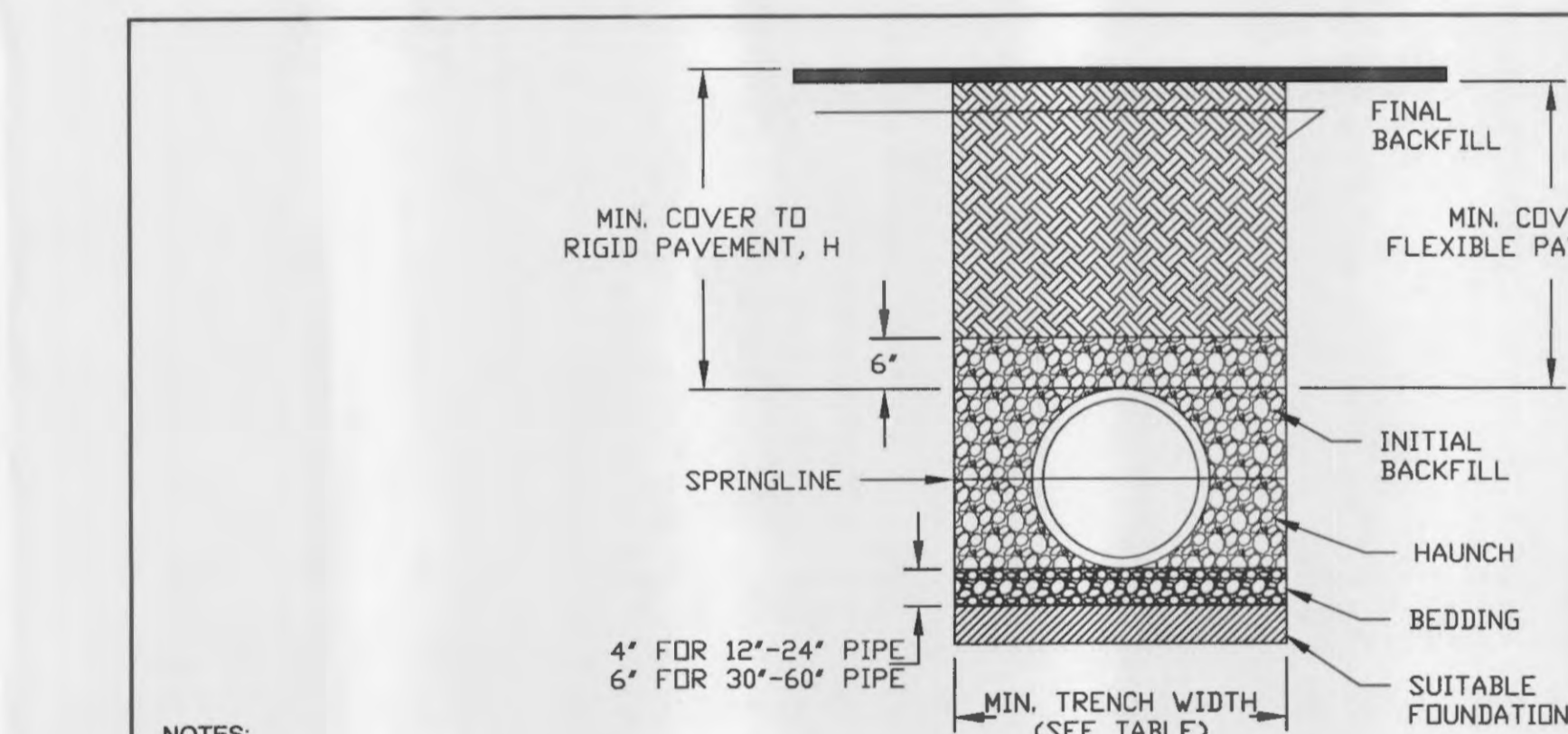
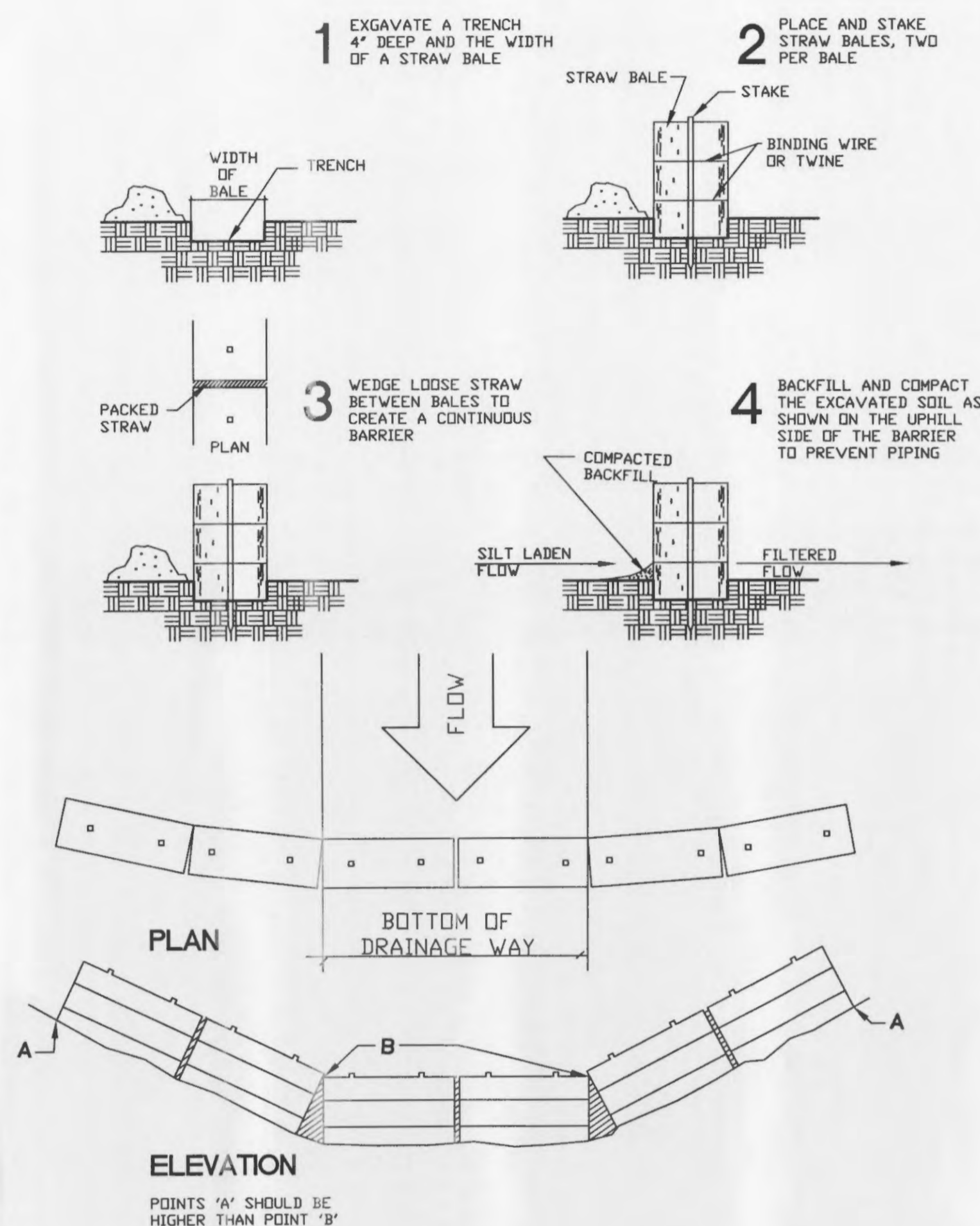
HT	A	B	C	D	E
6"	6"	60 1/2"	5 1/2"	36"	8"

POSTS: 2 1/2" X 2 1/2" X .100 WALL  
HORIZONTAL RAILS: 1 3/8" X 1 1/4"  
SIDE WALLS: .085"  
TOP WALLS: .065"  
PICKETS: 3/4" X 3/4" X .055 WALL

ALUMINUM FENCE DETAIL

STRAW BALE BARRIERS  
FOR URBAN DEVELOPMENT SITES

APPENDIX C



NOTES:

- ALL PIPE SYSTEMS SHALL BE INSTALLED IN ACCORDANCE WITH ASTM D2321, "STANDARD PRACTICE FOR UNDERGROUND INSTALLATION OF THERMOPLASTIC PIPE FOR SEWERS AND OTHER GRAVITY FLOW APPLICATIONS", LATEST EDITION.
- MEASURES SHOULD BE TAKEN TO PREVENT MIGRATION OF NATIVE FINES INTO BACKFILL MATERIAL, WHEN REQUIRED.
- FOUNDATION: WHERE THE TRENCH BOTTOM IS UNSTABLE, THE CONTRACTOR SHALL EXCAVATE TO A DEPTH REQUIRED BY THE ENGINEER AND REPLACE WITH SUITABLE MATERIAL AS SPECIFIED BY THE ENGINEER. AS AN ALTERNATIVE AND AT THE DISCRETION OF THE DESIGN ENGINEER, THE TRENCH BOTTOM MAY BE STABILIZED USING A GEOTEXTILE MATERIAL.
- BEDDING: SUITABLE MATERIAL SHALL BE CLASS I, II OR III. THE CONTRACTOR SHALL PROVIDE DOCUMENTATION FOR MATERIAL SPECIFICATION TO ENGINEER, UNLESS OTHERWISE NOTED BY THE ENGINEER. MINIMUM BEDDING THICKNESS SHALL BE 4" (100mm) FOR 4"-24" (100mm-600mm); 6" (150mm) FOR 30"-60" (750mm-900mm).
- INITIAL BACKFILL: SUITABLE MATERIAL SHALL BE CLASS I, II OR III IN THE PIPE ZONE EXTENDING NOT LESS THAN 6" ABOVE CROWN OF PIPE. THE CONTRACTOR SHALL PROVIDE DOCUMENTATION FOR MATERIAL SPECIFICATION TO ENGINEER. MATERIAL SHALL BE INSTALLED AS REQUIRED IN ASTM D2321, LATEST EDITION.
- MINIMUM COVER: MINIMUM COVER, H, IN NON-TRAFFIC APPLICATIONS (GRASS OR LANDSCAPE AREAS) IS 12" FROM THE TOP OF PIPE TO GROUND SURFACE. ADDITIONAL COVER MAY BE REQUIRED TO PREVENT FLOATION. FOR TRAFFIC APPLICATIONS, MINIMUM COVER, H, IS 12" UP TO 48" DIAMETER PIPE AND 24" OF COVER FOR 54"-60" DIAMETER PIPE, MEASURED FROM TOP OF PIPE TO BOTTOM OF FLEXIBLE PAVEMENT OR TO TOP OF RIGID PAVEMENT.

© 2007 ADS, INC.

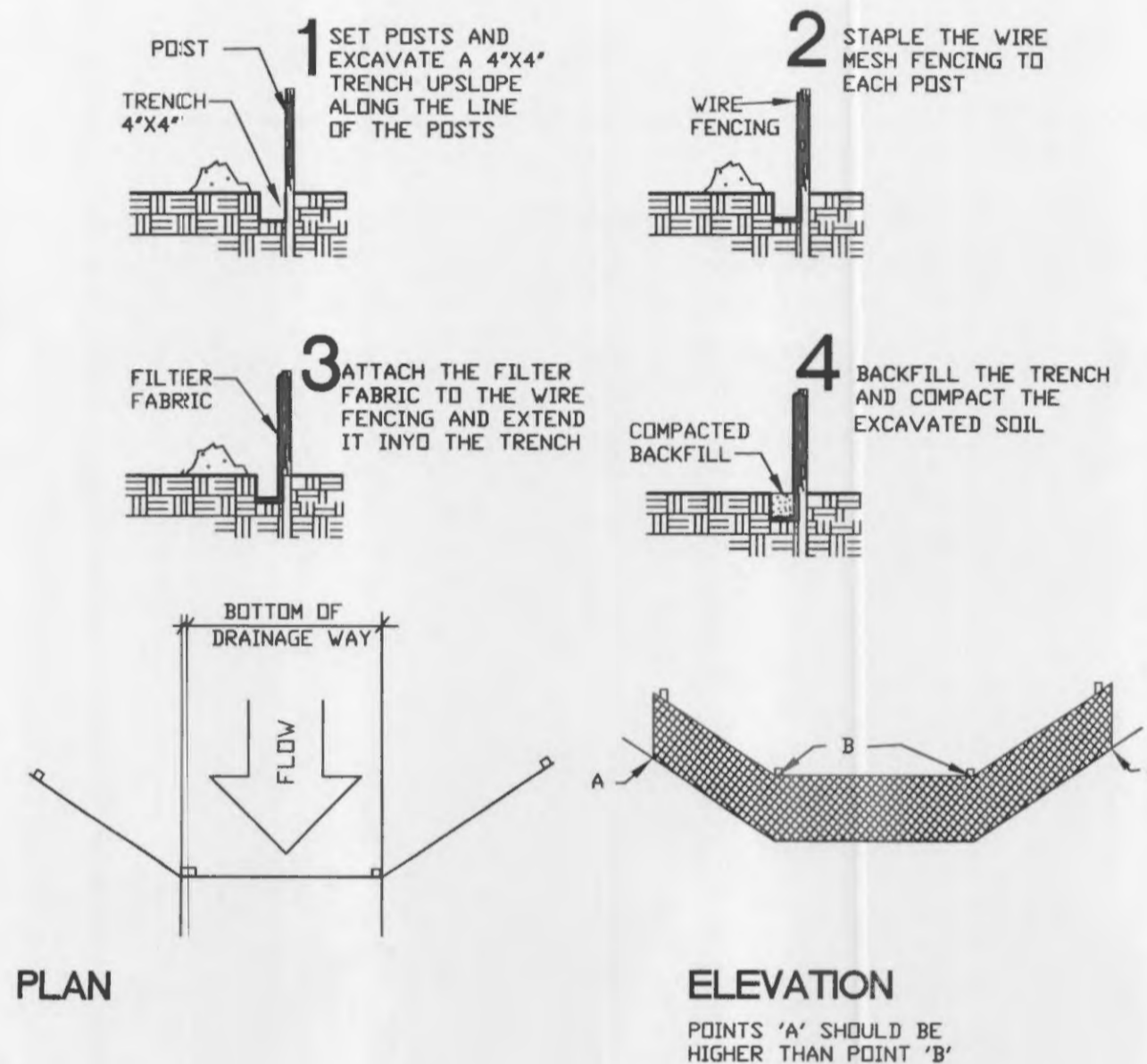
ADVANCED DRAINAGE SYSTEMS, INC. (ADS) HAS PREPARED THIS DETAIL BASED ON INFORMATION PROVIDED TO ADS. THIS DRAWING IS INTENDED TO DEPICT THE COMPONENTS AS REQUESTED. ADS HAS NOT PERFORMED ANY ENGINEERING OR DESIGN SERVICES FOR THIS PROJECT, NOR HAS ADS INDEPENDENTLY VERIFIED THE INFORMATION SUPPLIED. THE INSTALLATION DETAILS PROVIDED HEREIN ARE GENERAL RECOMMENDATIONS AND ARE NOT SPECIFIC FOR THIS PROJECT. THE DESIGN ENGINEER SHALL REVIEW THESE DETAILS PRIOR TO CONSTRUCTION. IT IS THE DESIGN ENGINEER'S RESPONSIBILITY TO ENSURE THE DETAILS PROVIDED HEREIN MEETS OR EXCEEDS THE APPLICABLE NATIONAL, STATE, OR LOCAL REQUIREMENTS AND TO ENSURE THAT THE DETAILS PROVIDED HEREIN ARE ACCEPTABLE FOR THIS PROJECT.

SYNTHETIC FILTER BARRIERS  
FOR URBAN DEVELOPMENT SITES

APPENDIX D

MAINTENANCE

- Filter barriers shall be inspected immediately after each rainfall and at least daily during prolonged rainfall. Any required repairs shall be made immediately.
- Sediment deposits should be removed after each storm event. They must be removed when deposits reach approximately half the height of the barrier.
- Should the fabric decompose or become ineffective prior to the end of the expected useful life and the barrier still be necessary, longer required shall be dressed to conform with the existing grade, prepared and seeded. The fabric shall be replaced promptly.
- Any sediment deposits remaining in place after the silt fence or filter barrier is no longer required shall be dressed to conform with the existing grade, prepared and seeded.



PLAN

ELEVATION

POINTS 'A' SHOULD BE HIGHER THAN POINT 'B'

RECOMMENDED MINIMUM TRENCH WIDTHS

PIPE DIAM.	MIN. TRENCH WIDTH
4"	21"
6"	23"
8"	26"
10"	28"
12"	30"
15"	34"
18"	39"
24"	48"
30"	56"
36"	64"
42"	72"
48"	80"
54"	88"
60"	96"

MINIMUM RECOMMENDED COVER BASED ON VEHICLE LOADING CONDITIONS

PIPE DIAM.	SURFACE LIVE LOADING CONDITION	
	H-25	HEAVY CONSTRUCTION (75T AXLE LOAD) *
12" - 48"	12"	48"
54" - 60"	24"	60"

\* VEHICLES IN EXCESS OF 75T MAY REQUIRE ADDITIONAL COVER

MINIMUM RECOMMENDED COVER BASED ON RAILWAY LOADING CONDITIONS

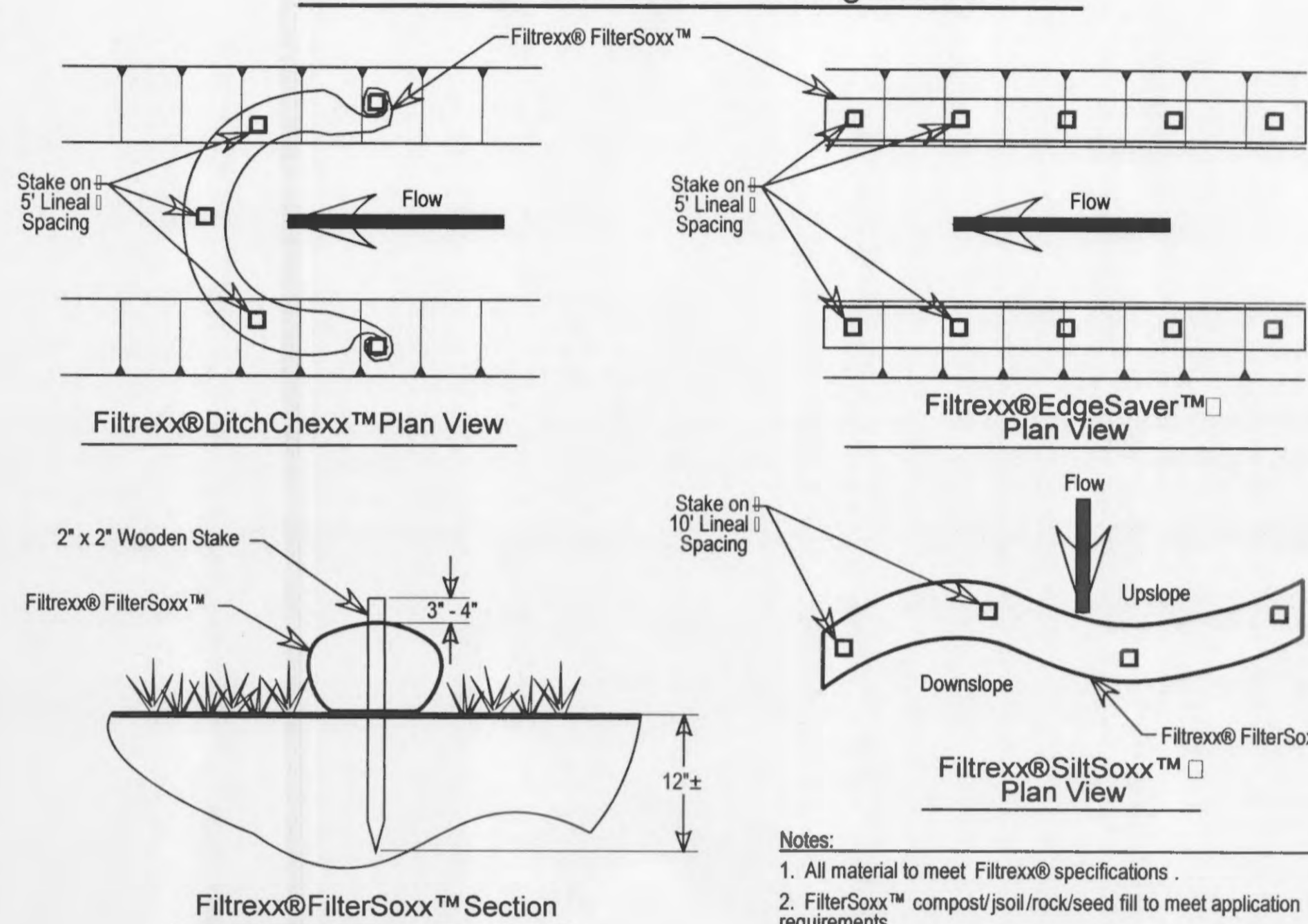
PIPE DIAM.	COOPER E-80**
UP TO 24"	24"
30"-36"	36"
42"-60"	48"

\*\* COVER IS MEASURED FROM TOP OF PIPE TO BOTTOM OF RAILWAY TIE.  
\*\*\* E-80 COVER REQUIREMENTS, ARE ONLY APPLICABLE TO ASTM F 2306 PIPE.

REV.	ADDED E-80 INFORMATION	TJR	08/20/07	BY	MM/DD/YY	CHK'D
2						

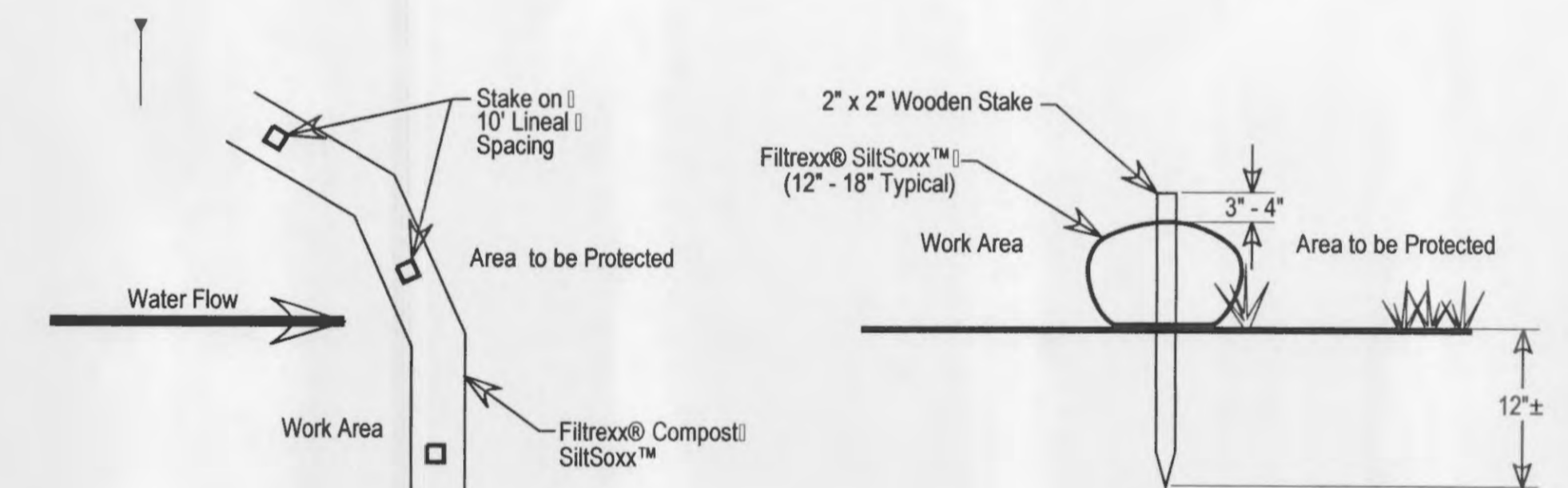
TYPICAL TRENCH DETAIL  
DRAWING NUMBER: STD-1101  
ADS 4640 TRULEMAN BLVD HILLIARD, OHIO 43026  
CKS 10/18/06  
NTS  
1 OF 1

Filtrex® FilterSoxx™ Staking Details



- Notes:
- All material to meet Filtrex® specifications.
  - FilterSoxx™ compost/soil/rock/seed fill to meet application requirements.
  - Compost material to be dispersed on site, as determined by Engineer.

Filtrex® SiltSoxx™ Details



- Notes:
- All material to meet Filtrex® specifications.
  - SiltSoxx™ compost/soil/rock/seed fill to meet application requirements.
  - SiltSoxx™ depicted is for minimum slopes. Greater slopes may require larger socks per the Engineer.
  - Compost material to be dispersed on site, as determined by Engineer.

