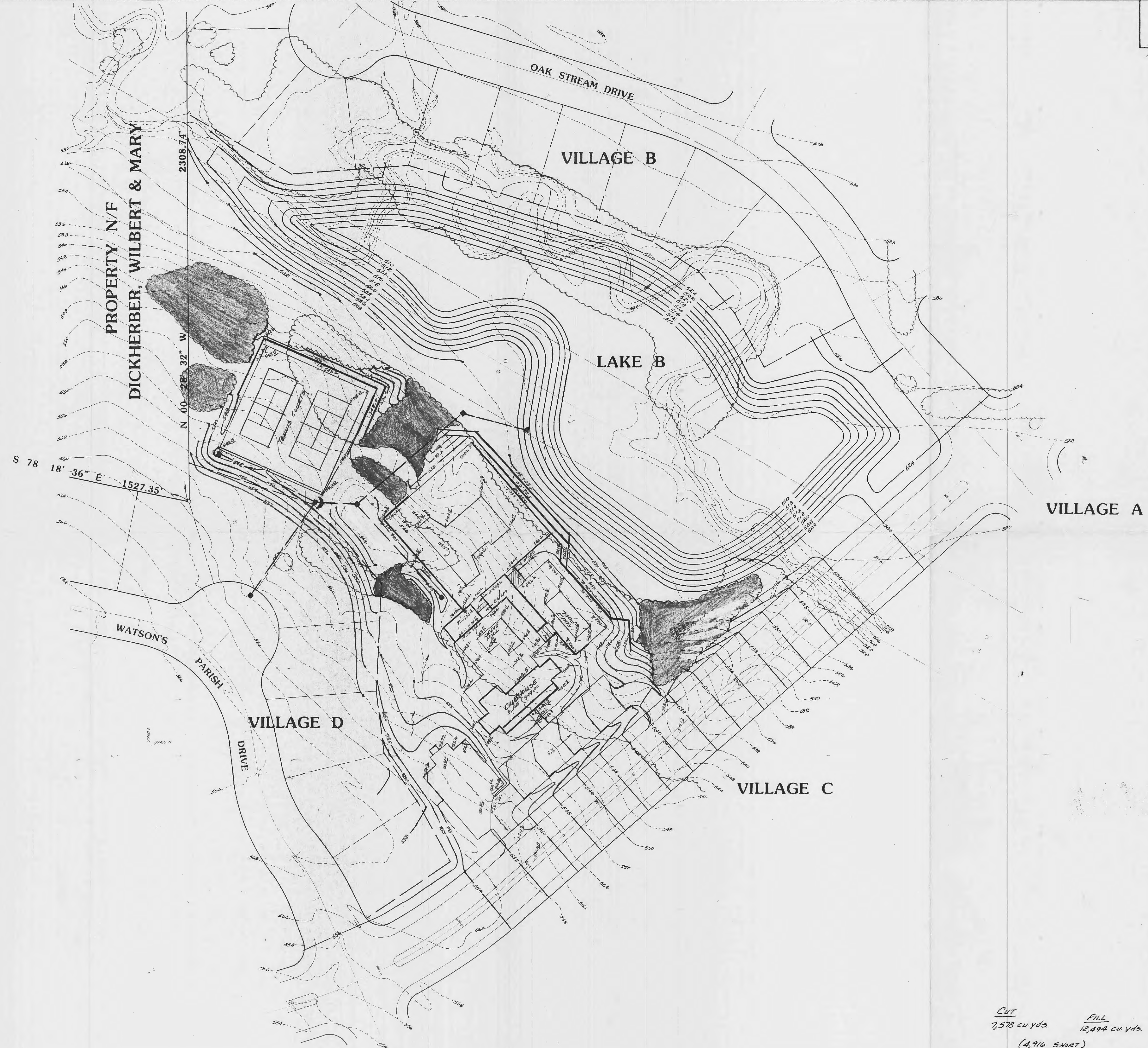




Scale: 1" = 50'



**NOTE:**  
 Underlaid roads and structures have been shown in this plan with a center line and a dashed line respectively. The plan shows the proposed grading and the existing topography. The plan is for information only and does not constitute a contract. The plan is subject to change without notice.

**CUT**  
 7,578 cu. yds.  
**FILL**  
 12,494 cu. yds.  
 (4,916 sheet)  
 NOTE: DOES NOT INCLUDE SUBGRADE REMOVAL

**APPROVED**  
 GBA-6214  
 9/14/88  
 RECEIVED SEP 14 1988  
 GEORGE BUTLER ASSOCIATES, INC.  
 SUITE 200 - 225 SOUTH MAIN ST.  
 O'FALLON, MISSOURI 63366  
 PRES COPY

PLAINTIFF'S  
 EXHIBIT  
 101