

Rev. 9-18-88 J.T. (PROFESSIONAL)  
 Rev. 10-28-88 J.T.  
 Rev. 11-10-88 P.R. & S. (ENGINEER) - WATER  
 Rev. 8-18-89 P.R. & S. CLIENT  
 Rev. 1-30-91 P.R. CLIENT

CHURCH SITE "M"

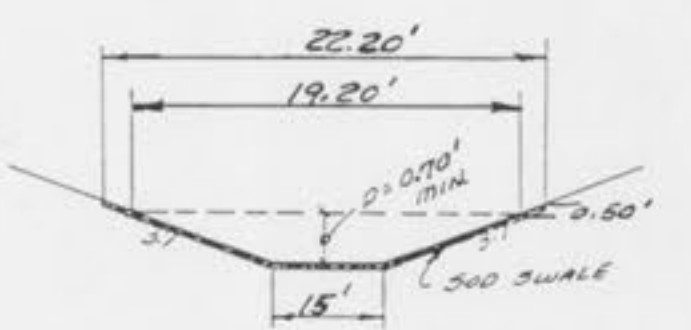
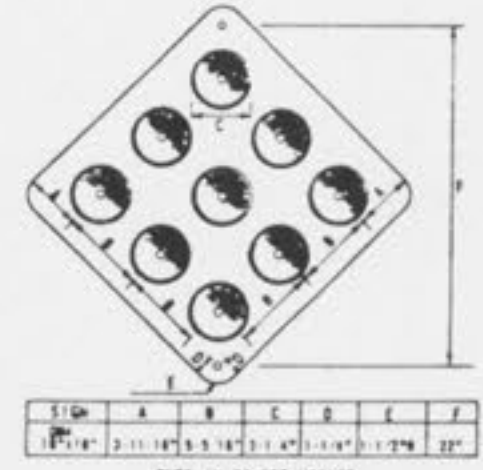


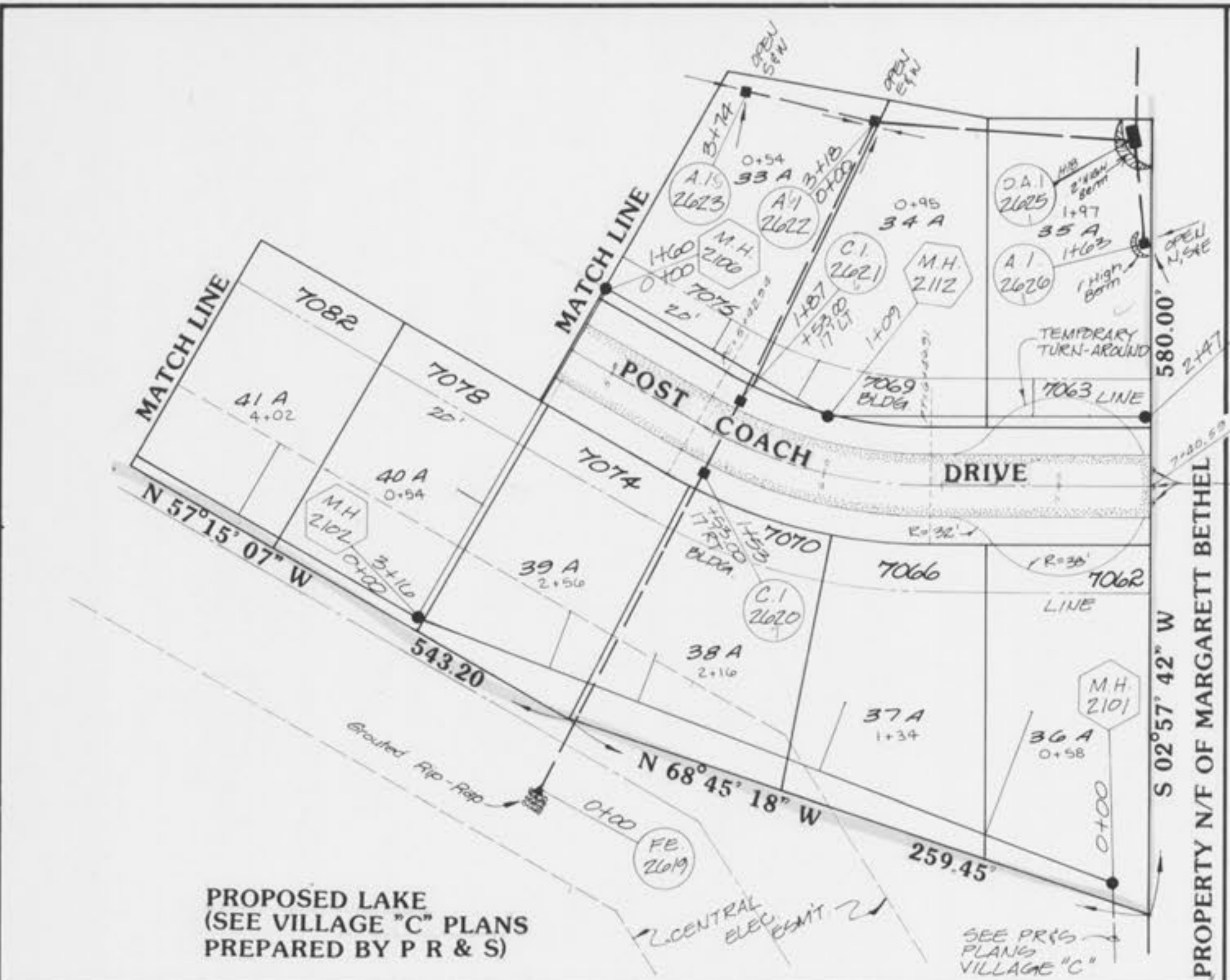
TABLE DETAIL  
 FE 2010 Demand R= 46.52 cfs

R <sup>2</sup> = 11.97'	Q <sub>2</sub> = 2.242 cfs
W <sup>2</sup> = 0.6'	Q <sub>1</sub> = 1.197 cfs
W <sup>2</sup> = 18.43'	Q <sub>2</sub> = 1.197 cfs
W <sup>2</sup> = 0.70'	Q <sub>2</sub> = 0.70 cfs
W <sup>2</sup> = 0.62'	Q <sub>2</sub> = 0.62 cfs
W <sup>2</sup> = 5.0%	Q <sub>2</sub> = 47.40 cfs
W <sup>2</sup> = 1.5'	Q <sub>2</sub> = 47.40 cfs = 3.96 FPS
	Q <sub>2</sub> = 11.97

PAVEMENT BARRICADE DETAIL

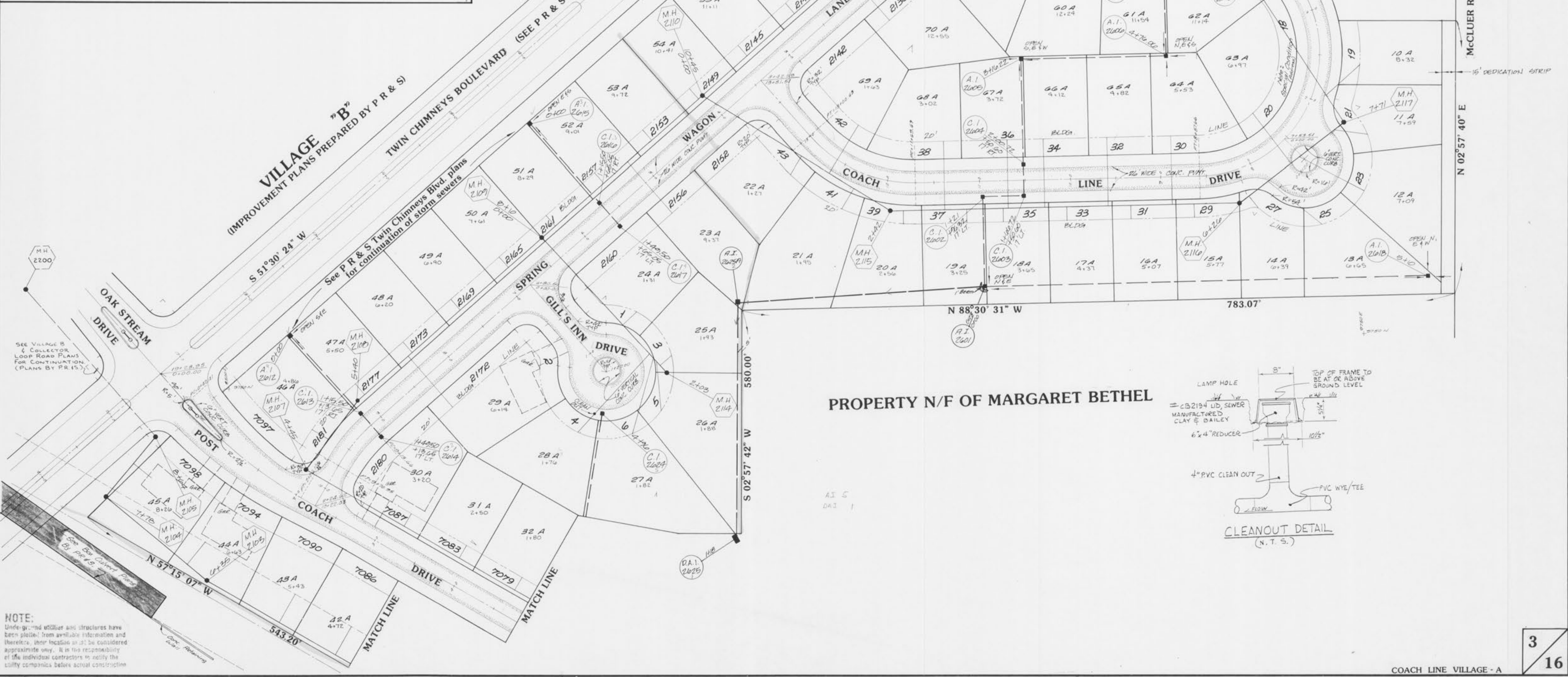


TYPE 11 OBJECT MARKER  
 REFLECTING IN RED POLYMER  
 PROCESSED BY LIGHT SHEET OR TYPE 11 OBJECT MARKER  
 REFLECTING IN RED POLYMER

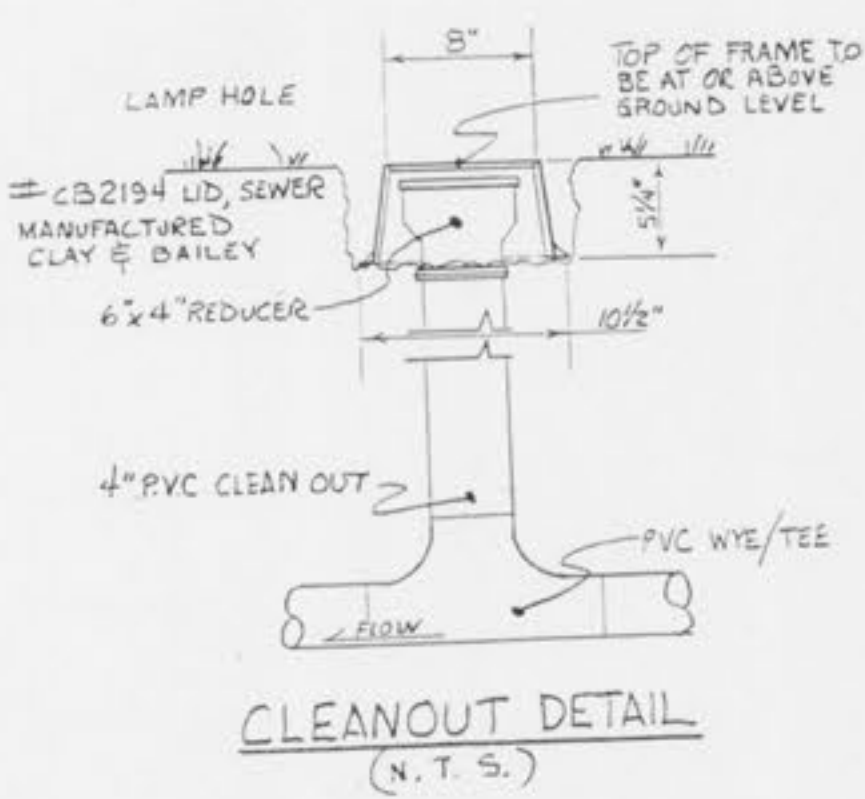


PROPOSED LAKE  
 (SEE VILLAGE "C" PLANS  
 PREPARED BY P R & S)

VILLAGE "B"  
 IMPROVEMENT PLANS PREPARED BY P R & S



PROPERTY N/F OF MARGARET BETHEL



NOTE:  
 Under ground utilities and structures have been placed from available information and therefore, their location in it, be considered approximate only. It is the responsibility of the individual contractors to notify the utility companies before actual construction.