



Scale: 1" = 50'

The total yardage for this project is based on a 15% shrinkage factor.

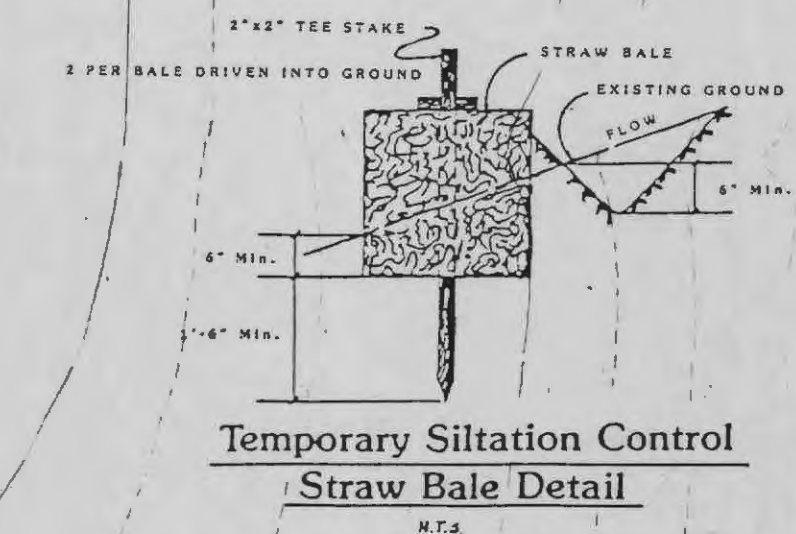
This shrinkage factor is subject to change, due to soil conditions, (types and moisture content) weather conditions, and the percent compaction actually achieved. As a result, adjustments in final grades may be required.

Earth quantities obtained from aerial grid map, with contours at two foot intervals, with a tolerance of plus or minus 1 foot, or 1/2 contour interval.

The computed bid yardage is to finish grade and does not include removal of subgrade.

PROPERTY N/F  
DICKHERBER, WILBERT & MARY

**FUTURE COMMERCIAL**  
SEE GRADING PLAN  
PREPARED BY PICKETT, RAY & SILVER



Temporary Siltation Control  
Straw Bale Detail

**Siltation Control**  
SILTATION CONTROL SHALL CONSIST OF TEMPORARY BERM AND SCALES TO DIVERT STORM WATER RUNOFF TO A NATURAL DISCHARGE POINT. (SEE GRADING PLAN FOR LOCATIONS.) AT WHICH POINT THERE SHALL BE A DOUBLE ROW OF STRAW BALES WITH FOUR FEET OF SEPARATION BETWEEN ROWS. THE STRAW BALES SHALL BE PLACED WITH A ONE FOOT SEPARATION BETWEEN BALES AND STRAW BALES SHALL BE STAGGERED. IN AREAS WHERE A BERM AND SCALE ARE NOT FEASIBLE, A SINGLE ROW OF STRAW BALES SHALL BE PLACED END TO END TO PROTECT ADJACENT PROPERTY AND RIGHT-OF-WAYS (THIS SHALL BE THE RESPONSIBILITY OF THE GRADING CONTRACTOR OR DEVELOPER IF SO AGREED). UPON COMPLETION OF STORM SITES, STRAW BALES SHALL BE PLACED ON ALL SIDES OF APPROPRIATE STRUCTURES TO KEEP SILT OUT OF STORM SEWERS (THIS SHALL BE THE RESPONSIBILITY OF THE SEWER CONTRACTOR OR THE DEVELOPER IF SO AGREED). ALL STRAW BALES SHALL BE SECURELY ANCHORED AND PROPERLY MAINTAINED UNTIL ALL DISTURBED AREAS ARE PAVED OR VEGETATION ESTABLISHED.

**THIS PLAN FOR SILTATION CONTROL PURPOSES ONLY**

**NOTE:**  
Underground utilities and structures have been plotted from available information and therefore, their location must be considered approximate only. It is the responsibility of the individual contractors to notify the utility companies before actual construction.