

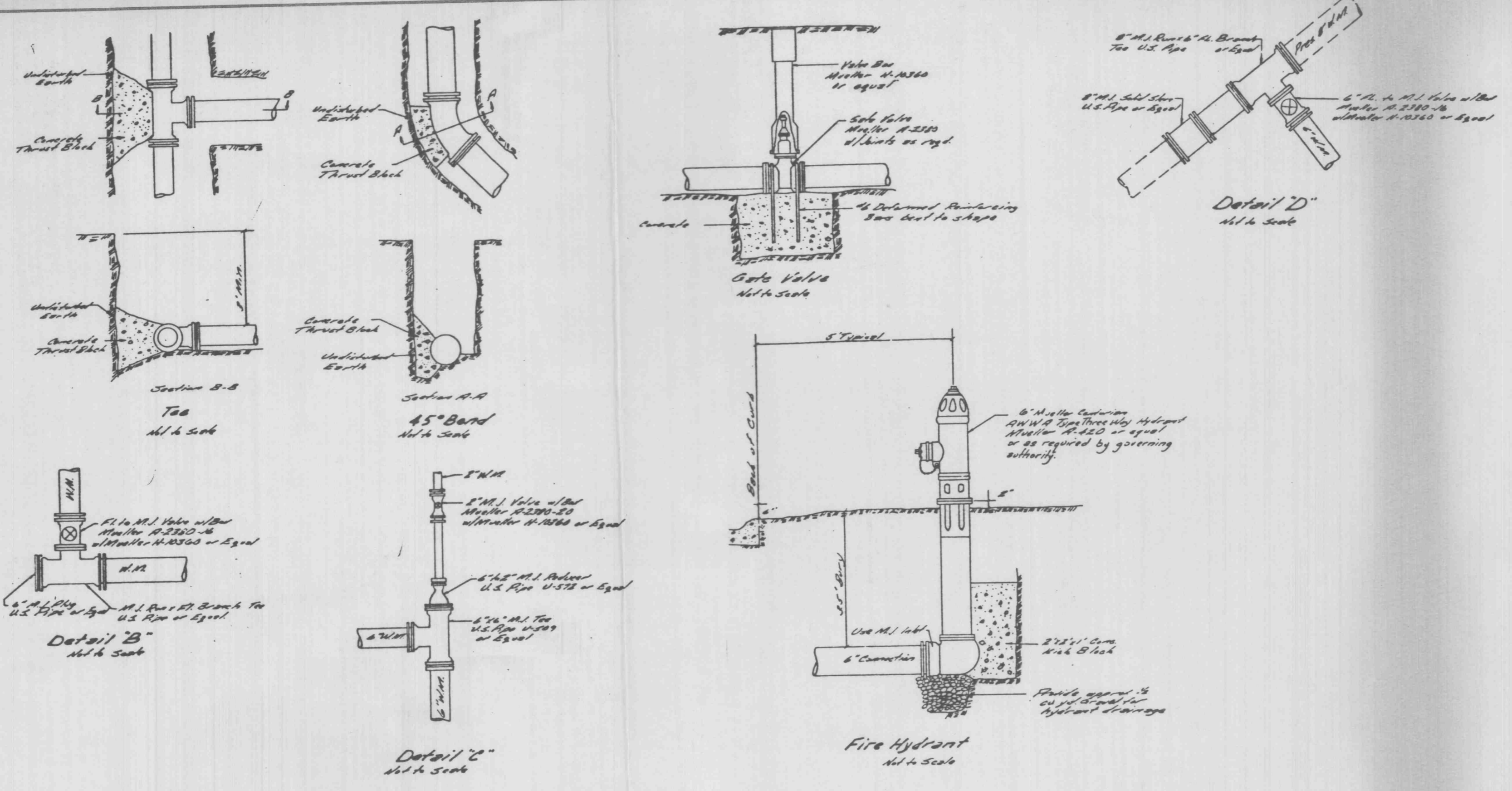


STANDARD SIGN FACE,  
 STANDARD CITY STREET  
 DEPARTMENT GAUGE,  
 WHITE LETTERING ON  
 BLUE BACKGROUND,  
 GALVANIZED STEEL  
 POST 3'-6" LONG, SET  
 BOTTOM OF SIGN 4'-0"  
 ABOVE GRADE, 3'-0"  
 INTO GRADE.

12" x 18"  
 HANDICAPPED PARKING SIGN  
 NOT TO SCALE

Pipe Size	Through-hole Bearing Dimensions	Spigot Dimensions	Overall Dimensions
2"	2 1/2"	2 1/2"	2 1/2"
4"	4 1/2"	4 1/2"	4 1/2"
6"	6 1/2"	6 1/2"	6 1/2"
8"	8 1/2"	8 1/2"	8 1/2"

Thrustblock Schedule



WATER DETAILS

