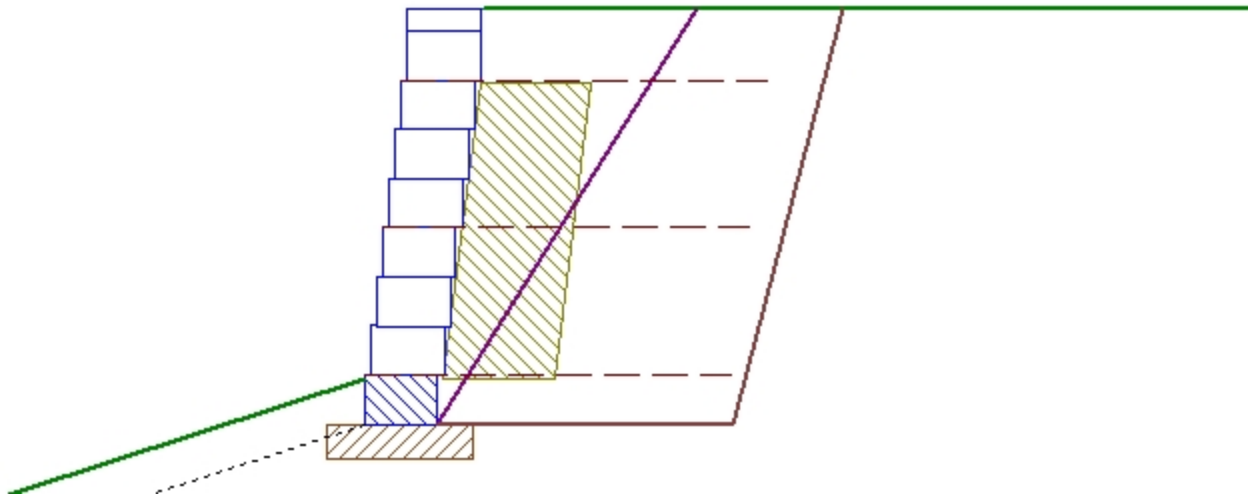


Section 7 Details

Section 7 Cross-section



Section 7 Cross-section Details

Upper Slope Angle		0.00 °
Crest Offset		0.00 ft
Live Load	ql	0 lb/ft ²
Live Offset	qlofs	0.00 ft
Dead Load	qd	0 lb/ft ²
Dead Offset	qdofs	0.00 ft
Top of Section		502.09 ft
Bottom Grade		497.05 ft
Base of Section		496.45 ft
Design Height	H	5.64 ft
Embedment Depth	Hemb	0.60 ft

* Analysis includes Vertical Forces

* Embedment is included in Bearing Capacity

Empirical Checks

Check	Description	Min. Requirement	Result	Status
Hemb	Minimum Embedment %	10.0000	11.8800	Pass
L	Min. Reinforcement Length	4.0000	5.0000	Pass
L/H Ratio	Min. L/H Ratio	0.6000	0.9375	Pass
La	Min. Anchorage Length	1.0000	1.6647	Pass
MinHemb	Minimum Embedment	6.0000	7.1772	Pass
Rs	Max. Reinforcement Separation	0.0000	2.0000	Pass
RsBottom	Max. multiple of Hu at bottom	0.0000	1.0000	Pass
RsTop	Max. multiple of Hu at top	0.0000	1.4532	Pass

External Checks

Static

Check	Description	Min. Requirement	Result	Status
FSbc	Bearing Capacity	2.00	6.36	Pass
FSct	Crest Toppling	1.50	18.42	Pass
FSot	Overturning	2.00	11.20	Pass
FSsl	Base Sliding	1.50	3.81	Pass

Internal and Local Checks

Static

Layer	Elevation (ft)	FScs	FSpo	FSsl	FSto
1	497.12	7.16	19.69	8.01	10.86
2	499.12	8.83	11.53	16.15	14.64