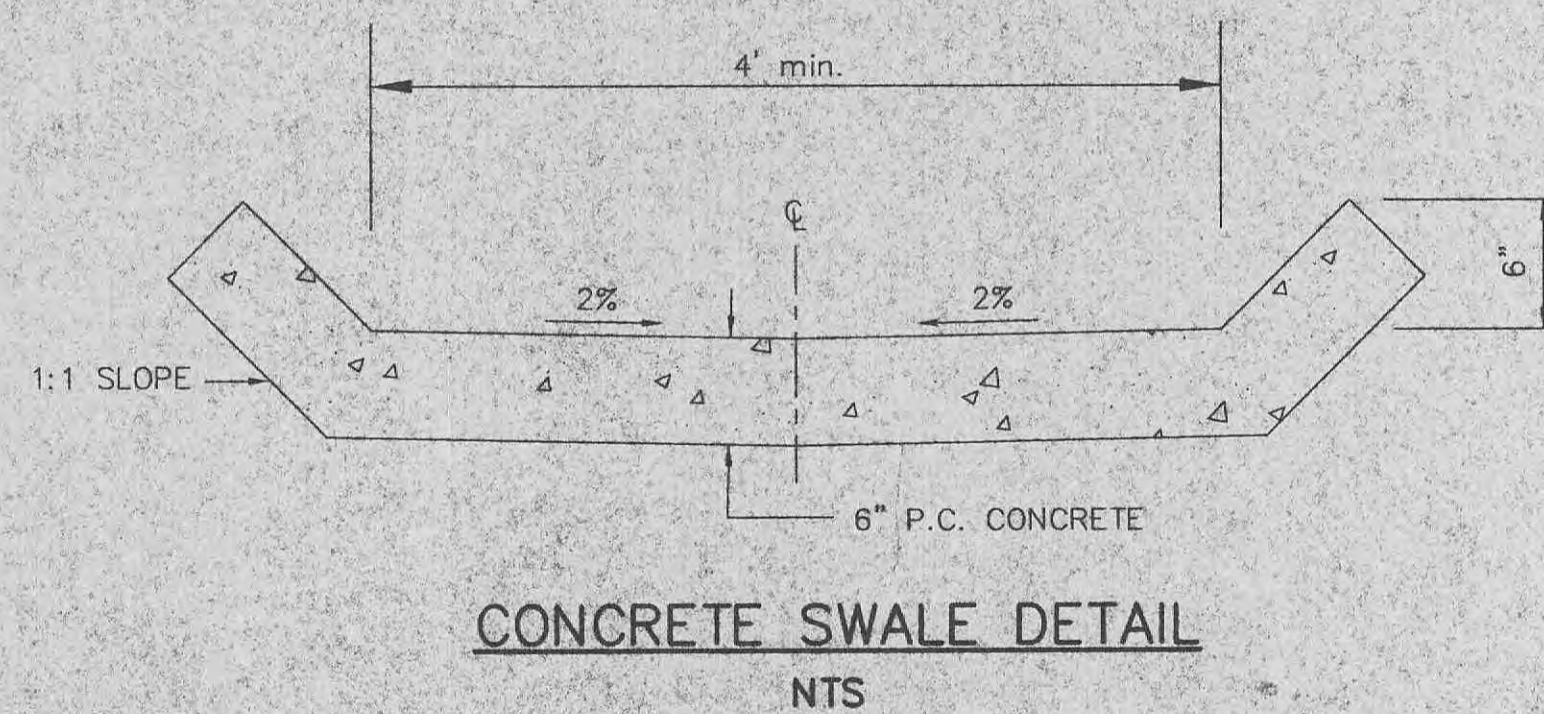
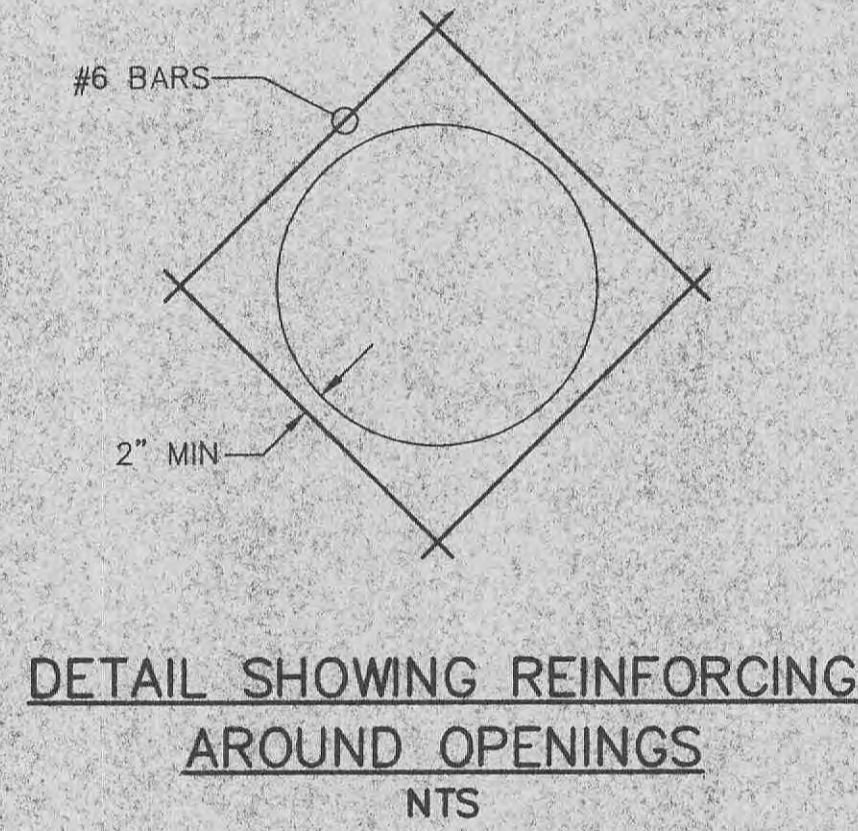


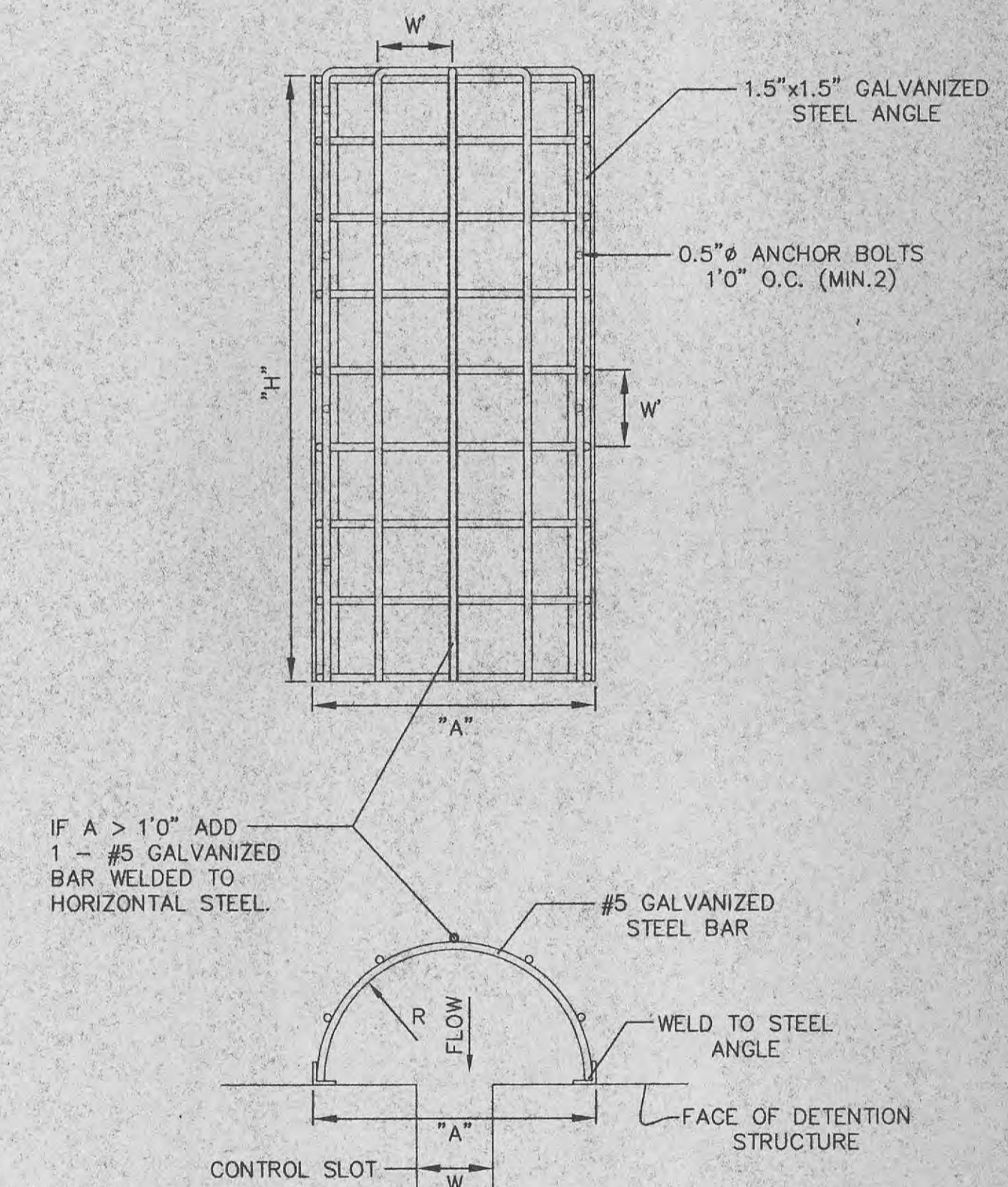
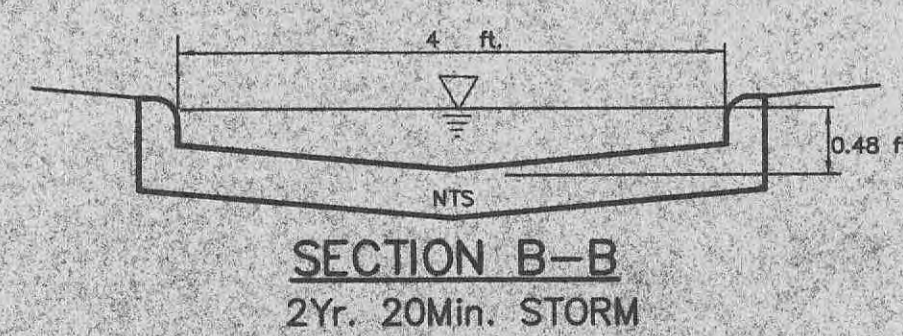
CONSTRUCTION NOTES:

- Concrete for the structure shall be "air entrained" and contain at least 6 sack Class "A" Portland Cement per cubic yard. The concrete shall be placed at a slump of 4 inches \pm 1/2 inch. The concrete shall be proportioned and transported in accordance with ASTM C-94.
- Reinforcing steel shall conform to ASTM C-615-60 with deformations conforming to ASTM A-305 and shall have a minimum cover of 2 inches except for 3 inches where concrete is poured against earth.
- Laps and/or splices in reinforcing steel shall be a minimum of 30 bar diameters.
- Keyed joints shown are to be 2-inch by 2-inch keyed construction joints.
- $F_y = 60,000$ psi.
- $F_c = 3,500$ psi.
- All exposed edges are to have a 3/4-inch Chamfer.
- Contractor to provide for bypass of stormwater during construction of structure.
- Soil density tests shall be obtained by the soils engineer at selected intervals to insure compliance with soils specifications.
- All soil specifications shall be directed by soils engineer.
- 2" clear (typ) to closest rebar to concrete surface.
- Basin is to be seeded and strawed per City of O'Fallon specifications.



SECTION DATA

Mannings Coefficient	0.013
Channel Slope	0.00300 ft/ft
Depth	0.48ft
Left Side Slope	2.00%
Right Side Slope	2.00%
Bottom Width	4.00 ft
Discharge	8.06 cfs
Max Discharge	7.26 cfs
Velocity	3.28 fps



W = WIDTH OF CONTROL SLOT
 $A = (W) \times (3)$
 H = HEIGHT OF CONTROL SLOT
 $R = 1/2 A$
 $W' = \text{BAR SPACING} = W - 1"$

PREPARED BY: **STERLING**
 ENGINEERS, SURVEYORS AND PLANNERS CO.
 5055 NEW BAUMGARTNER ROAD
 ST. LOUIS, MISSOURI 63129
 (314) 487-0440 FAX: 487-6944

REVISIONS:

NO.	DATE	INITIAL	NOTES
1	11/19/99	RL	FIRST SUBMITTAL TO ENG.
2	1/27/00	RL	REV PER CITY & MUDS COMMENTS
3			
4			
5			
6			
7			
8			

PROFESSIONAL SEAL:

 ARCHITECT/LOGO:

U-HAUL
 U-HAUL INTERNATIONAL
 CONSTRUCTION & RENOVATION
 2727 NORTH CENTRAL AVENUE
 PHOENIX, ARIZONA 85004
 PH: 602/263-6502
 FAX: 602/277-1026

SITE ADDRESS:
 U-HAUL OF OFALLON
 HWY "K"
 CITY OF OFALLON MO

SHEET CONTENTS:
 OUTFALL STRUCTURE
 DETAIL

3591-00

DRAWN BY: DK
 CHK'D BY: MB
 DATE: 04/09/99
 C7