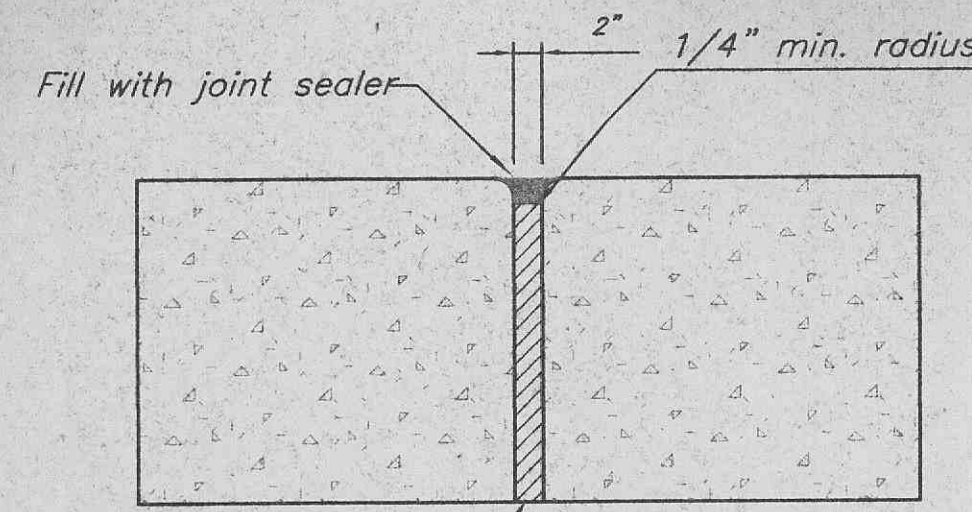
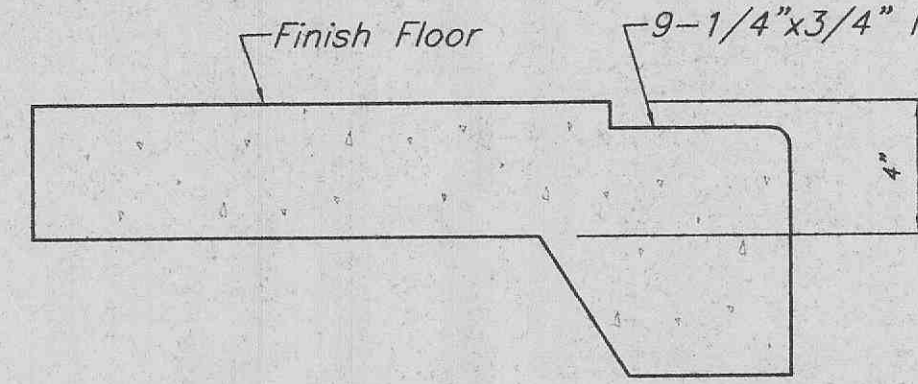


**TYPE C CONTRACTION JOINT**

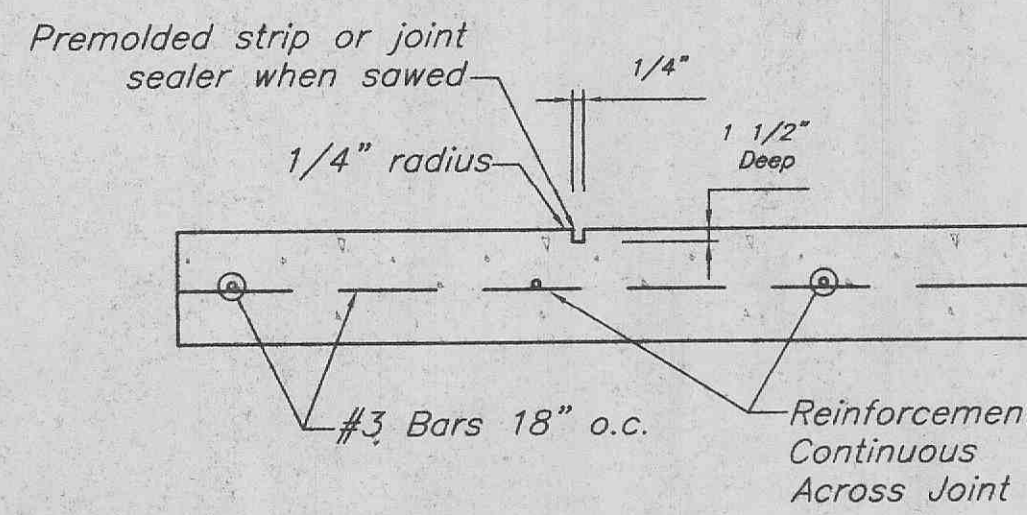


**TYPE A EXPANSION JOINT**



- Notes:
1. Provide transverse construction joints at intervals not exceeding sidewalk width.
  2. Provide expansion joints at intervals not exceeding 42'-0" on center. Align expansion joints with curb expansion joints where applicable.

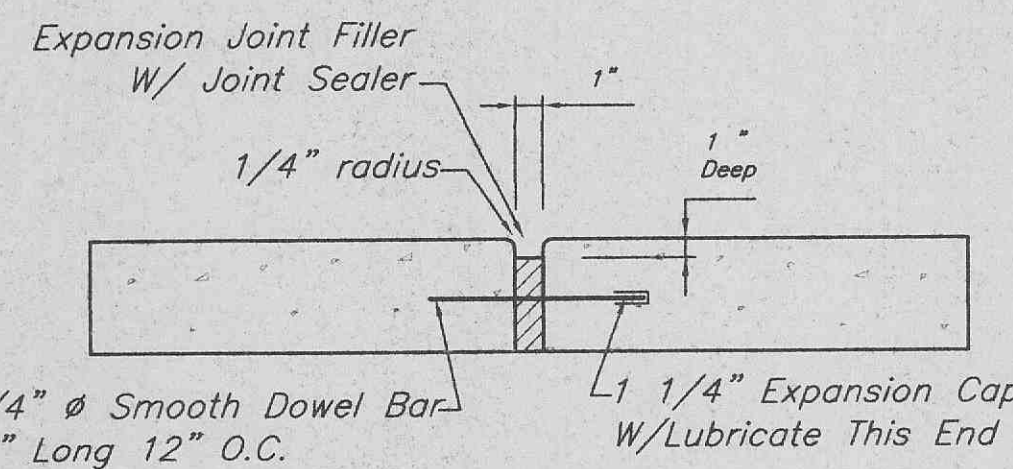
**SIDEWALK DETAILS**



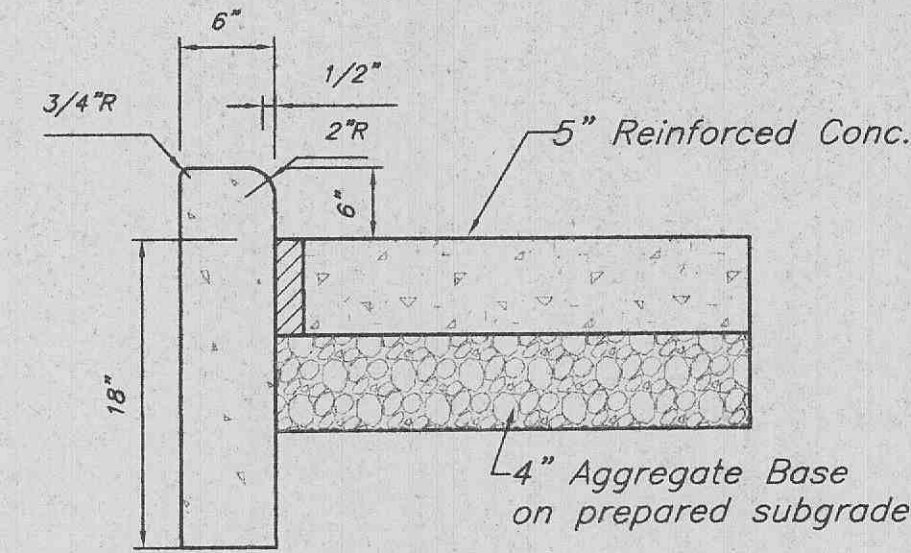
**CONTRACTION JOINTS**

- Notes:
1. Provide construction joints @ 10'± grid spacing or as shown.
  2. Provide expansion joints @ 100' max. spacing or as shown.
  3. Construction joints shall be placed at construction or expansion joint locations and doweled and sealed per joint type.

**CONCRETE PAVEMENT JOINTS**



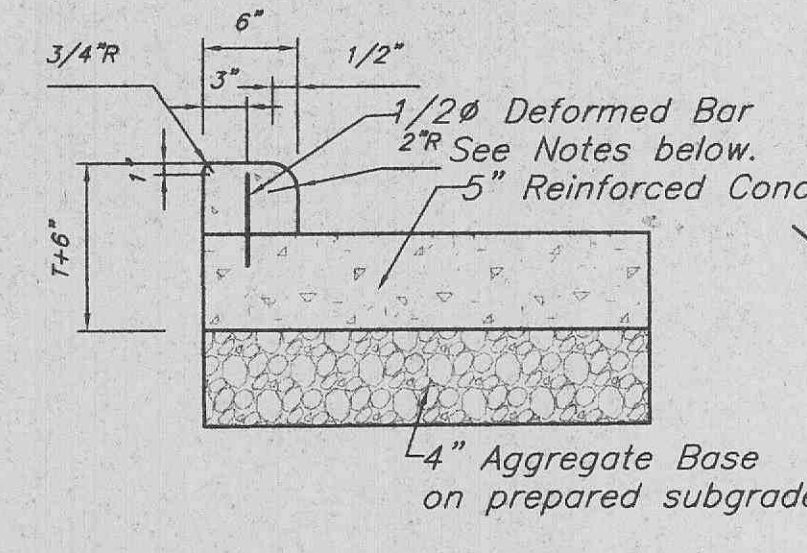
**EXPANSION JOINT**



**6" CONCRETE CURB**

- Notes:
1. Construction joint and tie bar may be omitted when curb is poured integral with pavement.
  2. Length of the tie bars shall equal the thickness of pavement plus the height of curb less 3". Tie bars shall be placed a 24" inches on center.

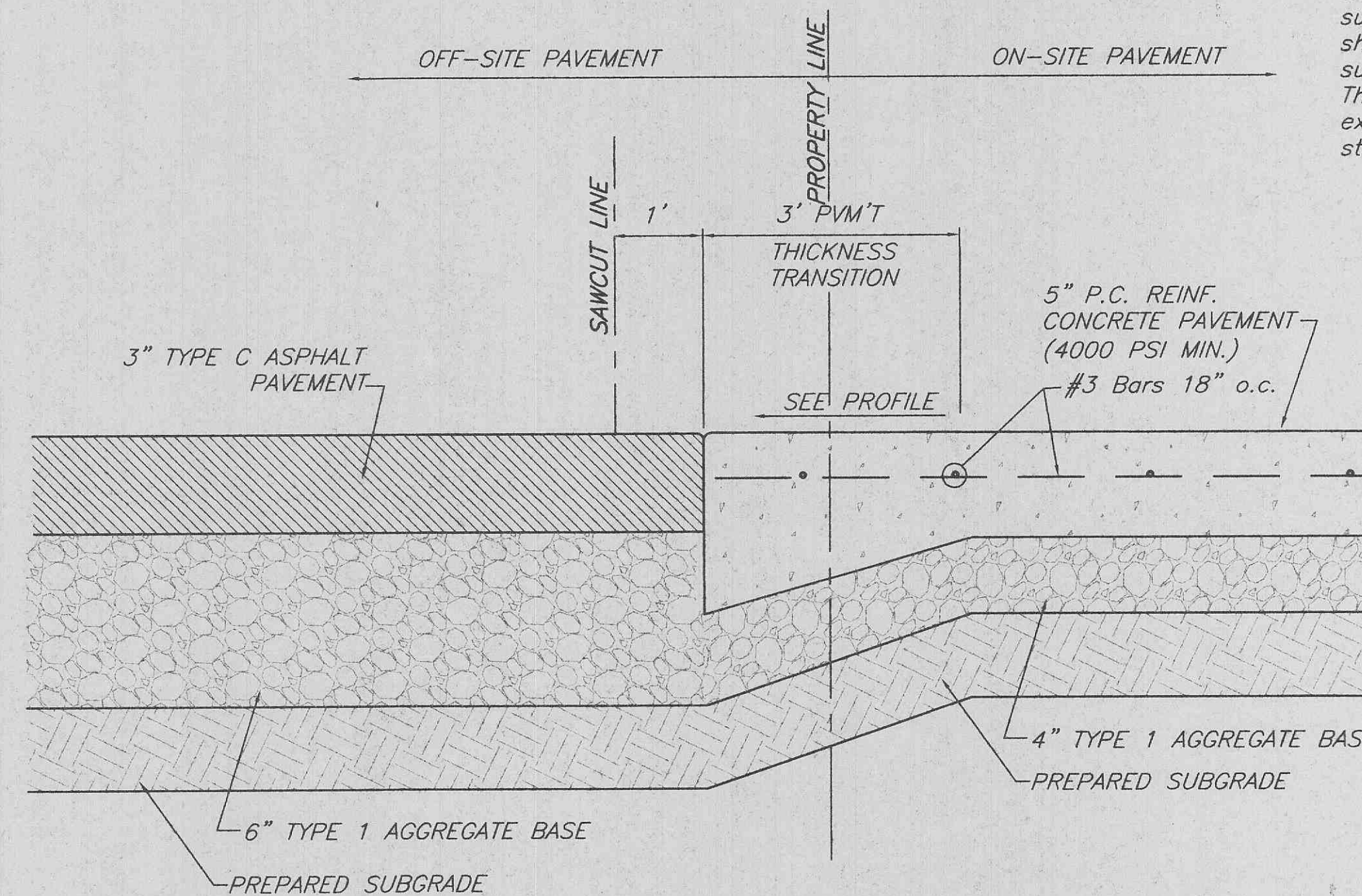
**CONCRETE CURB DETAILS**



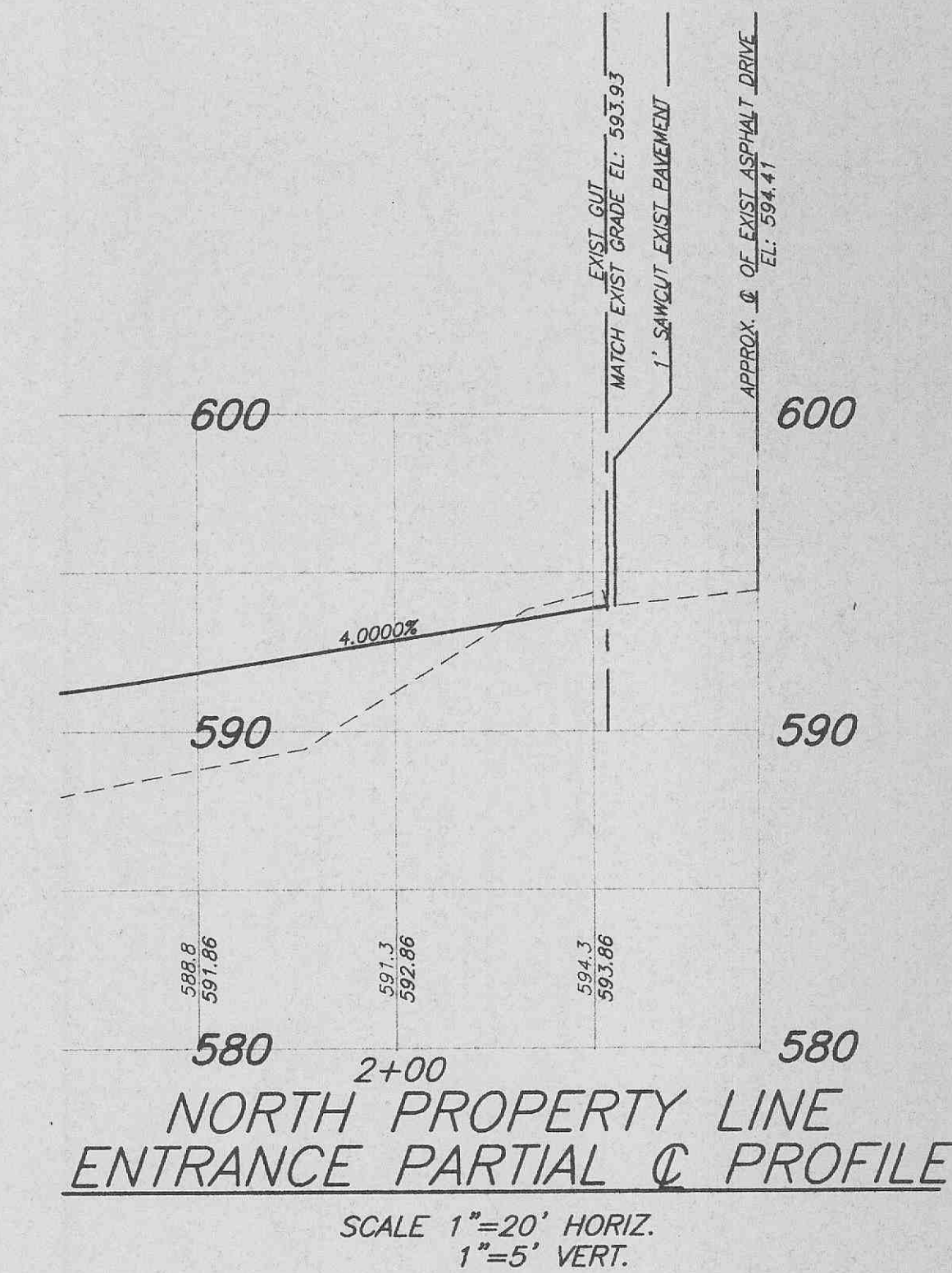
**6" CONCRETE DOWELED CURB (OPTIONAL)**

- Notes:
1. Provide striping or a colored textured asphalt where trail intersects with access drives into shopping center.
  2. Maximum slope of path shall not exceed 8% and 2% cross slope per City of O'Fallon specifications.
  3. The trail shall be constructed with a consistent slope with vertical curves a minimum of 50' in length. After final compression, the surface shall be smooth and true to the established crown and grade. Any low or defective places shall immediately be remedied by cutting out the course at such spots and replacing it with fresh hot mixture, which shall be immediately compacted to conform with the surrounding area and shall be thoroughly bonded to it. The finished pavement shall be set free from depressions exceeding one-eighth inch as measured with a ten-foot straight edge paralleling the centerline of the trail.

**MULTI-USE PATH DETAIL**

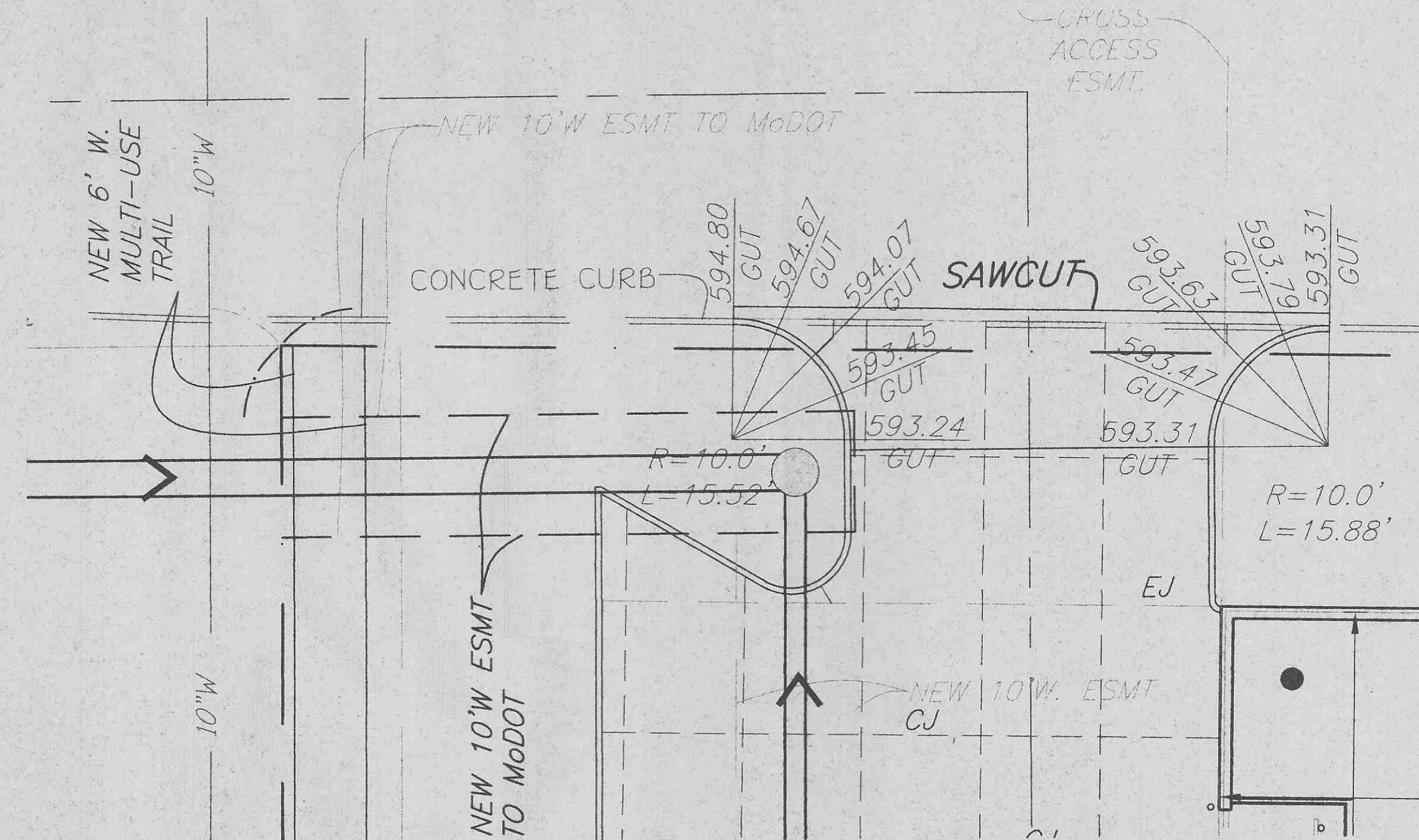


**TYPICAL CONCRETE PAVEMENT SECTIONS @ NORTH PROPERTY LINE ENTRANCE**



**NORTH PROPERTY LINE ENTRANCE PARTIAL C PROFILE**

SCALE 1"=20' HORIZ.  
1"=5' VERT.



**NORTH PROPERTY LINE ENTRANCE WARPING DETAIL**

- Note:
1. Entrance to be constructed per City of O'Fallon standards and specifications.

5055 NEW BAUMGARTNER ROAD  
ST. LOUIS, MISSOURI 63129  
**STERLING**  
ENGINEERS, SURVEYORS AND PLANNERS  
(314) 487-0440, FAX 487-8944

NO.	DATE	INITIALS	NOTES
1	11/19/99	RL	FIRST SUBMITTAL TO ENG.
2	1/27/00	RL	REV PER CITY & MODOT COMMENTS
3	2/29/00	RL	REV PER CITY & MODOT COMMENTS
4			
5			
6			
7			
8			

PROFESSIONAL SEAL  
ARCHITECT LOGO

**U-HAUL**  
U-HAUL INTERNATIONAL  
CONSTRUCTION & RENOVATION  
2727 NORTH CENTRAL AVENUE  
PHOENIX, ARIZONA 85004  
PH: 602/263-6502  
FAX: 602/277-1026

SITE ADDRESS:  
U-HAUL OF O'FALLON  
2000 HIGHWAY K  
O'FALLON  
SHEET CONTENTS:  
ENTRANCE AND  
WARPING PLAN

3591  
DRAWN BY: RL  
CHK'D BY: MB  
DATE: 04/20/99  
1260-DET