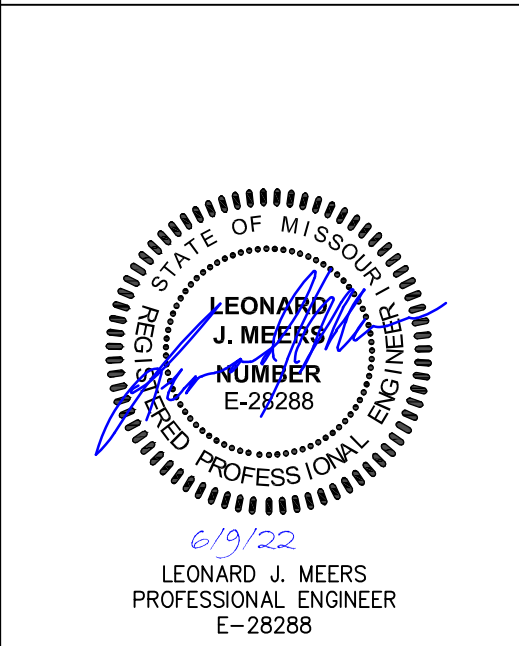


NO.	DESCRIPTION	DATE
1	CITY COMMENTS	02-24-2022
2	CITY/UTIL COMMENTS	03-14-2022

**PROJECT TITLE**  
**O'FALLON U-HAUL**  
**1200 S. OUTER ROAD**  
**O'FALLON, MO 63366**

**GRIMES CONSULTING, INC.**  
*Civil Engineering & Surveying Services*  
 GRIMES CONSULTING, INC.  
 PROFESSIONAL ENGINEER CORPORATION, E-1470-D  
 PROFESSIONAL LAND SURVEYING CORPORATION, LS-343-D  
 www.grimesconsulting.com

12300 OLD TESSON ROAD  
 SUITE 3000  
 O'FALLON, MO 63328  
 PH. (314) 849-6100  
 PH. (314) 849-6010  
 FAX (314) 849-6010



**Developer / Owner Information**  
**UHAUL**  
 CONTACT: MICHAEL WHITE  
 314-952-6203  
 Email: michael.white@uhhaul.com

**P+Z No.**  
**Approval Date:**  
**City No.**  
**Page No.**  
**C5.0**

**EARTHWORK NOTES:**

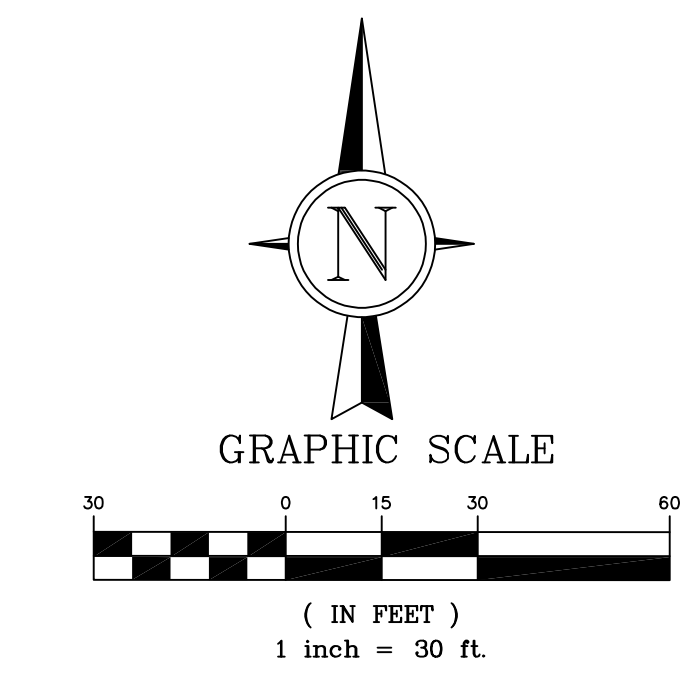
BULK CUT.....3,245 C.Y.  
 BULK FILL.....4,720 C.Y. (w/15% SHRINKAGE).....+ CUBIC YARD  
 USE 1,475 C.Y. TO BALANCED WITH UTILITY SPOILS

THE QUANTITIES ESTIMATED FOR EACH OF THE IMPROVEMENT ITEMS LISTED ABOVE ARE BASED UPON THE HORIZONTAL AND VERTICAL LOCATION OF THE IMPROVEMENTS AS PROPOSED ON THE SITE. ENGINEERING PLANS PREPARED BY GRIMES CONSULTING, INC. ALL QUANTITIES SHALL BE VERIFIED BY THE CONTRACTOR. IT IS THE RESPONSIBILITY OF THE CONTRACTOR TO PROVIDE ALL LABOR AND EQUIPMENT NECESSARY TO MOVE REQUIRED QUANTITY OF MATERIALS TO COMPLETE THE PROJECT IN ACCORDANCE WITH THE PLANS AND SPECIFICATIONS.

THE ENGINEER'S EARTHWORK ESTIMATE DOES NOT INCLUDE ANY OF THE FOLLOWING ITEMS REQUIRING EARTHWORK THAT MAY BE NECESSARY FOR COMPLETION OF THE PROJECT: MISCELLANEOUS UNDERGROUND CONDUITS, INCLUDING SEWER LINES AND WATER MAINS LESS THAN TWENTY-FOUR INCHES IN DIAMETER, STANDARD MANHOLES; PROCESS OR TRANSFER PIPING; ELECTRICAL OR TELEPHONE CONDUITS; BASES FOR LIGHT STANDARDS; BUILDING FOOTINGS AND FOUNDATIONS, ETC.

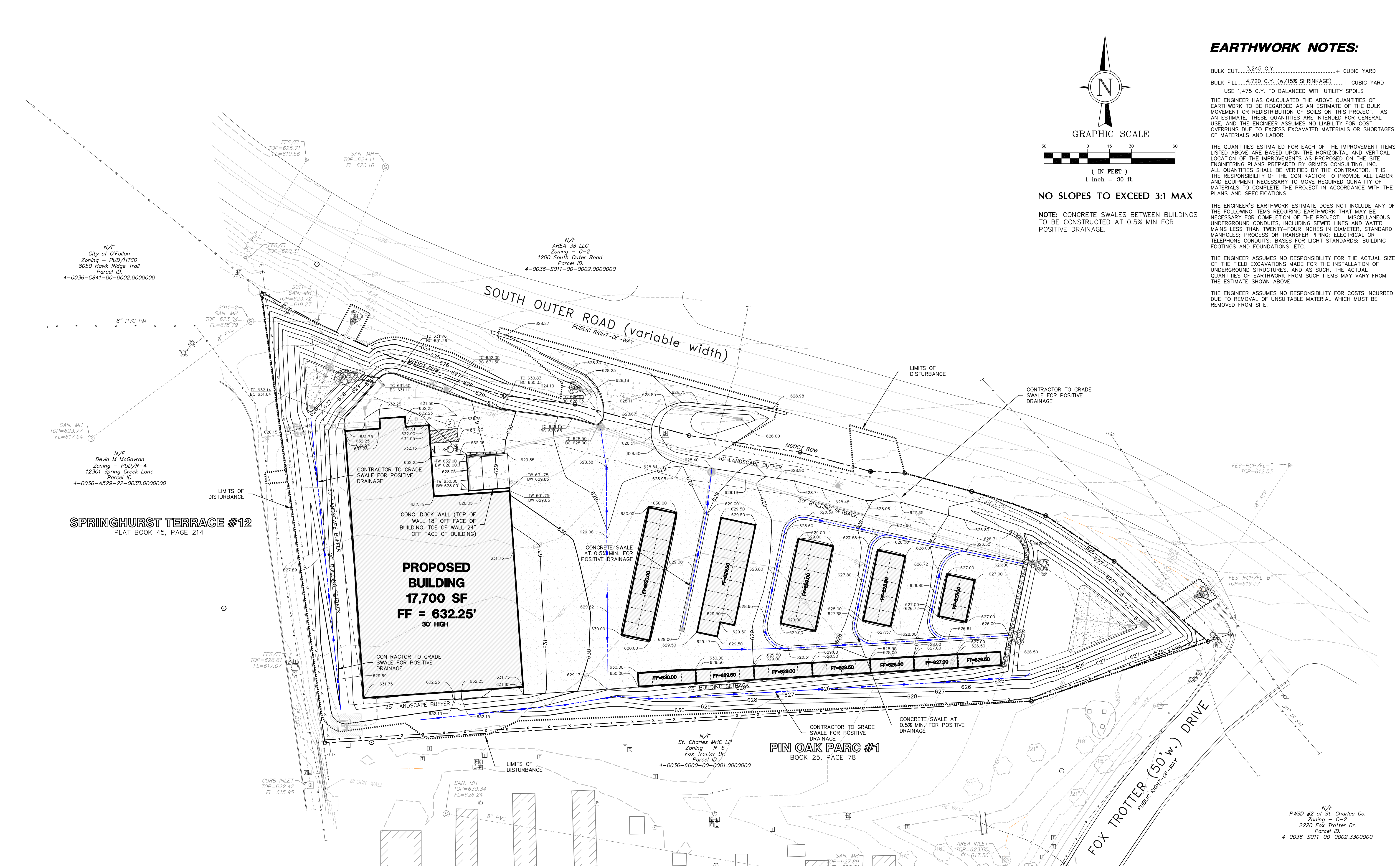
THE ENGINEER ASSUMES NO RESPONSIBILITY FOR THE ACTUAL SIZE OF THE FIELD EXCAVATIONS MADE FOR THE INSTALLATION OF UNDERGROUND STRUCTURES, AND AS SUCH, THE ACTUAL QUANTITIES OF EARTHWORK FROM SUCH ITEMS MAY VARY FROM THE ESTIMATE SHOWN ABOVE.

THE ENGINEER ASSUMES NO RESPONSIBILITY FOR COSTS INCURRED DUE TO REMOVAL OF UNSUITABLE MATERIAL WHICH MUST BE REMOVED FROM SITE.



**NO SLOPES TO EXCEED 3:1 MAX**

**NOTE:** CONCRETE SWALES BETWEEN BUILDINGS TO BE CONSTRUCTED AT 0.5% MIN FOR POSITIVE DRAINAGE.



PREPARED FOR:  
**BRINKMANN CONSTRUCTORS**  
 CONTACT: JACOB ENGLERT  
 16650 CHESTERFIELD GROVE RD, SUITE 100  
 CHESTERFIELD, MO 63005  
 PH: (636) 537-9700  
 E: JEnglert@brinkmannconstructors.com