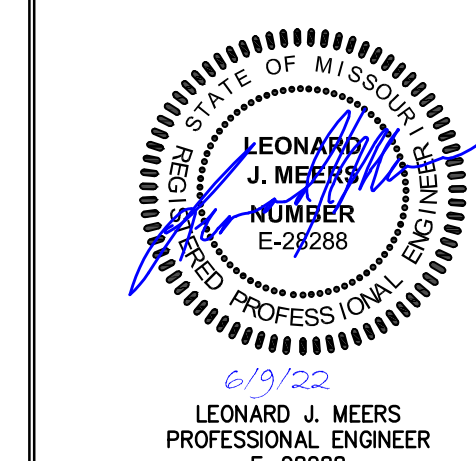


NO.	DESCRIPTION	DATE
1	CITY COMMENTS	02-24-2022
2	CITY/UTIL COMMENTS	03-14-2022

PROJECT TITLE  
**O'FALLON U-HAUL**  
 1200 S. OUTER ROAD  
 O'FALLON, MO 63366

GRIMES CONSULTING, INC.  
 Civil Engineering & Surveying Services  
 GRIMES CONSULTING, INC.  
 PROFESSIONAL ENGINEER CORPORATION, E-1470-D  
 PROFESSIONAL LAND SURVEYING CORPORATION, LS-543-D  
 12300 OLD TESSON ROAD  
 SUITE 3000  
 O'FALLON, MO 63378  
 PH: (314) 849-6100  
 FAX: (314) 849-6010  
 www.grimesconsulting.com

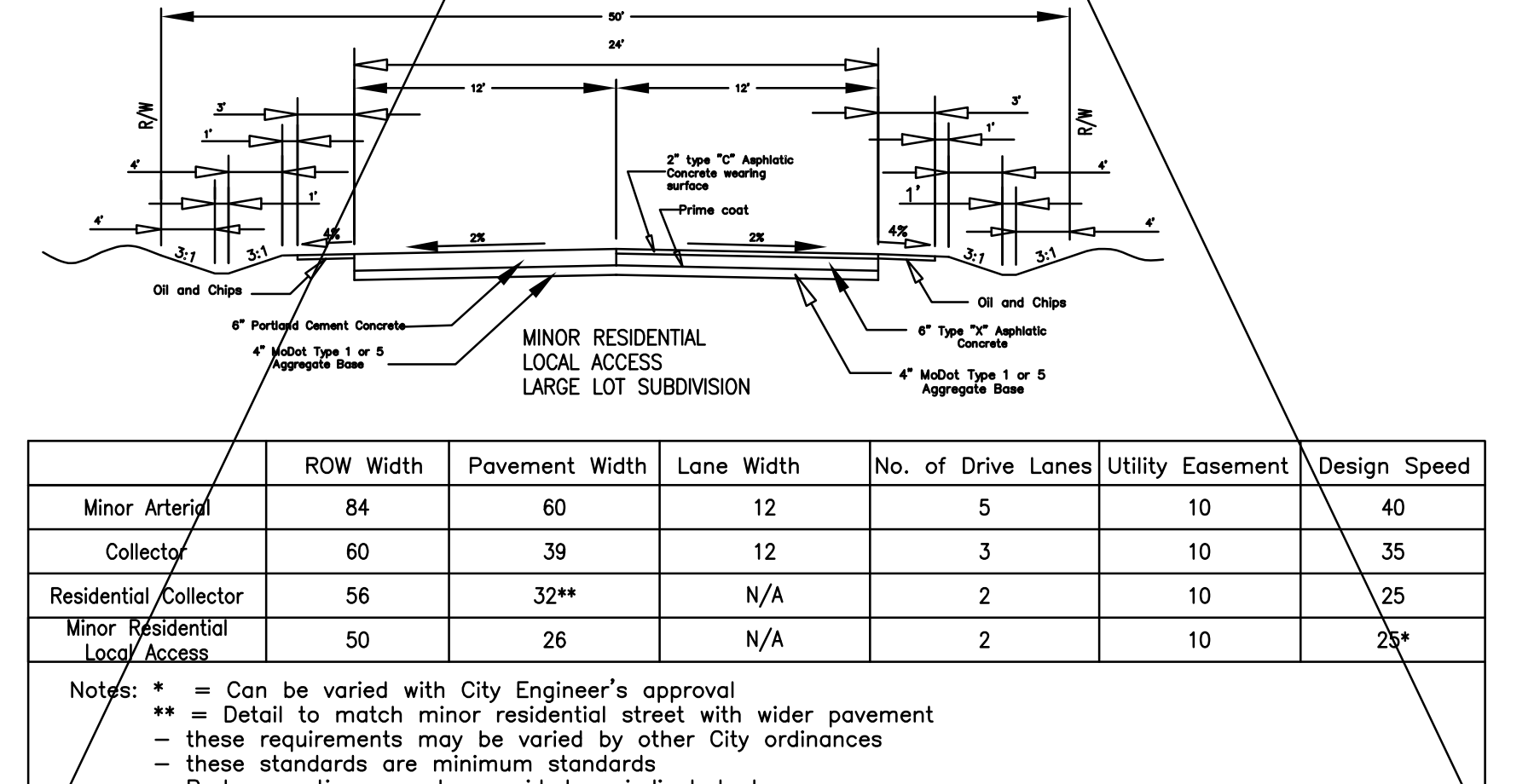
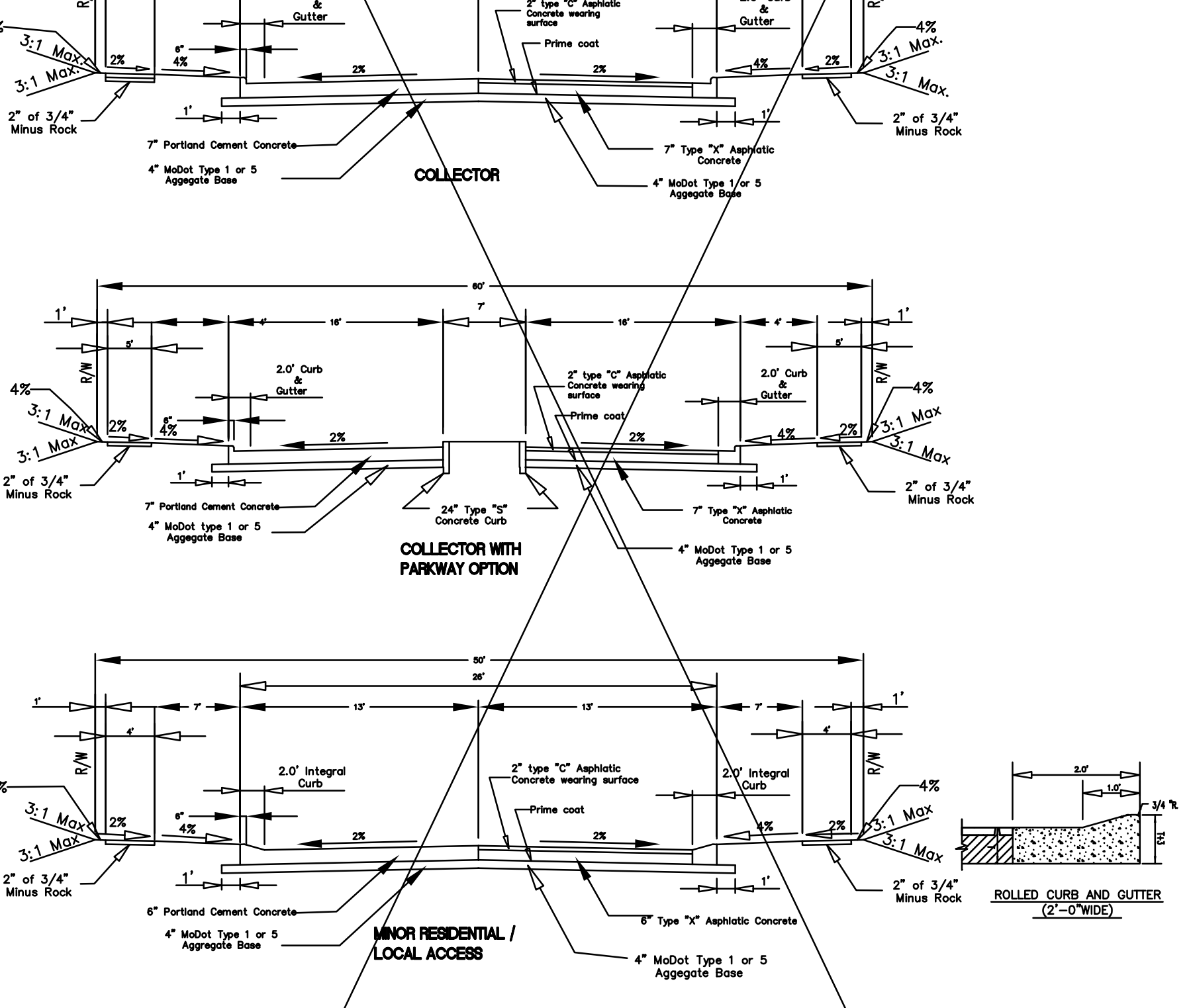
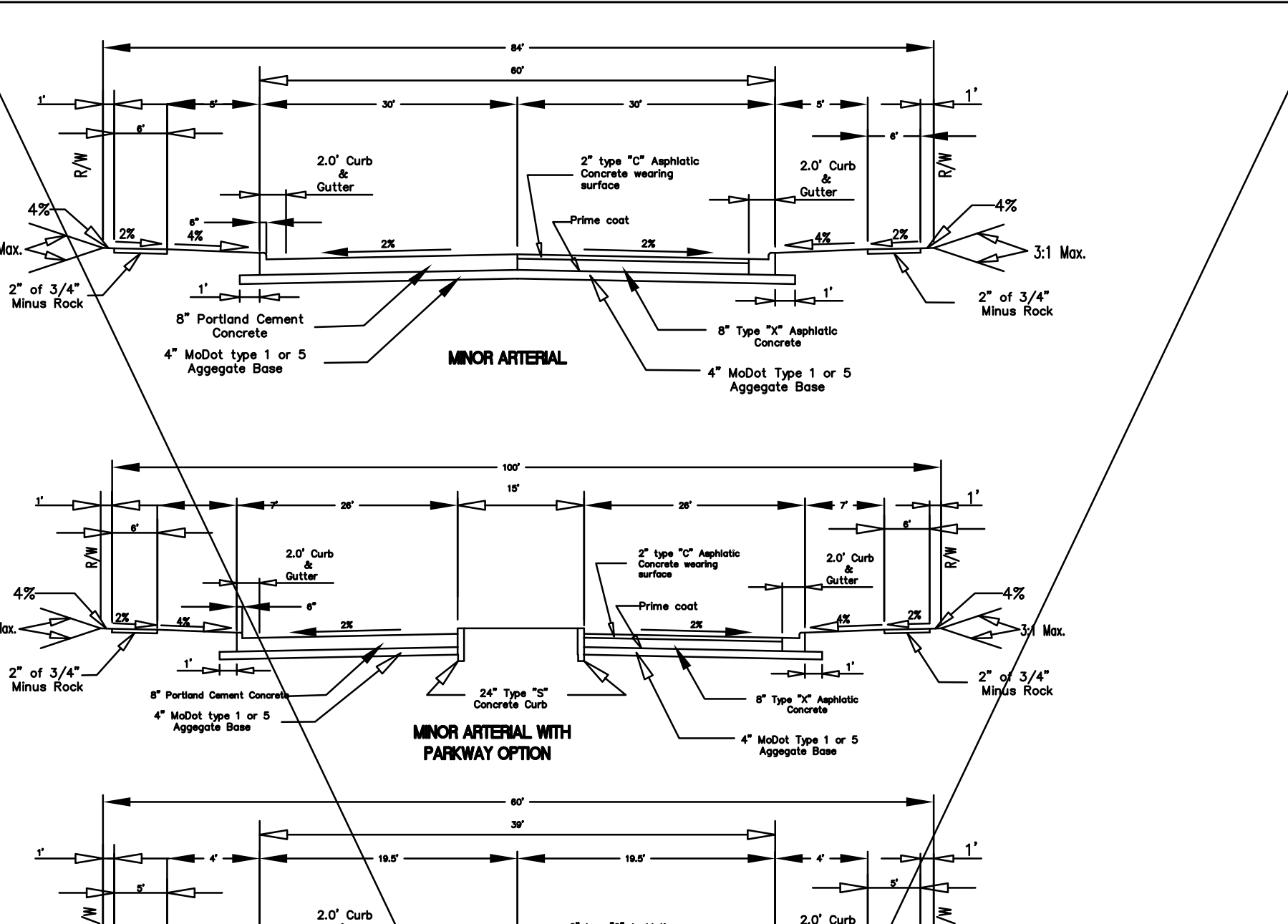


LEONARD J. MEERS  
 PROFESSIONAL ENGINEER  
 E-28288

Developer / Owner Information  
**UHAUL**  
 CONTACT: MICHAEL WHITE  
 314-952-6203  
 Email: michael\_white@uhhaul.com

P4-Z No.  
 Approval Date:

City No.  
 Page No.  
**C8.3**



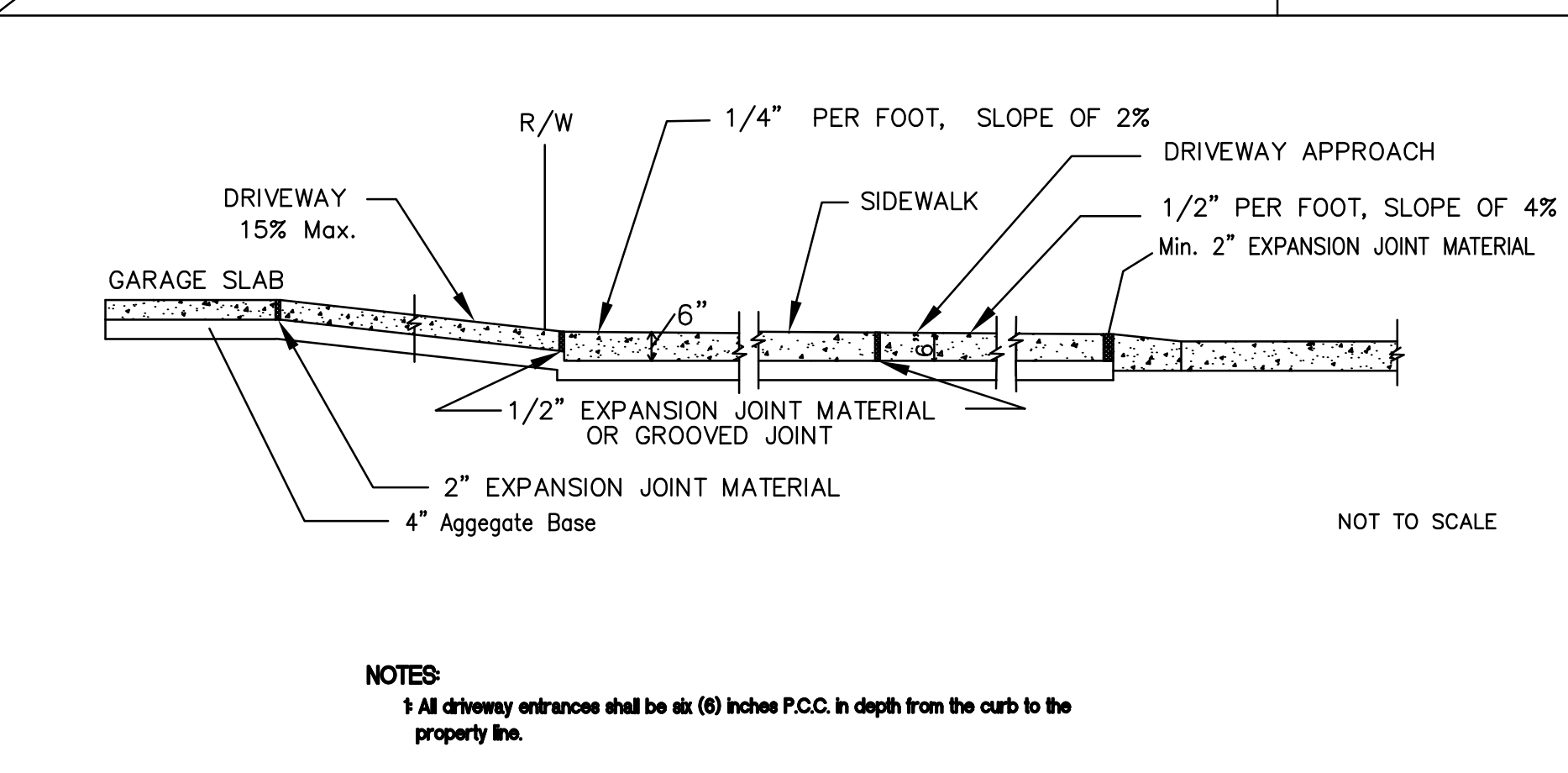
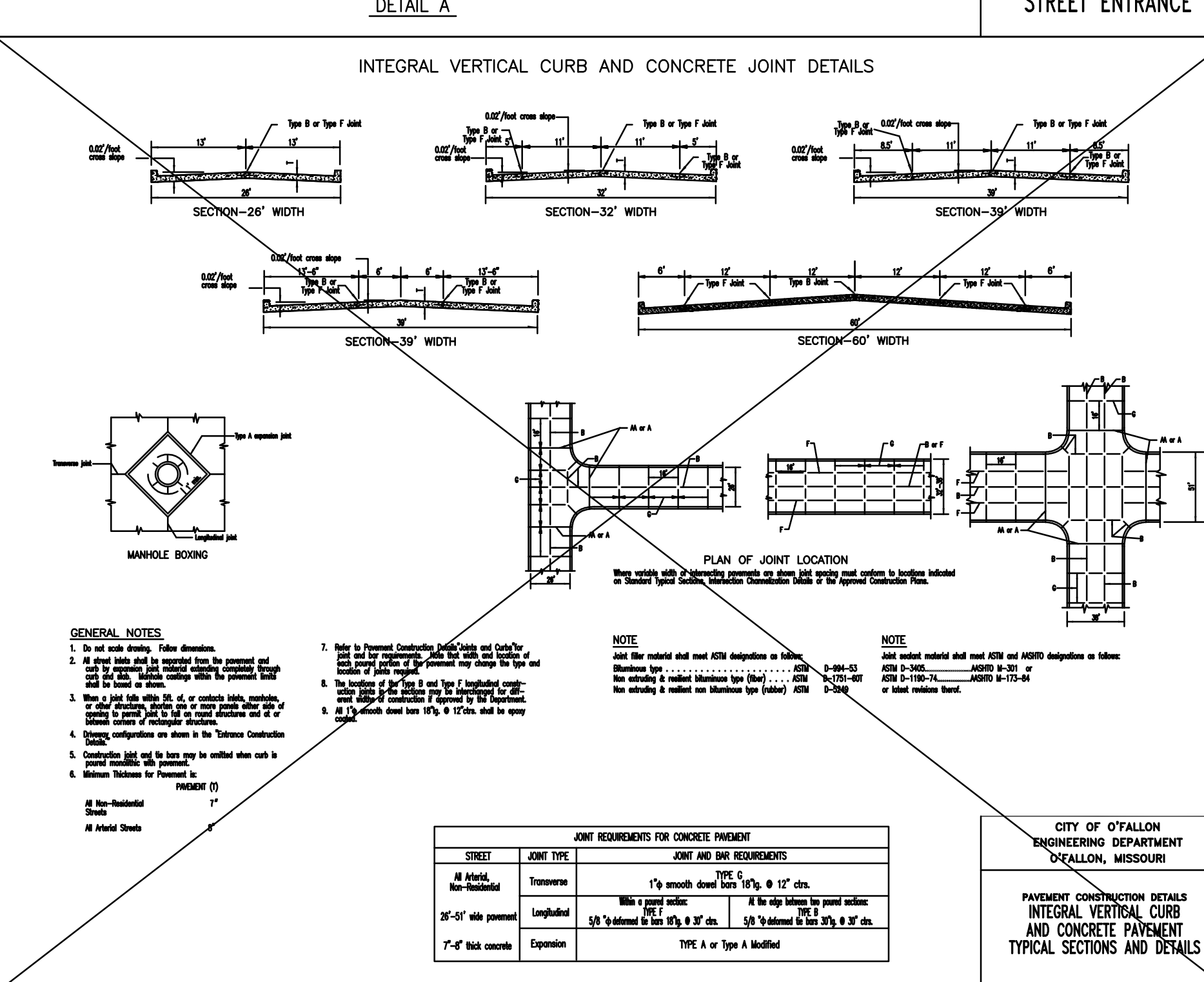
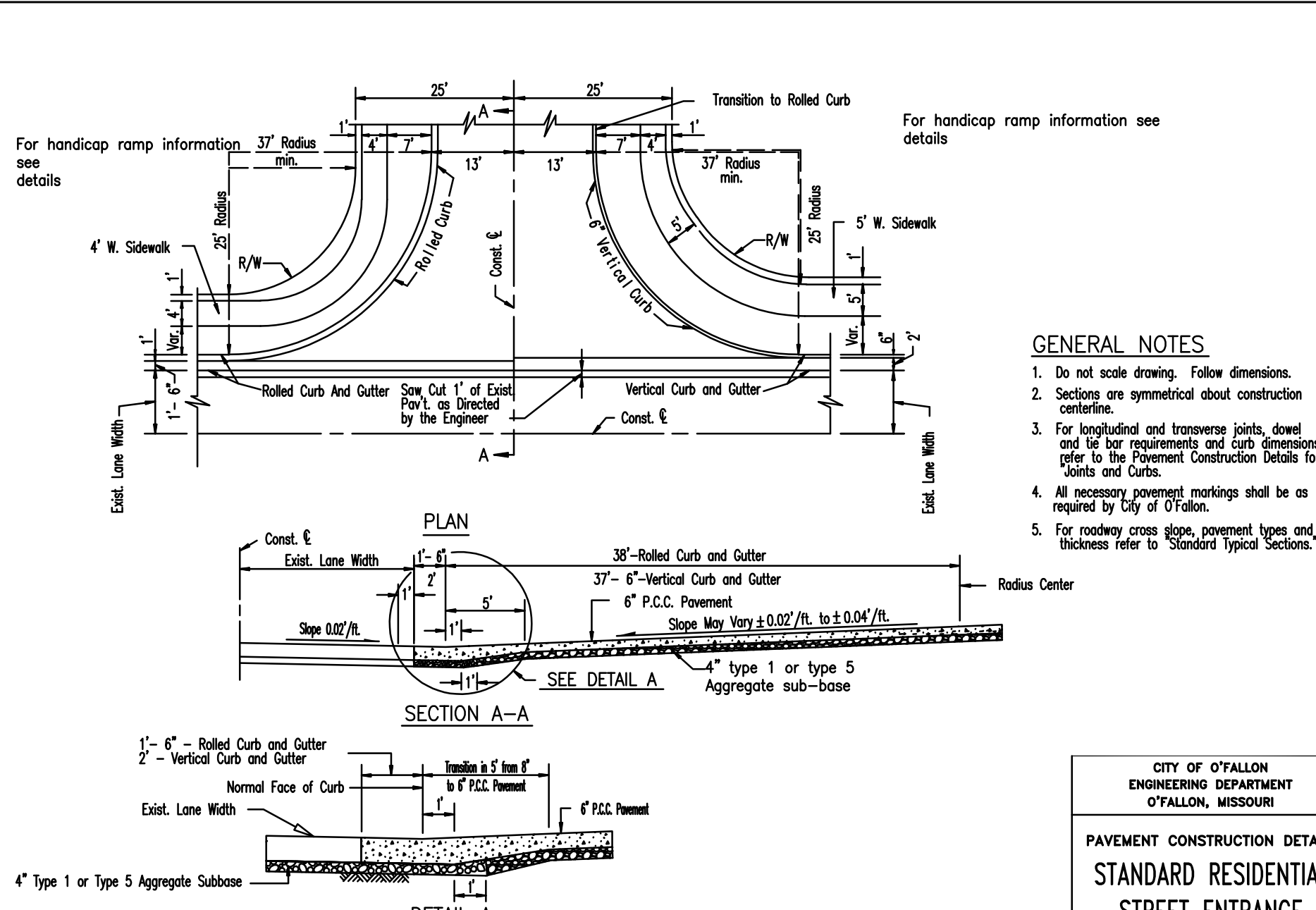
	ROW Width	Pavement Width	Lane Width	No. of Drive Lanes	Utility Easement	Design Speed
Minor Arterial	84	60	12	5	10	40
Collector	60	39	12	3	10	35
Residential Collector	56	32**	N/A	2	10	25
Minor Residential Local Access	50	26	N/A	2	10	25*

Notes:  
 \* = Can be varied with City Engineer's approval  
 \*\* = Detail to match minor residential street with wider pavement - these requirements may be varied by other City ordinances  
 - these standards are minimum standards  
 - Parkway options can be provided as indicated above

PREPARED FOR:  
**BRINKMANN CONSTRUCTORS**  
 CONTACT: JACOB ENGLERT  
 16650 CHESTERFIELD GROVE RD, SUITE 100  
 CHESTERFIELD, MO 63005  
 PH: (636) 537-9700  
 E: JEnglert@brinkmannconstructors.com

Designer will provide roadway cross section and joint locations in a separate detail drawing.

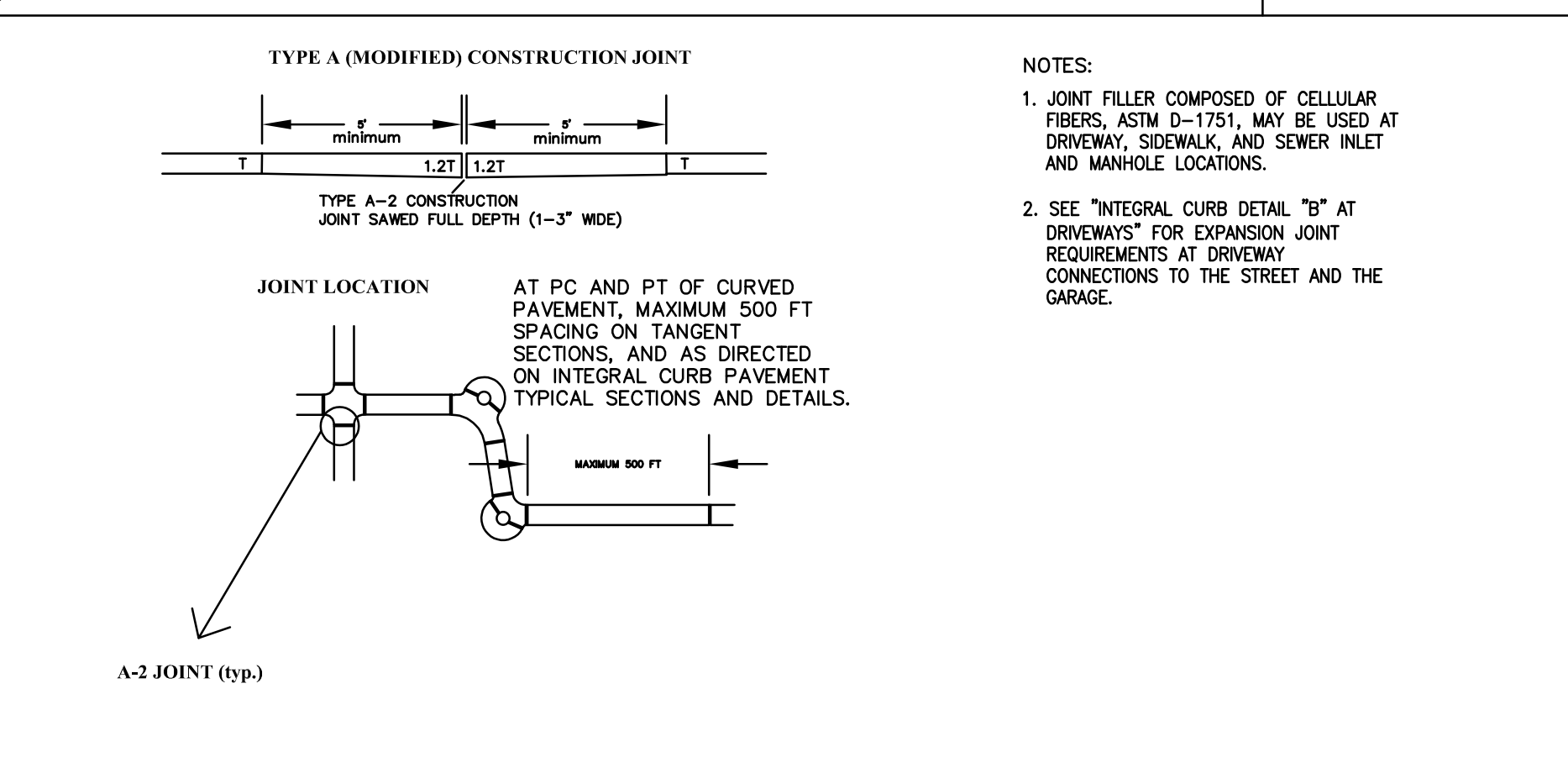
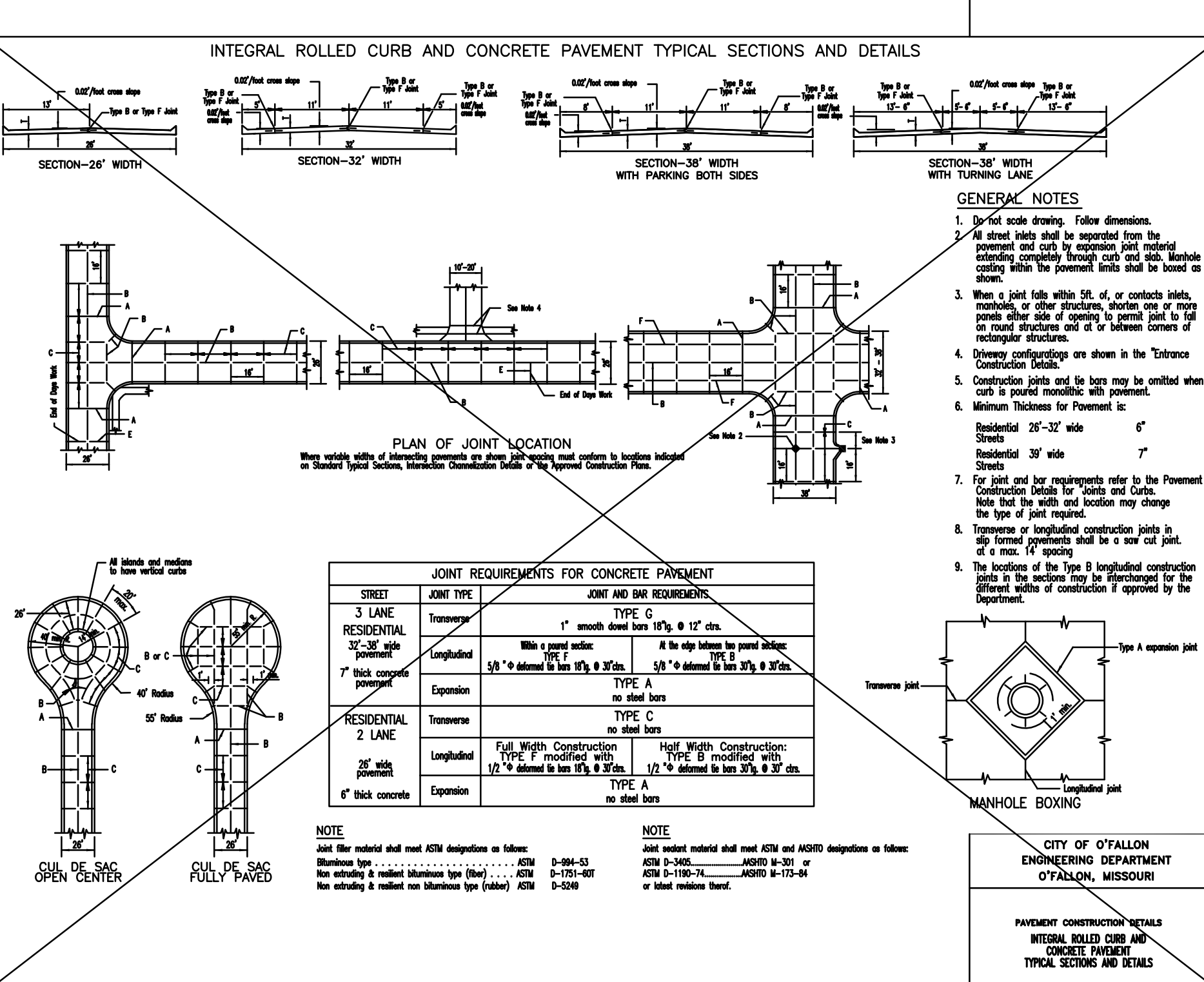
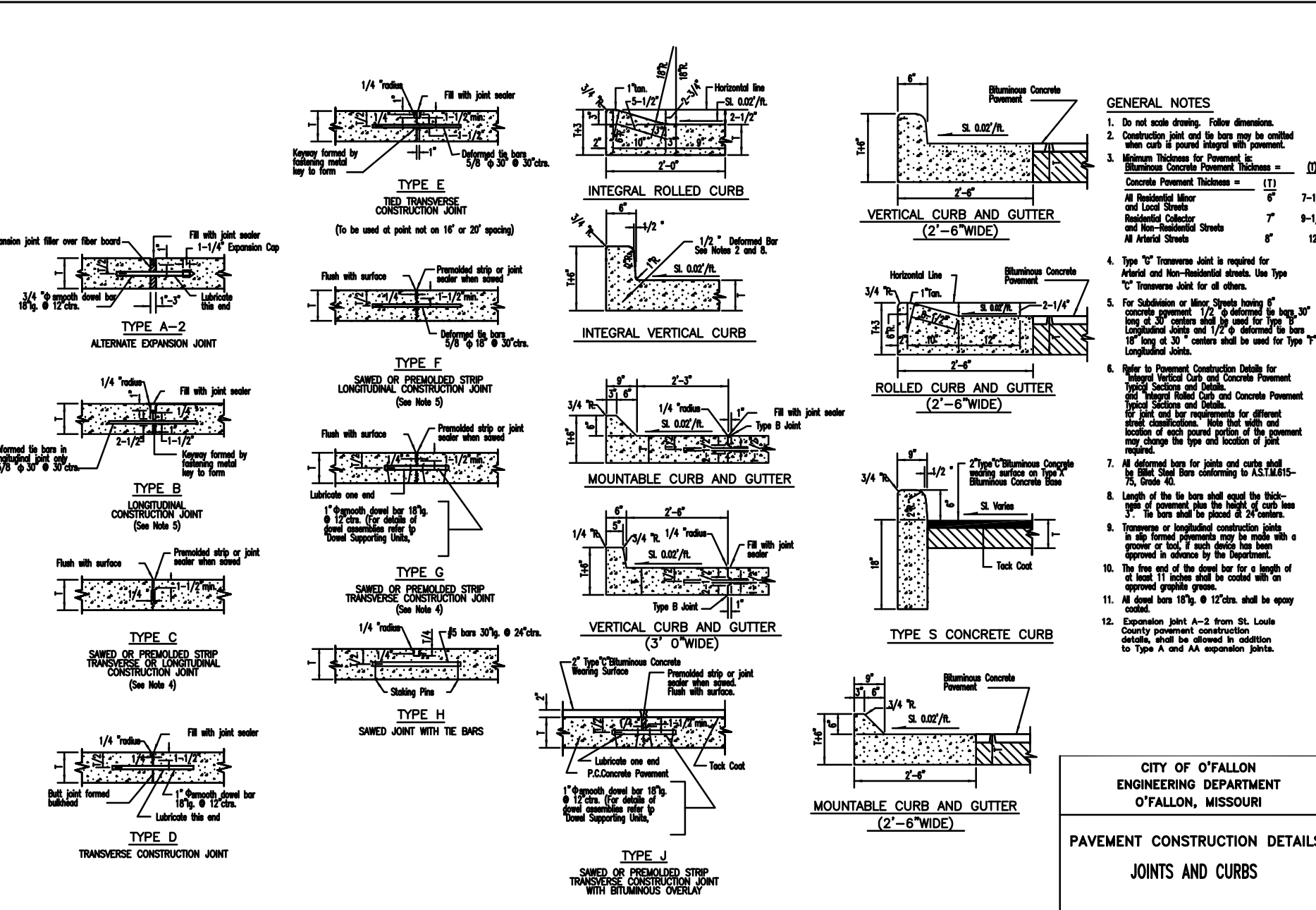
CITY OF O'FALLON  
 ENGINEERING DEPARTMENT  
 O'FALLON, MISSOURI  
 Typical Pavement Design  
 SECTION NO. 405.870



GENERAL NOTES  
 1. Do not scale drawings. Follow dimensions.  
 2. Sections are symmetrical about construction centerline.  
 3. For longitudinal and transverse joints, dowels and bar requirements and curb dimensions refer to the Pavement Construction Details for Joints and Curbs.  
 4. All necessary pavement markings shall be as required by City of O'Fallon.  
 5. For roadway cross slopes, pavement types and thickness refer to Standard Typical Sections.

FOR HANDICAP RAMP INFORMATION SEE DETAILS

CITY OF O'FALLON  
 ENGINEERING DEPARTMENT  
 O'FALLON, MISSOURI  
 PAVEMENT CONSTRUCTION DETAILS  
 STANDARD RESIDENTIAL STREET ENTRANCE  
 SECTION NO. 505.090



GENERAL NOTES  
 1. Do not scale drawings. Follow dimensions.  
 2. All street joints shall be separated from the pavement and curb by expansion joint material extending completely through curb and sidewalk. Manhole coating inside the pavement limits shall be bonded as shown.  
 3. When a joint falls within 6ft. of a concrete curb, manhole, or other structure, shorten one or more joints either side of concrete to permit joint to fall on road structure and not at or between corners of rectangular structure.  
 4. Driveway configurations are shown in the Entrance Construction Details.  
 5. Construction joints and tie bars may be omitted when curb is poured monolithic with pavement.  
 6. Minimum thickness for Pavement is:  
 Residential 25'-32' wide 7" Streets  
 Residential 33' wide 8" Streets  
 For joint and bar requirements refer to the Pavement Construction Details for Joints and Curbs. Note that the width and location may change the type of joint required.  
 7. Transverse or longitudinal construction joints in sidewalk pavements shall be a saw cut joint, 1/8" deep.  
 8. The location of the Type B longitudinal construction joint in sidewalk pavements shall be different widths of construction if approved by the Department.  
 9. The location of the Type B longitudinal construction joint in sidewalk pavements shall be different widths of construction if approved by the Department.

MANHOLE BOXING

CITY OF O'FALLON  
 ENGINEERING DEPARTMENT  
 O'FALLON, MISSOURI  
 PAVEMENT CONSTRUCTION DETAILS  
 INTEGRAL ROLLED CURB AND CONCRETE PAVEMENT TYPICAL SECTIONS AND DETAILS  
 SECTION NO. 505.090

PAVEMENT CONSTRUCTION DETAILS  
 INTEGRAL ROLLED CURB AND CONCRETE PAVEMENT TYPICAL SECTIONS AND DETAILS  
 SECTION NO. 505.090