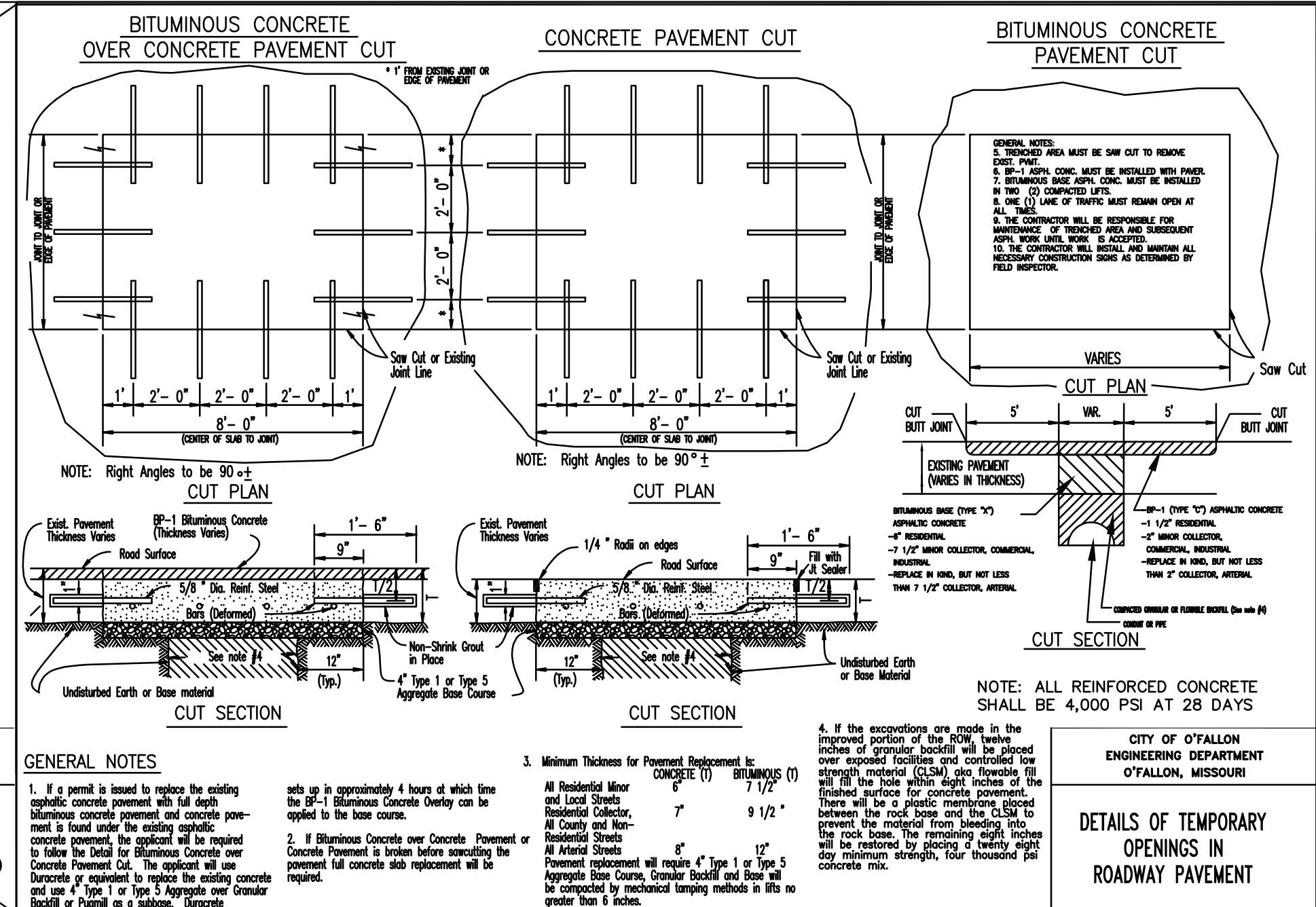


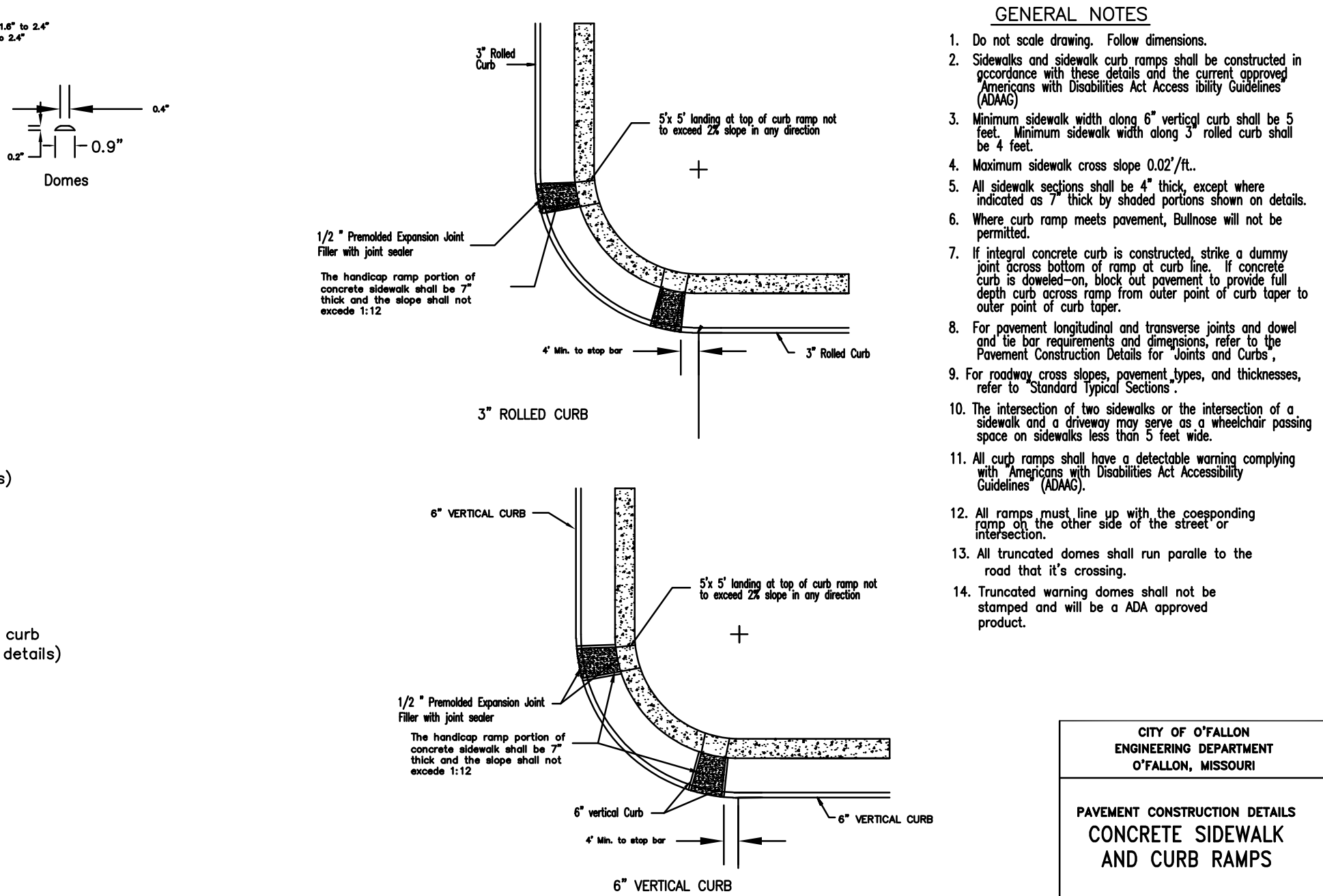
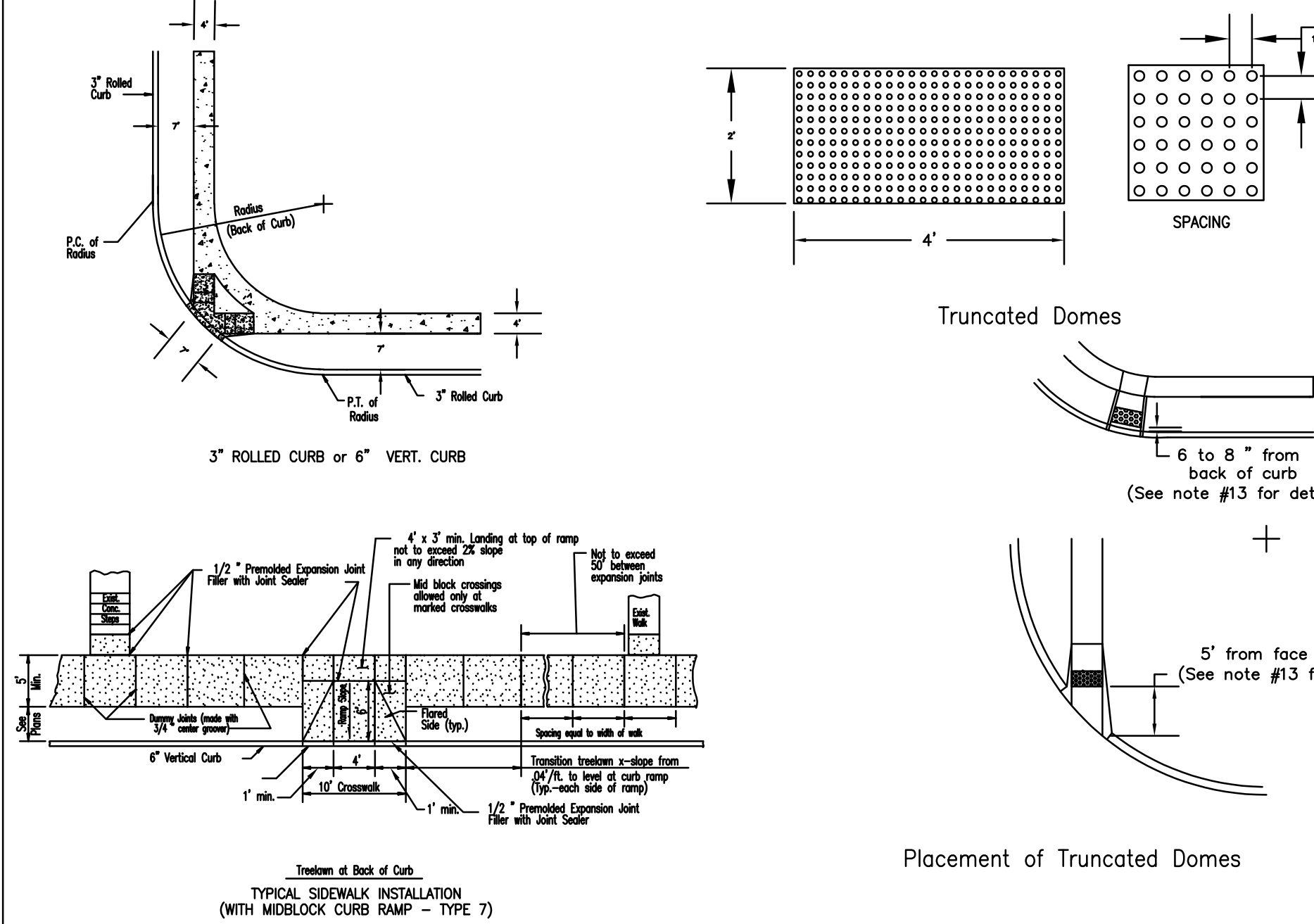
GENERAL NOTES

- Do not scale drawing. Follow dimensions.
- For longitudinal and transverse joints, dowel and tie bar requirements and curb dimensions not shown refer to the Government Construction Details for Joints and Curbs.
- All necessary pavement markings shall be as required by MO DOT.
- For roadway cross slopes, pavement types and thicknesses refer to Standard Typical Sections.
- Permits will not be issued for building construction on lots abutting a temporary turnaround unless and until the turnaround is actually constructed.
- The removal of the temporary turnaround surface, the restoration of the disturbed ground, and the extension of any sidewalk shall be the responsibility of the party(ies) that will be extending the street.
- Other temporary turn-around types can be considered depending on type and dimensions.
- Stub streets over two hundred fifty (250) feet shall have a minimum temporary turnaround pavement radius of forty (40) feet, covered by a temporary turnaround easement to remain until the road is extended and plotted in lieu of turnarounds, the Planning and Zoning Commission may approve a "T" or "Y" shaped paved space on streets which are less than two hundred fifty (250) feet in length and are planned to be extended in the future.



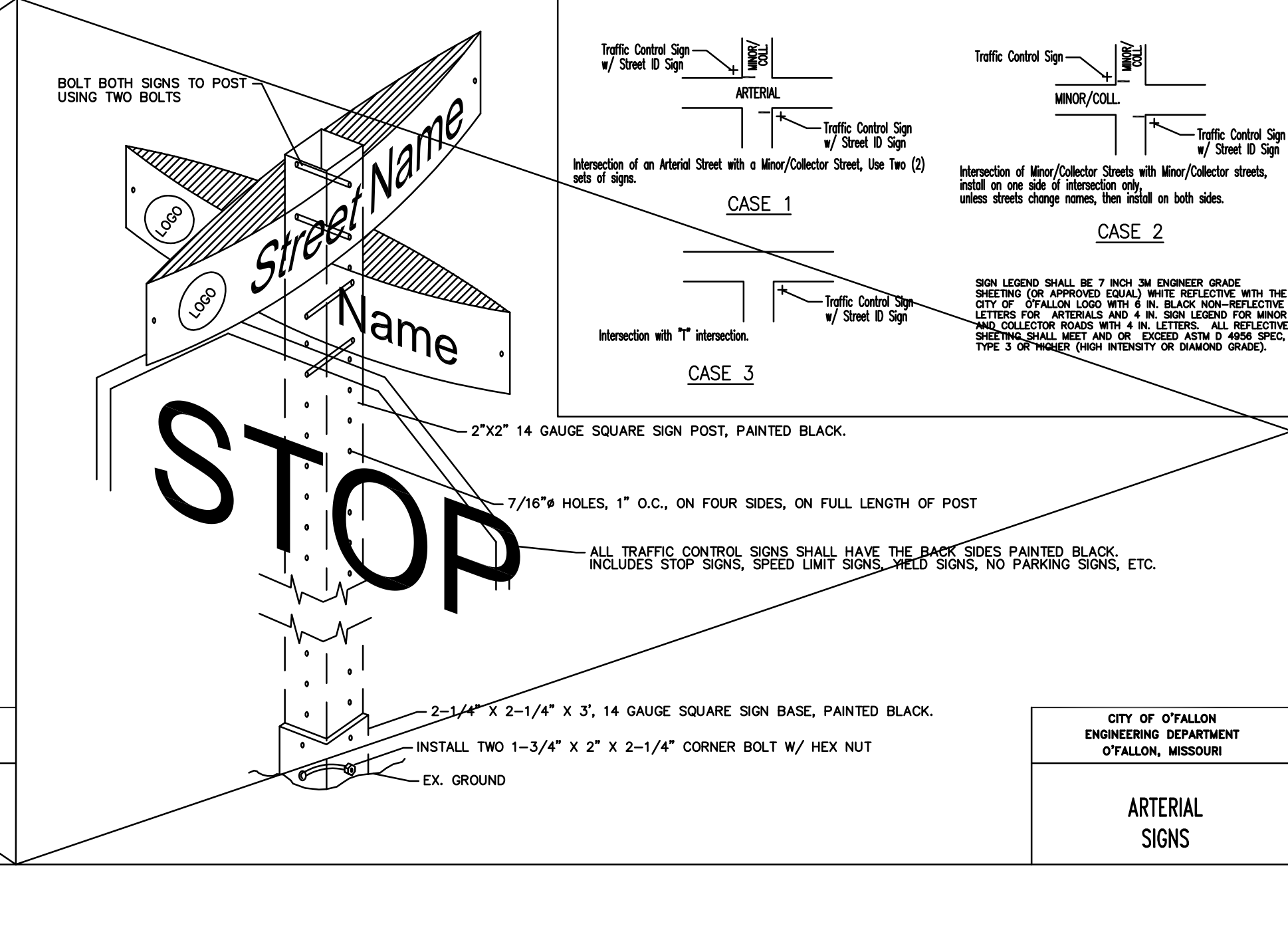
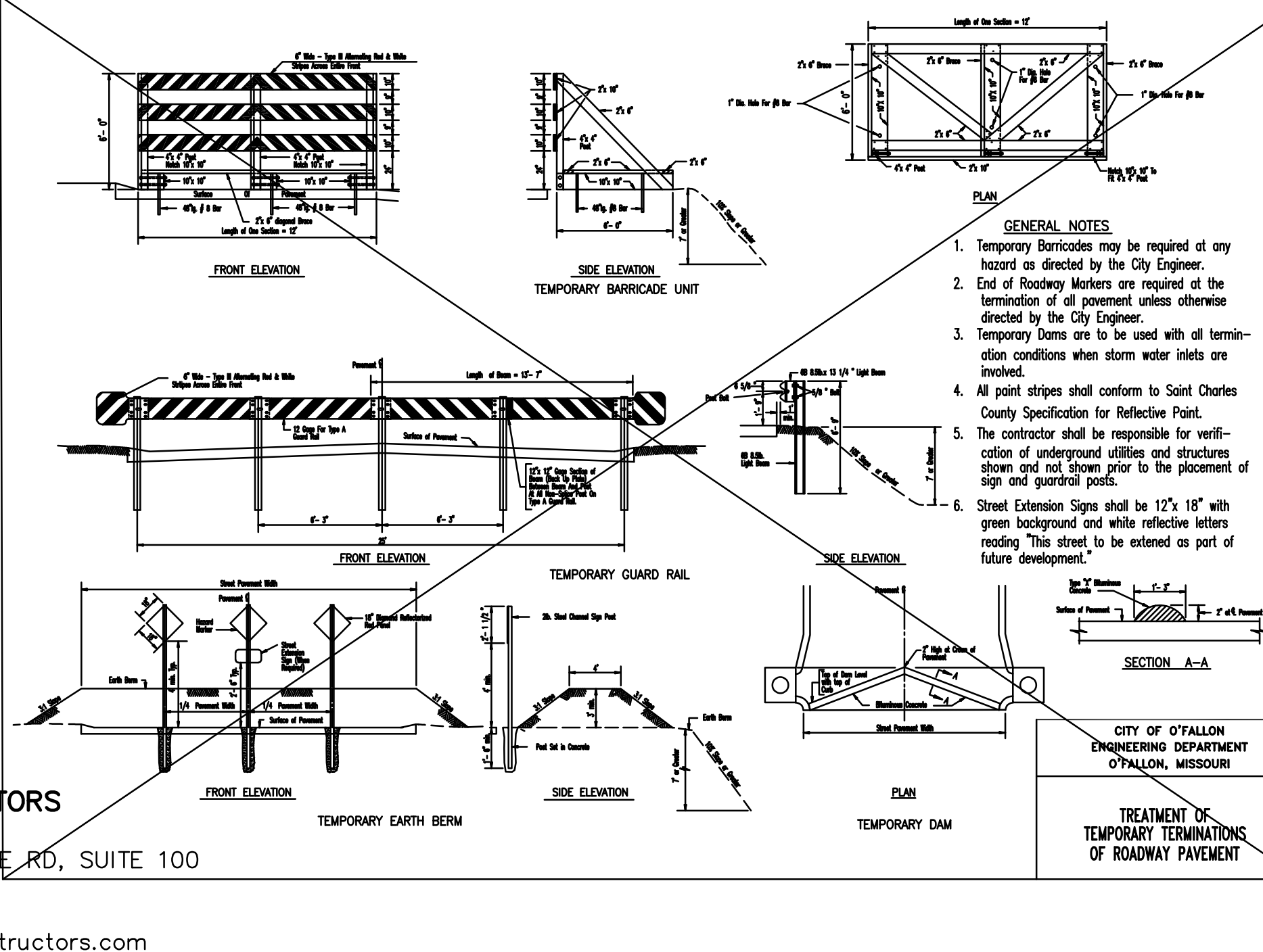
GENERAL NOTES

- If a permit is issued to replace the existing asphalt concrete pavement with full depth bituminous concrete pavement and concrete pavement, the applicant will be required to follow the Detail for Bituminous Concrete over Concrete Pavement Cut. The applicant will use bituminous or aggregate to replace the existing concrete and use Type 1 or Type 5 Aggregate over Concrete Backfill or Paving in a subbase. (Concrete sets up in approximately 4 hours of which the 4" Bituminous Concrete Overlay can be applied to the base course.)
- If Bituminous Concrete over Concrete Pavement is broken before accepting the pavement full concrete replacement will be required.
- Minimum Thickness for Pavement Replacement to CONCRETE (1) Bituminous (1) All Residential Minor and Local Streets Standard Collector, All Curbs and Non-Residential Streets All Arterial Streets Pavement replacement will require 4" Type 1 or Type 5 Aggregate Base Course, Concrete Backfill and Base will be completed by mechanical laying methods in lifts no greater than 6 inches.



GENERAL NOTES

- Do not scale drawing. Follow dimensions.
- Sidewalks and sidewalk curb ramps shall be constructed in accordance with these details and the current approved provisions with Disabilities Act Accessible Guidelines (ADAAG).
- Minimum sidewalk width along 6" vertical curb shall be 5 feet. Minimum sidewalk width along 3" rolled curb shall be 4 feet.
- Maximum sidewalk cross slope 0.02'/ft.
- All sidewalk sections shall be 4" thick, except where indicated as 7" thick by shaded portions shown on details.
- Where curb ramp meets pavement, Bullnose will not be permitted.
- If integral concrete curb is constructed, strike a dummy joint across bottom of ramp at curb line. If concrete curb is down-on-block out pavement to provide full depth curb across ramp from outer point of curb taper to outer point of curb taper.
- For pavement longitudinal and transverse joints and dowel and tie bar requirements and dimensions refer to the Government Construction Details for Joints and Curbs.
- For roadway cross slopes, pavement types, and thicknesses, refer to "Standard Typical Sections".
- The intersection of two sidewalks or the intersection of a sidewalk and a driveway may serve as a wheelchair passing space on sidewalks less than 5' feet wide.
- All curb ramps shall have a detectable warning complying with Americans with Disabilities Act Accessibility Guidelines (ADAAG).
- All ramps must line up with the corresponding ramp on the other side of the street or intersection.
- All truncated domes shall run parallel to the road that it's crossing.
- Truncated warning domes will be ADA approved product.

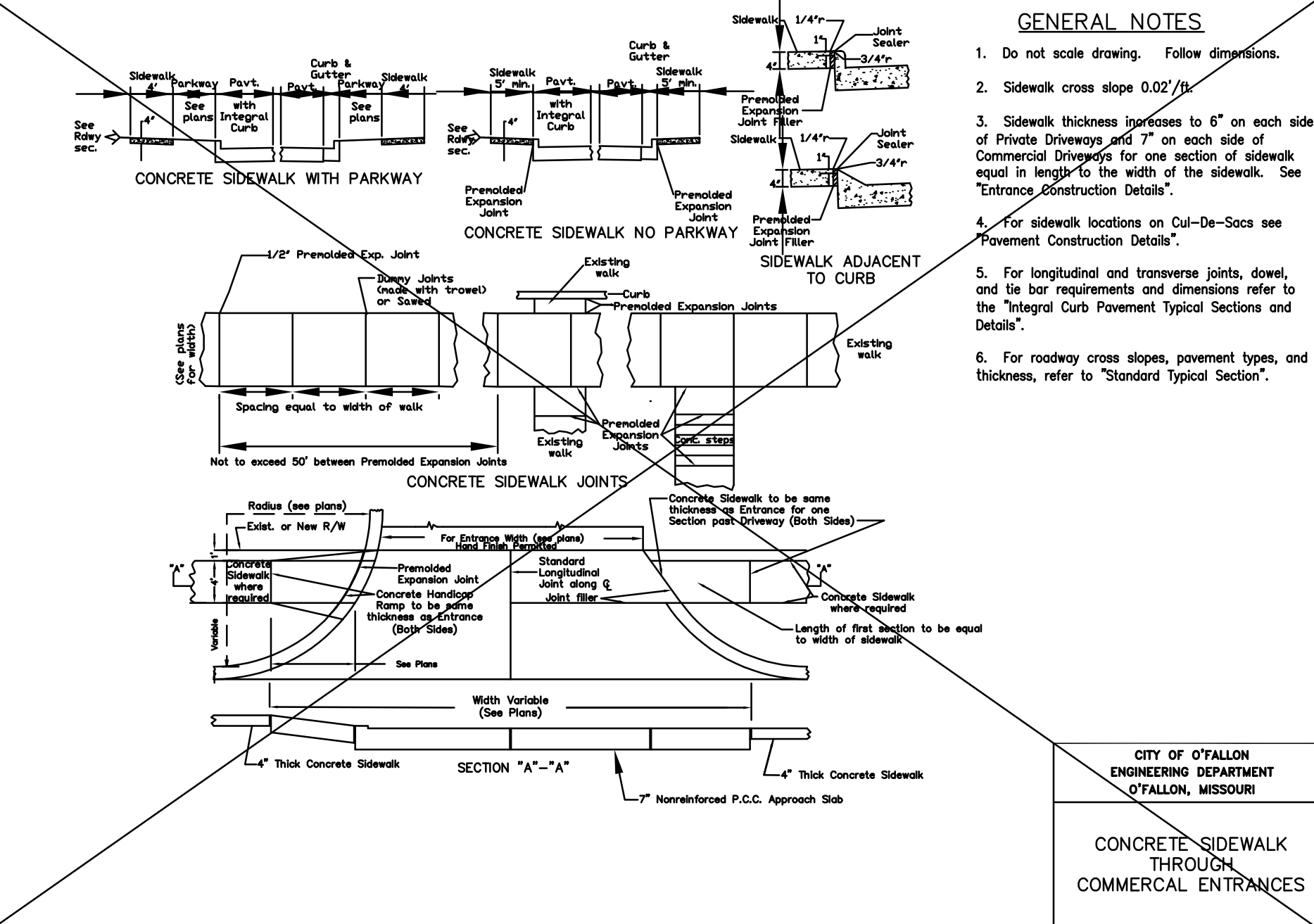
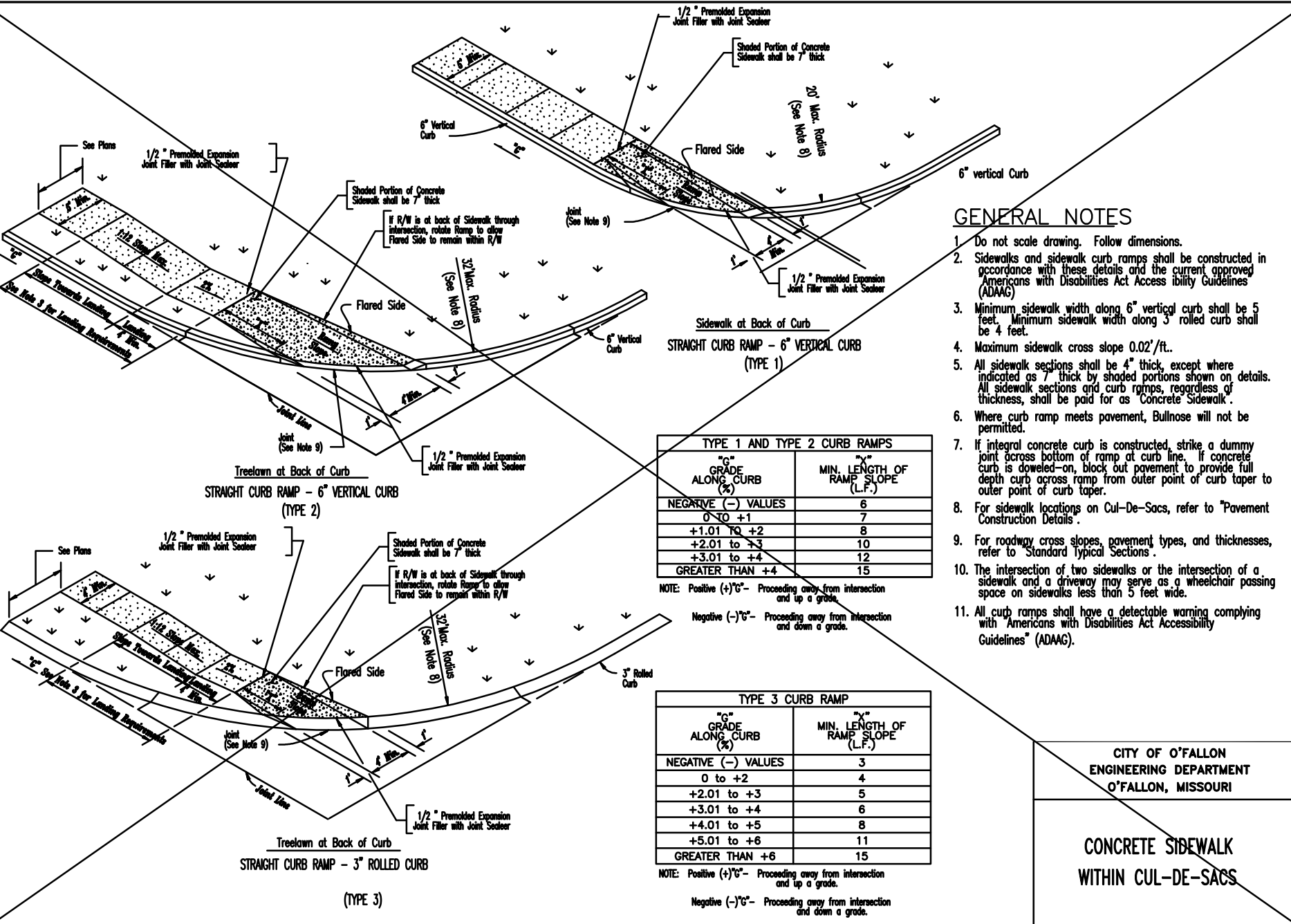


GENERAL NOTES

- All sign locations and sizes must be approved by the ENGINEERING DIVISION PRIOR TO INSTALLATION.
- STREET NAME SIGN PLATES SHALL BE 8 INCHES WIDE FLAT, BOLT TOGETHER FOR ANY ARTERIAL INTERSECTIONS AND 6 INCHES WIDE EXTRUDED ALUMINUM PANELS FOR ALL MINOR AND COLLECTOR ROADS. TYPICAL LENGTHS FOR MINOR AND COLLECTOR SIGNS SHALL BE 24, 30, & 36 INCH LENGTHS, OR LONGER AS NEEDED, TO ACCOMMODATE STREET NAME.
- Sign legends shall be 7" HIGH IN ENGINEER GRADE SHEETING (OR APPROVED EQUAL) WHITE REFLECTIVE WITH THE CITY OF O'FALLON LOGO WITH 8 IN. BLACK NON-REFLECTIVE LETTERS FOR ARTERIALS AND 4 IN. SIGN LEGENDS FOR MINOR AND COLLECTOR ROADS WITH 4 IN. LETTERS. ALL REFLECTIVE SHEETING SHALL MEET AND EXCEED ASTM D 4856 SPEC. TYPE 3 OR HIGHER (HIGH INTENSITY OR DIAMOND GRADE).
- "CLEARVIEW" FONT SHALL BE USED ON ALL STREET SIGNS.
- SIGN POSTS SHALL BE HEAVY "U" CHANNEL (3 LBS/FT) PAINTED BLACK STEEL POSTS FOR COLLECTOR/MINOR STREETS. ARTERIAL STREETS SHALL HAVE 2" SQUARE SIGN POSTS SHALL EXTEND A MINIMUM OF 30 INCHES IN THE GROUND AND BE AN ANGLE OF 45 DEGREES TO THE GRADE.
- THE CONTRACTOR SHALL BE RESPONSIBLE FOR VERIFICATION OF UNDERGROUND UTILITIES AND STRUCTURES SHOWN ON NOT SHOWN. PLEASE CONTACT CITY FOR LOCATION OF CITY UTILITIES NOT SHOWN BY SITE SURVEY.
- SIGNS SHALL NOT CREATE A SITE DISTANCE PROBLEM OR OBSTRUCT PROXIMATE TRAFFIC.
- SPEED LIMIT SIGNS MUST BE AT EVERY ENTRANCE TO A SUBDIVISION ALONG THE LINE BETWEEN FIRST AND SECOND LOT AND APPROXIMATELY EVERY TWO THOUSAND (2000) FEET THEREAFTER. ALSO, EVERY CONNECTING SIDE STREET MUST HAVE ONE SPEED LIMIT SIGN APPROXIMATELY FIFTY FEET FROM INTERSECTION AND APPROXIMATELY EVERY TWO THOUSAND FEET (2000) THEREAFTER.
- ALL SIGNS UNLESS OTHERWISE STATED, SHOULD BE CONSTRUCTED AND INSTALLED PER MUTOR.

PREPARED FOR:
BRINKMANN CONSTRUCTORS
CONTACT: JACOB ENGLERT
16650 CHESTERFIELD GROVE RD, SUITE 100
CHESTERFIELD, MO 63005
PH: (636) 537-9700
E: JEnglert@brinkmannconstructors.com

CITY OF O'FALLON
ENGINEERING DEPARTMENT
O'FALLON, MISSOURI



GENERAL NOTES

- All sign locations and sizes must be approved by the ENGINEERING DIVISION PRIOR TO INSTALLATION.
- STREET NAME SIGN PLATES SHALL BE 8 INCHES WIDE FLAT, BOLT TOGETHER FOR ANY ARTERIAL INTERSECTIONS AND 6 INCHES WIDE EXTRUDED ALUMINUM PANELS FOR ALL MINOR AND COLLECTOR ROADS. TYPICAL LENGTHS FOR MINOR AND COLLECTOR SIGNS SHALL BE 24, 30, & 36 INCH LENGTHS, OR LONGER AS NEEDED, TO ACCOMMODATE STREET NAME.
- Sign legends shall be 7" HIGH IN ENGINEER GRADE SHEETING (OR APPROVED EQUAL) WHITE REFLECTIVE WITH THE CITY OF O'FALLON LOGO WITH 8 IN. BLACK NON-REFLECTIVE LETTERS FOR ARTERIALS AND 4 IN. SIGN LEGENDS FOR MINOR AND COLLECTOR ROADS WITH 4 IN. LETTERS. ALL REFLECTIVE SHEETING SHALL MEET AND EXCEED ASTM D 4856 SPEC. TYPE 3 OR HIGHER (HIGH INTENSITY OR DIAMOND GRADE).
- "CLEARVIEW" FONT SHALL BE USED ON ALL STREET SIGNS.
- SIGN POSTS SHALL BE HEAVY "U" CHANNEL (3 LBS/FT) PAINTED BLACK STEEL POSTS FOR COLLECTOR/MINOR STREETS. ARTERIAL STREETS SHALL HAVE 2" SQUARE SIGN POSTS SHALL EXTEND A MINIMUM OF 30 INCHES IN THE GROUND AND BE AN ANGLE OF 45 DEGREES TO THE GRADE.
- THE CONTRACTOR SHALL BE RESPONSIBLE FOR VERIFICATION OF UNDERGROUND UTILITIES AND STRUCTURES SHOWN ON NOT SHOWN. PLEASE CONTACT CITY FOR LOCATION OF CITY UTILITIES NOT SHOWN BY SITE SURVEY.
- SIGNS SHALL NOT CREATE A SITE DISTANCE PROBLEM OR OBSTRUCT PROXIMATE TRAFFIC.
- SPEED LIMIT SIGNS MUST BE AT EVERY ENTRANCE TO A SUBDIVISION ALONG THE LINE BETWEEN FIRST AND SECOND LOT AND APPROXIMATELY EVERY TWO THOUSAND (2000) FEET THEREAFTER. ALSO, EVERY CONNECTING SIDE STREET MUST HAVE ONE SPEED LIMIT SIGN APPROXIMATELY FIFTY FEET FROM INTERSECTION AND APPROXIMATELY EVERY TWO THOUSAND FEET (2000) THEREAFTER.
- ALL SIGNS UNLESS OTHERWISE STATED, SHOULD BE CONSTRUCTED AND INSTALLED PER MUTOR.

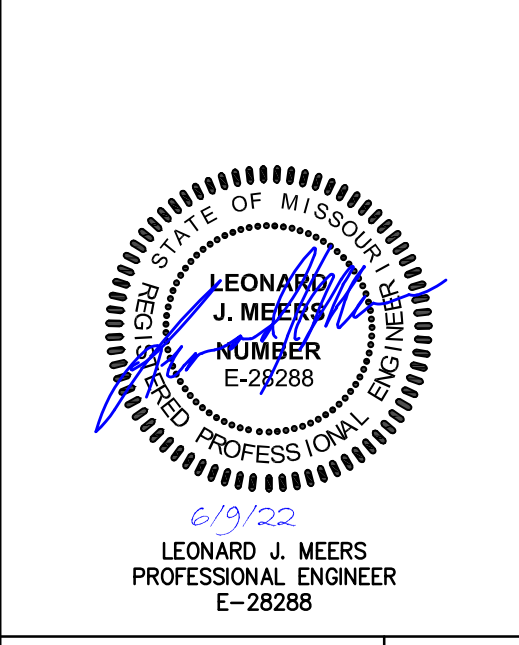
CITY OF O'FALLON
ENGINEERING DEPARTMENT
O'FALLON, MISSOURI

NO.	DESCRIPTION	DATE
1	CITY COMMENTS	02-24-2022
2	CITY/UTIL COMMENTS	03-14-2022

PROJECT TITLE
O'FALLON U-HAUL
1200 S. OUTER ROAD O'FALLON, MO 63366

GRIMES CONSULTING, INC.
Civil Engineering & Surveying Services
GRIMES CONSULTING, INC.
PROFESSIONAL ENGINEERING CORPORATION, E-1470-D
PROFESSIONAL LAND SURVEYING CORPORATION, LS-343-D
www.grimesconsulting.com

12300 OLD TESSON ROAD
SUITE 3000
JACKSON, MO 64318
PH. (314) 849-6100
PH. (314) 849-6010
FAX (314) 849-6010



LEONARD J. MEERS
PROFESSIONAL ENGINEER
E-28288

Developer / Owner Information
UHAUL
CONTACT: MICHAEL WHITE
314-952-6203
Email: michael.white@uhaul.com

P4-Z No.
Approval Date:

City No.

Page No.
C8.4

SIGNS, DETAILS AND LOCATIONS