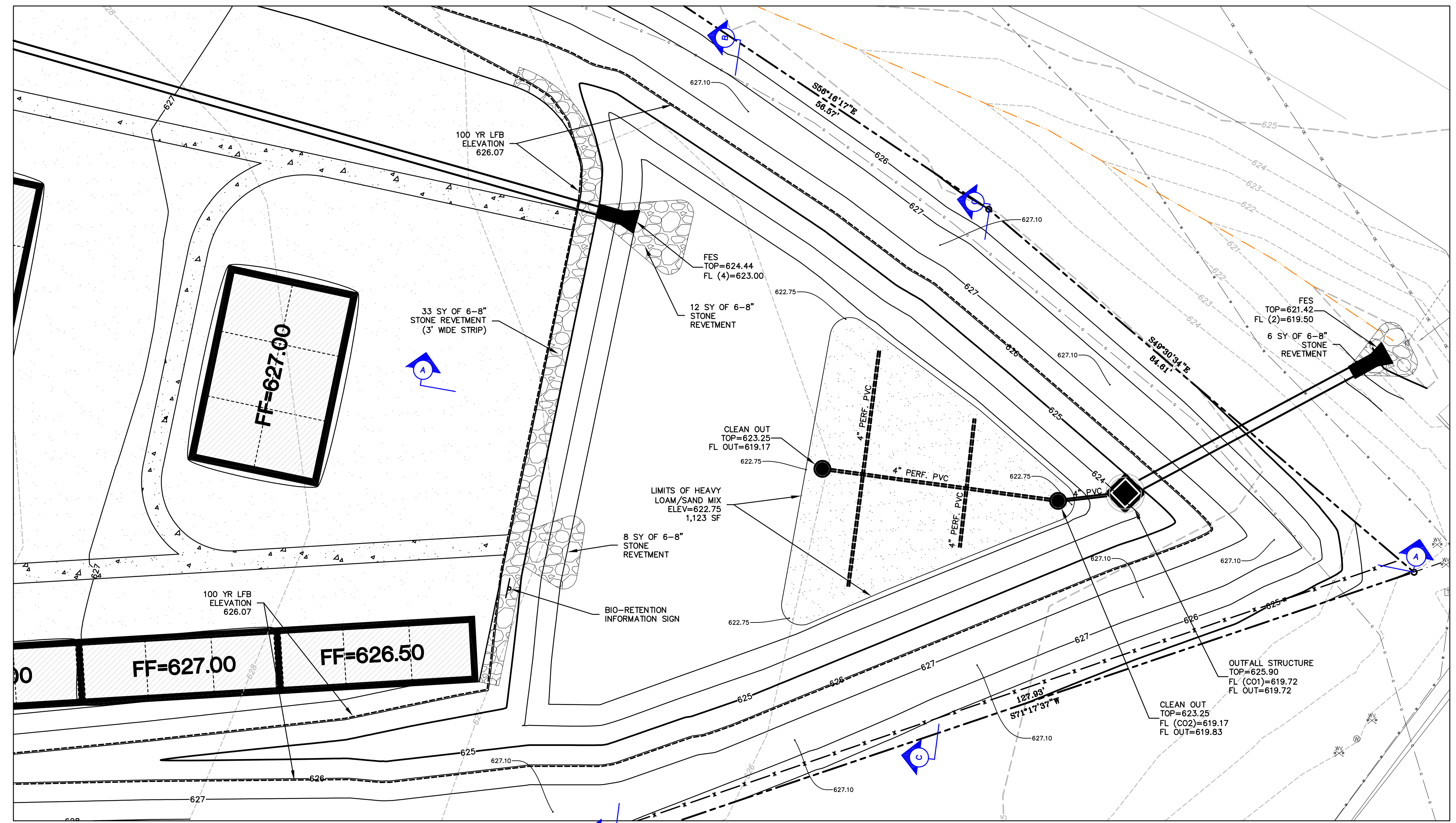


**1 BIO-RETENTION B**  
C8.7 SCALE: NTS

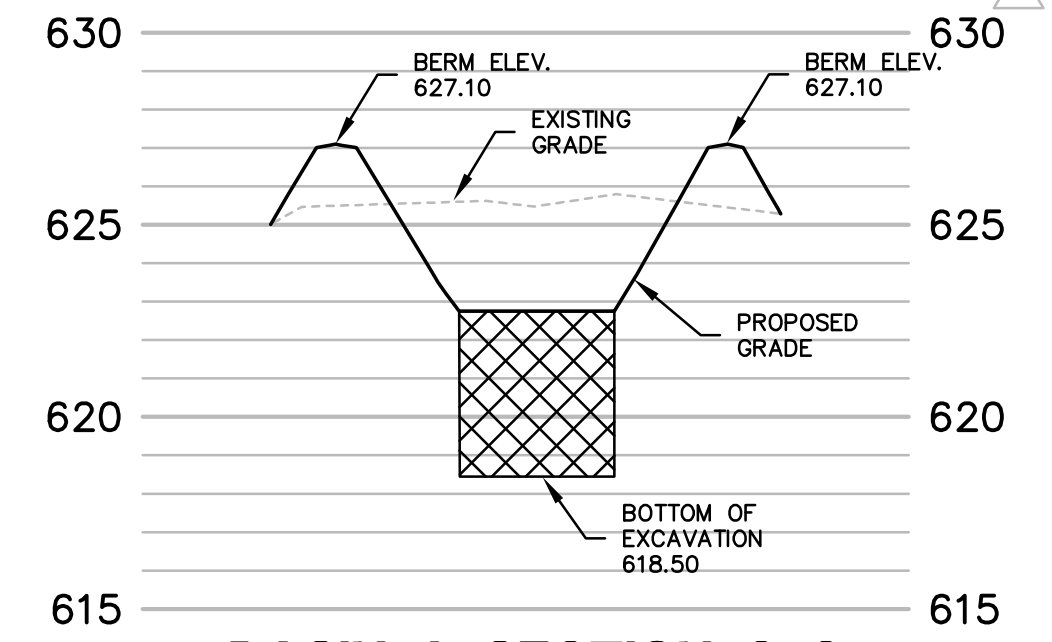
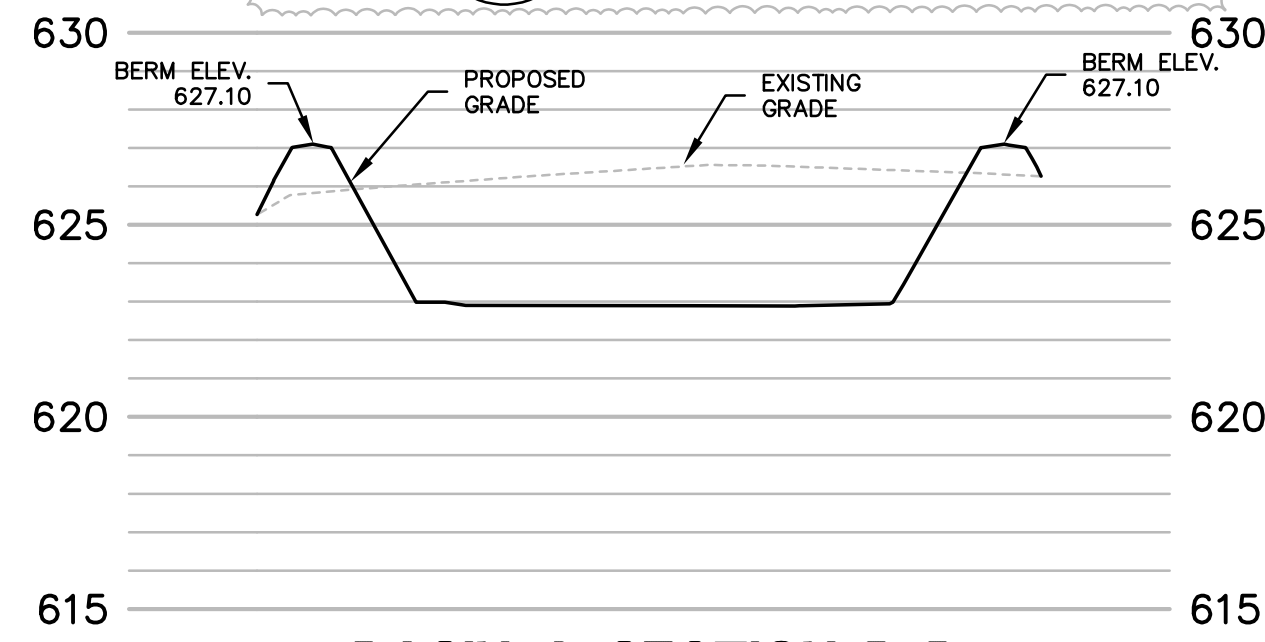
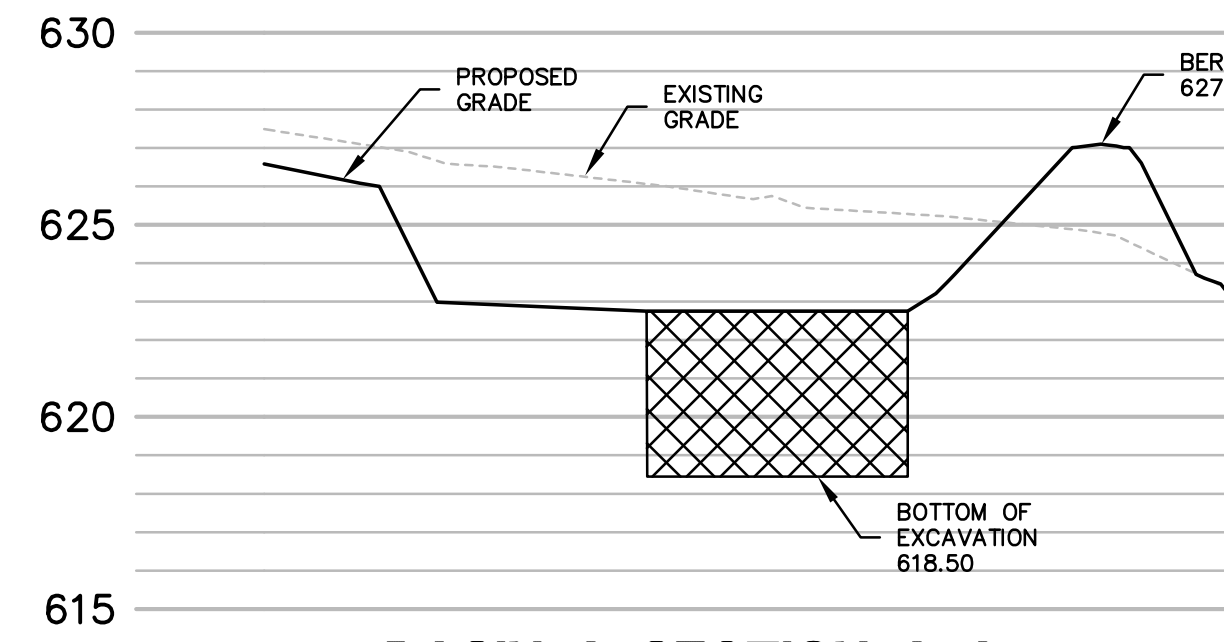


**2 BIO-RETENTION A**  
C8.7 SCALE: NTS

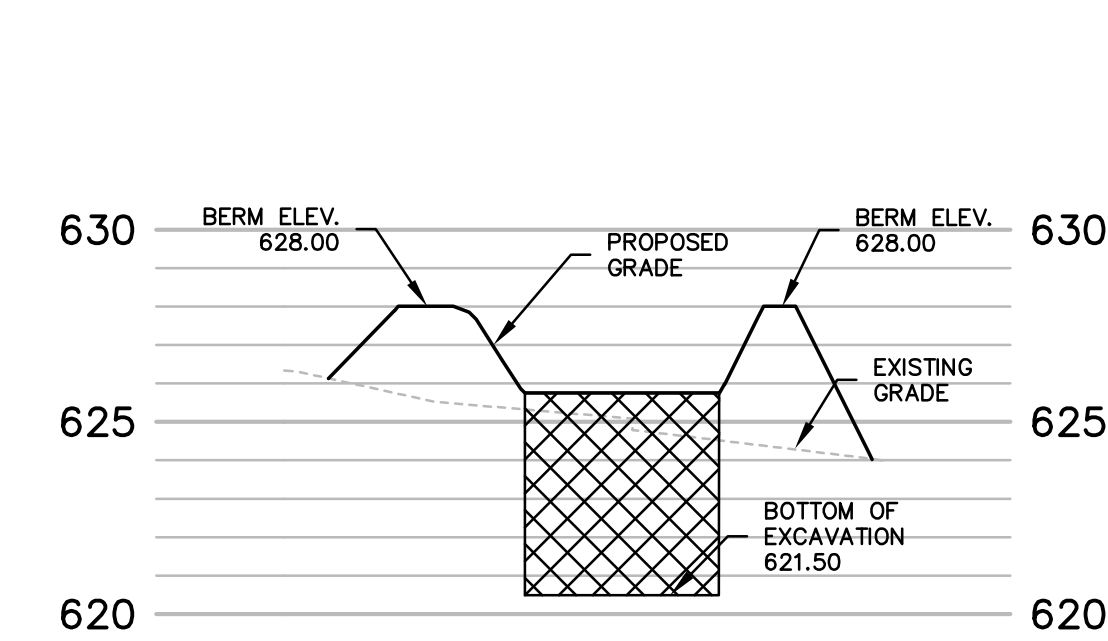
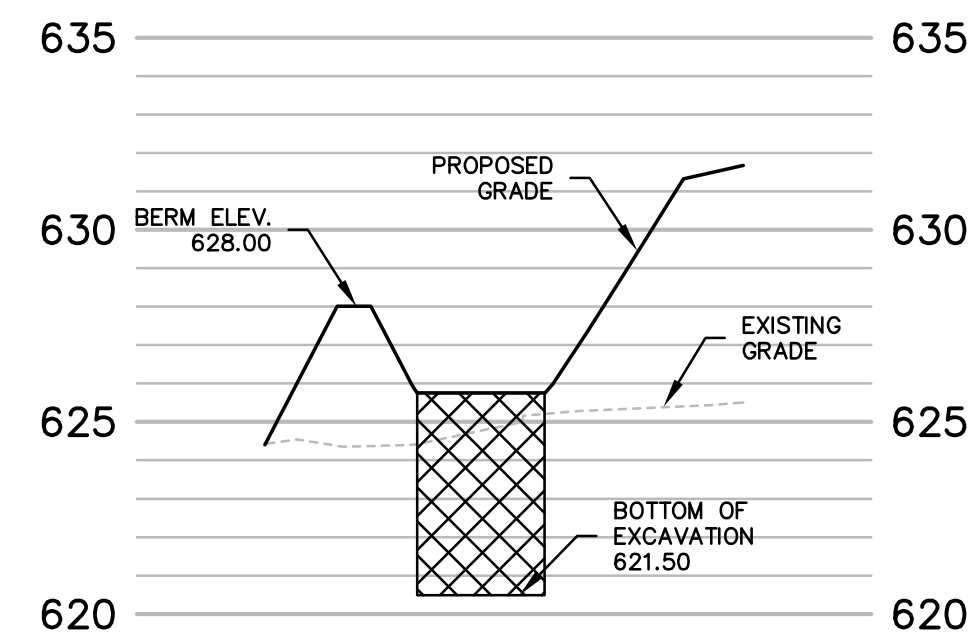
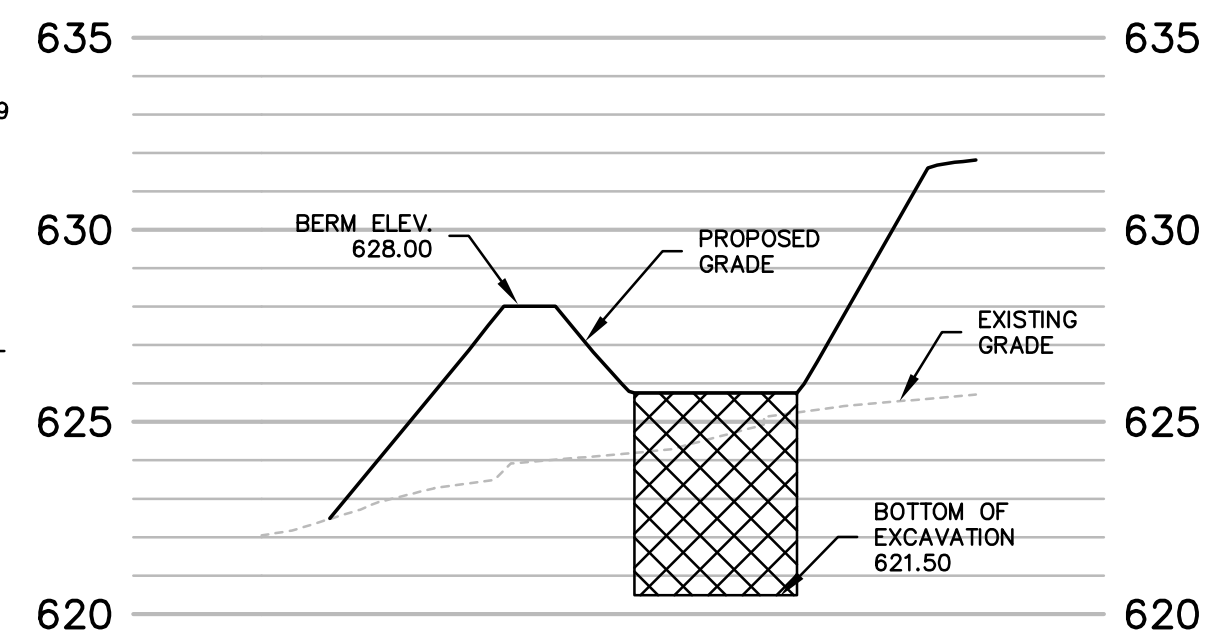
**SEDIMENT BASIN CALCULATIONS**

	SEDIMENT BASIN #A	SEDIMENT BASIN #B
TRIBUTARY AREA:	1.71 AC	0.62 AC
APPROX. ANNUAL SEDIMENT STORAGE	140 CF/AC/YR	140 CF/AC/YR
REQUIRED STORAGE 2-YEAR	479 CF	174 CF
2-YEAR STORM	1.71 AC @ 2.39 cfs/AC	0.62 AC @ 2.39 cfs/AC
REQUIRED STORAGE	4.07 * 60sec * 30min	1.48 * 60sec * 30min
	7,356 CF	2,667 CF
TOTAL REQUIRED STORAGE	7,835 CF	2,841 CF
STORAGE PROVIDED	26,872 CF	3,380 CF

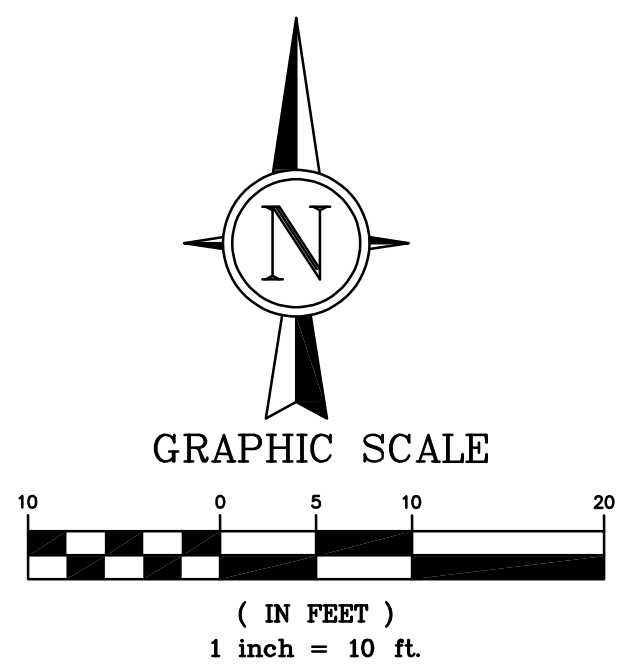
100 YR LFB  
HW ELEV = 626.07  
100 YR HW  
ELEV = 625.89  
25 YR HW  
ELEV = 625.54  
10 YR HW  
ELEV = 625.40  
2 YR HW  
ELEV = 624.73



100 YR LFB  
HW ELEV = 626.89  
100 YR HW  
ELEV = 626.89  
25 YR HW  
ELEV = 626.86  
10 YR HW  
ELEV = 626.84  
2 YR HW  
ELEV = 626.80



5 VERT.  
30 HORIZ.  
SCALE:

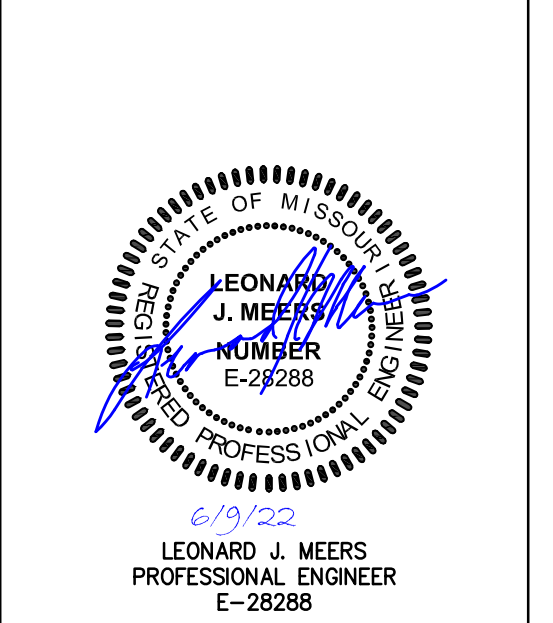


PREPARED FOR:  
**BRINKMANN CONSTRUCTORS**  
CONTACT: JACOB ENGLERT  
16650 CHESTERFIELD GROVE RD, SUITE 100  
CHESTERFIELD, MO 63005  
PH: (636) 537-9700  
E: JEnglert@brinkmannconstructors.com

NO.	DESCRIPTION	DATE
1	CITY COMMENTS	02-24-2022
2	CITY/UTIL COMMENTS	03-14-2022

**PROJECT TITLE**  
OFALLON  
U-HAUL  
1200 S. OUTER ROAD  
OFALLON, MO 63366

**GRIMES CONSULTING, INC.**  
Civil Engineering & Surveying Services  
GRIMES CONSULTING, INC.  
PROFESSIONAL ENGINEER CORPORATION, E-1470-D  
PROFESSIONAL LAND SURVEYING CORPORATION, LS-543-D  
12300 OLD TESSON ROAD  
SUITE 300A  
OFALLON, MO 63378  
PH: (314) 849-6100  
FAX: (314) 849-6010  
www.grimesconsulting.com



**Developer / Owner Information**  
UHAUL  
CONTACT: MICHAEL WHITE  
314-952-6203  
Email: michael\_white@uhaul.com

**P+Z No.**  
Approval Date:  
**City No.**  
**Page No.**  
**C8.7**

**BMP DETAILS**