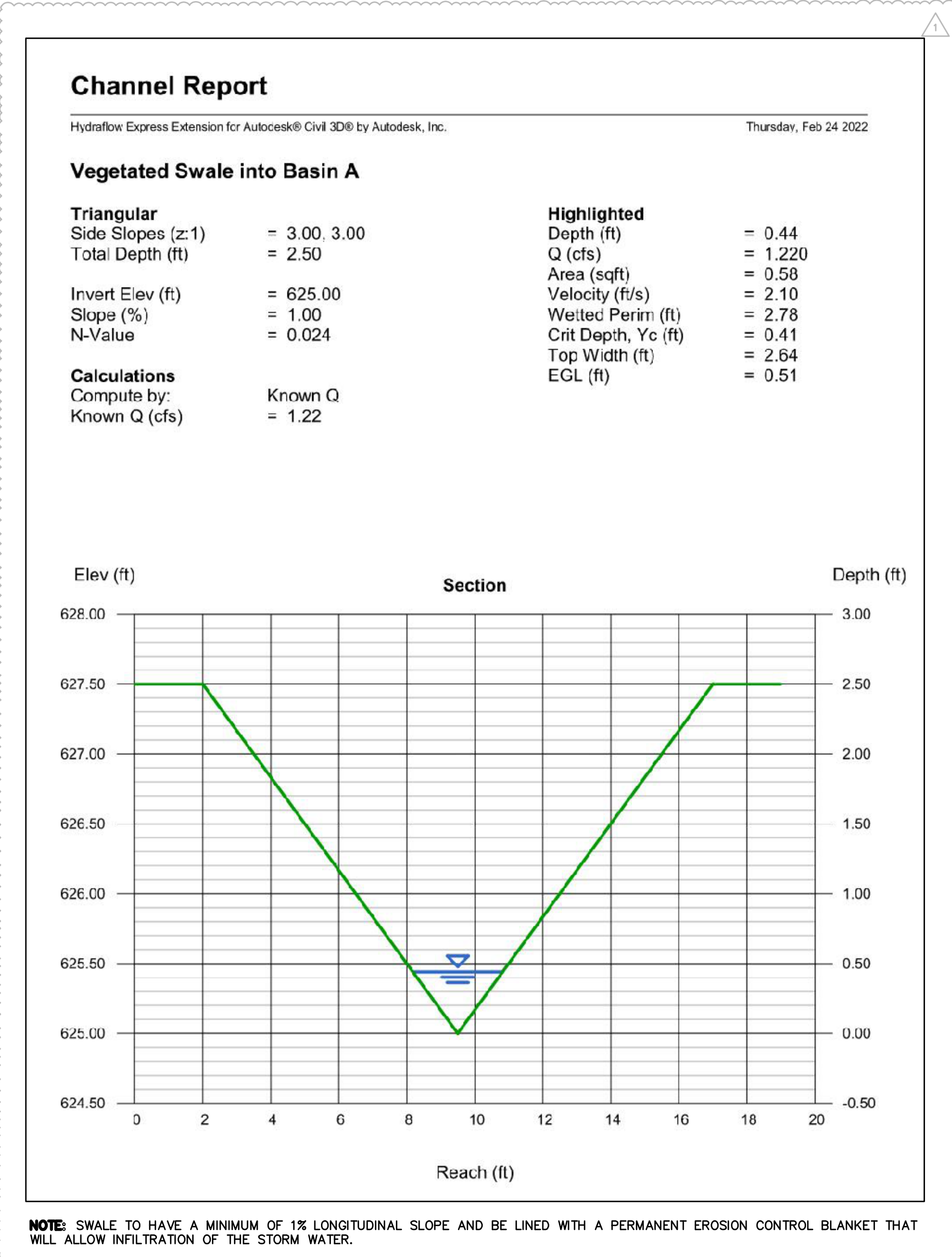


5  
VERT.  
30  
HORIZ.  
SCALE:

**NOTE:** ALL STRUCTURES AND FLARED END SECTIONS SHALL BE CONCRETE. HDPE PIPE WILL NOT BE ALLOWED FOR DETENTION BASIN OUTFLOWS OR FINAL PIPE RUN TO CREEK DISCHARGE.

**NOTE:** COMPACTED GRANULAR FILL IS REQUIRED BETWEEN SEWER/WATER MAIN PIPES AT EVERY LOCATION THAT PIPES CROSS OVER/UNDER OTHER PIPES.



## GRIMES CONSULTING, INC.

STRUCTURE		FLOWLINE		LENGTH	PIPE GRADE	PIPE SIZE	PPE	"n"	TOTAL Q	V	MINOR	ENERGY	HYD	HYD	LOWEST	FREEBOARD	PPE	DEPTH
LOWER	UPPER	PIPE ID	UPPER	LOWER	FT.	IN.	SHAPE	FACTOR	cfs	f.p.s.	LOSSES	LOSSES	UP	DOWN	OPENING****	FT.	CAPACITY	IN PIPE
1	2	P-2	619.72	619.50	44.91	18	Clr	0.013	5.09	2.95	0.10	0.10	621.19	621.00	625.90	4.71	7.35	1.37
6	7	P-7	622.74	622.55	38.89	12	Clr	0.013	1.88	2.43	0.07	0.10	623.71	623.55	626.65	2.94	2.50	0.90
4	11	P-11	625.18	624.15	109.65	8	Clr	0.013	0.28	0.80	0.01	0.06	626.33	626.26	629.00	2.67	1.17	0.67
5	10	P-10	625.02	624.56	92.68	12	Clr	0.013	0.14	0.17	0.00	0.00	626.30	626.30	628.00	1.70	2.59	1.01
4	5	P-5	624.56	624.15	82.48	15	Clr	0.013	1.20	0.98	0.01	0.03	626.30	626.26	628.00	1.70	4.54	1.25
3	4	P-4	624.15	623.00	231.83	15	Clr	0.013	1.76	1.43	0.02	0.17	626.28	626.07	628.40	2.14	4.55	1.25

NOTES: \*\* Critical Depth; -j-Line contain hyd jump

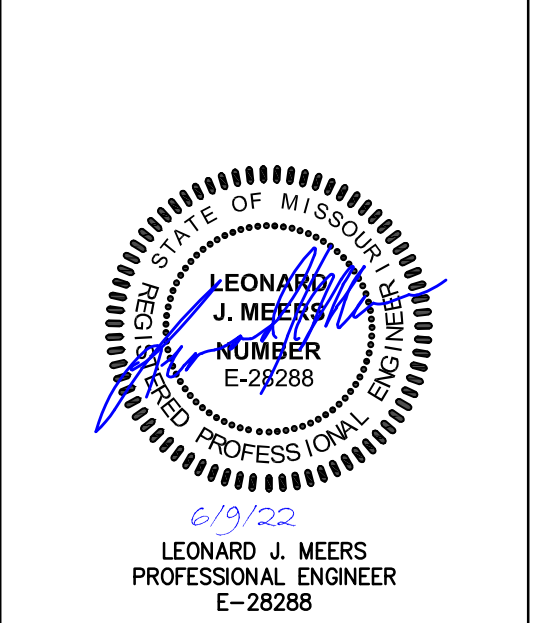
PREPARED FOR:  
**BRINKMANN CONSTRUCTORS**  
CONTACT: JACOB ENGLERT  
16650 CHESTERFIELD GROVE RD, SUITE 100  
CHESTERFIELD, MO 63005  
PH: (636) 537-9700  
E: JEnglert@brinkmannconstructors.com

NO.	DESCRIPTION	DATE
1	CITY COMMENTS	02-24-2022
2	CITY/UTIL COMMENTS	03-14-2022
3		
4		
5		

**PROJECT TITLE**  
O'FALLON  
U-HAUL  
1200 S. OUTER ROAD  
O'FALLON, MO 63366

**GRIMES CONSULTING, INC.**  
Civil Engineering & Surveying Services  
GRIMES CONSULTING, INC.  
PROFESSIONAL ENGINEER CORPORATION, E-170-D  
PROFESSIONAL LAND SURVEYING CORPORATION, LS-343-D  
www.grimesconsulting.com

12300 OLD TESSON ROAD  
SUITE 3000  
ST. LOUIS, MO 63128  
PH: (314) 849-6100  
FAX: (314) 849-6010



**Developer / Owner Information**  
UHAUL  
CONTACT: MICHAEL WHITE  
314-952-6203  
Email: michael\_white@uhaul.com

**PROFILES**

**P+Z No.**  
Approval Date:  
City No.  
**Page No.**  
C9.0