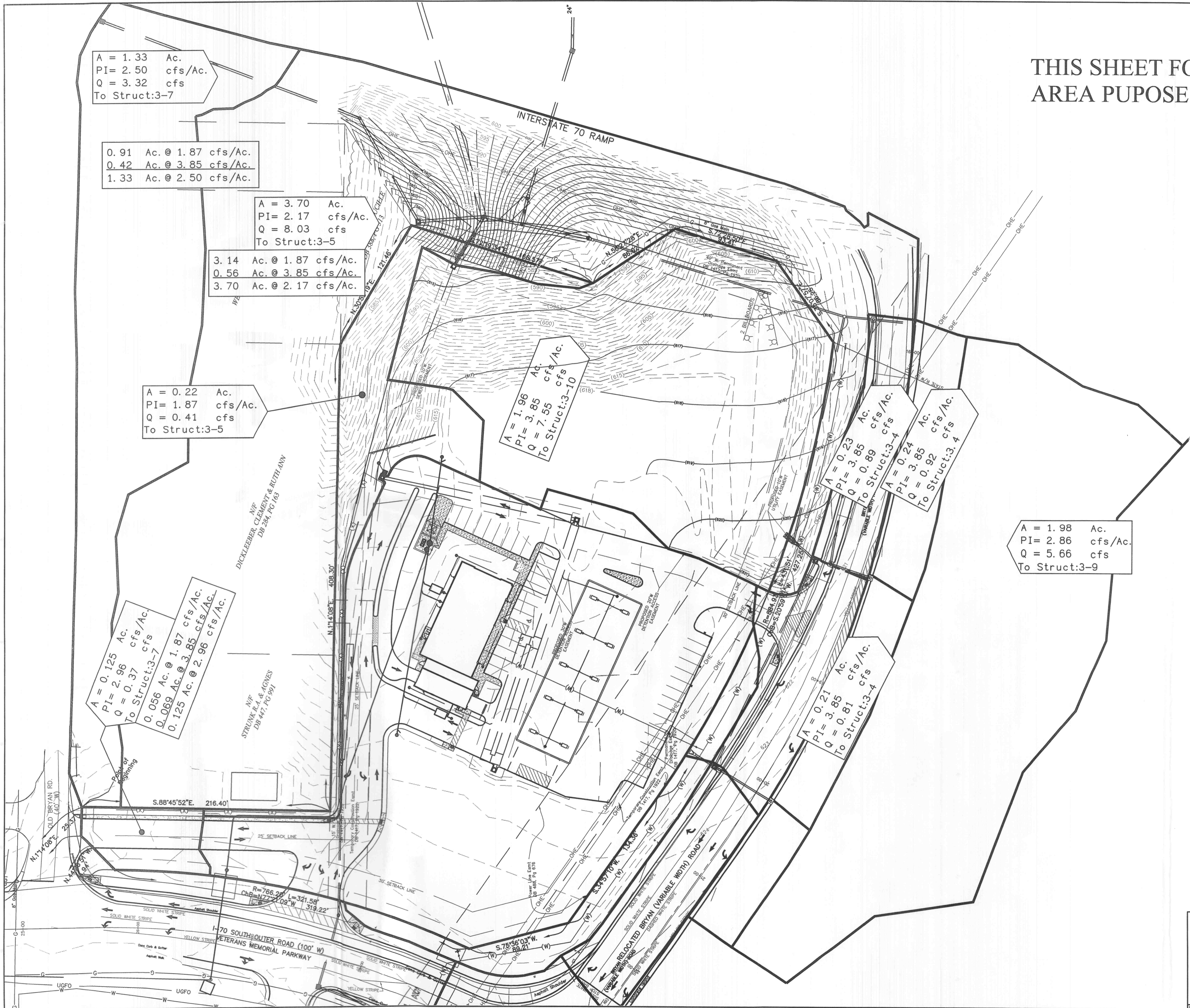
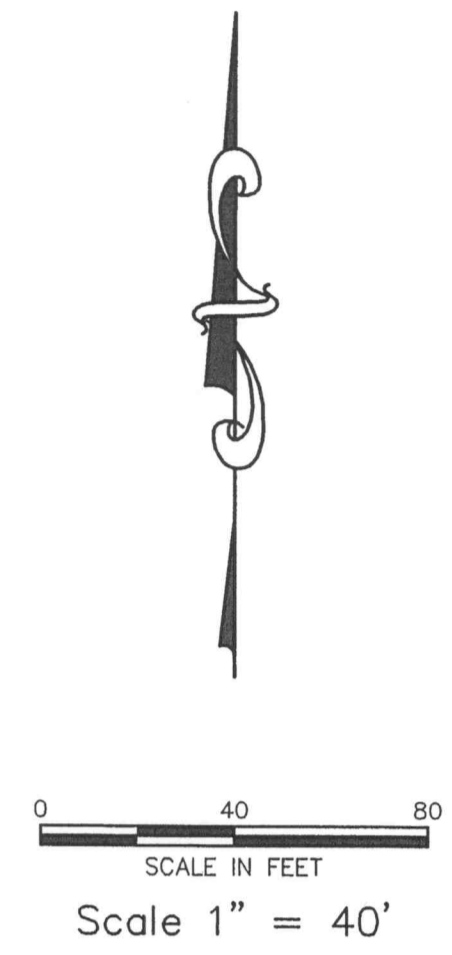


THIS SHEET FOR DRAINAGE
AREA PUPOSES ONLY



A = 1.33 Ac.
PI = 2.50 cfs/Ac.
Q = 3.32 cfs
To Struct:3-7

0.91 Ac. @ 1.87 cfs/Ac.
0.42 Ac. @ 3.85 cfs/Ac.
1.33 Ac. @ 2.50 cfs/Ac.

A = 3.70 Ac.
PI = 2.17 cfs/Ac.
Q = 8.03 cfs
To Struct:3-5

3.14 Ac. @ 1.87 cfs/Ac.
0.56 Ac. @ 3.85 cfs/Ac.
3.70 Ac. @ 2.17 cfs/Ac.

A = 0.22 Ac.
PI = 1.87 cfs/Ac.
Q = 0.41 cfs
To Struct:3-5

A = 1.96 Ac.
PI = 3.85 cfs/Ac.
Q = 7.55 cfs
To Struct:3-10

A = 0.23 Ac.
PI = 3.85 cfs/Ac.
Q = 0.89 cfs
To Struct:3-4

A = 0.24 Ac.
PI = 3.85 cfs/Ac.
Q = 0.92 cfs
To Struct:3.4

A = 1.98 Ac.
PI = 2.86 cfs/Ac.
Q = 5.66 cfs
To Struct:3-9

A = 0.125 Ac.
PI = 2.96 cfs/Ac.
Q = 0.37 cfs
To Struct:3-7
0.056 Ac. @ 1.87 cfs/Ac.
0.069 Ac. @ 3.85 cfs/Ac.
0.125 Ac. @ 2.96 cfs/Ac.

A = 0.21 Ac.
PI = 3.85 cfs/Ac.
Q = 0.81 cfs
To Struct:3-4

Call Before you DIG
TOLL FREE
1-800-344-7483
MISSOURI ONE-CALL SYSTEM INC.
MODOT (314) 340-4100

Underground facilities, structures and utilities have been plotted from available surveys, records and information and, therefore, do not necessarily reflect the actual existence, nonexistence, size, type, number of, location or depth of these facilities, structures and utilities.

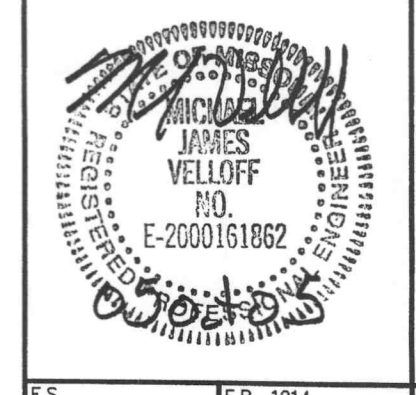
The Contractor shall be responsible for verifying the actual location of all underground facilities, structures and utilities, either shown or not shown on these plans. The underground facilities, structures and utilities shall be located in the field prior to any grading, excavation or construction of improvements. Should the actual location, size or depth of any underground facilities, structures or utilities differ from those indicated on these plans, the Contractor shall immediately notify Clayton Engineering prior to proceeding with the installation of any proposed improvements in the area where the difference exists. These provisions shall in no way absolve any party from complying with the Underground Facility Safety and Damage Prevention Act, Chapter 319, RSMO.

The signed and sealed original of this drawing is on file at the offices of The Clayton Engineering Company, Inc. The signed and sealed original is the official document and shall take precedence over any digital version.

NO.	DATE	BY	REVISIONS
2	10-05-05	SLH	REVISED PER CITY OF O'FALLON COMMENTS
1	08-16-05	SLH	REVISED PER MODOT COMMENTS

DRAINAGE AREA MAP
PHILLIPS 66
879 BRYAN ROAD O'FALLON, MO. 63366
Prepared for:
U-GAS STL, INC.
895 BOLGER CT.
FENTON, MO 63026
314-343-9770

Copyright 2005
Clayton Engineering Co.
All Rights Reserved



the clayton engineering company, inc.
ENGINEERS • SURVEYORS • PLANNERS
11920 WESTLINE INDUSTRIAL DRIVE
ST. LOUIS, MISSOURI 63146
(314) 692-8888 FAX: (314) 692-8888
clayton-engineering.com

Designed	SWQ
Drawn	SLH
Checked	MJV
Date	02-03-05
Project Number	04221
Sheet Number	3 of 6