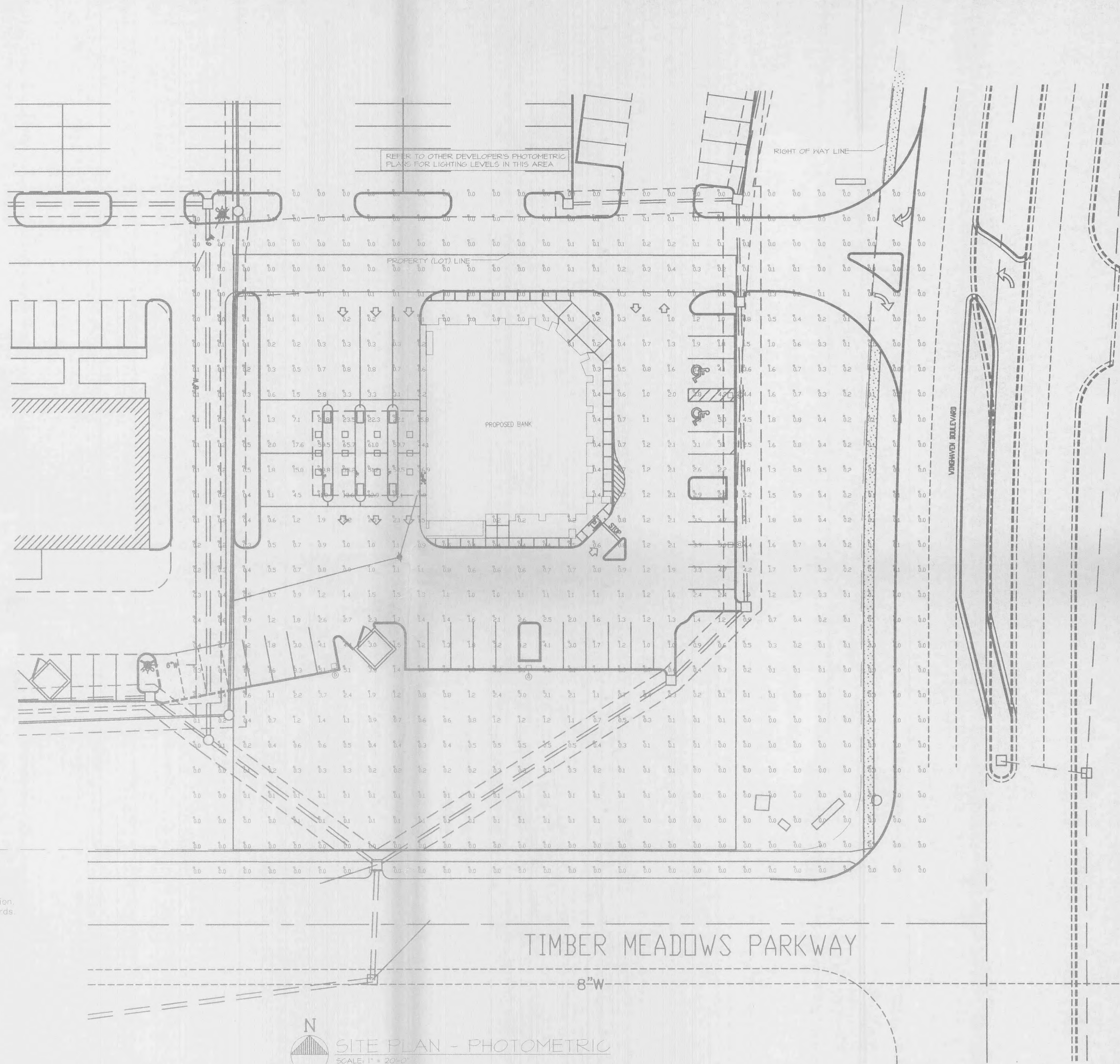


LIGHT STANDARD  
TYP 4 PLS.  
NOT TO SCALE



REFER TO OTHER DEVELOPER'S PHOTOMETRIC PLANS FOR LIGHTING LEVELS IN THIS AREA

PROPOSED BANK

TIMBER MEADOWS PARKWAY

VINGHAVEN BOULEVARD



SITE PLAN - PHOTOMETRIC  
SCALE: 1" = 20'-0"

Lighting values will be reviewed on site prior to final occupancy inspection. Corrections will need to be made if not in compliance with City standards.

| Numeric Summary       |             |       |      |      |     |         |         |
|-----------------------|-------------|-------|------|------|-----|---------|---------|
| Project: All Projects |             |       |      |      |     |         |         |
| Label                 | CalcType    | Units | Avg  | Max  | Min | Avg/Min | Max/Min |
| GRFB                  | Illuminance | Fc    | 0.90 | 65.7 | 0.0 | 0.00    | 0.00    |

| Luminaire Schedule    |     |        |             |        |       |                 |
|-----------------------|-----|--------|-------------|--------|-------|-----------------|
| Project: All Projects |     |        |             |        |       |                 |
| Symbol                | Qty | Label  | Arrangement | Lumens | LLF   | Description     |
| □                     | 12  | B      | SINGLE      | 16000  | 0.720 | MPGF-DS-L73-175 |
| □                     | 4   | A, ALT | SINGLE      | 20800  | 0.720 | MHR-R4-250      |

| LANDSCAPE              |                    | PARKING LOT            |                     |
|------------------------|--------------------|------------------------|---------------------|
| Illuminance Values(Fc) | Average =34.88     | Illuminance Values(Fc) | Average =1.75       |
|                        | Maximum =65.7      |                        | Maximum =5.2        |
|                        | Minimum =9.0       |                        | Minimum =0.3        |
|                        | Avg/Min Ratio=3.99 |                        | Avg/Min Ratio=5.83  |
|                        | Max/Min Ratio=7.30 |                        | Max/Min Ratio=17.33 |

ARCHITECTURE  
INTERIORS  
SPACE PLANNING

**GRUBBS & ASSOCIATES**

415 Onez Parree - Hazelwood, MO 63042 - (314)921-3429 Fax 921-0819

**G&W**  
Engineering Corporation

38 Westholme Access Drive  
St. Louis, MO 63108  
(314) 692-2727  
www.gandwengineering.com Project No. 02-118

**U M B**  
BANKS  
WINGHAVEN CENTRE  
OF FALLON, MISSOURI

04-14-03 0221

6/6 E5.0