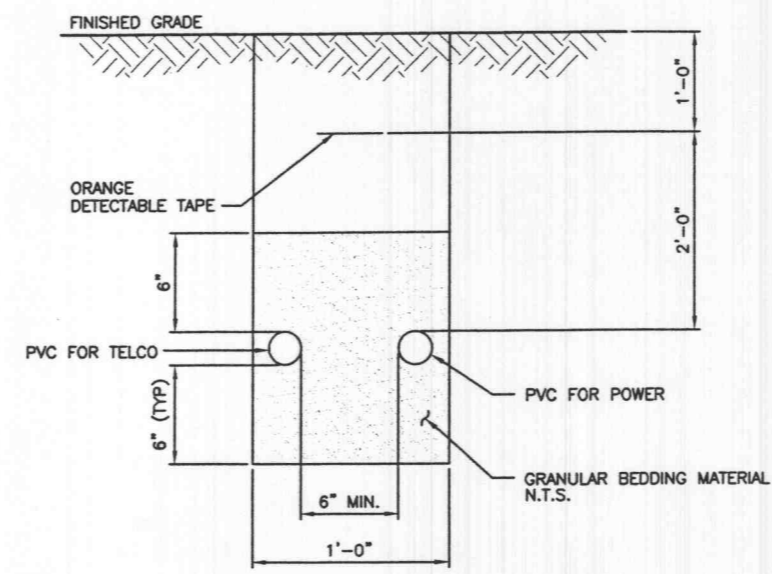


N.T.S.

SLIP JOINT DETAIL

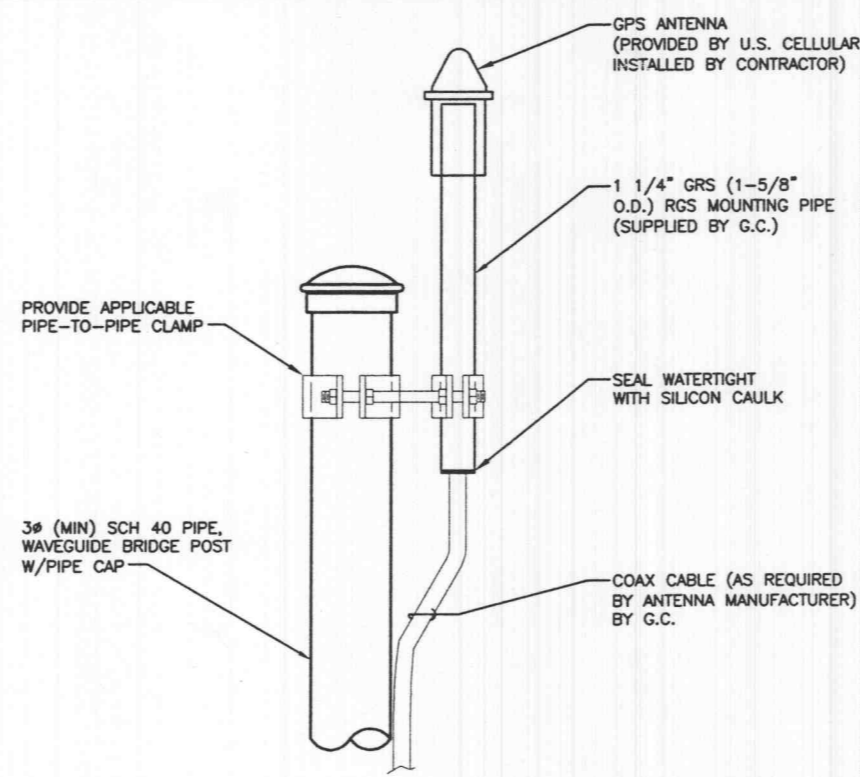
4

NOTES:
1. COMMUNICATION AND POWER CONDUITS MAY BE RUN IN SEPARATE TRENCHES. CONDUITS SHALL MAINTAIN 6 INCHES MINIMUM SEPARATION.
2. SEE UTILITIES PLAN FOR EXACT SIZE AND QUANTITY OF CONDUITS.



TYPICAL CONDUIT TRENCH

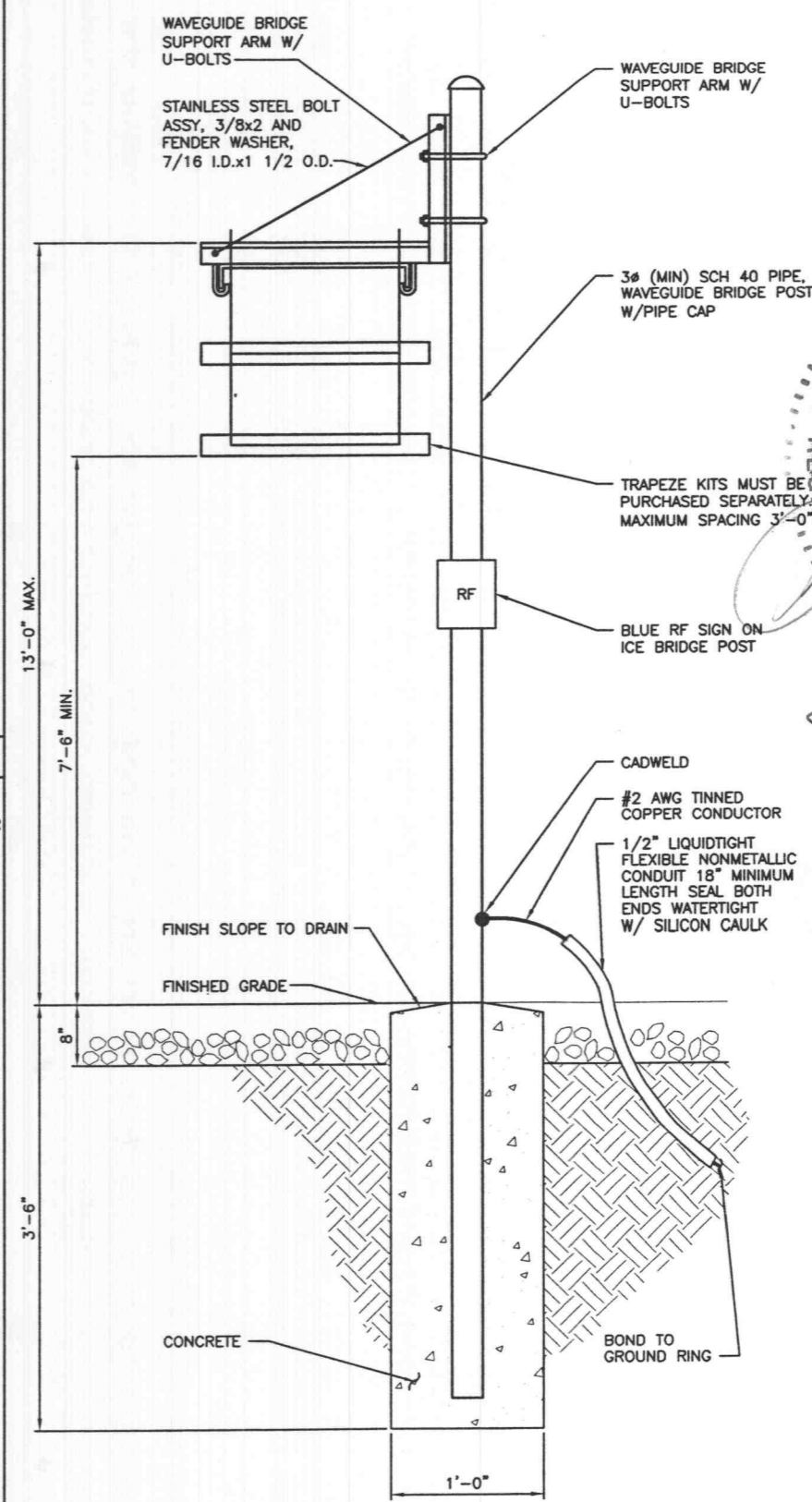
2



ELEVATION

GPS ANTENNA MOUNTING DETAIL

5



FURNISHED AND INSTALLED BY ANTENNA CONTRACTOR

SABRE WAVEGUIDE BRIDGE DETAIL

1



SELECTIVE SITE CONSULTANTS, INC.
A Site Selection, Engineering and Construction Quality Assurance Company
1816 Lackland Hills Parkway, Suite 400
St. Louis, Missouri 63146
Phone: 314-993-1010
Fax: 314-993-1036

CIS COMMUNICATIONS, LLC
165 N. MERAMEC AVE., STE. 400
CLAYTON, MO 63105
OFFICE: 314-721-5405
FAX: 314-727-6503
TOLL FREE: 877-720-8600

NOV 11 2005
REGISTERED PROFESSIONAL ENGINEER
NUMBER E-20702

STATE OF MISSOURI
REGISTERED PROFESSIONAL ENGINEER
BRETON D. KEISLING
NUMBER E-27328

PROJECT NO: 852614.1

DRAWN BY: ANP

CHECKED BY: HAN/RWQ

SUBMITTALS			
A	04/21/05	ISSUED FOR REVIEW	ANP
O	05/03/05	ISSUED FOR CONSTRUCTION	MTG

THE INFORMATION CONTAINED IN THIS SET OF DOCUMENTS IS PROPRIETARY BY NATURE. ANY USE OR DISCLOSURE OTHER THAN THAT WHICH RELATES TO US CELLULAR COMMUNICATIONS INC. IS STRICTLY PROHIBITED.

SITE NAME
**CITY OF O'FALLON
(USCC SITE NAME: ST. PAUL)**

321 FIRMA ROAD
O'FALLON, MISSOURI 63366

SHEET TITLE
DETAILS (1 OF 2)

SHEET NUMBER
A-7