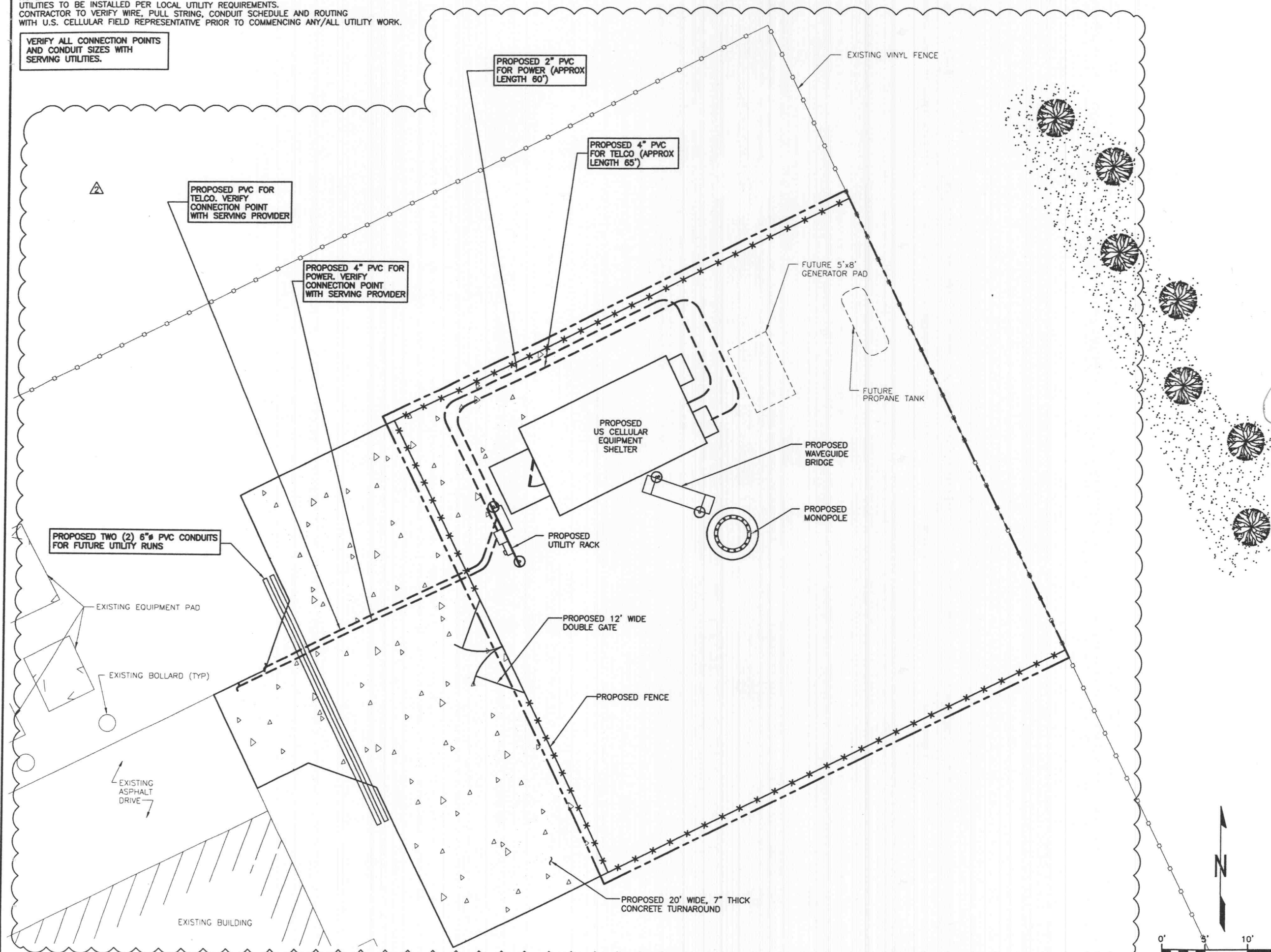


NOTE:
 UTILITIES TO BE INSTALLED PER LOCAL UTILITY REQUIREMENTS.
 CONTRACTOR TO VERIFY WIRE, PULL STRING, CONDUIT SCHEDULE AND ROUTING
 WITH U.S. CELLULAR FIELD REPRESENTATIVE PRIOR TO COMMENCING ANY/ALL UTILITY WORK.

VERIFY ALL CONNECTION POINTS
 AND CONDUIT SIZES WITH
 SERVING UTILITIES.



SELECTIVE SITE CONSULTANTS, INC.
 A Site Assessment, Engineering, and Construction Quality Assurance Company
 1816 Lackland Hills Parkway, Suite 400
 St. Louis, Missouri 63146
 Phone: 314-993-1010
 Fax: 314-993-1036

CIS COMMUNICATIONS, LLC
 165 N. MERAMEC AVE., STE. 400
 CLAYTON, MO 63105
 OFFICE: 314-721-5405
 FAX: 314-727-6503
 TOLL FREE: 877-720-8600

REGISTERED PROFESSIONAL ENGINEER
 NOVIN NUMBER
 E-20702

STATE OF MISSOURI
 REGISTERED PROFESSIONAL ENGINEER
 SHELTON
 D. KEISLING
 NUMBER
 E-27323

PROJECT NO. 852614.1
 DRAWN BY: ANP

CHECKED BY: HAN/RWQ

SUBMITTALS		
A	04/21/05	ISSUED FOR REVIEW ANP
0	05/03/05	ISSUED FOR CONSTRUCTION MTG
1	05/27/05	REVISED PER CLIENT COMMENTS FG
2	06/08/05	REVISED PER CLIENT COMMENT FG

THE INFORMATION CONTAINED IN THIS SET OF DOCUMENTS IS PROPRIETARY BY NATURE. ANY USE OR DISCLOSURE OTHER THAN THAT WHICH RELATES TO US CELLULAR COMMUNICATIONS INC. IS STRICTLY PROHIBITED.

SITE NAME
CITY OF O'FALLON
 (USCC SITE NAME: ST. PAUL)
 321 FIRMA ROAD
 O'FALLON, MISSOURI 63366

SHEET TITLE
ELECTRICAL SITE PLAN

SHEET NUMBER
E-1

ELECTRICAL SITE PLAN