

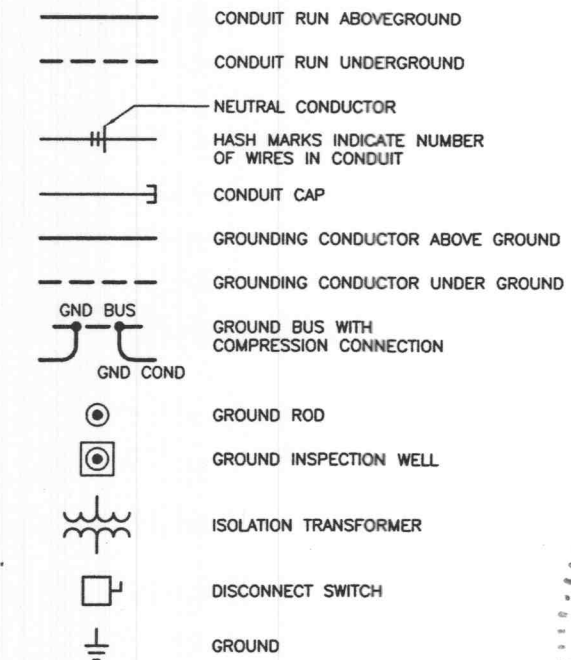
SUBMITTALS		
A	04/21/05	ISSUED FOR REVIEW ANP
0	05/03/05	ISSUED FOR CONSTRUCTION MTG

THE INFORMATION CONTAINED IN THIS SET OF DOCUMENTS IS PROPRIETARY BY NATURE. ANY USE OR DISCLOSURE OTHER THAN THAT WHICH RELATES TO US CELLULAR COMMUNICATIONS INC. IS STRICTLY PROHIBITED.

SITE NAME
CITY OF O'FALLON
 (USCC SITE NAME: ST. PAUL)
 321 FIRMA ROAD
 O'FALLON, MISSOURI 63366

SHEET TITLE
ELECTRICAL DETAILS

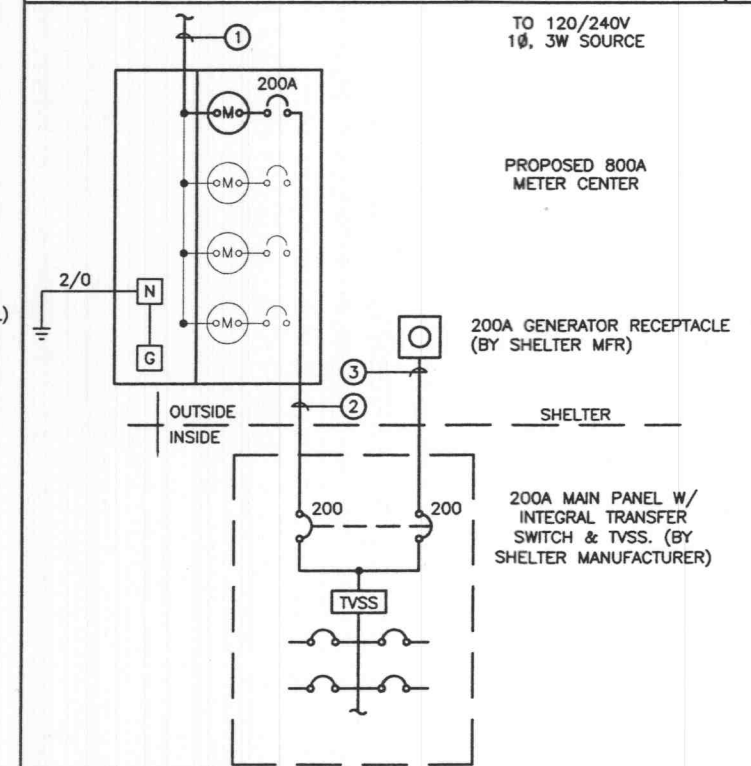
SHEET NUMBER
E-2



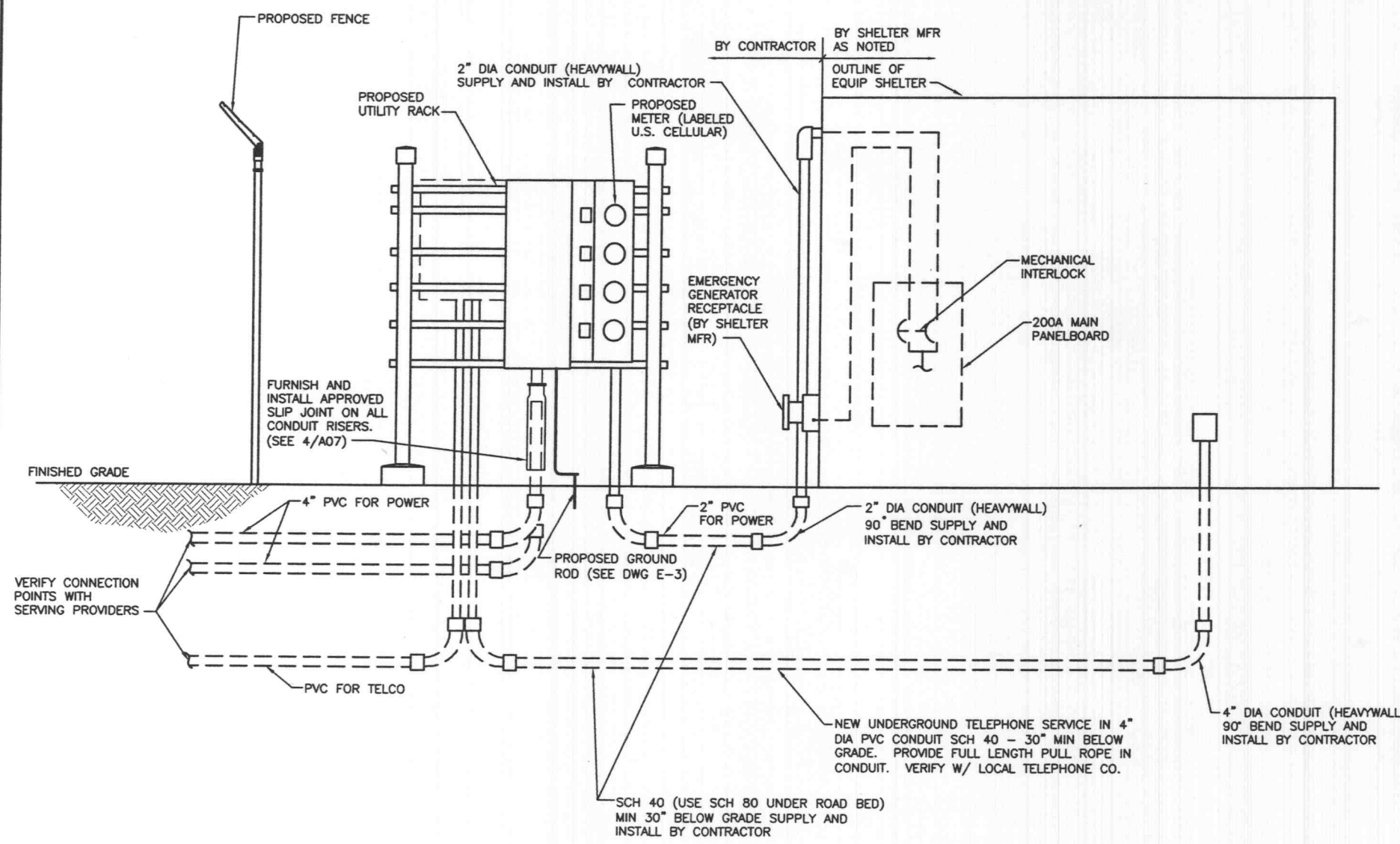
ELECTRICAL SYMBOLS

NO.	FROM	TO	CONFIGURATION
1	SOURCE	METER MODULES	(2) 3 #500KCMIL IN 4" PVC
2	200A METER SUITE A	SHELTER	3#3/0, 1#6G, 2" PVC
3	GENERATOR RECEPTACLE	200A MAIN PANELBOARD	BY SHELTER MANUFACTURER
4	EXISTING TELCO DEMARC	TELCO CABINET ON UTILITY RACK	INCOMING TELCO SERVICE, PVC
5	TELCO CABINET ON UTILITY RACK	TELCO CABINET IN SHELTER	6-PAIR #24 AWG 4" PVC

CIRCUIT SCHEDULE



ONE-LINE DIAGRAM



ELECTRICAL RISER DIAGRAM