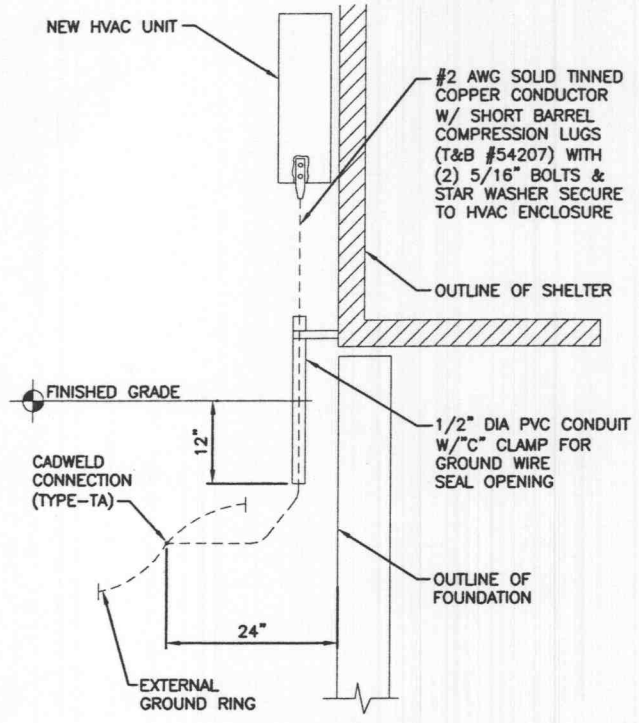


- NOTES:
1. ALL HARDWARE 8-88 STAINLESS STEEL INCLUDING BELLVILLES COAT ALL SURFACE WITH KOPR-SHIELD BEFORE MATING.
 2. FOR GROUND BOND TO STEEL ONLY: INSERT A TOOTH WASHER BETWEEN LUG AND STEEL, COAT ALL SURFACES WITH KOPR-SHIELD.
 3. ALL HOLES ARE COUNTERSUNK 1/16".

TYPICAL GROUND BAR

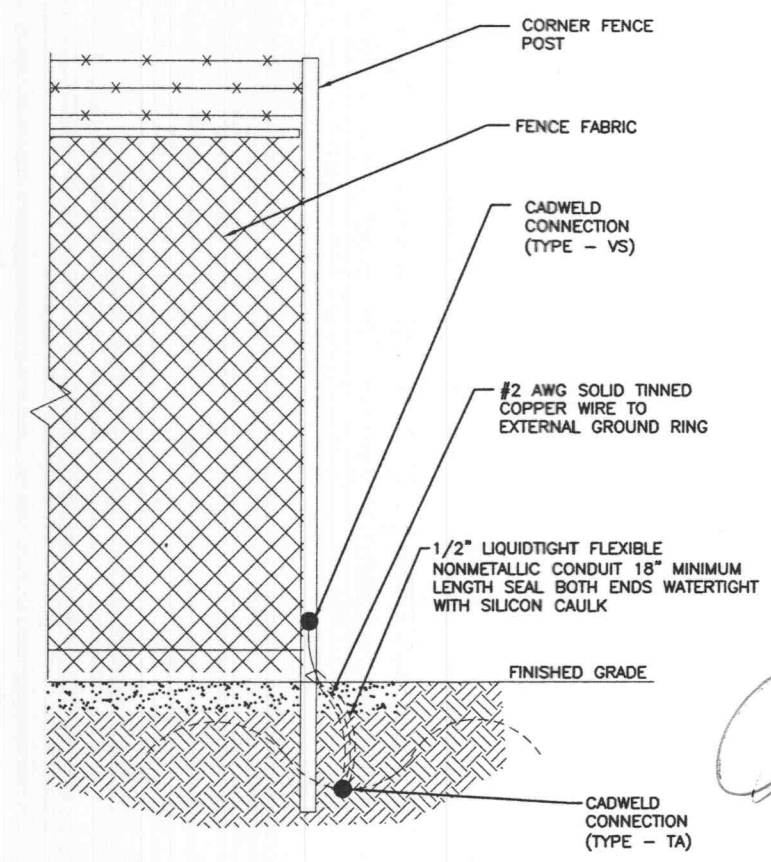
5



HVAC GROUNDING DETAIL

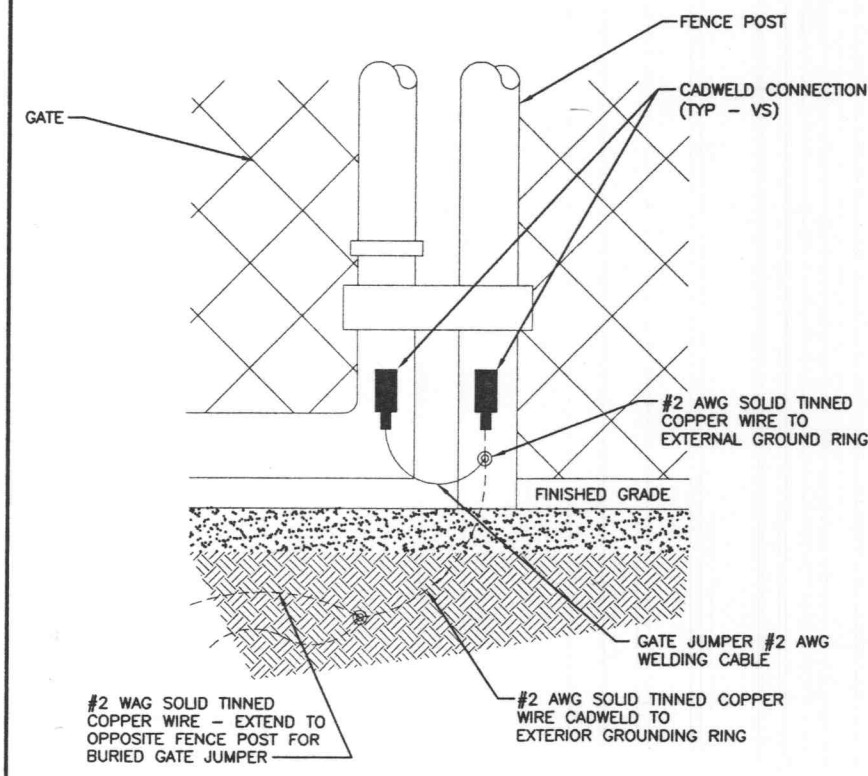
3

NOTE: GROUND WIRE SHALL BE ROUTED AND CADWELDED INSIDE THE FENCED COMPOUND.



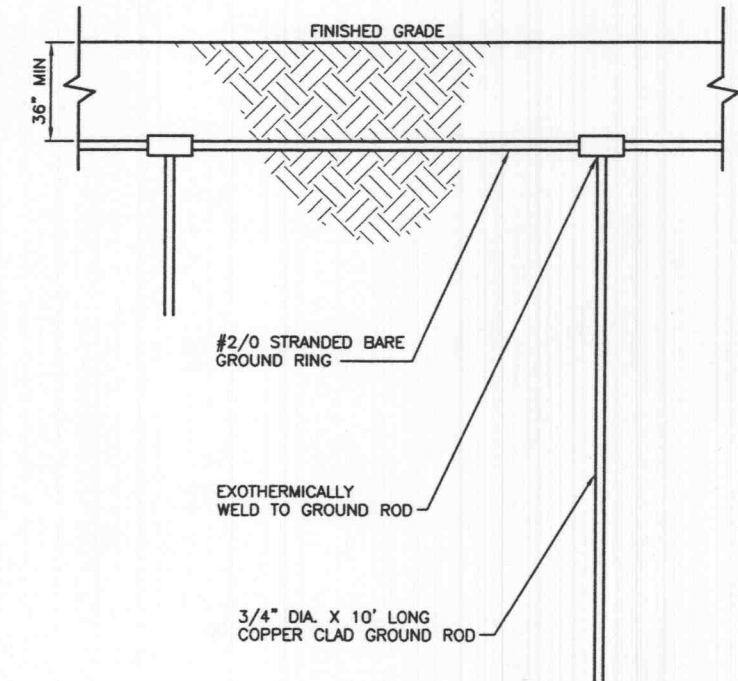
FENCE GROUNDING DETAIL

1



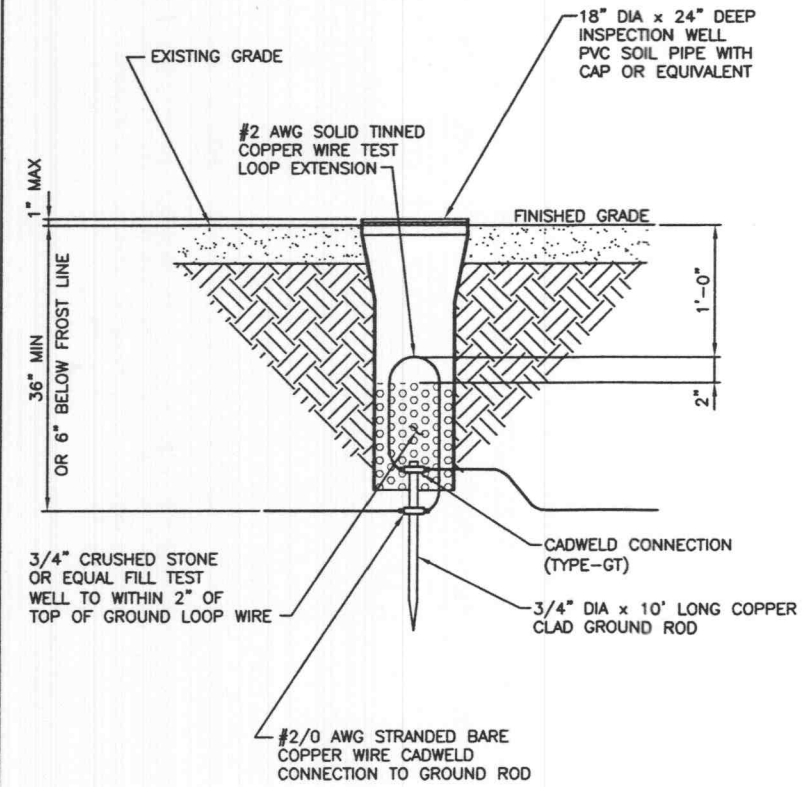
GATE GROUNDING DETAIL

6



EXTERNAL GROUND RING DETAIL

4



INSPECTION WELL

2



SELECTIVE SITE CONSULTANTS, INC.
 1816 Lackland Hills Parkway, Suite 400
 St. Louis, Missouri 63146
 Phone: 314-993-1010
 Fax: 314-993-1036

CIS COMMUNICATIONS, LLC
 165 N. MERAMEC AVE., STE. 400
 CLAYTON, MO 63105
 OFFICE: 314-721-5405
 FAX: 314-727-6503
 TOLL FREE: 877-720-8600



PROJECT NO: 10-27825 852614

DRAWN BY: ANP

CHECKED BY: HAN/RWQ

SUBMITTALS		
A	04/21/05	ISSUED FOR REVIEW ANP
0	05/03/05	ISSUED FOR CONSTRUCTION MTG

THE INFORMATION CONTAINED IN THIS SET OF DOCUMENTS IS PROPRIETARY BY NATURE. ANY USE OR DISCLOSURE OTHER THAN THAT WHICH RELATES TO US CELLULAR COMMUNICATIONS INC. IS STRICTLY PROHIBITED.

SITE NAME
 CITY OF O'FALLON
 (USCC SITE NAME: ST. PAUL)
 321 FIRMA ROAD
 O'FALLON, MISSOURI 63366

SHEET TITLE
 GROUNDING DETAILS (2 OF 2)

SHEET NUMBER
 G-3