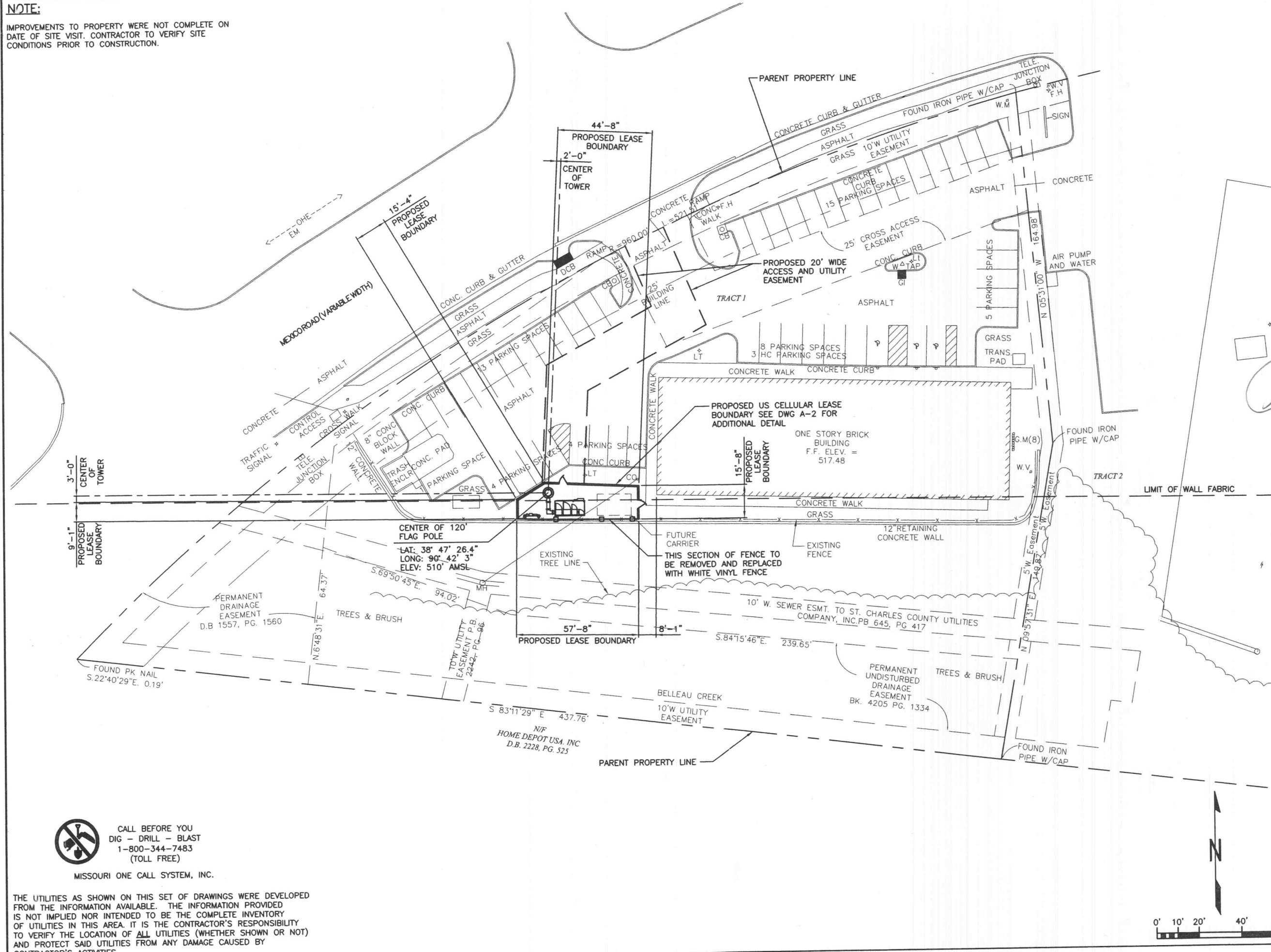


NOTE:

IMPROVEMENTS TO PROPERTY WERE NOT COMPLETE ON DATE OF SITE VISIT. CONTRACTOR TO VERIFY SITE CONDITIONS PRIOR TO CONSTRUCTION.



CALL BEFORE YOU DIG - DRILL - BLAST
1-800-344-7483
(TOLL FREE)

MISSOURI ONE CALL SYSTEM, INC.

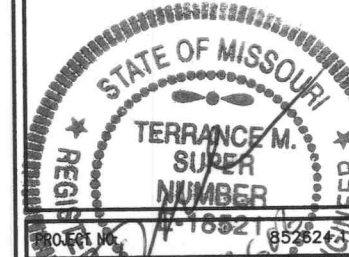
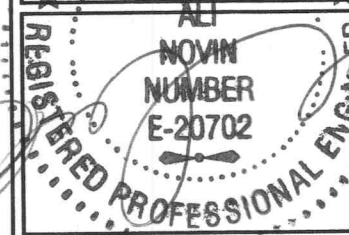
THE UTILITIES AS SHOWN ON THIS SET OF DRAWINGS WERE DEVELOPED FROM THE INFORMATION AVAILABLE. THE INFORMATION PROVIDED IS NOT IMPLIED NOR INTENDED TO BE THE COMPLETE INVENTORY OF UTILITIES IN THIS AREA. IT IS THE CONTRACTOR'S RESPONSIBILITY TO VERIFY THE LOCATION OF ALL UTILITIES (WHETHER SHOWN OR NOT) AND PROTECT SAID UTILITIES FROM ANY DAMAGE CAUSED BY CONTRACTOR'S ACTIVITIES.

OVERALL SITE PLAN



SELECTIVE SITE CONSULTANTS, INC.
A Site Assessment, Engineering, and Construction Quality Assurance Company
1816 Lackland Hills Parkway, Suite 400
St. Louis, Missouri 63146
Phone: 314-993-1010
Fax: 314-993-1036

CIS COMMUNICATIONS, LLC
165 N MERAMEC AVE, STE. 400
CLAYTON, MO 63105
OFFICE: 314-721-5405
FAX: 314-727-6503
TOLL FREE: 800-20-8600



PROJECT NO. 16521
DRAWN BY: [Signature]
CHECKED BY: [Signature]

SUBMITTALS		
A	05/23/06	ISSUED FOR REVIEW ANP
0	05/25/06	ISSUED FOR CONSTRUCTION ANP

THE INFORMATION CONTAINED IN THIS SET OF DOCUMENTS IS PROPRIETARY BY NATURE. ANY USE OR DISCLOSURE OTHER THAN THAT WHICH RELATES TO US CELLULAR COMMUNICATIONS INC. IS STRICTLY PROHIBITED.

SITE NAME
MEXICO AND HIGHWAY K
8621-8635 MEXICO ROAD
O'FALLON, MISSOURI 63304

SHEET TITLE
OVERALL SITE PLAN

SHEET NUMBER
A-1