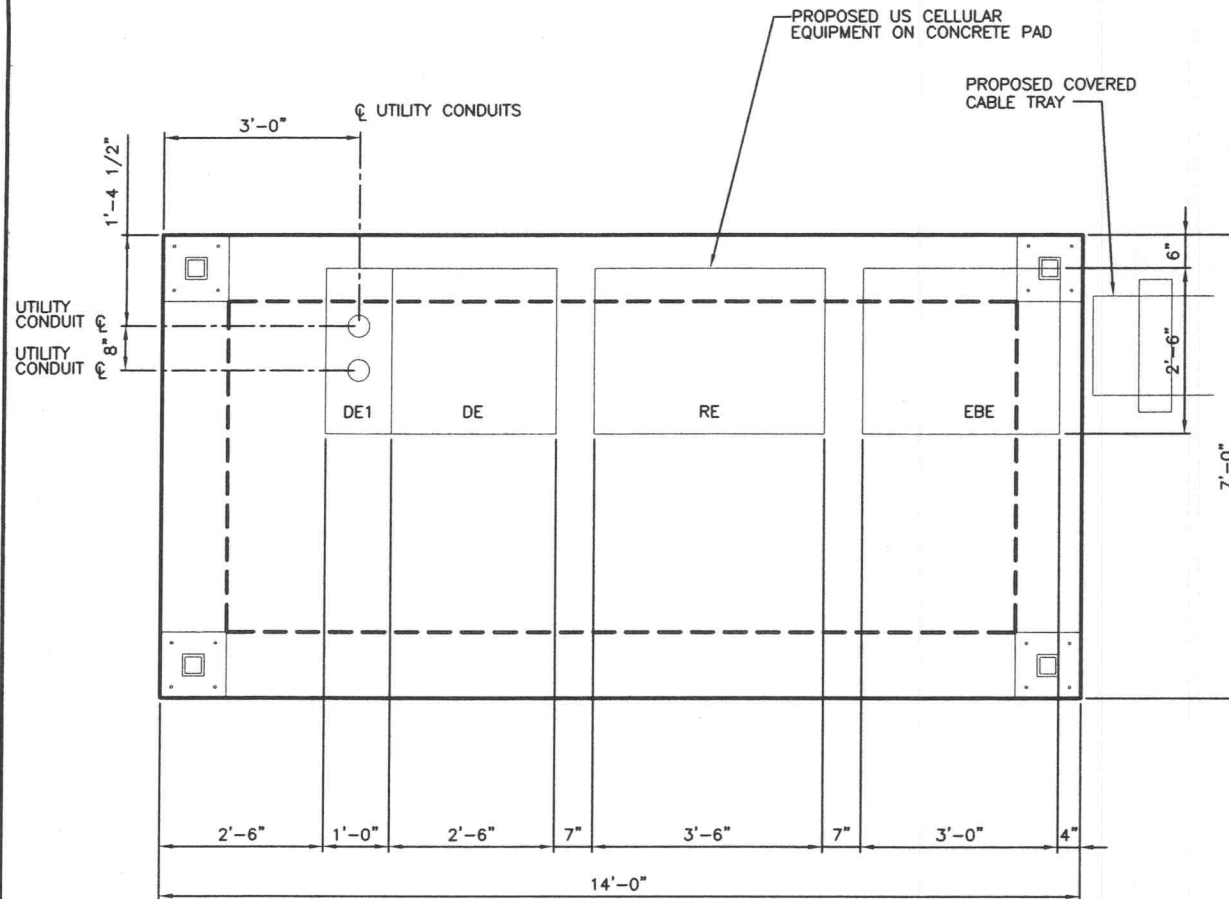
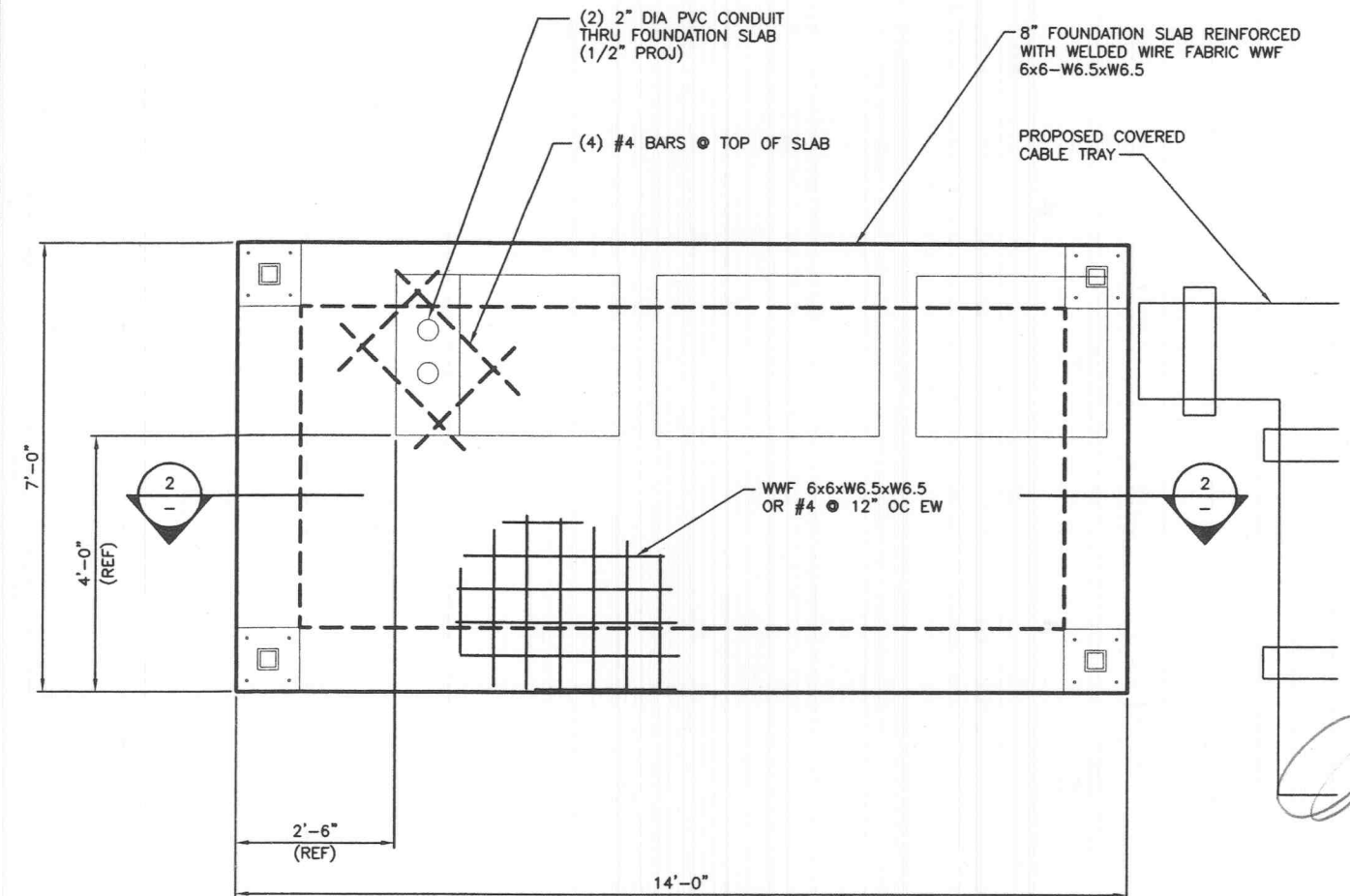


NOTE:
SEE SHEET A-7 FOR CANOPY PLAN



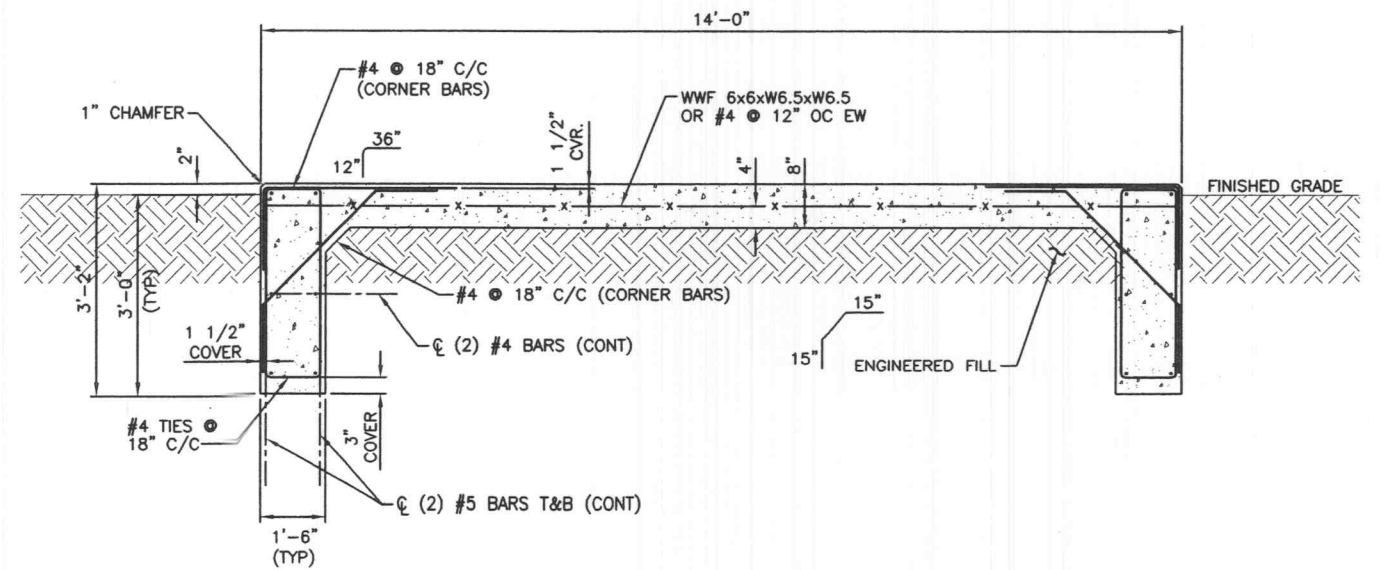
EQUIPMENT LOCATION PLAN

3



EQUIPMENT FOUNDATION PLAN

1



EQUIPMENT FOUNDATION SECTION

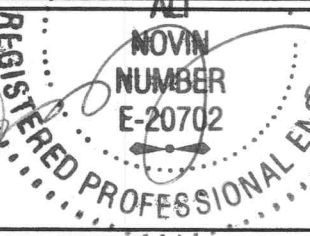
4

2



SELECTIVE SITE CONSULTANTS, INC.
1816 Lackland Hills Parkway, Suite 400
St. Louis, Missouri 63144
Phone: 314-993-1011
Fax: 314-993-1033

CIS COMMUNICATIONS, LLC
165 N MERAMEC AVE., STE. 400
DAYTON, MO 63105
OFFICE: 314-721-5405
FAX: 314-721-6503
TOLL-FREE: 1-877-220-8600



CHECKED BY: HAN

SUBMITTALS		
A	05/23/06	ISSUED FOR REVIEW
0	05/25/06	ISSUED FOR CONSTRUCTION

THE INFORMATION CONTAINED IN THIS SET OF DOCUMENTS IS PROPRIETARY BY NATURE. ANY USE OR DISCLOSURE OTHER THAN THAT WHICH RELATES TO US CELLULAR COMMUNICATIONS INC. IS STRICTLY PROHIBITED.

SITE NAME
MEXICO AND HIGHWAY K
8621-8635 MEXICO ROAD
O'FALLON, MISSOURI 63304

SHEET TITLE
FOUNDATION PLAN AND DETAILS

SHEET NUMBER
A-4