

1. THE CONTRACTOR SHALL GIVE ALL NOTICES AND COMPLY WITH ALL LAWS, ORDINANCES, RULES, REGULATIONS AND LAWFUL ORDERS OF ANY PUBLIC AUTHORITY, MUNICIPAL AND UTILITY COMPANY SPECIFICATIONS, AND LOCAL AND STATE JURISDICTIONAL CODES BEARING ON THE PERFORMANCE OF THE WORK. THE WORK PERFORMED ON THE PROJECT AND THE MATERIALS INSTALLED SHALL BE IN STRICT ACCORDANCE WITH ALL APPLICABLE CODES, REGULATIONS, AND ORDINANCES.
2. THE ARCHITECT/ENGINEER HAVE MADE EVERY EFFORT TO SET FORTH IN THE CONSTRUCTION AND CONTRACT DOCUMENTS THE COMPLETE SCOPE OF WORK. THE CONTRACTOR BIDDING THE JOB IS NEVERTHELESS CAUTIONED THAT MINOR OMISSIONS OR ERRORS IN THE DRAWINGS AND OR SPECIFICATIONS SHALL NOT EXCUSE SAID CONTRACTOR FROM COMPLETING THE PROJECT AND IMPROVEMENTS IN ACCORDANCE WITH THE INTENT OF THESE DOCUMENTS.
3. THE CONTRACTOR OR BIDDER SHALL BEAR THE RESPONSIBILITY OF NOTIFYING (IN WRITING) THE US CELLULAR REPRESENTATIVE OF ANY CONFLICTS, ERRORS, OR OMISSIONS PRIOR TO THE SUBMISSION OF CONTRACTOR'S PROPOSAL OR PERFORMANCE OF WORK. IN THE EVENT OF DISCREPANCIES THE CONTRACTOR SHALL PRICE THE MORE COSTLY OR EXTENSIVE WORK, UNLESS DIRECTED IN WRITING OTHERWISE.
4. THE SCOPE OF WORK SHALL INCLUDE FURNISHING ALL MATERIALS, EQUIPMENT, LABOR AND ALL OTHER MATERIALS AND LABOR DEEMED NECESSARY TO COMPLETE THE WORK/PROJECT AS DESCRIBED HEREIN.
5. THE CONTRACTOR SHALL VISIT THE JOB SITE PRIOR TO THE SUBMISSION OF BIDS OR PERFORMING WORK TO FAMILIARIZE HIMSELF WITH THE FIELD CONDITIONS AND TO VERIFY THAT THE PROJECT CAN BE CONSTRUCTED IN ACCORDANCE WITH THE CONTRACT DOCUMENTS.
6. THE CONTRACTOR SHALL OBTAIN AUTHORIZATION TO PROCEED WITH CONSTRUCTION PRIOR TO STARTING WORK ON ANY ITEM NOT CLEARLY DEFINED BY THE CONSTRUCTION DRAWINGS / CONTRACT DOCUMENTS.
7. THE CONTRACTOR SHALL INSTALL ALL EQUIPMENT AND MATERIALS ACCORDING TO THE MANUFACTURER'S / VENDOR'S SPECIFICATIONS UNLESS NOTED OTHERWISE OR WHERE LOCAL CODES OR ORDINANCES TAKE PRECEDENCE.
8. THE CONTRACTOR SHALL PROVIDE A FULL SET OF CONSTRUCTION DOCUMENTS AT THE SITE UPDATED WITH THE LATEST REVISIONS AND ADDENDUMS OR CLARIFICATIONS AVAILABLE FOR THE USE BY ALL PERSONNEL INVOLVED WITH THE PROJECT.
9. THE CONTRACTOR SHALL SUPERVISE AND DIRECT THE PROJECT DESCRIBED HEREIN. THE CONTRACTOR SHALL BE SOLELY RESPONSIBLE FOR ALL CONSTRUCTION MEANS, METHODS, TECHNIQUES, SEQUENCES AND PROCEDURES AND FOR COORDINATING ALL PORTIONS OF THE WORK UNDER THE CONTRACT.
10. THE CONTRACTOR SHALL BE RESPONSIBLE FOR OBTAINING ALL PERMITS AND INSPECTIONS WHICH MAY BE REQUIRED FOR THE WORK BY THE ARCHITECT/ENGINEER, THE STATE, COUNTY OR LOCAL GOVERNMENT AUTHORITY.
11. THE CONTRACTOR SHALL MAKE NECESSARY PROVISIONS TO PROTECT EXISTING IMPROVEMENTS, EASEMENTS, PAVING, CURBING, ETC. DURING CONSTRUCTION. UPON COMPLETION OF WORK, THE CONTRACTOR SHALL REPAIR ANY DAMAGE THAT MAY HAVE OCCURRED DUE TO CONSTRUCTION ON OR ABOUT THE PROPERTY.
12. THE CONTRACTOR SHALL KEEP THE GENERAL WORK AREA CLEAN AND HAZARD FREE DURING CONSTRUCTION AND DISPOSE OF ALL DIRT, DEBRIS, RUBBISH AND REMOVE EQUIPMENT NOT SPECIFIED AS REMAINING ON THE PROPERTY. PREMISES SHALL BE LEFT IN CLEAN CONDITION AND FREE FROM PAINT SPOTS, DUST, OR SMUDGES OF ANY NATURE.
13. THE CONTRACTOR SHALL COMPLY WITH ALL PERTINENT SECTIONS OF THE "CONSTRUCTION SAFETY ORDERS" ISSUED BY THE STATE OF IOWA, LATEST EDITION, AND ALL OSHA REQUIREMENTS AS THEY APPLY TO THIS PROJECT.
14. THE CONTRACTOR SHALL NOTIFY THE US CELLULAR REPRESENTATIVE WHERE A CONFLICT OCCURS ON ANY OF THE CONTRACT DOCUMENTS. THE CONTRACTOR IS NOT TO ORDER MATERIAL OR CONSTRUCT ANY PORTION OF THE WORK THAT IS IN CONFLICT UNTIL CONFLICT IS RESOLVED BY THE US CELLULAR REPRESENTATIVE.
15. THE CONTRACTOR SHALL VERIFY ALL DIMENSIONS, ELEVATIONS, PROPERTY LINES, ETC. ON THE JOB.

GENERAL NOTES

5

SPECIFICATIONS AND NOTES:

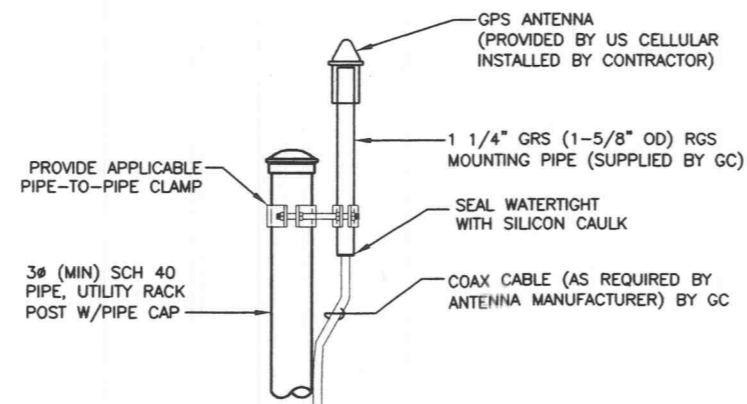
- 1.1 SCOPE / SUBMITTALS
CONCRETE FOR SHELTER FOUNDATION AND FENCE POST SETTING - SUBMIT PROPOSED MODIFICATIONS TO THESE DRAWINGS AND SPECIFICATIONS FOR APPROVAL BY USCC.
- 1.2 QUALITY STANDARDS
COMPLY WITH THE STANDARDS OF THE AMERICAN CONCRETE INSTITUTE, THE CONCRETE REINFORCING STEEL INSTITUTE, AND APPLICABLE ASTM REQUIREMENTS.
- 2.1 FORMWORK MATERIALS
CONCRETE HAS GENERALLY BEEN DESIGNED FOR PLACEMENT AGAINST EARTH OR FILL MATERIALS, HOWEVER, THE TOP 4 FOOT MINIMUM OF SHELTER AND TOWER FOUNDATIONS SHALL BE PLACED USING FORMS. CONSTRUCT FORMWORK TO PROVIDE FINISHED CONCRETE ACCURATE TO LINES AND LEVELS SHOWN ON THE DRAWINGS. CONSTRUCT FORMWORK WITH TIGHT JOINTS TO MINIMIZE LEAKAGE. INCLUDE ALL ACCESSORIES NECESSARY TO SUPPORT EMBEDDED ITEMS DURING PLACEMENT OF CONCRETE.
- 2.2 REINFORCING MATERIALS
REINFORCING BARS SHALL COMPLY WITH ASTM A615, GRADE 60. STEEL WIRE SHALL COMPLY WITH ASTM A82. WELDED WIRE FABRIC SHALL COMPLY WITH ASTM A185. INCLUDE ALL BOLSTERS, CHAIRS, SPACERS AND OTHER DEVICES FOR PROPERLY SECURING THE REINFORCING DURING PLACEMENT OF CONCRETE. ALL REINFORCING MATERIALS SHALL BE CLEANED OF RUST, SCALE AND OTHER MATTER THAT INHIBITS BOND TO CONCRETE.
- 2.3 REINFORCING STEEL
ALL REINFORCING STEEL WILL BE ASTM A615 GRADE 60 BARS, ASTM A185 STEEL MESH. ALL DETAILING, FABRICATION, PLACING AND SUPPORTS SHALL BE IN ACCORDANCE WITH A. C. I. 318 AND C. R. S. I.
- 2.4 ALL CONCRETE SHALL BE MADE FROM TYPE 1 CEMENT AND SHALL HAVE A MINIMUM ULTIMATE COMPRESSION STRENGTH OF 3000 PSI AT THE 28 DAY TEST.
- 3.1 PLACEMENT AND FINISHING
INSTALL FORMWORK AND REINFORCING AS REQUIRED FOR CONFIGURATION OF CONCRETE SHOWN ON THE DRAWINGS. PLACE CONCRETE CONTINUOUSLY IN EACH LOCATION. CONSOLIDATE CONCRETE USING INTERNAL VIBRATION AND IN ACCORDANCE W/ACI 309, LIMITING THE DURATION TO PREVENT BRINGING AN EXCESS OF FINE AGGREGATE TO THE SURFACE. BRING SURFACES TO CORRECT LEVEL WITH STRAIGHT EDGE, FLOAT SMOOTH AND TROWEL TO A HARD, DENSE FINISH HAVING A TOLERANCE OF 1/8" IN 10'-0". EXTERIOR WALKING SURFACES SHALL BE GIVEN A BROOMED FINISH PERPENDICULAR TO DIRECTION OF TRAVEL. HOT AND COLD WEATHER PLACEMENT SHALL BE IN ACCORDANCE WITH THE REQUIREMENTS OF ACI 305 AND 306. COVER CONCRETE WITH 4 MIL. POLY OR SPRAY WITH A CURING COMPOUND NOT CONTAINING WAX, OIL, RESIN AND VARNISH.
- 3.2 TEST CYLINDERS: THREE (3) PER DAY SHALL BE TAKEN, TEST 1 AT 7 DAYS AND 2 AT 28 DAYS.
- 3.3 ADDITIONAL ENGINEERING REVIEW REQUIRED ON SHELTER IF FOUNDATION IS PLACED ON SOIL WITH SOIL BEARING CAPACITY LESS THAN 1200 PSF.
- 3.4 THE SHELTER DELIVERY PEOPLE WILL PROVIDE AND PLACE THE TIE DOWN MATERIAL.

WHEN SETTING THE BUILDING PERIMETER TYPE FOUNDATION ALWAYS CAULK BETWEEN THE BUILDING AND FOUNDATION.

IF A SLAB FOUNDATION IS USED, CAULK ONLY WHEN DIRECTED BY THE P.M.

CONCRETE SPECIFICATIONS

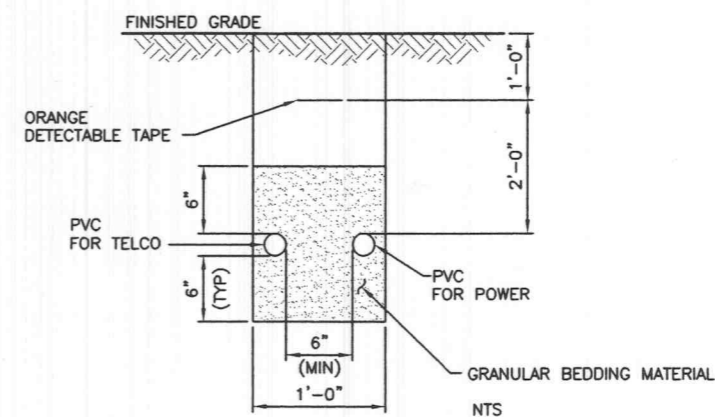
3



ELEVATION

GPS ANTENNA MOUNTING DETAIL

4



NOTES:

1. COMMUNICATION AND POWER CONDUITS MAY BE RUN IN SEPARATE TRENCHES. CONDUITS SHALL MAINTAIN 6 INCHES MINIMUM SEPARATION.
2. SEE UTILITIES PLAN FOR EXACT SIZE AND QUANTITY OF CONDUITS.

TYPICAL CONDUIT TRENCH

2

U.S. Cellular

SELECTIVE SITE CONSULTANTS, INC.
A Site Selection, Engineering and Construction Quality Assurance Company
1816 Lackland Hills Parkway, Suite 400
St. Louis, Missouri 63146
Phone: 314-993-1010
Fax: 314-993-1036

CIS COMMUNICATIONS, LLC
165 N MERAMEC AVE, STE. 400
CLAYTON, MO 63105
OFFICE: 314-721-5405
FAX: 314-727-6503
TOLL FREE: 877-720-8600

ALI
NOWIN
NUMBER
E-20702
REGISTERED PROFESSIONAL ENGINEER

STATE OF MISSOURI
TERRANCE M.
SUPER
NUMBER
E-18521
REGISTERED PROFESSIONAL ENGINEER

CHECKED BY: HAN

SUBMITTALS		
A	05/23/06	ISSUED FOR REVIEW ANP
O	05/25/06	ISSUED FOR CONSTRUCTION ANP

THE INFORMATION CONTAINED IN THIS SET OF DOCUMENTS IS PROPRIETARY BY NATURE. ANY USE OR DISCLOSURE OTHER THAN THAT WHICH RELATES TO US CELLULAR COMMUNICATIONS INC. IS STRICTLY PROHIBITED.

SITE NAME
MEXICO AND HIGHWAY K
8621-8635 MEXICO ROAD
O'FALLON, MISSOURI 63304

SHEET TITLE
DETAILS (1 OF 2)

SHEET NUMBER
A-5