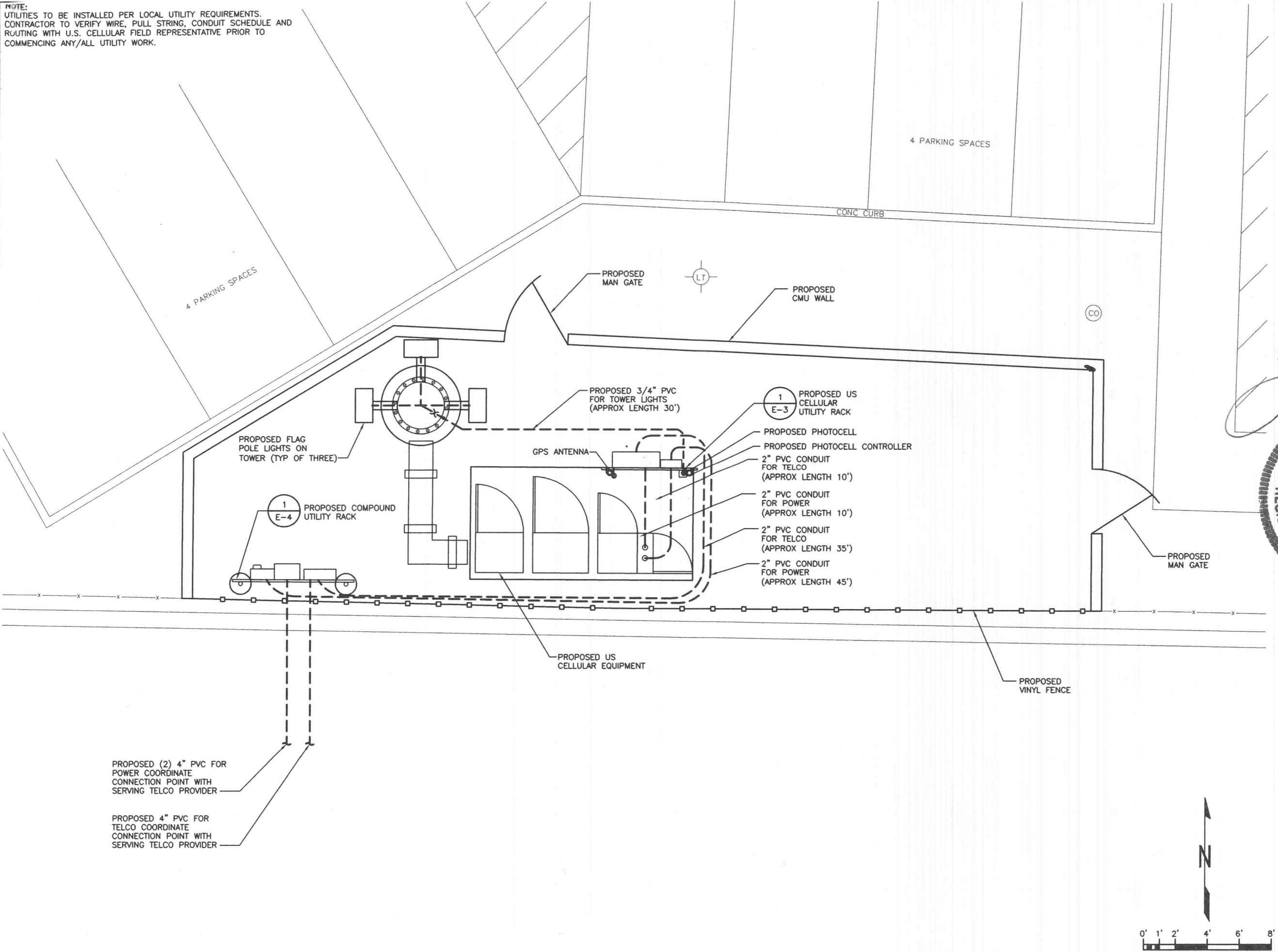


NOTE:
 UTILITIES TO BE INSTALLED PER LOCAL UTILITY REQUIREMENTS.
 CONTRACTOR TO VERIFY WIRE, PULL STRING, CONDUIT SCHEDULE AND
 ROUTING WITH U.S. CELLULAR FIELD REPRESENTATIVE PRIOR TO
 COMMENCING ANY/ALL UTILITY WORK.



SELECTIVE SITE CONSULTANTS, INC.
 A Site Assessment, Engineering and Construction Quality Assurance Company
 1816 Lackland Hills Parkway, Suite 400
 St. Louis, Missouri 63146
 Phone: 314-993-1010
 Fax: 314-993-1036

CIS COMMUNICATIONS, LLC
 165 N MERAMEC AVE, STE. 400
 CLAYTON, MO. 63105
 OFFICE: 314-727-5405
 FAX: 314-727-6500
 TOLL FREE: 877-720-8600
 HOSSEIN

REGISTERED PROFESSIONAL ENGINEER
 ALI NOVIN
 NUMBER
 E-20702

REGISTERED PROFESSIONAL ENGINEER
 TERRANCE M. SUPER
 NUMBER
 E-18521

PROJECT NUMBER: 352624.1
 DRAWN BY: ANP
 CHECKED BY: HAN

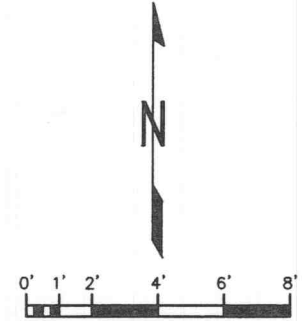
SUBMITTALS		
A	05/23/06	ISSUED FOR REVIEW ANP
D	05/25/06	ISSUED FOR CONSTRUCTION ANP

THE INFORMATION CONTAINED IN THIS SET OF DOCUMENTS IS PROPRIETARY BY NATURE. ANY USE OR DISCLOSURE OTHER THAN THAT WHICH RELATES TO US CELLULAR COMMUNICATIONS INC. IS STRICTLY PROHIBITED.

SITE NAME
 MEXICO AND HIGHWAY K
 8621-8635 MEXICO ROAD
 O'FALLON, MISSOURI 63304

SHEET TITLE
 ELECTRICAL SITE PLAN

SHEET NUMBER
 E-1



ELECTRICAL SITE PLAN