



SELECTIVE SITE CONSULTANTS, INC.
 A Site Acquisition, Engineering, and Construction Quality Assurance Company
 1816 Lackland Hills Parkway, Suite 400
 St. Louis, Missouri 63146
 Phone: 314-993-1010
 Fax: 314-993-1036

CIS COMMUNICATIONS, LLC
 165 N MERAMEC AVE., STE. 400
 CLAYTON, MO, 63105
 OFFICE: 314-721-5405
 FAX: 314-777-6503
 TOLL FREE: 800-420-8600

REGISTERED PROFESSIONAL ENGINEER
 ALL
 NOW IN
 NUMBER
 E-20702

STATE OF MISSOURI
 TERRANCE M. SUPER
 REGISTERED PROFESSIONAL ENGINEER
 PROJECT NO. 8526242
 DRAWN BY: [Signature]
 CHECKED BY: HAN

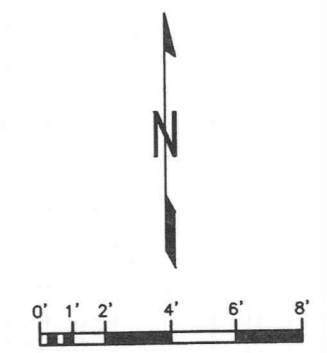
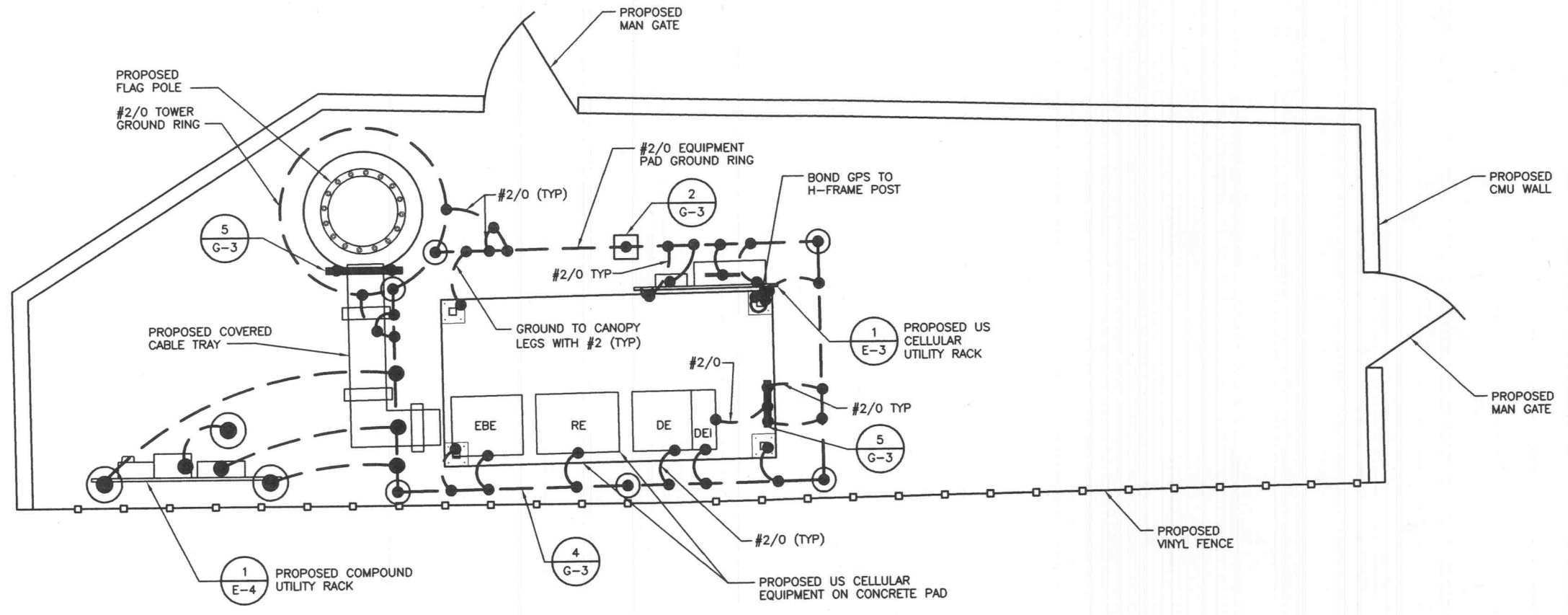
SUBMITTALS		
A	05/23/06	ISSUED FOR REVIEW ANP
0	05/25/06	ISSUED FOR CONSTRUCTION ANP

THE INFORMATION CONTAINED IN THIS SET OF DOCUMENTS IS PROPRIETARY BY NATURE. ANY USE OR DISCLOSURE OTHER THAN THAT WHICH RELATES TO US CELLULAR COMMUNICATIONS INC. IS STRICTLY PROHIBITED.

SITE NAME
 MEXICO AND HIGHWAY K
 8621-8635 MEXICO ROAD
 O'FALLON, MISSOURI 63304

SHEET TITLE
 GROUNDING PLAN

SHEET NUMBER
 G-1



SITE GROUNDING PLAN