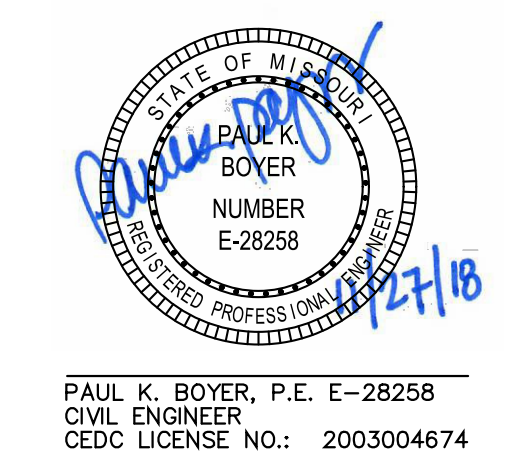
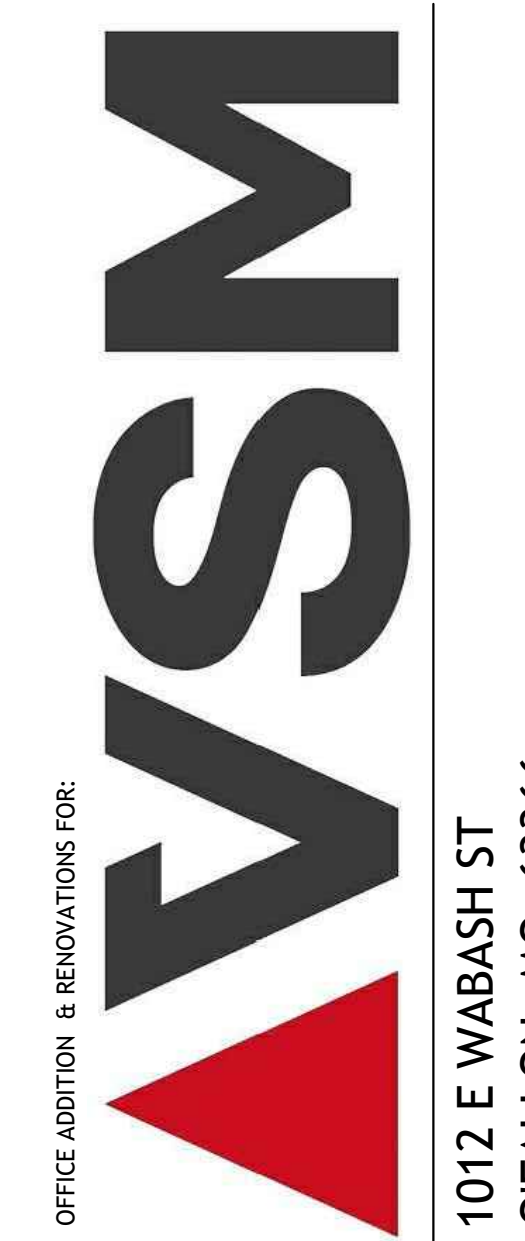


ARCHITECT:
 Mitchell and Hugelback Architects, Inc.
 D.B.A. M+H Architects
 2150 Schuetz Road, Suite 200
 St. Louis, Missouri 63146
 314-878-3500
 www.mha.us.com
 Corporate License No.: 000614

CONSULTANTS:
Civil:
 Civil Engineering Design Consultants, Inc.
 10820 Sunset Office Drive, Suite 200
 St. Louis, MO 63127
 314-729-1400
 Corporate License No.: 2003004674
Structural:
 SSC Engineering, Inc.
 18207 Edison Ave.
 St. Louis, MO 63005
 636-530-7770
 Corporate License No.: 001244
MEP:
 (Design - Build)

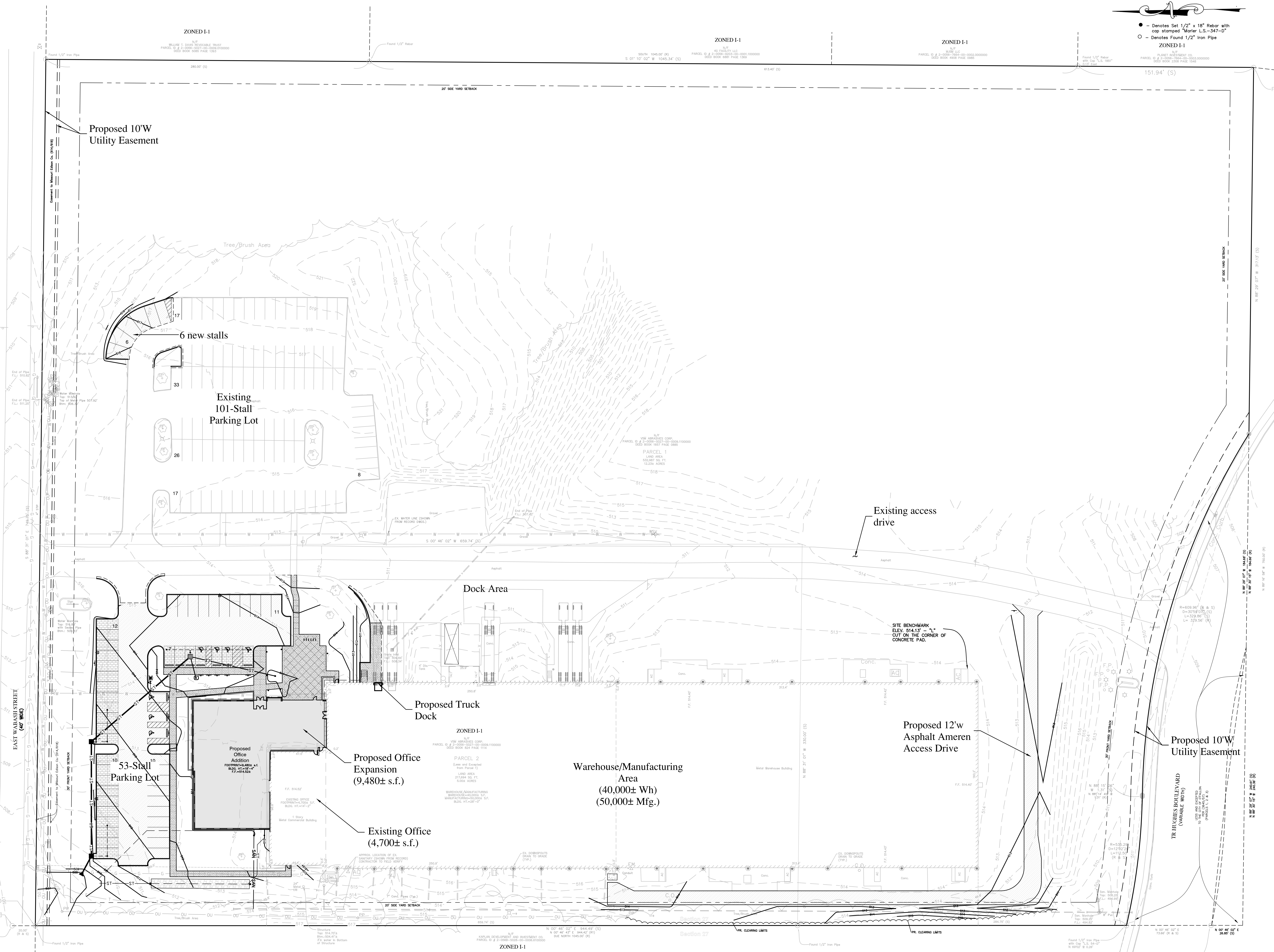


DESCRIPTION:	
PROGRESS SET	8-31-18
PERMIT SET	10-5-18
CITY SUBMITTAL	10-30-18
CITY RESUBMITTAL	11-27-18

Issue Date:	10-5-18
Job Number:	1823
Drawn By:	PKB
Checked By:	PKB
Drawing Title:	

Overall Site Plan

C3



1/32"

KARLAN DEVELOPMENT AND INVESTMENT CO.
 PARCEL ID # 2-008-0000-00-000-000000
 ZONED I-1

SECTION 27

Found 1/2" Iron Pipe
 with Cap "L.S. 54-0"
 N 89° 50' 00" W 26.00' (S)

Found 1/2" Iron Pipe
 with Cap "L.S. 54-0"
 N 89° 50' 00" W 26.00' (S)

Found 1/2" Iron Pipe
 with Cap "L.S. 54-0"
 N 89° 50' 00" W 26.00' (S)

Found 1/2" Iron Pipe
 with Cap "L.S. 54-0"
 N 89° 50' 00" W 26.00' (S)